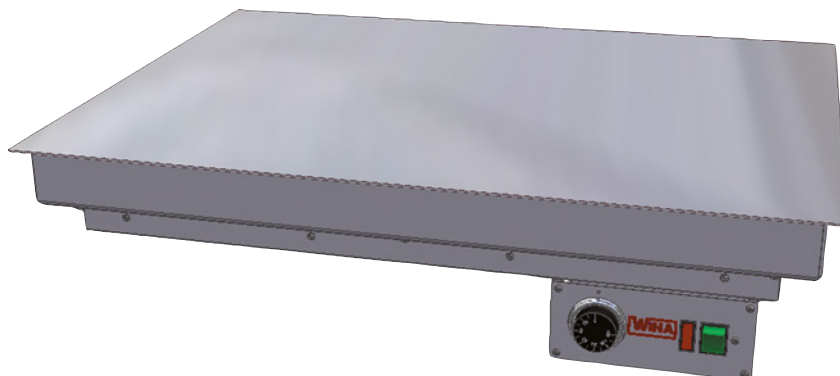


HOTPLATE PROFI – Built-In Devices

Continuously adjustable temperature control



An alternative place to mount the controller is in a counter panel
(Cable length: approx. 120 cm).

Application:

Hotplate to keep pastries, prepared food and hot casseroles warm.

In order to keep the food warm for longer periods, we recommend the use of additional heat radiators.

■ Continuously adjustable temperature control

So easy to tailor to your merchandise.

Temperature range approx. 30°C to max. approx. 110°C

■ Easy installation

The 15 mm rotary mounting lip makes it easy to mount the HOTPLATE in a recess that fits.

■ Easy connection

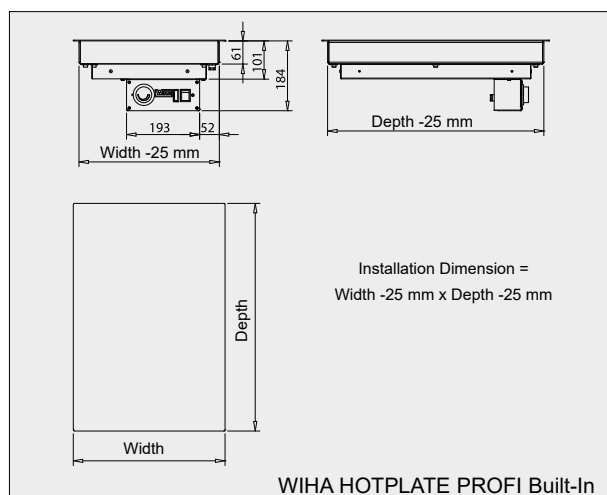
because it is wired so as to be ready for use.

Design

Built-in hotplate to keep pastries, prepared food and hot casseroles warm.

The temperature range is approx. 30°C to approx. 110°C. The top is made of 2 mm thick stainless steel, material 1.4301, with a ground surface. The housing underneath is made of galvanised sheet metal. Continuously adjustable temperature control via a thermostat switch with signal light. The unit is connected via a 1.5 m connecting cable with safety plug.

The controller is mounted in a transport casing beneath the plate. Alternatively, the controller can be mounted in a counter panel (cable length: approx. 120 cm).



13. Hotplates

Built-In Devices



WIHA HOTPLATE PROFI – Built-In Device, Depth 400 mm

Model	Dimensions (Width – Depth – Height)	Art.-No.	Connection
HOTPLATE PROFI 400x400 – built-in	W 400 mm, D 400 mm, H 101 mm	4360	230V/350W
HOTPLATE PROFI 500x400 – built-in	W 500 mm, D 400 mm, H 101 mm	4361	230V/350W
HOTPLATE PROFI 600x400 – built-in	W 600 mm, D 400 mm, H 101 mm	4362	230V/500W
HOTPLATE PROFI 700x400 – built-in	W 700 mm, D 400 mm, H 101 mm	4363	230V/650W
HOTPLATE PROFI 800x400 – built-in	W 800 mm, D 400 mm, H 101 mm	4364	230V/650W
HOTPLATE PROFI 900x400 – built-in	W 900 mm, D 400 mm, H 101 mm	4365	230V/750W
HOTPLATE PROFI 1000x400 – built-in	W 1000 mm, D 400 mm, H 101 mm	4366	230V/750W
HOTPLATE PROFI 1100x400 – built-in	W 1100 mm, D 400 mm, H 101 mm	4367	230V/1000W
HOTPLATE PROFI 1200x400 – built-in	W 1200 mm, D 400 mm, H 101 mm	4368	230V/1000W
HOTPLATE PROFI 1300x400 – built-in	W 1300 mm, D 400 mm, H 101 mm	4369	230V/1250W
HOTPLATE PROFI 1400x400 – built-in	W 1400 mm, D 400 mm, H 101 mm	4370	230V/1250W
HOTPLATE PROFI 1500x400 – built-in	W 1500 mm, D 400 mm, H 101 mm	4371	230V/1250W

Heating-up period approx. 45 minutes.

WIHA HOTPLATE PROFI – Built-In Device, Depth 600 mm

Model	Dimensions (Width – Depth – Height)	Art.-No.	Connection
HOTPLATE PROFI 400x600 – built-in	W 400 mm, D 600 mm, H 101 mm	4180	230V/500W
HOTPLATE PROFI 500x600 – built-in	W 500 mm, D 600 mm, H 101 mm	4321	230V/650W
HOTPLATE PROFI 600x600 – built-in	W 600 mm, D 600 mm, H 101 mm	4182	230V/650W
HOTPLATE PROFI 700x600 – built-in	W 700 mm, D 600 mm, H 101 mm	4323	230V/750W
HOTPLATE PROFI 800x600 – built-in	W 800 mm, D 600 mm, H 101 mm	4183	230V/750W
HOTPLATE PROFI 900x600 – built-in	W 900 mm, D 600 mm, H 101 mm	4325	230V/1000W
HOTPLATE PROFI 1000x600 – built-in	W 1000 mm, D 600 mm, H 101 mm	4184	230V/1000W
HOTPLATE PROFI 1100x600 – built-in	W 1100 mm, D 600 mm, H 101 mm	4189	230V/1000W
HOTPLATE PROFI 1200x600 – built-in	W 1200 mm, D 600 mm, H 101 mm	4185	230V/1250W
HOTPLATE PROFI 1300x600 – built-in	W 1300 mm, D 600 mm, H 101 mm	4329	230V/1250W
HOTPLATE PROFI 1400x600 – built-in	W 1400 mm, D 600 mm, H 101 mm	4330	230V/1500W
HOTPLATE PROFI 1500x600 – built-in	W 1500 mm, D 600 mm, H 101 mm	4331	230V/1500W
HOTPLATE PROFI 1600x600 – built-in	W 1600 mm, D 600 mm, H 101 mm	4332	230V/2000W

Heating-up period approx. 45 minutes.

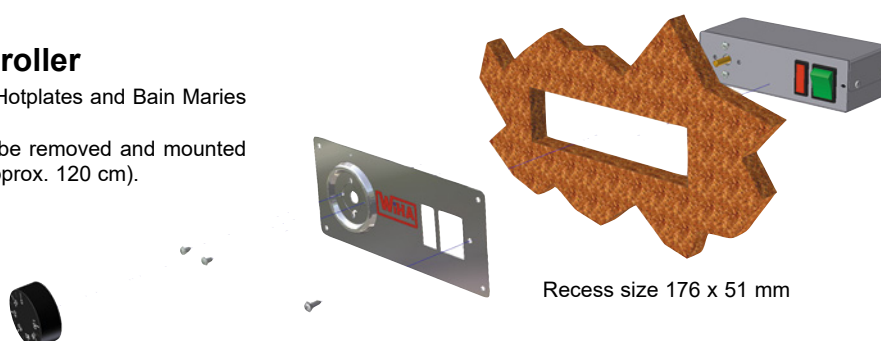
13

Hotplates

The WIHA Built-In Controller

We secure the built-in controllers of Hotplates and Bain Maries in a shipping brace under the unit.

Alternatively, the controller can also be removed and mounted in the counter panel (cable length: approx. 120 cm).



Recess size 176 x 51 mm