

## Tiered Refrigeration Module SKE 180

Ideal for cheese

**WiHA**  
**Freshness System**  
(Special Accessory)  
Patented

**WiHA** +  
**MOVE-DOWN**  
+ gas pressure springs

**WiHA**  
**MOVE-AWAY**  
Patented



**NEW!** With WIHA CLOUD CONTROL, optionally available, more infos on page 432.

**WiHA**  
**LONG-LIFE**  
Longer operating life of the cooling unit

**WiHA**  
**CLOUD**

**WiHA**  
**SPLIT-CONTROL**  
(Special Accessory)  
Flat and removable control panel

**WiHA**  
**ROUND-BOTTOM**  
Easy cleaning of the pan bottom

**2**  
Tiered Installation

**Preferred application:**  
Cheese and other merchandise with a height of up to 18 cm max.

**Optimal climate for cheese and other higher merchandise**

- The air cooler can be easily folded down (MOVE-DOWN-PLUS), in case of R134a/R513A with additional gas pressure springs
- Longer operating life of the cooling unit (LONG-LIFE)
- Hygienic base with round shaped corners (ROUND-BOTTOM)
- 4°C cooling technology
- 2 air speeds
- Liftable evaporator
- With WIHA CLOUD CONTROL: smart control and monitoring via the WIHA app



The surface has a fine surface finish.

SKE 180	For external cooling unit	With cooling unit and controller	Cooling power [-10°ET]	Connection cooling unit	
Model	Art.-No.	Art.-No.			
SKE 180 - 400 *	5959	20580	370 W	230V/210W	■
SKE 180 - 600	5943	20581	370 W	230V/270W	■■
SKE 180 - 800	5944	20582	450 W	230V/350W	■■■
SKE 180 - 1200	5945	20583	605 W	230V/390W	■■■■
SKE 180 - 1600	5946	20584	825 W	230V/540W	■■■■■
SKE 180 - 1600 D (2 air coolers)	5998	20587	825W	230V/540W	■■■■■
SKE 180 - 2000 D (2 air coolers)	5947	20586 **	1060 W	230V/750W	■■■■■

The refrigeration units for external cooling units include an expansion valve for R134a/R513A and built-in temperature sensors. The patented WIHA FRESHNESS SYSTEM, WIHA CLOUD CONTROL, protective machine cover and condensate pan/drain trap are available as accessories.  
\* Not available with FRESHNESS SYSTEM. \*\* Without base element, the cooling unit is connected via refrigerant couplings.

### Special Accessories

Condensate pan mounted under the cooling unit	<b>Art.-No.</b> <b>33196</b>
Drain fitting 1 1/4" for connecting to the customer's drain	<b>3815</b>
TMP 620 controller for external cooling unit	<b>12201</b>
TMP 630-CLOUD controller with 2 freely usable outputs, for external cooling unit	<b>33572</b>
TMP 630 controller instead of TMP 620 with 2 freely usable outputs	<b>12210</b>
TMP 630-CLOUD controller instead of TMP 620 with 2 freely usable outputs	<b>33568</b>
Detachable control panel (SPLIT-CONTROL)	<b>12219</b>
extra charge for device with cooling unit in the base housing	<b>33194</b>
Protective machine cover type 370-825	<b>33195</b>
Protective machine cover type 825 (2 air coolers)	<b>33195</b>

<b>Air cooler for operation with refrigerant CO<sub>2</sub></b>	<b>10197</b>
(price per air cooler, see page 404)	
Quick-connect cleaning head (on-site drain is necessary)	<b>6322</b>
Bottom beam single, foldable	<b>5982</b>
Display shelf IMPLUSE with 2 bottom beams	
Width 400 mm	<b>5980</b>
Width 600 mm	<b>5981</b>
With the display shelf IMPLUSE, a product presentation is possible that is horizontal or inclined towards the customer.	
<b>Patented WIHA FRESHNESS SYSTEM</b> see page 45.	

Side wall heightening for SKE	<b>6403</b>
(The side walls are designed in same height as the height of the customer side.)	

Base element UTB 51 optionally available, see table on page 406.

<b>Art.-No.</b> <b>6407</b>
<b>DUO-Bridge SKE 180</b>
To connect two adjacent mounted SKE air chiller units.



<b>Art.-No.</b>
<b>Tiered module with mirror-like surface</b>
Width 400 mm, heights 12/50 mm
Width 600 mm, heights 12/50 mm
<b>6398</b>
<b>6429</b>

### Description

Chiller unit with circulating air for cooling cheese and other higher merchandise with a height of up to 18 cm max. The air baffle (with ground surface) located behind the merchandise has slits for mounting bottom beams for a merchandise shelf that can be set at an angle. To operate it, the customer should provide a glass top that should only be open on the air blow-off side. Temperature: < 5°C at 25°C/60% relative humidity (climate class 3 according to DIN EN ISO 23953). Commercial product for the installation in stationary food and service counter.

For design details of the model, see page 46.

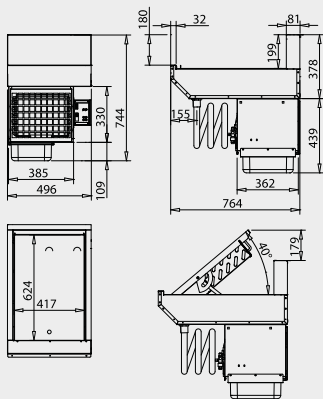
## 2. Air Chiller Units

tiered installation



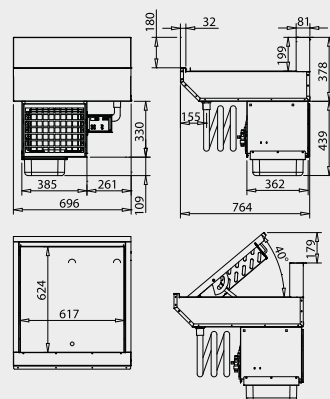
2

Tiered  
Installation



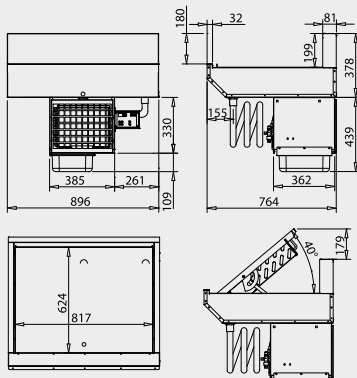
Art.-No. 20580

WIHA SKE 180 - 400



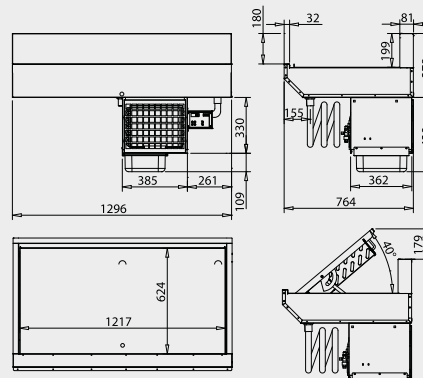
Art.-No. 20581

WIHA SKE 180 - 600



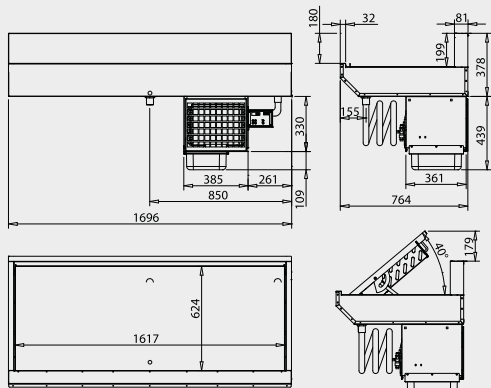
Art.-No. 20582

WIHA SKE 180 - 800



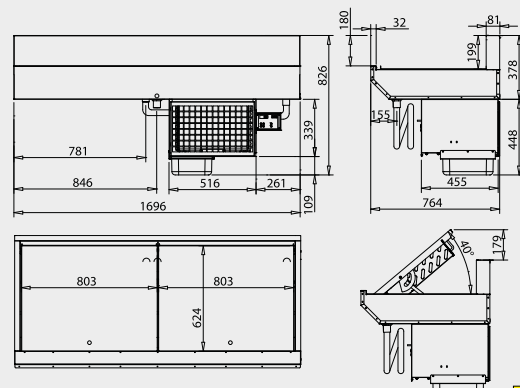
Art.-No. 20583

WIHA SKE 180 - 1200



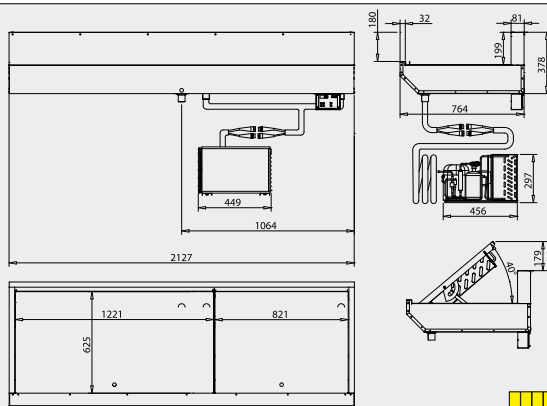
Art.-No. 20584

WIHA SKE 180 - 1600



Art.-No. 20587

WIHA SKE 180 - 1600 D



Art.-Nr. 20586

WIHA SKE 180 - 2000 D



The drawings are shown with special accessory that is not included; more drawings are available on [www.wiha-web.com](http://www.wiha-web.com) under "Info Centre / Customer Area".