

11. Under Counter Refrigerators

Accessories KUB 710



Under Counter Module – 710 mm High

Made entirely of stainless steel

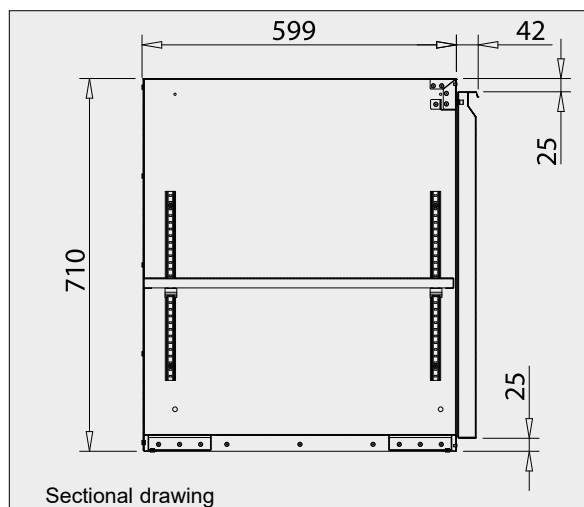
Also available with black front.

Integrated handle bar (stainless steel)



The under counter refrigerators of the series "KUB 710" can be combined with the unrefrigerated under counter modules listed here. If required both the under counter refrigerators and the under counter modules can be equipped with round feet (adjustable height approx. 100–140 mm).

If the lateral sides are visible, they must be closed with an on-site decorative plate or with an end plate made of stainless steel (available as accessory).



Sectional drawing

Special Accessories

	<u>Art.-No.</u>
End plate, stainless steel height 710 mm, depth 600 mm, thickness 20 mm	14220
4 round feet, adjustable height approx. 100–140 mm	9128
Base retaining bracket for round feet, 1 piece	9152

Open Module with Intermediate Shelf, Height=710 mm

	<u>Art.-No.</u>
Width 400 mm	14100
Width 450 mm	14101
Width 500 mm	14102
Width 600 mm	14103
Width 800 mm	14104
Width 1000 mm	14105

Special widths, see page 325.



Design

Body is made entirely of stainless steel, material 1.4016. The exterior surface of the front side is ground. The intermediate shelf is height adjustable. Load capacity of the shelves is up to 50 kg. The upper support edges of the body are equipped with holes to screw on worktops.

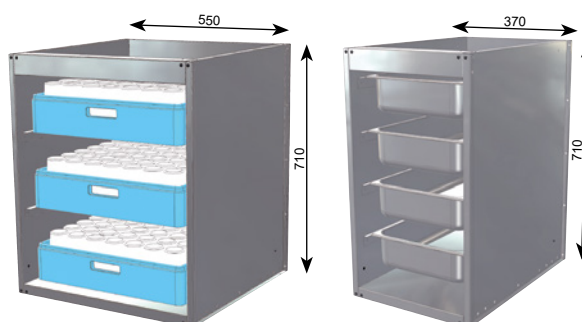
Open Module with Rails for Dish Racks or GN Containers, Height=710 mm

	<u>Art.-No.</u>
Width 550 mm, for 3 dish racks	14110
Width 370 mm, for 4 GN containers	14111

Design

Body is made entirely of stainless steel, material 1.4016. The exterior surface of the front side is ground. The side walls are fitted out with bearing rails for dish racks or GN containers.

The upper support edges of the body are equipped with holes to screw on worktops.



The dish racks and the cups are not included in delivery.

The GN containers are not included in delivery.

Module with Wing Door and Intermediate Shelf, Height=710 mm

	<u>Art.-No.</u>	<u>Art.-No.</u>
Width 400 mm, wing door, hinged left	14120	14140
Width 400 mm, wing door, hinged right	14121	14141
Width 450 mm, wing door, hinged left	14122	14142
Width 450 mm, wing door, hinged right	14123	14143
Width 500 mm, wing door, hinged left	14124	14144
Width 500 mm, wing door, hinged right	14125	14145
Width 600 mm, wing door, hinged left	14126	14146
Width 600 mm, wing door, hinged right	14127	14147
Width 800 mm, with 2 wing doors	14130	14150
Width 1000 mm, with 2 wing doors	14131	14151
Width 1200 mm, with 2 wing doors	14132	14152

Lockable



Design

Body and wing door are made entirely of stainless steel, material 1.4016. The exterior surface of the front side is ground. The intermediate shelf is height adjustable. Load capacity of the shelves is up to 50 kg. The upper support edges of the body are equipped with holes to screw on worktops. The wing door panel contains an integrated handle bar.

Special widths, see page 325.

Module with Wing Door and Rails for Dish Racks, Height=710 mm

	<u>Art.-No.</u>
Width 550 mm, for 3 dish racks, wing door, hinged left	14160
Width 550 mm, for 3 dish racks, wing door, hinged right	14161

Design

Body and wing door are made entirely of stainless steel, material 1.4016. The exterior surface of the front side is ground. The side walls are fitted out with bearing rails for dish racks. The upper support edges of the body are equipped with holes to screw on worktops. The wing door panel contains an integrated handle bar.

Module with Roller Drawers, Height=710 mm

Indication of the usable heights (UH) from top to bottom.

	<u>Art.-No.</u>
Width 400 mm, 2 roller drawers, UH=150/400	14170
Width 400 mm, 3 roller drawers, UH=150/170/170	14171

Special widths, see page 325.

Design

Body and drawers are made entirely of stainless steel, material 1.4016. The exterior surface of the front side is ground. The upper support edges of the body are equipped with holes to screw on worktops. The drawers are fitted out with sturdy stainless-steel rollers (load capacity 50 kg). The drawer panels contain integrated handle bars.



Waste Dumper/Roller Drawer, Height=710 mm

	<u>Art.-No.</u>
Width 400 mm, waste dumper at the bottom, roller drawer at the top (usable height = 150)	14175

Waste Drawer/Roller Drawer, Height=710 mm

	<u>Art.-No.</u>
Width 400 mm, waste drawer at the bottom, roller drawer at the top (usable height = 150)	14180

Design

Body, drawers and waste dumper are made entirely of stainless steel, material 1.4016. The exterior surface of the front side is ground. The upper support edges of the body are equipped with holes to screw on worktops. The drawer is fitted out with sturdy stainless-steel rollers (load capacity 50 kg). The waste dumper and the waste drawer are in a closed casing box and can be removed for emptying and cleaning. The drawer panels contain integrated handle bars made of stainless steel.



11. Under Counter Refrigerators

Accessories KUB 710



Large-Capacity Waste Dumper, Height=710 mm

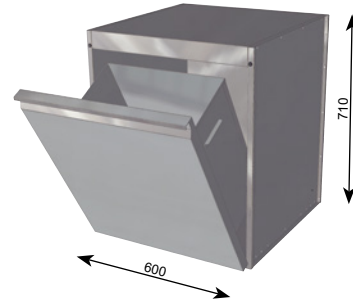
Width 600 mm, waste dumper

Art.-No.
14185

Design

Body and waste dumper are made entirely of stainless steel, material 1.4016. The exterior surface of the front side is ground. The upper support edges of the body are equipped with holes to screw on worktops.

The waste dumper can be removed for cleaning.



Large-Capacity Coffee Ground Container, Height=710 mm

Width 400 mm,
combination: wing door compartment with waste container at the bottom,
coffee grounds dumper with knocking rod at the top
(removable coffee grounds slide).

*Ideal for coffee shops
with high sales*



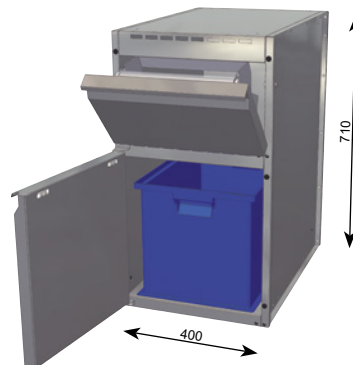
Wing door, hinged left
Wing door, hinged right

Art.-No.
14186
14187

Design

The upper compartment can be swung open and is equipped with a sturdy stainless steel knocking rod with plastic coating. The knocked off coffee grounds falls down via a slide into the large-capacity container located in the lower compartment.

Body, wing door and dumper are made entirely of stainless steel, material 1.4016. The exterior surface of the front side is ground. The upper support edges of the body are equipped with holes to screw on worktops. The panels contain integrated handle bars.



11
Under Counter
Refrigerators

Under Counter Modules for Sinks, Height=710 mm

Height of the upper cover panel approx. 310 mm

Usable height of the wing door compartment approx. 320 mm

Width 400 mm, wing door hinged left (DIN)
Width 400 mm, wing door hinged right (DIN)

Art.-No.
14190
14191

Width 500 mm, wing door hinged left (DIN)
Width 500 mm, wing door hinged right (DIN)

14192
14193

Special widths, see page 326.



Design

Body and wing door are made entirely of stainless steel, material 1.4016. The exterior surface of the front side is ground.

The module is equipped with a cover panel in the upper area and a wing door in the lower part. On the rear side with cut-outs for the installation of water and waste water pipes.

The upper support edges of the body are equipped with holes to screw on worktops. The wing door panel contains an integrated handle bar.

Module with Upper Cover Panel, Wing Door and Intermediate Shelf, Height=710 mm

Height of the upper cover panel: approx. 140 mm

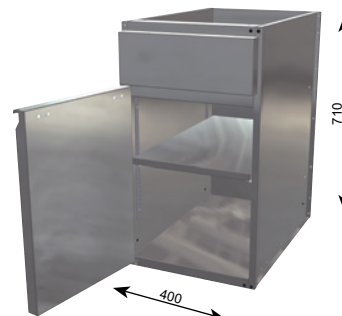
Usable height of the wing door compartment: approx. 470 mm

	<u>Art.-No.</u>
Width 400 mm, wing door hinge left	14210
Width 400 mm, wing door hinge right	14211

Special widths, see page 326.

Design

Body and wing door are made entirely of stainless steel, material 1.4016. The exterior surface of the front side is ground. On the rear side located in the upper area behind the cover panel, the module is equipped with a cut-out for the running of cables. The intermediate shelf is height adjustable. Load capacity of the shelves is up to 50 kg. The upper support edges of the body are equipped with holes to screw on worktops. The wing door panel contains an integrated handle bar.



Module with Upper Cover Panel and Drawers, Height=710 mm

Height of the upper cover panel: approx. 140 mm

	<u>Art.-No.</u>
Width 400 mm, 1 roller drawer, usable height=450 mm	14215

Width 400 mm, 2 roller drawers, usable height=190/210 mm	14216
--	-------

Special widths, see page 326.

Design

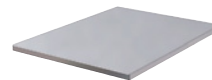
Body and drawers are made entirely of stainless steel, material 1.4016. The exterior surface of the front side is ground. On the rear side located in the upper area behind the cover panel, the module is equipped with a cut-out for the running of cables. The upper support edges of the body are equipped with holes to screw on worktops. The drawers are fitted out with sturdy stainless-steel rollers (load capacity 50 kg). The drawer panels contain integrated handle bars.



Extra Intermediate Shelf

for standard widths:

	<u>Art.-No.</u>
Body width 400 mm	13510-011
Body width 450 mm	13512-011
Body width 500 mm	13530-011
Body width 600 mm	13504-011
Body width 800 mm	13606-011
Body width 1000 mm	13608-011

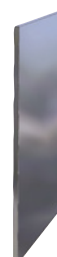


Load capacity of the shelves is up to 50 kg.

End Plate for Under Counter Modules for Sinks and Under Counter Modules, Height=710 mm

If the side areas of the under counter modules are visible, an end plate is necessary. The end plate is made of stainless steel, material 1.4016 with ground surface. It is lined with wood-based material, so that the end plate can be mounted easily with wood screws from the inside of the under counter module.

Dimensions: height 710 mm, depth 600 mm, thickness 20 mm



	<u>Art.-No.</u>
End plate, height=710 mm	14220

11. Under Counter Refrigerators

Accessories KUB 710

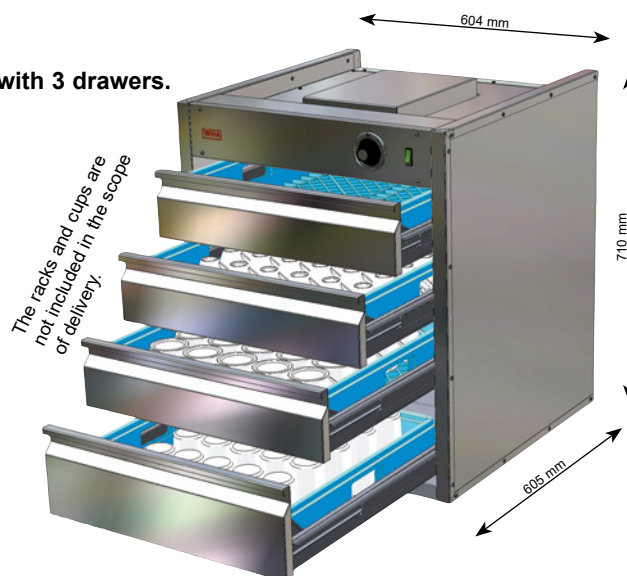


Module – Cup Warmer

Height 710 mm



Also available with 3 drawers.



The Well-Organised Cup Warmer

Just remove the rack from the dishwasher and transfer it with cups still on it to the cup warmer.

Tedious cup restacking is a thing of the past.

Design

The circulating air hot cupboard is manufactured as a built-in module, so that it can be integrated into counter installations and wall units. The special circulating air heating with high performance and robust circulating fan ensures a constant and fast heat distribution. Double-leaf design with internal insulation. The inner and outer surfaces are made of stainless steel, material 1.4031. The three or four drawers are fitted out with stainless-steel telescopic base units (load capacity 25 kg). The racks (500 mm x 500 mm) from the dishwasher can be placed directly into the bottomless drawers.

Dimensions:	width 605 mm, depth 605 mm, height 710 mm
Usable height of drawers:	Art.-No. 2382: 3 x 110 mm, 1 x 160 mm Art.-No. 2391: 3 x 165 mm
Electrical connection:	230V/50Hz/1300W
Temperature range:	approx. 30°C to 80°C

Reliable technology for the commercial operation

- Even heat distribution by circulating air heating
- Great heat output (1200 W)
- Stainless-steel telescopic pull-outs
- Service friendly
- For dishwasher racks 500 mm x 500 mm

Special Accessories

Perforated shelf for a use without dishwasher racks
(The usable height of the drawer is reduced by approx. 15 mm.)

Stainless steel feet
(height: 100 mm to approx. 140 mm)

Art.-No.
13719

9128

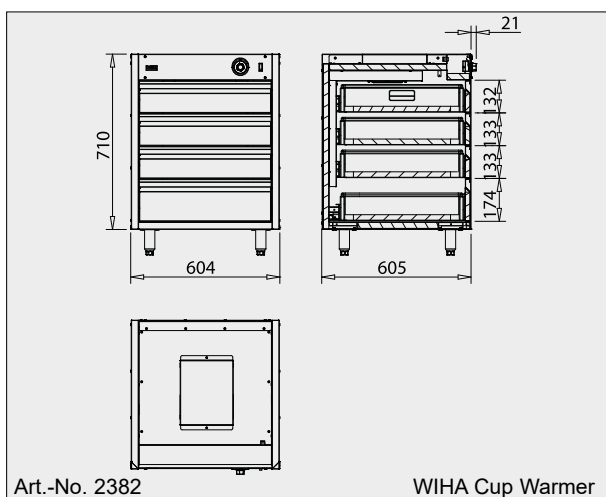
11
Under Counter
Refrigerators

3 Drawers for dishwasher racks
500 mm x 500 mm

Art.-No.
2391

4 Drawers for dishwasher racks
500 mm x 500 mm

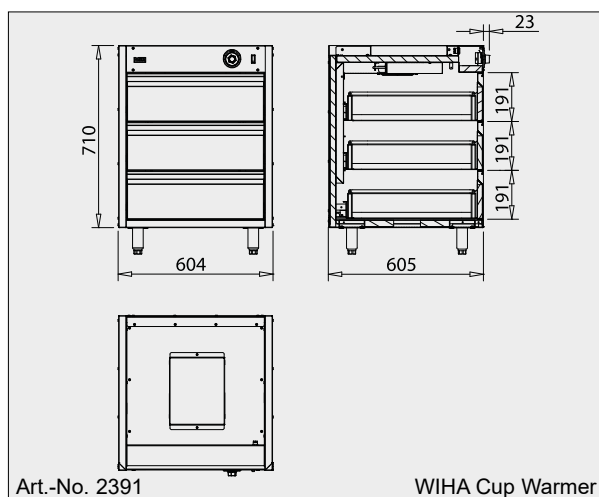
2382



Art.-No. 2382

WIHA Cup Warmer

The drawings are shown with special accessory that is not included.



Art.-No. 2391

WIHA Cup Warmer

SPECIAL WIDTHS

Open Module with Intermediate Shelf, Height=710 mm

In addition to the width, the body depth can also be reduced, if desired.

	<u>Art.-No.</u>
Width up to 400 mm	14300
Width up to 500 mm	14301
Width up to 600 mm	14302
Width up to 800 mm	14303
Width up to 1000 mm	14304

Design

Body is made entirely of stainless steel, material 1.4016. The exterior surface of the front side is ground. The intermediate shelf is height adjustable. Load capacity of the shelves is up to 50 kg. The upper support edges of the body are equipped with holes to screw on worktops.



SPECIAL WIDTHS

Module with Wing Door and Intermediate Shelf, Height=710 mm

In addition to the width, the body depth can also be reduced, if desired.

	<u>Art.-No.</u>
Width up to 400 mm, wing door hinge left	14310
Width up to 400 mm, wing door hinge right	14311
Width up to 500 mm, wing door hinge left	14312
Width up to 500 mm, wing door hinge right	14313
Width up to 600 mm, wing door hinge left	14314
Width up to 600 mm, wing door hinge right	14315

Wing door/Drawer lockable
(price per wing door/drawer) **13650**

Design

Body and wing door are made entirely of stainless steel, material 1.4016. The exterior surface of the front side is ground. The intermediate shelf is height adjustable. Load capacity of the shelves is up to 50 kg. The upper support edges of the body are equipped with holes to screw on worktops. The wing door panel contains an integrated handle bar.



SPECIAL WIDTHS

Module with 2 wing doors and Intermediate Shelf, H=710 mm

Design is similar to the module with wing door and intermediate shelf.

Load capacity of the shelves is up to 50 kg.

In addition to the width, the body depth can also be reduced, if desired.

	<u>Art.-No.</u>
Width up to 800 mm, with 2 wing doors	14316
Width up to 1000 mm, with 2 wing doors	14317
Width up to 1200 mm, with 2 wing doors	14318

Wing door/Drawer lockable
(price per wing door/drawer) **13650**



11
Under Counter
Refrigerators

SPECIAL WIDTHS

Module with Drawers, Height=710 mm

Indication of the usable heights from top to bottom.

<u>Usable height 150 / 400</u>	<u>Art.-No.</u>
Width up to 400 mm, 2 roller drawers,	14320
Width up to 500 mm, 2 roller drawers,	14321
Width up to 600 mm, 2 roller drawers,	14322

<u>Usable height 150 / 170 / 170</u>	
Width up to 400 mm, 3 roller drawers,	14325
Width up to 500 mm, 3 roller drawers,	14326
Width up to 600 mm, 3 roller drawers,	14327

Wing door/Drawer lockable
(price per wing door/drawer) **13650**

Design

Body and drawers are made entirely of stainless steel, material 1.4016. The exterior surface of the front side is ground. The upper support edges of the body are equipped with holes to screw on worktops. The drawers are fitted out with sturdy stainless-steel rollers (load capacity 50 kg). The drawer panels contain integrated handle bars made of stainless steel.



11. Under Counter Refrigerators

Accessories KUB 710



SPECIAL WIDTHS

Under Counter Module for Sinks, Height=710 mm

Standard height of the upper cover panel: approx. 310 mm
Usable height of the wing door compartment: 320 mm
The height of upper cover panel is also available in other sizes, if desired.

	<u>Art.-No.</u>
Width up to 400 mm, wing door hinge left	14330
Width up to 400 mm, wing door hinge right	14331
Width up to 500 mm, wing door hinge left	14332
Width up to 500 mm, wing door hinge right	14333
Width up to 600 mm, wing door hinge left	14334
Width up to 600 mm, wing door hinge right	14335
Width up to 800 mm, 2 wing doors	14340
Width up to 1000 mm, 2 wing doors	14341
Wing door/Drawer lockable (price per wing door/drawer)	13650



Design

Body and wing door are made entirely of stainless steel, material 1.4016. The exterior surface of the front side is ground.
The module is equipped with a cover panel in the upper area and a wing door in the lower part. On the rear side with cut-outs for the installation of water and waste water pipes.
The upper support edges of the body are equipped with holes to screw on worktops. The wing door panel contains an integrated handle bar.

SPECIAL WIDTHS

Module with Upper Cover Panel, Wing Door and Intermediate Shelf, Height=710 mm

Standard height of the upper cover panel: approx. 140 mm
Usable height of the wing door compartment: 470 mm
The height of upper cover panel is also available in other sizes, if desired.
In the upper cover panel, cut-outs are possible for controllers.
The body depth can be reduced, if desired.

	<u>Art.-No.</u>
Width up to 400 mm, wing door hinge left	14350
Width up to 400 mm, wing door hinge right	14351
Width up to 500 mm, wing door hinge left	14352
Width up to 500 mm, wing door hinge right	14353
Width up to 600 mm, wing door hinge left	14354
Width up to 600 mm, wing door hinge right	14355
Wing door/Drawer lockable (price per wing door/drawer)	13650



Design

Body and wing door are made entirely of stainless steel, material 1.4016. The exterior surface of the front side is ground. On the rear side located in the upper area behind the cover panel, the module is equipped with a cut-out for the running of cables.

The intermediate shelf is height adjustable. Load capacity of the shelves is up to 50 kg. The upper support edges of the body are equipped with holes to screw on worktops. The wing door panel contains an integrated handle bar.

11

Under Counter
Refrigerators

SPECIAL WIDTHS

Module with Upper Cover Panel and Drawers, H=710 mm

Height of the upper cover panel: approx. 140 mm

	<u>Art.-No.</u>
(UH=usable height)	
Width up to 400 mm, 2 roller drawers, UH=190/210	14360
Width up to 500 mm, 2 roller drawers, UH=190/210	14361
Width up to 600 mm, 2 roller drawers, UH=190/210	14362
Wing door/Drawer lockable (price per wing door/drawer)	13650

Design

Body and drawers are made entirely of stainless steel, material 1.4016. The exterior surface of the front side is ground. On the rear side located in the upper area behind the cover panel, the module is equipped with a cut-out for the running of cables. The upper support



edges of the body are equipped with holes to screw on worktops. The drawers are fitted out with sturdy stainless-steel rollers (load capacity 50 kg). The drawer panels contain integrated handle bars made of stainless steel.

Additional Intermediate Shelf for special widths:

In addition to the width, the body depth can also be reduced, if desired.

	<u>Art.-No.</u>
Body width up to 400 mm	13750
Body width up to 500 mm	13751
Body width up to 600 mm	13752
Body width up to 800 mm	13753
Body width up to 1000 mm	13754



Load capacity of the shelves is up to 50 kg.