

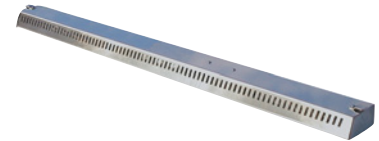
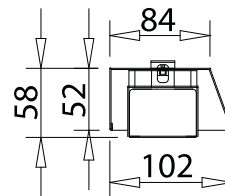
Reflector Bar with 500 Watts Safety Halogen Infrared Radiator (can be used together with lighting covers, see chapter 15)

Depending on the length equipped with several built-in 500 W heat radiators. Included with delivery is a 1.5 m long silicone connecting cable (without mains plug or without switch).

Please note: Make sure that there is good ventilation when installing the radiator. Maximum humidity of 75% at the installation place. Water condensation must not occur at the place of installation.

Hot air must be able to rise freely upwards. When used above a Bain-Marie, an operation is only permitted together with the Bain-Marie to avoid condensation. Distance to the surface to be kept warm approx. 300 mm to 350 mm.

Depth of the keep warm area 500 mm.



Length	Distance between supports	Art.-No.	Connection
435–830 mm	L+7 mm	5205	230V/500W
830–1225 mm	L+7 mm	5206	230V/1000W
1225–1620 mm	L+7 mm	5207	230V/1500W
1620–2000 mm	----	5208	230V/2000W

The length of the reflector bar must be 7 mm smaller than the center-to-center distance of the glass supports.

Included with delivery is a 1.5 m long silicone connecting cable (without mains plug). An on/off switch should be attached to the outside. The vent holes must not be covered – hot air must be able to rise upwards unhindered. The reflector bar is not suitable for the WiHA glass support system TOP 3535 SB.

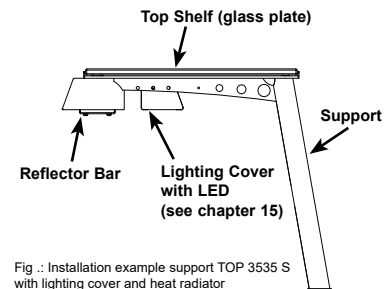


Fig. 1: Installation example support TOP 3535 S with lighting cover and heat radiator

Heat Bridge for Hanging or Free-Standing

With individually switchable radiators

- **Radiator units individually switchable**
- **Equipped with 500 Watts radiator modules**
Radiator with high infrared portion and bright light.
- **Double-protected!**
Longer lifespan and shatter protection by protective tube made of quartz glass above the lamp body.
Additional mechanical protection by stainless steel grille.



Heat Bridges for Hanging		
Length	Art.-No.	Connection
650 mm	14421	230V/500W
850 mm	14422	230V/1000W
1000 mm	14423	230V/1000W
1200 mm	14424	230V/1500W

Heat Bridges for Free-Standing		
Length	Art.-No.	Connection
650 mm	14401	230V/500W
850 mm	14402	230V/1000W
1000 mm	14403	230V/1000W
1200 mm	14404	230V/1500W



Design

Heat radiator with high infrared portion for heat dissipation. Suitable for casseroles, roasts, vegetables etc.

The heat radiator is entirely made of stainless steel. 500 watts heating elements are mounted inside of the reflector. They can be switched separately by a built-in switch. The heating elements are protected by a quartz glass tube and a metal grille. Water splash, cleaning agents, fingerprints etc. can no longer come in contact with the lamp body.

Included with delivery is a 1.5 m long silicone connecting cable with mains plug. Please note:

Make sure that there is good ventilation when installing the radiator. Hot air must be able to rise freely upwards. Maximum humidity at the installation place 75%. Water condensation must not occur at the place of installation.

Make sure that there is a distance of 300 mm between heat radiator and the keep warm surface.