

Tiered Refrigeration Module SKE 90 SP

Ideal climate for mid-size cream cakes, cakes and snacks

WiHA
Freshness System
(Special Accessory)
Patented

WiHA +
MOVE-DOWN
+ gas pressure springs

WiHA
MOVE-AWAY
Patented

NEW! With WIHA CLOUD CONTROL, optionally available, more infos on page 432.



WiHA
LONG-LIFE
Longer operating life of the cooling unit

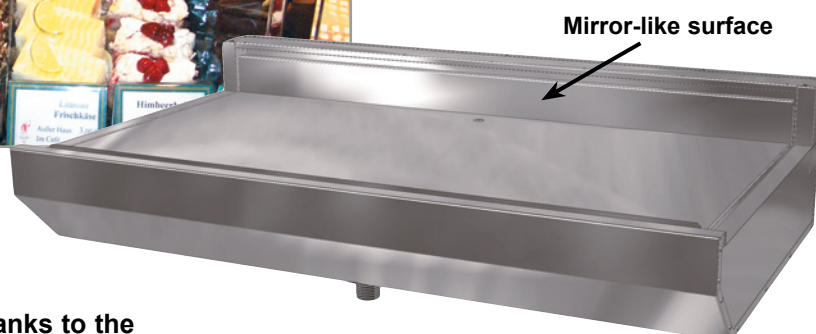
WiHA
ROUND-BOTTOM
Easy cleaning of the pan bottom

WiHA
SPLIT-CONTROL
(Special Accessory)
Flat and removable control panel

WiHA
CLOUD

2
Tiered
Installation

Preferred application:
Cream cakes, cakes, snacks with a merchandise height of up to 9 cm.



Food stays fresh for longer thanks to the patented FRESHNESS SYSTEM

- The air cooler can be easily folded down (MOVE-DOWN-PLUS), in case of R134a/R513A with additional gas pressure springs
- Longer operating life of the cooling unit (LONG-LIFE)
- Hygienic base with round shaped corners (ROUND-BOTTOM)
- 4°C cooling technology
- 2 air speeds
- Liftable evaporator
- With WIHA CLOUD CONTROL: smart control and monitoring via the WIHA app

Ideal climate for cream cakes

The cold reservoir created by the cascade design is an absolute must for sensitive cream cakes. Along with the large evaporator surface, high humidity is generated for gentle cooling.

The cakes remain fresh for longer when the cooling system includes the patented **WIHA FRESHNESS SYSTEM**.

The foreign bacteria and germs entering from the surrounding counter area accelerate the ageing process of cakes, tarts and flans. Our patented FRESHNESS SYSTEM filters and disinfects the circulating air stream and thus lays the foundation for keeping food fresh longer.

Base element UTB 51 optionally available, see table on page 406.

SKE 90 SP	For external cooling unit	With cooling unit and controller	Cooling power [-10°ET]	Connection cooling unit	
Model	Art.-No.	Art.-No.			
SKE 90 SP - 400 *	5956	20400	370 W	230V/210W	■
SKE 90 SP - 600	5928	20401	370 W	230V/270W	■■
SKE 90 SP - 800	5929	20402	450 W	230V/350W	■■■
SKE 90 SP - 1200	5930	20403	605 W	230V/390W	■■■■
SKE 90 SP - 1600	5931	20404	825 W	230V/540W	■■■■■
SKE 90 SP - 1600 D (2 air coolers)	5880	20407	825 W	230V/540W	■■■■■
SKE 90 SP - 2000 D (2 air coolers)	5932	20406 **	1060 W	230V/750W	■■■■■

The refrigeration units for external cooling units include an expansion valve for R134a/R513A and built-in temperature sensors.

The patented WIHA FRESHNESS SYSTEM, WIHA CLOUD CONTROL, protective machine cover and condensate pan/drain trap are available as accessories.

* Not available with FRESHNESS SYSTEM. ** Without base element, the cooling unit is connected via refrigerant couplings.

Special Accessories

	Art.-No.
Condensate pan mounted under the cooling unit	33196
Drain fitting 1 1/4" for connecting to the customer's drain	3815
TMP 620 controller for external cooling unit	12201
TMP 630-CLOUD controller with 2 freely usable outputs, for external cooling unit	33572
TMP 630 controller instead of TMP 620 with 2 freely usable outputs	12210
TMP 630-CLOUD controller instead of TMP 620 with 2 freely usable outputs	33568
Detachable control panel (SPLIT-CONTROL)	12219
extra charge for device with cooling unit in the base housing	
Protective machine cover type 370-825	33194
Protective machine cover type 825 (2 air coolers)	33195
Air cooler for operation with refrigerant CO ₂	10197
(price per air cooler, see page 404)	
Quick-connect cleaning head (on-site drain is necessary)	6322

	Art.-No.
Side wall heightening for SKE	6403
(The side walls are designed in same height as the height of the customer side.)	
DUO-Bridge SKE 90	6400
To connect two adjacent mounted SKE air chiller units.	
Patented WIHA FRESHNESS SYSTEM see page 45.	

Description

Chiller unit with circulating air for cooling cakes, cream cakes and snacks with a merchandise height of up to 9 cm max.

The air baffle located behind the merchandise has a mirror-like surface. To operate it, the customer should provide a glass top that should only be open on the air blow-off side.

Temperature: < 5°C at 25°C/60% relative humidity (climate class 3 according to DIN EN ISO 23953).

Commercial product for the installation in stationary food and service counter. For design details of the model, see page 46.

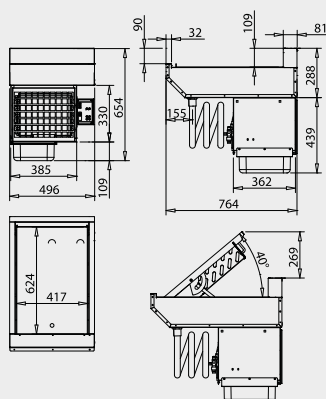
2. Air Chiller Units

tiered installation



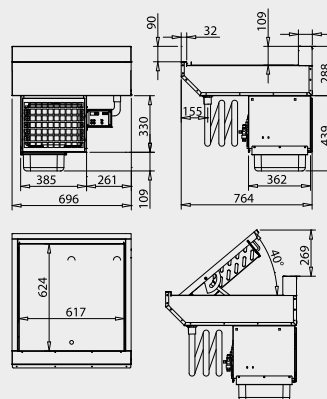
2

Tiered
Installation



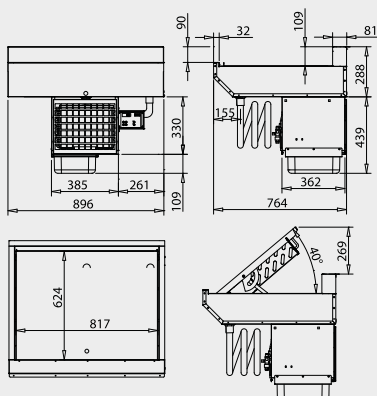
Art.-No. 20400

WIHA SKE 90 SP - 400



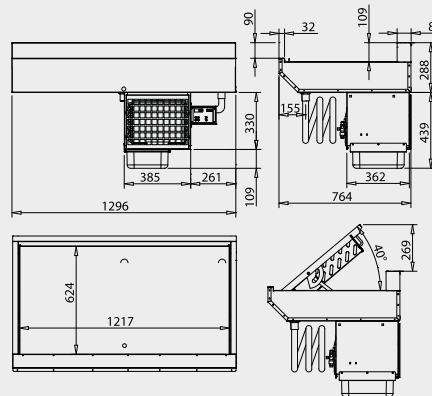
Art.-No. 20401

WIHA SKE 90 SP - 600



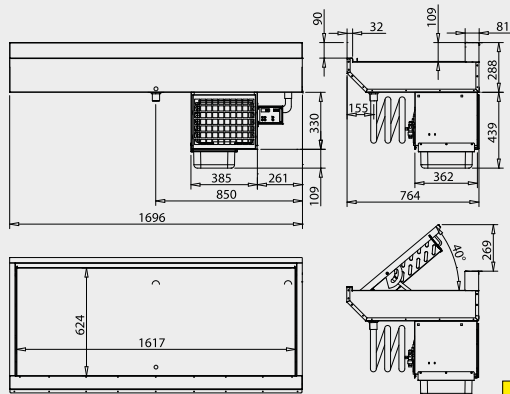
Art.-No. 20402

WIHA SKE 90 SP - 800



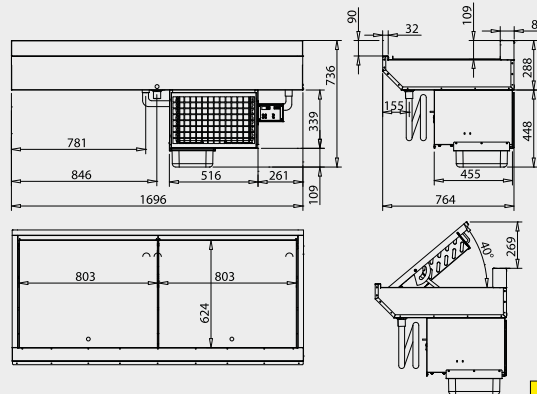
Art.-No. 20403

WIHA SKE 90 SP - 1200



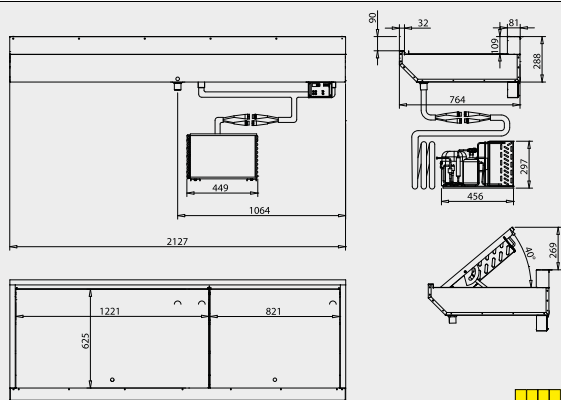
Art.-No. 20404

WIHA SKE 90 SP - 1600



Art.-No. 20407

WIHA SKE 90 SP - 1600 D



Art.-No. 20406

WIHA SKE 90 SP - 2000 D

Tip: The patented WIHA FRESHNESS SYSTEM for keeping food fresh longer
Cakes, tarts and flans remain fresh for longer when foreign germs and bacteria that accelerate the ageing process are reduced. Our new FRESHNESS SYSTEM contains a highly effective patented combination of a circulating air filter and a UV disinfecting device. This puts cakes, tarts and flans in a purified protective atmosphere, which keeps them fresh for longer.

The drawings are shown with special accessory that is not included; more drawings are available on www.wiha-web.com under "Info Centre / Customer Area".