

WHCX SERIES Outdoor Lighting

WHCX-48-80W-MCTP

CYLINDER WALL PACK, POWER AND CCT ADJUSTABLE

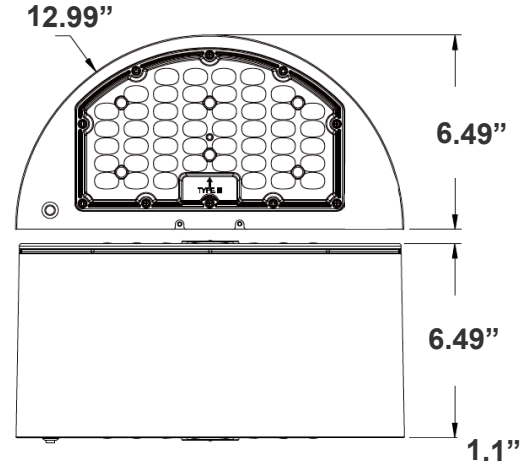
MCTP Multi Color Temperature & Multi Power/Wattage (Selectable)

Customer Name: _____

Project Name: _____

Note: _____

Type: _____



LED Wall Pack Light series can be widely used as Exterior or Interior LED lighting for Hotels, Garages, Commercial Buildings, Public areas, Schools and Hospitals, etc.

12.99" (W) x 6.49" (H) x 6.49" (D)

Features

- High Light Transmittance, Anti-UV and Fire Resistant PC Lens
- 7-Year Warranty
- Die-Cast Aluminum With Powder Coat Finish (Dark Bronze)
- Multi CCT and Power (Switches are inside fixture)

Technical Specifications

Electrical:

- Voltage: 120-277VAC 60Hz
- Wattage: 48W/64W/80W
- Power Factor: >0.95
- Efficacy: 145 LPW

Mechanical:

- Twist-Lock Zhaga Socket Pre-Installed. See Motion Sensor Accessories
- Die-Cast Aluminum With Powder Coat Finish (Dark Bronze)
- DC Button Photocell with ON/OFF switch Included
- Integrated Uplight, Can be Controlled By The Switch. UP: 10% DOWN: 90%
- High Light Transmittance, Anti-UV and Fire Resistant Shatterproof PC Lens
- Operating Temperature: -4°F to 104°F
- Full Cutoff, Dark Sky Compliant
- IP 65, Wet Location
- 7-Year Warranty

Lighting:

- Dimming: 0~10V Dimmable
- Multi CCT and Power (Switches are inside fixture)
- The Type III Distribution Is Used for Wide WalkWays, on Ramps and Entrance Roadways, As Well As Other Long, Narrow Lighting
- Total Lumens: 11600LM Max.
- Color Temperatures: 3000K/4000K/5000K
- Color Rendering Index: CRI ≥ 80
- Rated Life: 70,000 Hrs

Applications:

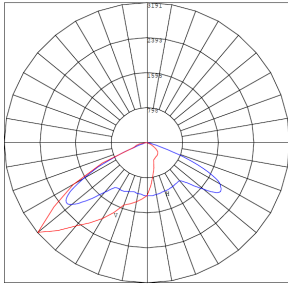
- LED Wall Pack Light series can be widely used as Exterior or Interior LED lighting for Hotels, Garages, Commercial Buildings, Public areas, Schools and Hospitals, etc.

Other Models:

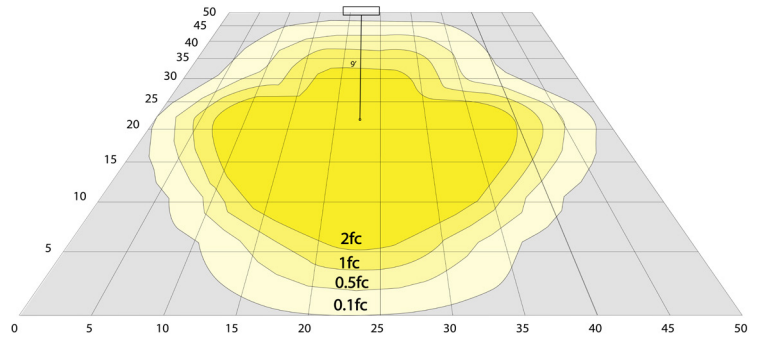
- 40W | 5800LM | WHCX-24-40W-MCTP



Photometrics: WHCX-48-80W-MCTP



BUD Rating: B0-U0-G1



Area 45'x 50' Mounting Height: 9'

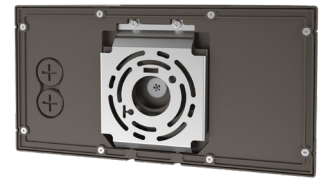
Other Views:



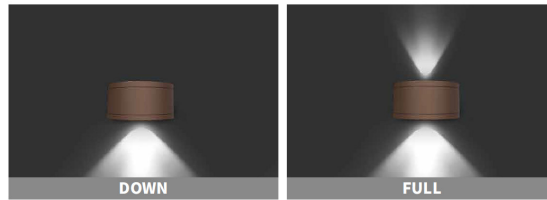
Side View



Front View



Back View



Integrated Uplight, Can be Controlled By The Switch

Performance Table: WHCX-48-80W-MCTP

MODEL NO.	Wattage	Voltage	Lumens	Color Temp.	BUG Rating	LPW
WHCX-48-80W-MCTP	48W	120~277V	6960LM	3000K	B0-U0-G1	145
	64W		9280LM	4000K		
	80W		11600LM	5000K		

Sample Ordering

Model Wattage. Wattage. Color Temp.

WHCX - 48 - 80W - MCTP

Factory-Installed Options:

- Blank = No Option For Accessories
- WEC-3RC = OPTIONAL REMOTE
- OPT-SEN-3MRLV-5 = PROGRAMMABLE MICROWAVE (BI-LEVEL FOR 80W)
- OPT-EM-WHCX-80W = EMERGENCY BACK UP BATTERY
- OPT-PC-B = BUTTON
- OPT-WP-480V = CHANGE VOLTAGE
- OPT-SEN-3MLV-5 = PROGRAMMABLE MICROWAVE (BI-LEVEL FOR 80W)
- OPT-CLR-85(BK/GR/SR/WH) = PAINT
- OPT-CLR-85MC (260 SET UP FEE PER PROJECT) = PAINT
- OPT-TRS-T20 = TAMPER RESISTANT SCREW

FACTORY-INSTALLED OPTIONS:



OPT-PC-B



WEC-3RC



OPT-EM-WHCX-80W



OPT-SEN-3MRLV-5



COLOR CHART: * Choose from one of our Premium Colors with no set-up fee.

Gloss:



SILVER METALLIC
70 GLOSS
T357-GR105



SILVER METALLIC
30 GLOSS
T353-GR06



DARK RED 90
GLOSS
P009-RD02



INTERNATIONAL
ORANGE 90
GLOSS
T009-OG26



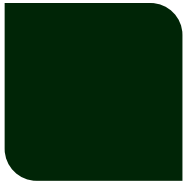
SAFETY ORANGE
90 GLOSS
T009-OG01



YELLOW 90
GLOSS
T009-YL14



YELLOW 90
GLOSS
T009-YL01



TRAFFIC GREEN
70 GLOSS
T007-GN16



GREEN 70 GLOSS
T007-GN13



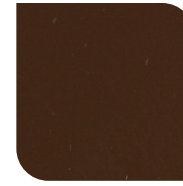
GREEN 60 GLOSS
C006-GN03



BLUE 90 GLOSS
T009-BL01



DARK BLUE 80
GLOSS
T008-BL20



RAL 8028 TERRA
BROWN 90 GLOSS
C209-BR358

Hammer:



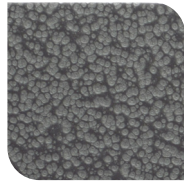
WHITE HAMMER
T013-WH09



BEIGE HAMMER
T013-BG38



GREY HAMMER
C013-GR08



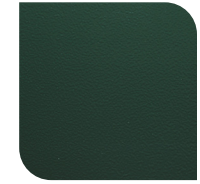
SILVER
HAMMERTONE
T064-GR05



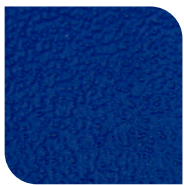
BLACK HAMMER
T013-BK62



RED HAMMER
T013-RD15



GREEN HAMMER
T013-GN220



BLUE HAMMER
T013-BL468



BRONZE HAMMER
T012-BR161

Texture:



WHITE TEXTURE
C031-WH120



FLINT GRAY
TEXTURE
T243-GR522



BLACK TEXTURE
C241-BK109



RED TEXTURE
T241-RD129



BLUE TEXTURE
C241-BL544



OIL RUBBED
BRONZE TEXTURE
T291-BR251

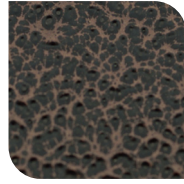
Vein:



BLACK/WHITE
VEIN
T075-WH34



SILVER VEIN
T375-BK26



COPPER VEIN
EXTERIOR
T075-BK211



GOLD VEIN
T375-BK10



COPPER VEIN
T375-BK07

