

WHCX SERIES Outdoor Lighting

WHCX-24-40W-MCTP

WHCX-24-40W-MCTP-BK

WHCX-24-40W-MCTP-SIL

WHCX-24-40W-MCTP-WH

CYLINDER WALL PACK, POWER AND CCT ADJUSTABLE

MCTP Multi Color Temperature & Multi Power/Wattage (Selectable)



Avail Finishes:



LED Wall Pack Light series can be widely used as Exterior or Interior LED lighting for Hotels, Garages, Commercial Buildings, Public areas, Schools and Hospitals, etc.

WESTGATE

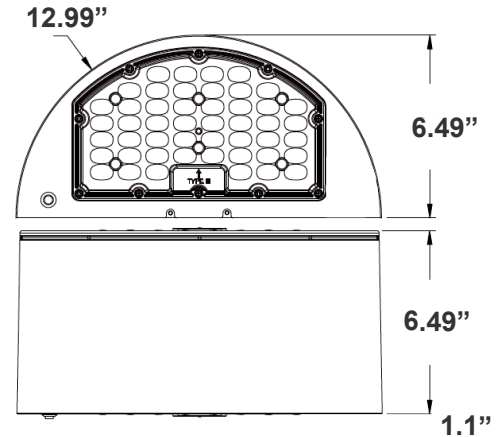
THE FUTURE IS HERE...AND IT'S QUITE BRIGHT!

Customer Name: _____

Project Name: _____

Note: _____

Type: _____



12.99" (W) x 6.49" (H) x 6.49" (D)

Features

- High Light Transmittance, Anti-UV and Fire Resistant PC Lens
- 7-Year Warranty
- Die-Cast Aluminum With Powder Coat Finish (Dark Bronze)
- Multi CCT and Power (Switches are inside fixture)

Technical Specifications

Electrical:

- Voltage: 120-277VAC 60Hz
- Wattage: 24W/32W/40W
- Power Factor: >0.95
- Efficacy: 145 LPW

Mechanical:

- Die-Cast Aluminum With Powder Coat Finish DC Button Photocell with ON/OFF switch Included
- Integrated Uplight, Can be Controlled By The Switch. UP: 10% DOWN: 90%
- High Light Transmittance, Anti-UV and Fire Resistant Shatterproof PC Lens
- Operating Temperature: -4°F to 104°F
- Full Cutoff, Dark Sky Compliant
- IP 65, Wet Location
- 7-Year Warranty

Lighting:

- Dimming: 0~10V Dimmable
- Multi CCT and Power (Switches are inside fixture)
- The Type III Distribution Is Used for Wide WalkWays, on Ramps and Entrance Roadways, As Well As Other Long, Narrow Lighting
- Total Lumens: 5800LM Max.
- Color Temperatures: 3000K/4000K/5000K
- Color Rendering Index: CRI ≥ 80
- Rated Life: 70,000 Hrs

Applications:

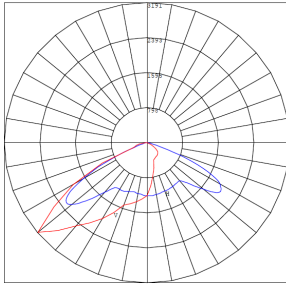
- LED Wall Pack Light series can be widely used as Exterior or Interior LED lighting for Hotels, Garages, Commercial Buildings, Public areas, Schools and Hospitals, etc.



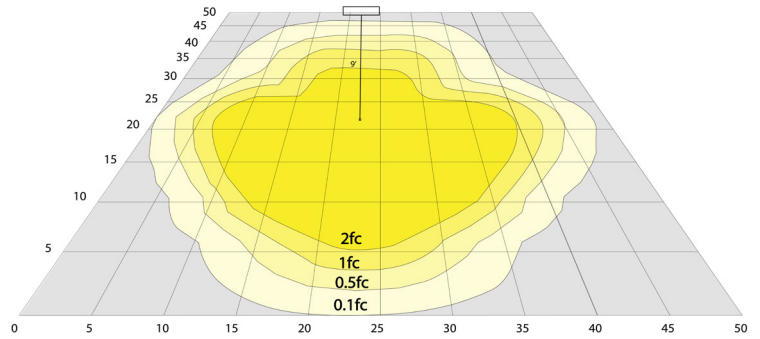
Phone: (877) 805-2252 | Fax: (877) 805-2252
www.westgatemfg.com |



Photometrics: WHCX-24-40W-MCTP



BUD Rating: B0-U0-G1



Area 45'x 50' Mounting Height: 9'

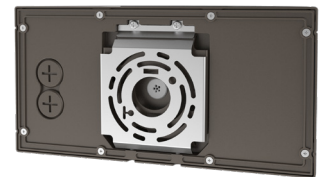
Other Views:



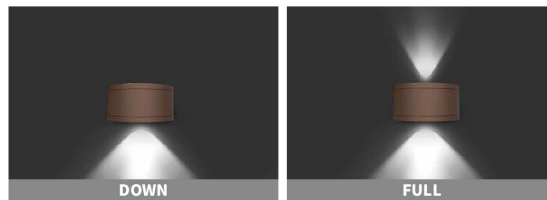
Side View



Front View



Back View



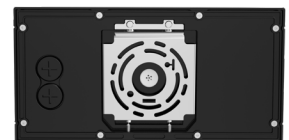
Integrated Uplight, Can be Controlled By The Switch



Side View



Front View



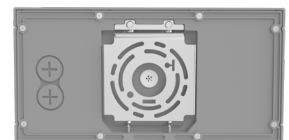
Back View



Side View



Front View



Back View



Side View



Front View



Back View



Performance Table: WHCX-24-40W-MCTP

MODEL NO.	Wattage	Voltage	Lumens	Color Temp.	BUG Rating	LPW
WHCX-24-40W-MCTP	24W	120~277V	3480LM	3000K	B0-U0-G1	145
WHCX-24-40W-MCTP-BK	32W		4640LM	4000K		
WHCX-24-40W-MCTP-WH	40W		5800LM	5000K		
WHCX-24-40W-MCTP-SIL						

Sample Ordering

Model	Wattage.	Wattage.	Color Temp.
WHCX	-	24	-
		40W	-
			MCTP

Blank = Bronze
BK = Black
SIL = Silver
WH = White

Factory-Installed Options:

Blank = No Option For Accessories
 OPT-SEN-3MRLV-5 = PROGRAMMABLE MICROWAVE (BI-LEVEL FOR 80W)
 OPT-EM-WHCX-40W = EMERGENCY BACK UP BATTERY
 OPT-WP-480V = CHANGE VOLTAGE
 OPT-SEN-3MLV-5 = PROGRAMMABLE MICROWAVE (BI-LEVEL FOR 80W)
 OPT-CLR-85(BK/GR/SR/WH) = PAINT
 OPT-CLR-85MC (260 SET UP FEE PER PROJECT) = PAINT
 OPT-TRS-T20 = TAMPER RESISTANT SCREW
 WEC-8RC = REMOTE CONTROL

FACTORY-INSTALLED OPTIONS:



**SENSOR
OPTION**
OPT-SEN-3MRLV-5



OPT-EM-WHCX-40W



WEC-8RC

