

# WHCX SERIES Outdoor Lighting

## WHCX-24-40W-MCTP

CYLINDER WALL PACK, POWER AND CCT ADJUSTABLE

**MCTP** Multi Color Temperature & Multi Power/Wattage (Selectable)

**WESTGATE**  
THE FUTURE IS HERE...AND IT'S QUITE BRIGHT!

Customer Name: \_\_\_\_\_

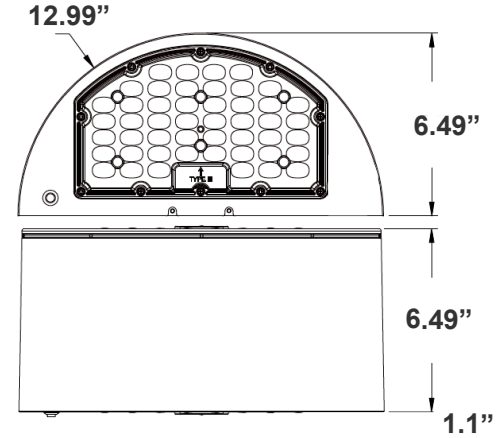
Project Name: \_\_\_\_\_

Note: \_\_\_\_\_

Type: \_\_\_\_\_



LED Wall Pack Light series can be widely used as Exterior or Interior LED lighting for Hotels, Garages, Commercial Buildings, Public areas, Schools and Hospitals, etc.



12.99" (W) x 6.49" (H) x 6.49" (D)

## Features

- High Light Transmittance, Anti-UV and Fire Resistant PC Lens
- 7-Year Warranty
- Die-Cast Aluminum With Powder Coat Finish (Dark Bronze)
- Multi CCT and Power (Switches are inside fixture)

## Technical Specifications

### Electrical:

- Voltage: 120-277VAC 60Hz
- Wattage: 24W/32W/40W
- Power Factor: >0.95
- Efficacy: 145 LPW

### Mechanical:

- Die-Cast Aluminum With Powder Coat Finish (Dark Bronze)
- DC Button Photocell with ON/OFF switch Included
- Integrated Uplight, Can be Controlled By The Switch. UP: 10% DOWN: 90%
- High Light Transmittance, Anti-UV and Fire Resistant Shatterproof PC Lens
- Operating Temperature: -4°F to 104°F
- Full Cutoff, Dark Sky Compliant
- IP 65, Wet Location
- 7-Year Warranty

### Lighting:

- Dimming: 0~10V Dimmable
- Multi CCT and Power (Switches are inside fixture)
- The Type III Distribution Is Used for Wide WalkWays, on Ramps and Entrance Roadways, As Well As Other Long, Narrow Lighting
- Total Lumens: 5800LM Max.
- Color Temperatures: 3000K/4000K/5000K
- Color Rendering Index: CRI ≥ 80
- Rated Life: 70,000 Hrs

### Applications:

- LED Wall Pack Light series can be widely used as Exterior or Interior LED lighting for Hotels, Garages, Commercial Buildings, Public areas, Schools and Hospitals, etc.

### Other Models:

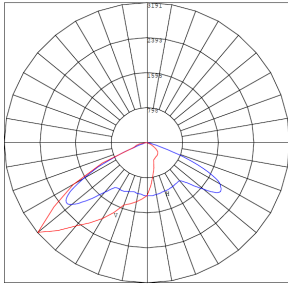
- 80W | 11600LM | WHCX-48-80W-MCTP



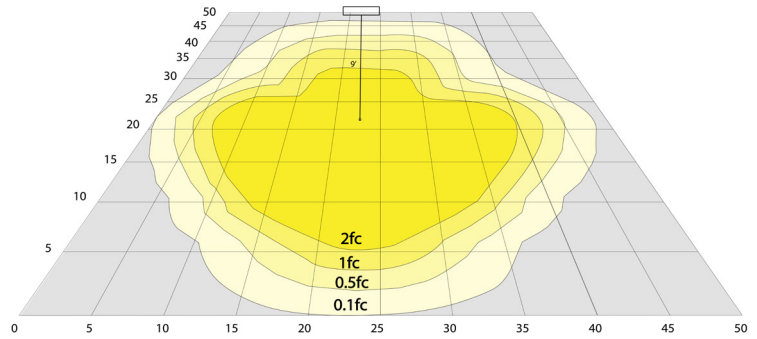
Phone: (877) 805-2252 | Fax: (877) 805-2252  
www.westgatemfg.com |



**Photometrics:** WHCX-24-40W-MCTP



BUD Rating: B0-U0-G1



Area 45'x 50' Mounting Height: 9'

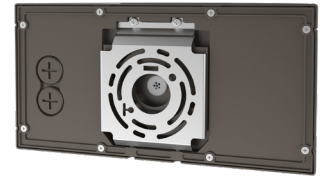
**Other Views:**



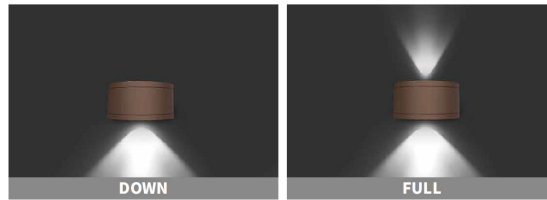
Side View



Front View



Back View



Integrated Uplight, Can be Controlled By The Switch

**Performance Table:** WHCX-24-40W-MCTP

MODEL NO.	Wattage	Voltage	Lumens	Color Temp.	BUG Rating	LPW
WHCX-24-40W-MCTP	24W	120~277V	3480LM	3000K	B0-U0-G1	145
	32W		4640LM	4000K		
	40W		5800LM	5000K		

**Sample Ordering**

Model    Wattage.    Wattage.    Color Temp.

WHCX - 24 - 40W - MCTP

**Factory-Installed Options:**

- Blank = No Option For Accessories
- OPT-SEN-3MRLV-5 = PROGRAMMABLE MICROWAVE (BI-LEVEL FOR 80W)
- OPT-EM-WHCX-40W = EMERGENCY BACK UP BATTERY
- OPT-WP-480V = CHANGE VOLTAGE
- OPT-SEN-3MLV-5 = PROGRAMMABLE MICROWAVE (BI-LEVEL FOR 80W)
- OPT-CLR-85(BK/GR/SR/WH) = PAINT
- OPT-CLR-85MC (260 SET UP FEE PER PROJECT) = PAINT
- OPT-TRS-T20 = TAMPER RESISTANT SCREW

**FACTORY-INSTALLED OPTIONS:**



OPT-EM-WHCX-40W

