

# WCF SERIES Commercial Lighting

WCF-UD-EFT-36W-MCTP-DD-BK

WCF-UD-EFT-36W-MCTP-DD-WH

3FT FLAT WALL LIGHT. SEPARATE UP AND DOWN CONTROLS - DUAL DIMMING

**MCTP** Multi Color Temperature & Multi Power/Wattage (Selectable)

# WESTGATE

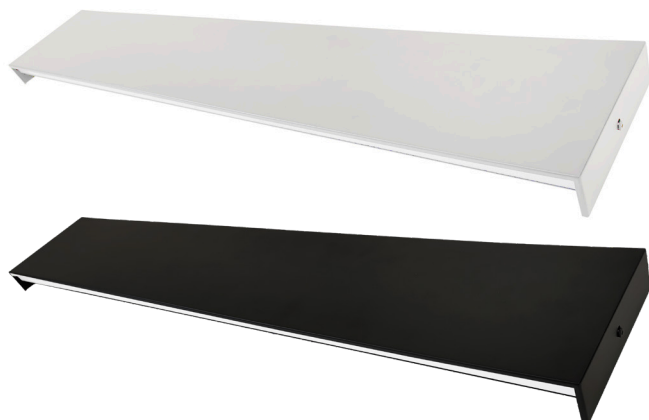
THE FUTURE IS HERE...AND IT'S QUITE BRIGHT!

Customer Name: \_\_\_\_\_

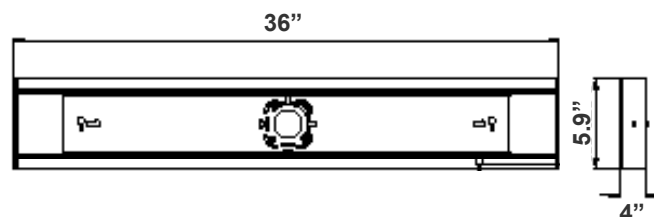
Project Name: \_\_\_\_\_

Note: \_\_\_\_\_

Type: \_\_\_\_\_



Avail Finish:



5.9"(H) x 36"(W) x 4"(D)

The Patient Overbed Healthcare Light from Westgate Mfg offers soft, glare-free illumination with an easy-to-use pull chain for patient control and an integrated indicator light for operational status. Designed for energy efficiency and durability, it ensures long-lasting performance and reduced costs. Ideal for hospitals, nursing homes, and assisted living facilities, this light enhances patient care and satisfaction.

## Features

- 5-Year Warranty
- 50,000 Hours Rated Life
- Lens: Frosted Diffuse Polycarbonate Lens
- MCTP: Multi Color Temperature and Power

## Technical Specifications

### Electrical:

- Voltage: 120-277V AC 50/60Hz
- Wattage: 36W
- Power Factor: >0.9
- Efficacy: 77 LPW

### Mechanical:

- White and Black Finishes
- Housing: Heavy Die-Formed Steel, White Powder Coated
- Lens Snaps Into The Tabs Of The Housing Fixture
- Mounting: Surface Mount, Wall Mount
- Operating Temperature: -4°F -113°F
- Suitable For Damp Location
- 5-Year Warranty

### Lighting:

- Dimming: (Dual Function) Triac Dimmable at 120V & 0-10V Dimming at 120-277V
- MCTP: Multi Color Temperature and Power
- Total Lumens: 2800LM
- Color Rendering Index: CRI ≥ 80
- Beam Angle: 120°
- 50,000 Hours Rated Life

### Applications:

- Hospitals
- Nursing homes
- Assisted living facilities
- Rehabilitation centers
- Hospice care facilities

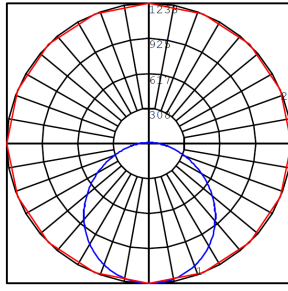
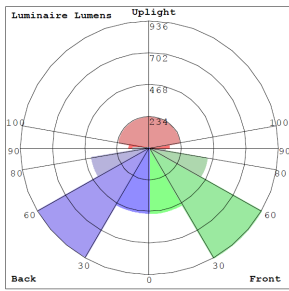


Phone: (877) 805-2252 | Fax: (877) 805-2252  
www.westgatemfg.com

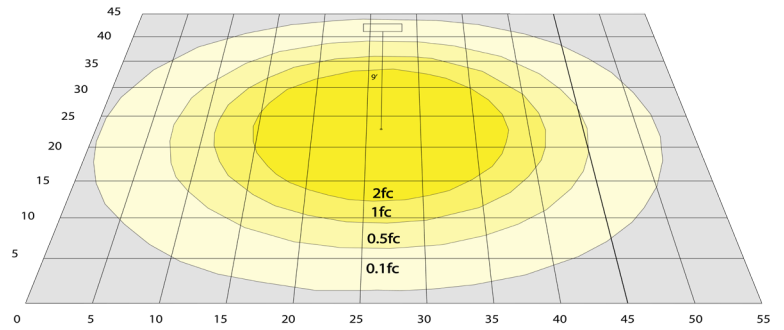


WG-07112024

## Photometrics: WCF-UD-EFT-36W-MCTP-DD



BUD Rating: B1-U3-G2



60W 5000K, Area 45'x 55' Mounting Height: 9'

## Other Views:

White:



Side View



Front View

Black:



Side View



Front View

## Performance Table: WCF-UD-EFT-36W-MCTP-DD

MODEL NO.	Wattage	Voltage	Lumens	Color Temp.	BUG Rating	LPW
WCF-UD-EFT-36W-MCTP-DD-BK WCF-UD-EFT-36W-MCTP-DD-WH	36W	120~277V	2800LM	2700K 3000K 4000K	B1-U3-G2	77

## Sample Ordering

Model	Model	Size	Wattage	Color Temp.	Dimming	Finish						
WCF	-	UD	-	EFT	-	36W	-	MCTP	-	DD	-	

## Factory-Installed Options:

Blank = No Option For Accessories  
 OPT-HBC-125TL-WH = NEMA TWIST-LOCK PLUG 8FT, 15A, 125V, WHITE  
 OPT-HBC-277TL-WH = NEMA TWIST-LOCK PLUG 8FT, 15A, 277V, WHITE  
 OPT-HBC-125SB-WH = STRAIGHT BLADE PLUG 10FT, 15A, 125V, 3-CONDUCTOR 18AWG, WHITE

## FACTORY-INSTALLED OPTIONS:



OPT-HBC-125SB-WH OPT-HBC-125TL-WH OPT-HBC-277TL-WH

