

**TSR SERIES**  
OUTDOOR LIGHTING

**MCT5**

TSR-IP66-80D-4FT-MCT5-D-BK  
TSR-IP66-80D-4FT-MCT5-D-WH



Technical Drawing: 1.97" (D) x 51.18" (W) x 5.79" (H)

**DESCRIPTION:**

- Architectural IP66-rated LED sign light / wall-mounted tubular luminaire
- Designed for exterior sign illumination, facade washing, and architectural accent lighting
- Rotatable light tube with dual adjustable mounting arms for precise aiming
- Modular system allows continuous linear runs using inline coupling accessories
- Suitable for wet locations and harsh outdoor environments

**APPLICATIONS:**

- Exterior sign illumination
- Channel letters and cabinet signs
- Architectural facade washing
- Wayfinding signage
- Retail storefronts
- Hospitality and mixed-use buildings

Customer Name: \_\_\_\_\_

Project Name: \_\_\_\_\_

Note: \_\_\_\_\_

Type: \_\_\_\_\_

**FEATURES:**

- Light Source: Integrated high-output LED module
- Dimming Wires: Factory-installed purple and gray leads
- Not intended for phase-cut dimming

**SPECIFICATIONS:**

**ELECTRICAL:**

- Input Voltage: 120-277VAC, 50/60Hz
- Power Factor:  $\geq 0.90$
- Wattage: 30W
- Total Harmonic Distortion:  $< 20\%$
- Luminous Efficacy: Up to  $\sim 130$  lm/W
- Driver Type: Constant current, isolated
- Inrush Current: Low inrush design suitable for multiple fixtures on a circuit
- Class: Class I luminaire

**MECHANICAL:**

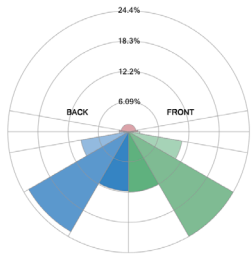
- Housing Material: Extruded aluminum body
- Finish: Polyester powder coat, corrosion-resistant
- Standard Colors: White, Black
- Mounting Arms: Dual arms with locking gripper system
- Rotation Locking: Mechanical locking once aimed
- Wall mount standard using surface canopy
- Ceiling mount capable using mounting base plate
- Dual-arm mounting provides stability for longer runs
- Field-adjustable tilt and rotation without opening the optical chamber
- Compatible with extension arm accessories for increased stand-off from wall or sign face
- Gasketed construction to prevent water and dust ingress
- IP Rating: IP66
- Suitable for Wet locations

**LIGHTING:**

- Dimmable: 0 ~ 10V Dimming
- Total Lumens: 2790LM
- Color Temperature: 3000K/3500K/4000K/5000K
- Multi-CCT (Selectable Switch Inside Fixture)
- Up Light Option Available
- Color Rendering Index:  $\geq 80$
- Beam Angle:
  - 80° beam for close and medium throw
- Ambient Operating Temperature:  $-22^{\circ}\text{F}$  to  $122^{\circ}\text{F}$  ( $-30^{\circ}\text{C}$  to  $50^{\circ}\text{C}$ )
- Rated Life: 50,000 hrs
- 5-Year Warranty

# PHOTOMETRICS

BUG rating



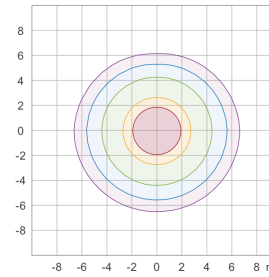
Rating: B1 U2 G1

Forward Light		
Low (0-30°)	328	12.2%
Medium (30-60°)	665	24.4%
High (60-80°)	284.2	10.0%
Very High (80-90°)	61.06	2.27%
Back Light		
Low (0-30°)	322.1	12.0%
Medium (30-60°)	625.7	23.3%
High (60-80°)	282.1	9.75%
Very High (80-90°)	50.6	1.88%
Uplight		
Low (90-100°)	50.01	1.86%
High (100-180°)	40.2	1.49%
<b>Total</b>	<b>2689</b>	<b>100%</b>

IESNA TM-15-07 Luminaire Classification System For Outdoor Luminaires

BUG Rating: B1-U2-G1

Iso-illuminance plot



50.0 %	46.1 lx
30.0 %	27.7 lx
10.0 %	9.23 lx
5.0 %	4.61 lx
3.0 %	2.77 lx

Peak illuminance: 92.3 lx  
Mounting height: 3 m  
Number of c-planes: 4

Area 8'x8'

# PERFORMANCE TABLE

MODEL NO.	WATTAGE	VOLTAGE	LUMENS	COLOR TEMP.	BUG RATING	LPW
TSR-IP66-80D-4FT-MCT5-D-WH TSR-IP66-80D-4FT-MCT5-D-BK	30W	120-277V	2970LM	2700K 3000K 3000K 4000K 5000K	B2-U3-G1	99

# ACCESSORIES

MODEL NO.	DESCRIPTION	IMAGE
TSR-IP66-ERK-WH TSR-IP66-ERK-BK	TSR Sign Light 12in Extension Rod Kit WH/BK	
TSR-IP66-COUP-WH TSR-IP66-COUP-BK	TSR Sign Light Inline Coupling With Incl. Rod Kit WH/BK	

