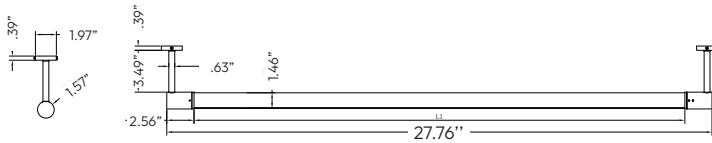


TSR SERIES
OUTDOOR LIGHTING



TSR-IP66-80D-2FT-MCT5-D-BK
TSR-IP66-80D-2FT-MCT5-D-WH



Technical Drawing: 1.97" (L) x 27.76" (W) x 5.79" (H)

DESCRIPTION:

- Architectural IP66-rated LED sign light / wall-mounted tubular luminaire
- Designed for exterior sign illumination, facade washing, and architectural accent lighting
- Rotatable light tube with dual adjustable mounting arms for precise aiming
- Modular system allows continuous linear runs using inline coupling accessories
- Suitable for wet locations and harsh outdoor environments

APPLICATIONS:

- Exterior sign illumination
- Channel letters and cabinet signs
- Architectural facade washing
- Wayfinding signage
- Retail storefronts
- Hospitality and mixed-use buildings

Customer Name: _____

Project Name: _____

Note: _____

Type: _____

FEATURES:

- Light Source: Integrated high-output LED module
- Dimming Wires: Factory-installed purple and gray leads
- Not intended for phase-cut dimming

SPECIFICATIONS:

ELECTRICAL:

- Input Voltage: 120-277VAC, 50/60Hz
- Power Factor: ≥ 0.90
- Wattage: 15W
- Total Harmonic Distortion: $< 20\%$
- Luminous Efficacy: Up to ~ 130 lm/W
- Driver Type: Constant current, isolated
- Inrush Current: Low inrush design suitable for multiple fixtures on a circuit
- Class: Class I luminaire

MECHANICAL:

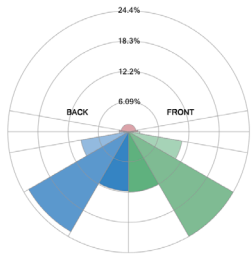
- Housing Material: Extruded aluminum body
- Finish: Polyester powder coat, corrosion-resistant
- Standard Colors: White, Black
- Mounting Arms: Dual arms with locking gripper system
- Rotation Locking: Mechanical locking once aimed
- Wall mount standard using surface canopy
- Ceiling mount capable using mounting base plate
- Dual-arm mounting provides stability for longer runs
- Field-adjustable tilt and rotation without opening the optical chamber
- Compatible with extension arm accessories for increased stand-off from wall or sign face
- Gasketed construction to prevent water and dust ingress
- IP Rating: IP66
- Suitable for Wet locations

LIGHTING:

- Dimmable: 0 ~ 10V Dimming
- Total Lumens: 1395LM
- Color Temperature: 3000K/3500K/4000K/5000K
- Multi-CCT (Selectable Switch Inside Fixture)
- Up Light Option Available
- Color Rendering Index: ≥ 80
- Beam Angle:
 - 80° beam for close and medium throw
- Ambient Operating Temperature: -22°F to 122°F (-30°C to 50°C)
- Rated Life: 50,000 hrs
- 5-Year Warranty

PHOTOMETRICS

BUG rating



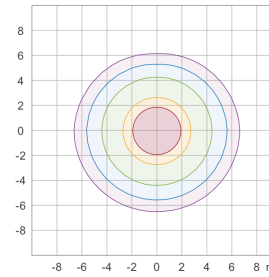
Rating: B1 U2 G1

Forward Light		
Low (0-30°)	328	12.2%
Medium (30-60°)	665	24.4%
High (60-80°)	284.2	10.0%
Very High (80-90°)	61.06	2.27%
Back Light		
Low (0-30°)	322.1	12.0%
Medium (30-60°)	625.7	23.3%
High (60-80°)	282.1	9.75%
Very High (80-90°)	50.6	1.88%
Uplight		
Low (90-100°)	50.01	1.86%
High (100-180°)	40.2	1.49%
Total	2689	100%

IESNA TM-15-07 Luminaire Classification System For Outdoor Luminaires

BUG Rating: B1-U2-G1

Iso-illuminance plot



50.0 %	46.1 lx
30.0 %	27.7 lx
10.0 %	9.23 lx
5.0 %	4.61 lx
3.0 %	2.77 lx

Peak illuminance: 92.3 lx
Mounting height: 3 m
Number of c-planes: 4

Area 8'x8'

PERFORMANCE TABLE

MODEL NO.	WATTAGE	VOLTAGE	LUMENS	COLOR TEMP.	BUG RATING	LPW
TSR-IP66-80D-2FT-MCT5-D-WH TSR-IP66-80D-2FT-MCT5-D-BK	15W	120-277V	1395LM	2700K 3000K 3000K 4000K 5000K	B2-U3-G1	93

ACCESSORIES

MODEL NO.	DESCRIPTION	IMAGE
TSR-IP66-ERK-WH TSR-IP66-ERK-BK	TSR Sign Light 12in Extension Rod Kit WH/BK	
TSR-IP66-COUP-WH TSR-IP66-COUP-BK	TSR Sign Light Inline Coupling With Incl. Rod Kit WH/BK	

