

TRS SERIES Commercial Lighting

TRS-10-20W-MCTP-36D-WH

TRS-10-20W-MCTP-36D-BK

BUILDER SERIES TRACK HEADS WITH EXT. DRIVERS, POWER AND CCT ADJUSTABLE

MCTP Multi Color Temperature & Multi Power/Wattage (Selectable)

WESTGATE

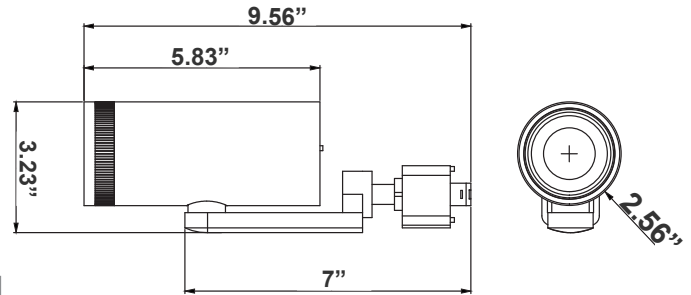
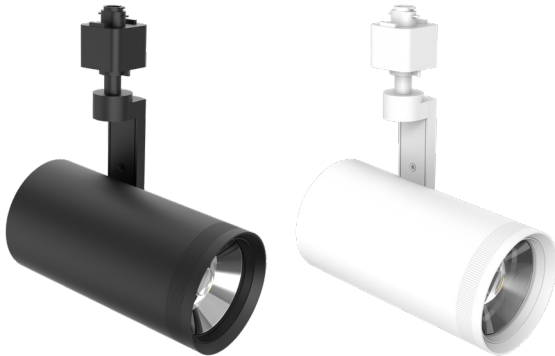
THE FUTURE IS HERE...AND IT'S QUITE BRIGHT!

Customer Name: _____

Project Name: _____

Note: _____

Type: _____



9.56" (W) x 3.23" (H) x 2.56" (D)

The Builder Series Track Heads: the ultimate versatile and efficient lighting solution designed to meet the diverse needs of modern lighting projects. With an array of adjustable features, elegant finishes, and superior performance, the Builder Series Track Heads are perfect for any space requiring high-quality, adaptable lighting.

Features

- High Light Transmittance, Anti-UV and Fire Resistant PC Lens
- 7-Year Warranty
- Die-Cast Aluminum With Powder Coat Finish
- Multi CCT and Power (Switches are on back of the fixture)

Technical Specifications

Electrical:

- Voltage: 120V AC / 50-60 Hz
- Wattage: 10W/15W/20W
- Power Factor: >0.95
- Efficacy: 90 LPW

Mechanical:

- Die-Cast Aluminum, Powder Coated Finish
- 90° vertical adjustment, 358° rotation
- Lens: Clear Tempered Glass Lens Secured To Housing By Threaded Lens Cap
- Effortlessly installed into H-Type single-circuit track
- Operating Temperature: -4°F to 104°F
- 7-Year Warranty

Lighting:

- Dimming: Triac and ELV dimmable down to 10%. Flicker-Free Dimming. For Full List Of Dimmers Refer To The Dimmer Compatibility List
- Multi CCT (Switches Are On The Driver Box)
- Total Lumens: 1800LM
- Color Temperatures: 2700K/3000K/3500K/4000K/5000K
- Color Rendering Index: CRI ≥ 90
- Beam Angle: Adjustable from 36°
- Rated Life: 70,000 Hrs

Applications:

- Retail Stores: Enhance product displays with adjustable lighting that draws attention and creates a welcoming shopping experience.
- Galleries and Museums: Showcase artwork with precision lighting that can be easily adjusted to suit different exhibits.
- Commercial Spaces: Provide flexible lighting solutions that can adapt to changing needs and layouts.

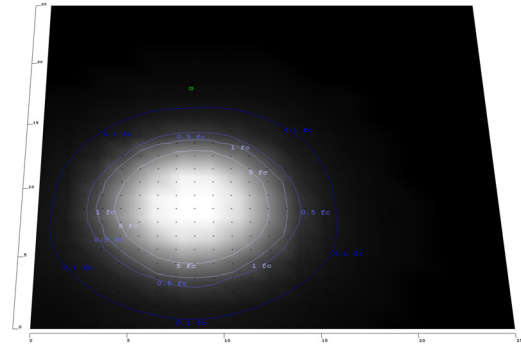
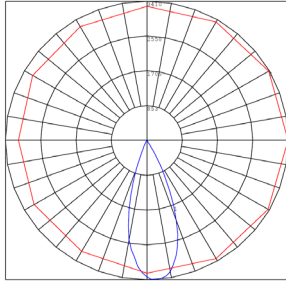


Phone: (877) 805-2252 | Fax: (877) 805-2252
www.westgatemfg.com |



WG-20241014

Photometrics: TRS-10-20W-MCTP-36D



Area 25'x 25' Mounting Height: 9'

Other Views:



Side View



Lens View



Side View



Lens View

Performance Table: TRS-10-20W-MCTP-36D

MODEL NO.	Wattage	Voltage	Lumens	Color Temp.	LPW
TRS-10-20W-MCTP-36D-WH	10W	120V	900LM	3000K	90
TRS-10-20W-MCTP-36D-BK	15W		1350LM	3500K	
	20W		1800LM	4000K	

Sample Ordering

Model Wattage. Wattage. Color Temp Beam Angle Housing

TRS - 10 - 20W - MCTP - 36D -

BK = Black
WH = White

Accessories:

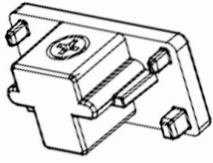
- Blank = No Option For Accessories
- TRS-H-J-WH = H-Type To J-Type Connector Head Converter, White
- TRS-H-J-BK = H-Type To J-Type Connector Head Converter, Black
- TR-2FT-BK = 2Ft 3-Wire Track, Black
- IR-2FT-WH = 2Ft 3-Wire Track, White
- IR-4FT-BK = 4Ft 3-Wire Track, Black
- TR-4FT-WH = 4Ft 3-Wire Track, White
- TR-6FT-BK = 6Ft 3-Wire Track, Black
- IR-6FT-WH = 6Ft 3-Wire Track, White
- TR-8FT-BK = 8Ft 3-Wire Track, Black
- TR-8FT-WH = 8Ft 3-Wire Track, White
- IR-LE-BK = 3-Wire Track Live End, Black
- IR-LE-WH = 3-Wire Track Live End, White
- IR-MC-BK = 3-Wire Track Mini Connector, Black
- IR-MC-WH = 3-Wire Track Mini Connector, White
- IR-SC-BK = 3-Wire Track Straight Connector, Black
- TR-SC-WH = 3-Wire Track Straight Connector, White
- TR-LC-BK = 3-Wire Track L Connector, Black
- TR-LC-WH = 3-Wire Track L Connector, White

Accessories:

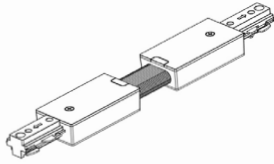
- Blank = No Option For Accessories
- TR-TC-BK = 3-Wire Track T Connector, Black
- TR-TC-WH = 3-Wire Track T Connector, White
- TR-XC-BK = 3-Wire Track X Connector, Black
- TR-XC-WH = 3-Wire Track X Connector, White
- TR-FLEXC-BK = 3-Wire Track Flex Connector, Black
- IR-FLEXC-WH = 3-Wire Track Flex Connector, White
- TR-FC-BK = 3-Wire Track Floating Canopy, Black
- TR-FC-WH = 3-Wire Track Floating Canopy, White
- TR-MONC-BK = 3-Wire Track Mono Canopy, Black
- IR-MONC-WH = 3-Wire Track Mono Canopy, White
- IR-JBEF-BK = 3-Wire Track J-Box End Feed Kit, Black
- TR-JBEF-WH = 3-Wire Track J-Box End Feed Kit, White
- TR-CCON-BK = 3-Wire Track Conduit Connector, Black
- TR-CCON-WH = 3-Wire Track Conduit Connector, White
- TR-EC-BK = 3-Wire Track End Cap, Black
- TR-EC-WH = 3-Wire Track End Cap, White
- TR-EXTCON-BK = 3-Wire Track To Track Extension Connector, Black
- TR-EXTCON-WH = 3-Wire Track To Track Extension Connector, White



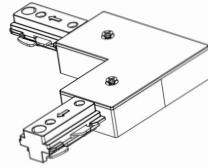
Accessories:



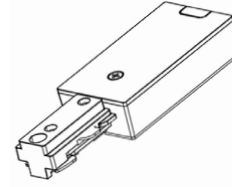
End Cap
TR-EC-BK
TR-EC-WH



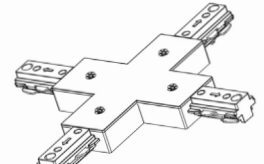
Flexible Connector
TR-FLEXC-BK
TR-FLEXC-WH



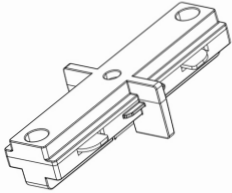
L Connector
TR-LC-BK
TR-LC-WH



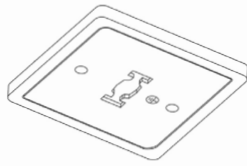
Live End Connector
TR-LE-BK
TR-LE-WH



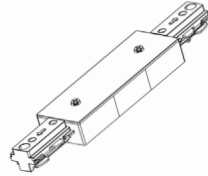
X Connector
TR-XC-BK
TR-XC-WH



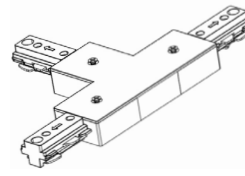
Mini Joiner
TR-MC-BK
TR-MC-WH



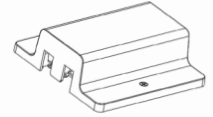
Monopoint Canopy
TR-MONC-BK
TR-MONC-WH



Straight Connector
TR-SC-BK
TR-SC-WH



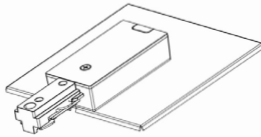
T Connector
TR-TC-BK
TR-TC-WH



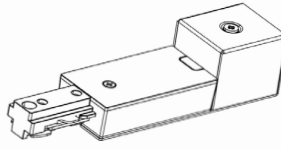
Track Floating
TR-FC-BK
TR-FC-WH



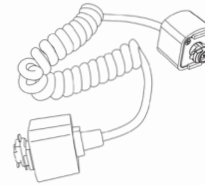
Track
TR-2FT-BK
TR-2FT-WH
TR-4FT-BK
TR-4FT-WH
TR-6FT-BK
TR-6FT-WH
TR-8FT-BK
TR-8FT-WH



3-WIRE Track J-BOX
Eed Feed Kit
TR-JBEF-BK
TR-JBEF-WH



Live End Connector
with Box
TR-CCON-BK
TR-CCON-WH



Track to Track Extension
Connector
TR-EXTCON-BK
TR-EXTCON-WH

