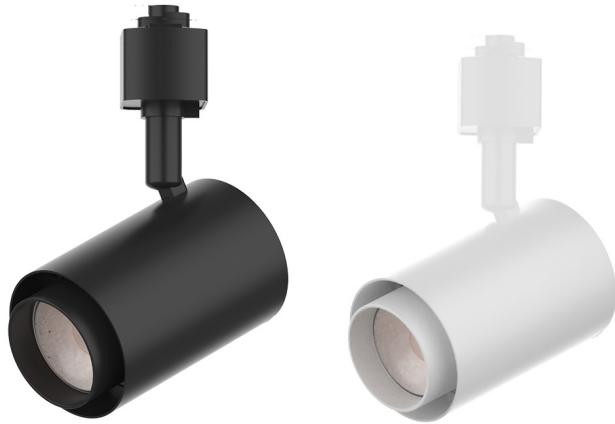


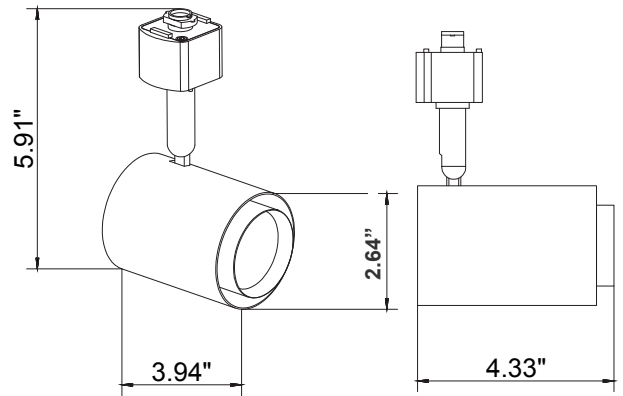
# TRD SERIES Commercial Lighting

TRD-15W-MCT5-36D-BK  
TRD-15W-MCT5-36D-WH  
SPEC SERIES DIE-CAST TRACK HEADS 5CCT + TRACKS AND ACCESSORIES  
**MCT5** Multi Color Temperature (Selectable)

Customer Name: \_\_\_\_\_  
Project Name: \_\_\_\_\_  
Note: \_\_\_\_\_ | Type: \_\_\_\_\_



the Builder Series Track Heads – the ultimate versatile and efficient lighting solution designed to meet the diverse needs of modern lighting projects. With an array of adjustable features, elegant finishes, and superior performance, the Builder Series Track Heads are perfect for any space requiring high-quality, adaptable lighting.



4.33" (W) x 5.91" (H) x 3.94" (D)

## Features

- High Light Transmittance, Anti-UV and Fire Resistant PC Lens
- 7-Year Warranty
- Die-Cast Aluminum With Powder Coat Finish
- Multi CCT (Switches Are On The Driver Box)

## Technical Specifications

### Electrical:

- Voltage: 120VAC 60Hz
- Wattage: 15W
- Power Factor: >0.95
- Efficacy: 90 LPW

### Mechanical:

- Die-Cast Aluminum, Powder Coated Finish
- 90° vertical adjustment, 358° rotation
- Lens: Clear Tempered Glass Lens Secured To Housing By Threaded Lens Cap
- Effortlessly installed into H-Type single-circuit track
- Maximum Weight for Each 2FT Track is 9 Lbs.
- Maximum Load For Each 2FT Track:
  - 15 Amp Circuit: 1800 Watts
  - 20 Amp Circuit: 2400 Watts
- Operating Temperature: -4°F to 104°F
- 7-Year Warranty

### Lighting:

- Multi CCT (Switches Are On The Driver Box)
- Total Lumens: 1350LM
- Color Temperatures: 2700K/3000K/3500K/4000K/5000K
- Color Rendering Index: CRI ≥ 80
- Beam Angle: 36°
- Rated Life: 70,000 Hrs

### Applications:

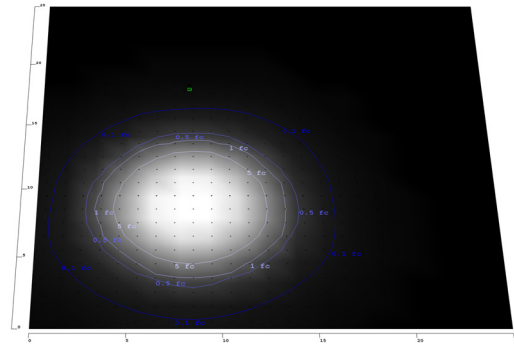
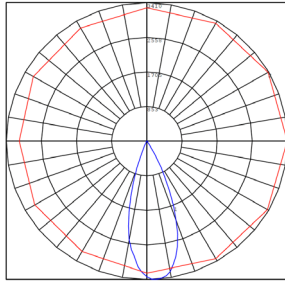
- Retail Stores: Enhance product displays with adjustable lighting that draws attention and creates a welcoming shopping experience.
- Galleries and Museums: Showcase artwork with precision lighting that can be easily adjusted to suit different exhibits.
- Commercial Spaces: Provide flexible lighting solutions that can adapt to changing needs and layouts.

### Other Models:

- 8W | 720LM | TRD-8W-MCT5-36D-BK
- 8W | 720LM | TRD-8W-MCT5-36D-WH
- 20W | 1800LM | TRD-20W-MCT5-36D-BK
- 20W | 1800LM | TRD-20W-MCT5-36D-WH
- 30W | 2700LM | TRD-30W-MCT5-36D-BK
- 30W | 2700LM | TRD-30W-MCT5-36D-WH



**Photometrics:** TRD-15W-MCT5-36D



Area 25'x 25' Mounting Height: 9'

**Other views:** TRD-12W-MCT5-36D-BK



Side View



Back View



Switch View



Side View



Back View



Switch View

**Performance Table:** TRD-15W-MCT5-36D

MODEL NO.	Wattage	Voltage	Lumens	Color Temp.	LPW
TRD-15W-MCT5-36D-BK TRD-15W-MCT5-36D-WH	15W	120V	1350LM	2700K 3000K 3500K 4000K 5000K	90

**Sample Ordering**

**Model Wattage.Color TempBeam Angle Housing**

TRD - 15W - MCT5 - 36D -

BK = BLACK  
WH = WHITE

**Accessories:**

- Blank = No Option For Accessories
- TR-2FT-BK = 2Ft 3-Wire Track, Black
- TR-2FT-WH = 2Ft 3-Wire Track, White
- TR-4FT-BK = 4Ft 3-Wire Track, Black
- TR-4FT-WH = 4Ft 3-Wire Track, White
- TR-6FT-BK = 6Ft 3-Wire Track, Black
- TR-6FT-WH = 6Ft 3-Wire Track, White
- TR-8FT-BK = 8Ft 3-Wire Track, Black
- TR-8FT-WH = 8Ft 3-Wire Track, White
- TR-LE-BK = 3-Wire Track Live End, Black
- TR-LE-WH = 3-Wire Track Live End, White
- TR-MC-BK = 3-Wire Track Mini Connector, Black
- TR-MC-WH = 3-Wire Track Mini Connector, White
- TR-SC-BK = 3-Wire Track Straight Connector, Black
- TR-SC-WH = 3-Wire Track Straight Connector, White
- TR-LC-BK = 3-Wire Track L Connector, Black
- TR-LC-WH = 3-Wire Track L Connector, White

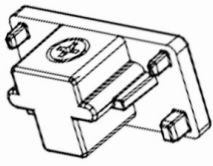
- TR-TC-BK = 3-Wire Track T Connector, Black
- TR-TC-WH = 3-Wire Track T Connector, White
- TR-XC-BK = 3-Wire Track X Connector, Black
- TR-XC-WH = 3-Wire Track X Connector, White
- TR-FLEXC-BK = 3-Wire Track Flex Connector, Black
- TR-FLEXC-WH = 3-Wire Track Flex Connector, White
- TR-FC-BK = 3-Wire Track Floating Canopy, Black
- TR-FC-WH = 3-Wire Track Floating Canopy, White
- TR-MONC-BK = 3-Wire Track Mono Canopy, Black
- TR-MONC-WH = 3-Wire Track Mono Canopy, White
- TR-JBEF-BK = 3-Wire Track J-Box End Feed Kit, Black
- TR-JBEF-WH = 3-Wire Track J-Box End Feed Kit, White
- TR-CCON-BK = 3-Wire Track Conduit Connector, Black
- TR-CCON-WH = 3-Wire Track Conduit Connector, White
- TR-EC-BK = 3-Wire Track End Cap, Black
- TR-EC-WH = 3-Wire Track End Cap, White
- TR-EXTCON-BK = 3-Wire Track To Track Extension Connector, Black
- TR-EXTCON-WH = 3-Wire Track To Track Extension Connector, White
- TR-PENDKIT-BK = 3-Wire Track 3Ft Pendant Wiring Kit, Black
- TR-PENDKIT-WH = 3-Wire Track 3Ft Pendant Wiring Kit, White

**Beam Lens Accessories:**

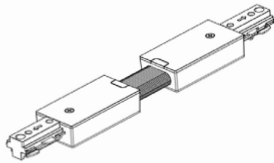
- TRD-12W-LENS-15D = TRD Replacement Lens 15 Degree
- TRD-12W-LENS-25D = TRD Replacement Lens 25 Degree
- TRD-12W-LENS-55D = TRD Replacement Lens 55 Degree



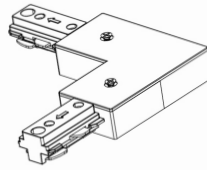
**Accessories:** TRD-15W-MCT5-36D



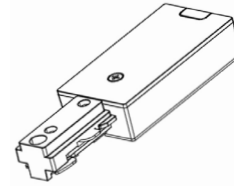
End Cap  
TR-EC-BK  
TR-EC-WH



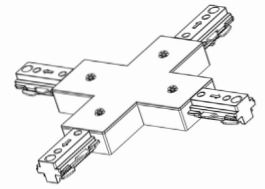
Flexible Connector  
TR-FLEXC-BK



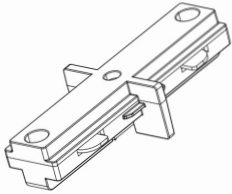
L Connector  
TR-LC-BK  
TR-LC-WH



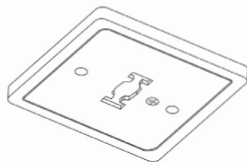
Live End Connector  
TR-LE-BK  
TR-LE-WH



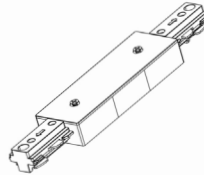
X Connector  
TR-XC-BK  
TR-XC-WH



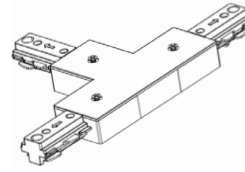
Mini Joiner  
TR-MC-BK  
TR-MC-WH



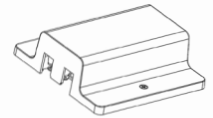
Monopoint Canopy  
TR-MONC-BK  
TR-MONC-WH



Straight Connector  
TR-SC-BK  
TR-SC-WH



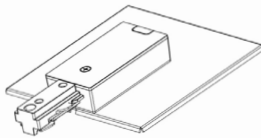
T Connector  
TR-TC-BK  
TR-TC-WH



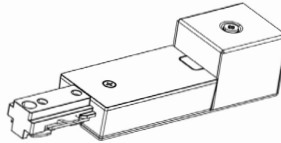
Track Floating  
TR-FC-BK  
TR-FC-WH



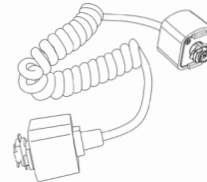
Track  
TR-2FT-BK  
TR-2FT-WH  
TR-4FT-BK  
TR-4FT-WH  
TR-6FT-BK  
TR-6FT-WH  
TR-8FT-BK  
TR-8FT-WH



3-WIRE Track J-BOX  
Eed Feed Kit  
TR-JBEF-BK  
TR-JBEF-WH



Live End Connector  
with Box  
TR-CCON-BK  
TR-CCON-WH



Track to Track  
Extension  
Connector  
Extends 16" to 48"  
TR-EXTCON-BK  
TR-EXTCON-WH

**Compatible Dimmer List:**

MODEL NO.	BRAND	MODEL NO.	BRAND
DVCL-153P	DIVA	DVELV-300P	DIVA
IP106	LEVITON	TGCL-153P	Toggler
IP1160	LEVITON	6633-P	LEVITON
S-600	SKYL^RK	6613-P	LEVITON
MS-OP600G	MAESTRO	MS-OP600G	SKYL^RK
MLV-600	COOPER	CTCL-153P	COOPER

