

TGL-2X4-RGB-RC-BT

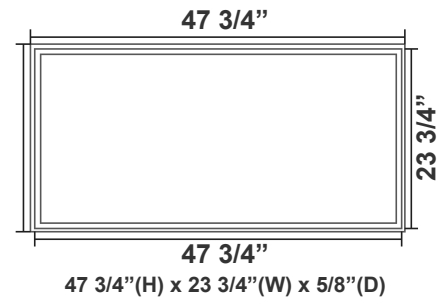
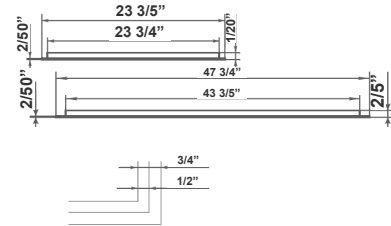
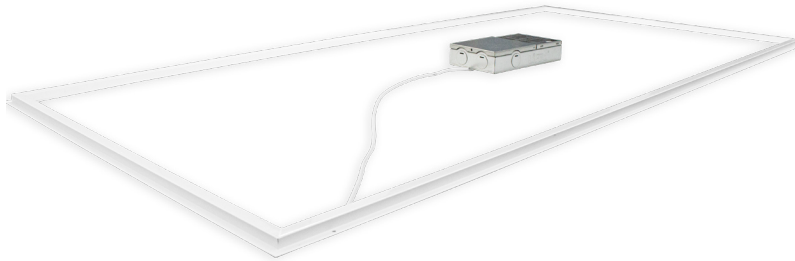
Multi Color Temperature & Multi Power/Wattage (Selectable)
MCTP Multi Color Temperature (Selectable)

Customer Name: _____

Project Name: _____

Note: _____

Type: _____



The LED Frame Light luminaire is a new design that creates innovative and outstanding lighting performance available to replace the 2x2 LED panel. It has a modern design and is easy to install. Ideal for new construction and remodel/replacement of fluorescent troffers or LED panels in commercial office spaces, schools, healthcare facilities, and retail merchandising areas. Compact ultra-thin appearance, simple installation, and outstanding performance. Assembling type in an individual package, easy to take away.

Features

- White Finish
- Multi Color Temperature & Multi Power (Selectable Switch in Driver box)
- 5-Year Warranty
- High Quality LED Chips Provide High Efficiency, Heat Dissipation, Stability, and Lumen Maintenance

Technical Specifications

Electrical:

- Voltage: 120-277V
- Power Factor: >0.92
- Wattage: 60W
- Efficacy: 100LPW

Mechanical:

- Extruded Aluminum with White Painting
- Surge Protector
- Maximum Ambient Temperature: -22°F to +104°F
- RGBW color control with adjustable speed, multiple lighting modes, and full dimming via included remote control
- Driver/Junction Box is Separate and Connects to the Fixture with a 3Ft. Dongle.
- Driver/Junction Box Installs On Adjacent Grid, On Top, Using Your Choice Of T-bar Bracket or Westgate T-bar Bracket Model (ELB-TBAR1)
- IP20 indoor use only
- 5-Year Warranty

Lighting:

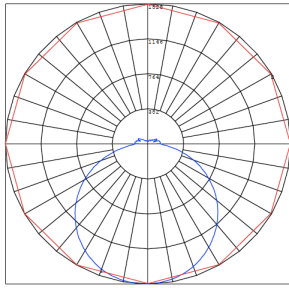
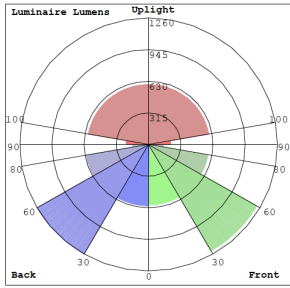
- Performance Lens Assembly Delivers Unique Beam Angles and Reduces Glare
- Dimmable: 120-277V 0~10V Driver for Continuous Dimming
- Driver Disconnect Provided Where Required to Comply with US and Canadian codes
- Color Temperatures: RGB
- Color Rendering Index: CRI ≥ 80
- Rated life: 50,000 hrs

Applications:

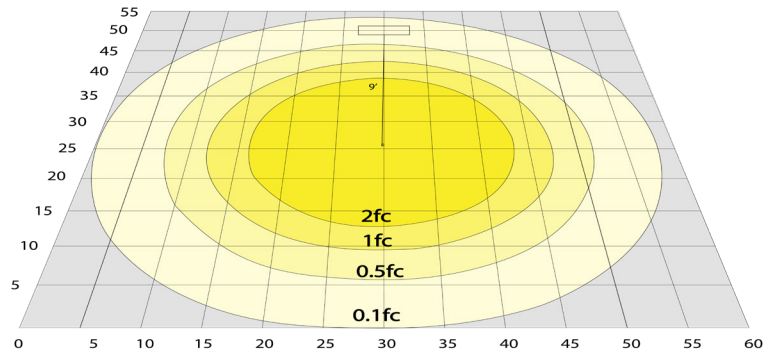
- Retail, Schools, Offices, Healthcare, Conference rooms, Hospitality, Corridors, Reception areas, Foyer Library



Photometrics: TGL-2X4-RGB-RC-BT



BUG Rating: B2-U4-G2



Area 55'x 60' Mounting Height: 9'

Other Views:



Side View



Front View



Back View



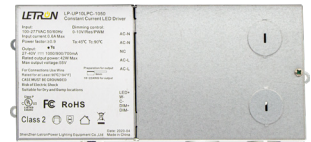
Driver



Side View



Front View



Back View

Performance Table: TGL-2X4-RGB-RC-BT

MODEL NO.	Wattage	Lumens	LPW	Color Temp.	Voltage	BUG Rating
TGL-2X4-RGB-RC-BT	60W	6000LM	100	RGB	120-277V	B2-U4-G2

Sample Ordering

Model Size CCT & Power Remote Bluetooth

TGL - 2X4 - RGB - RC - BT

Factory-Installed Option:



Blank = No Option For Accessories

OPT-EM-TGL = Installed on a T-Bar Bracket to Clip on Top the T-Bar Grid

TBAR1EM = Driver

OPT-FWH-63 = 6FT 3-Wire Whip

OPT-FWH-65 = 6FT 5-Wire Whip

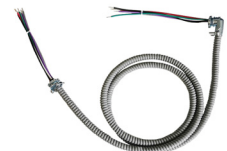
OPT-FWH-66 = 6FT 6-Wire Whip

FACTORY-INSTALLED OPTION:



OPT-EM-TGL

Installed on a T-Bar Bracket to Clip on Top the T-Bar Grid



OPT-FWH-63

OPT-FWH-65

OPT-FWH-66

6FT 3/5/6 Wire Whip

