

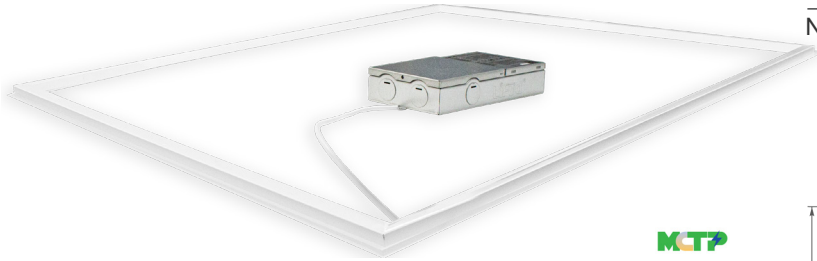
TGL-2X2-MCTP

Customer Name: _____

Project Name: _____

Note: _____

Type: _____

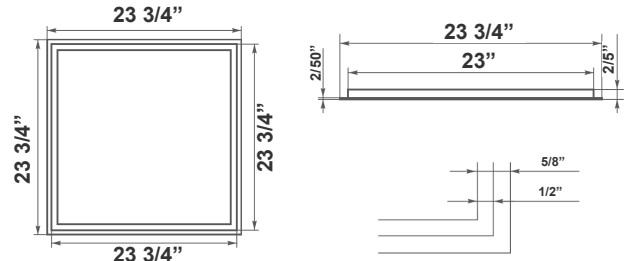


MCTP

Selection:



The LED Frame Light luminaire is a new design that creates innovative and outstanding lighting performance available to replace the 2x2 LED panel. It has a modern design and is easy to install. Ideal for new construction and remodel/replacement of fluorescent troffers or LED panels in commercial office spaces, schools, healthcare facilities, and retail merchandising areas. Compact ultra-thin appearance, simple installation, and outstanding performance. Assembling type in an individual package, easy to take away.



23 3/4"(H) x 23 3/4"(W) x 5/8"(D)

Features

- White Finish
- Multi Color Temperature & Multi Power (Selectable Switch in Driver box)
- 5-Year Warranty
- High Quality LED Chips Provide High Efficiency, Heat Dissipation, Stability, and Lumen Maintenance

Technical Specifications

Electrical:

- Voltage: 120-277V
- Power Factor: >0.92
- Wattage: 27W/35W/40W
- Efficacy: 150 LPW

Mechanical:

- Extruded Aluminum with White Painting
- Surge Protector
- Maximum Ambient Temperature: -22°F to +104°F
- Rated life: 50,000 hrs
- Driver/Junction Box is Separate and Connects to the Fixture with a 3Ft. Dongle.
- Driver/Junction Box Installs On Adjacent Grid, On Top, Using Your Choice Of T-bar Bracket or Westgate T-bar Bracket Model (ELB-TBAR1)
- IP20 Indoor Use Only

Lighting:

- Performance Lens Assembly Delivers Unique Beam Angles and Reduces Glare
- Dimmable: 120-277V 0~10V Driver for Continuous Dimming
- Driver Disconnect Provided Where Required to Comply with US and Canadian codes
- Color Temperatures: 3500K/4000K/5000K
- Multi CCT & Multi Power (Selectable Switch in Driver Box)
- Color Rendering Index: CRI ≥ 80

Applications:

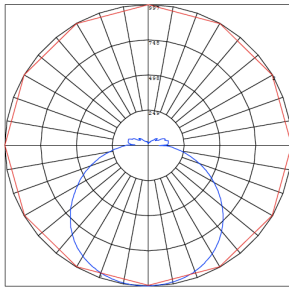
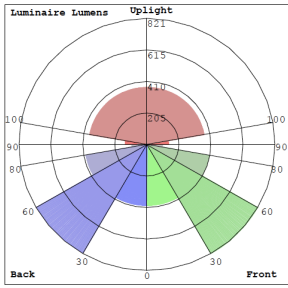
- Retail, Schools, Offices, Healthcare, Conference rooms, Hospitality, Corridors, Reception areas, Foyer Library

Other Models:

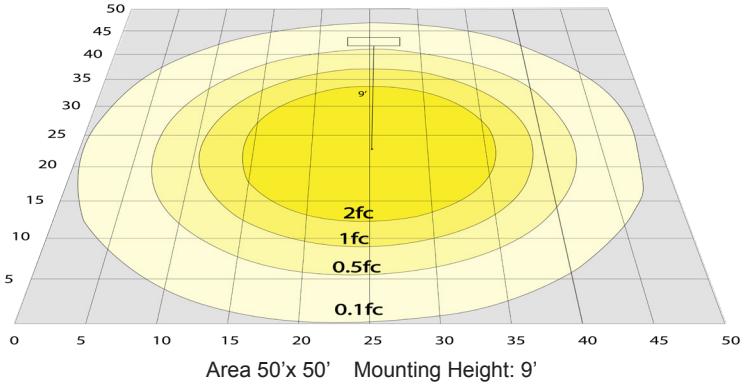
- 54W | 5250LM | TGL-2X4-MCTP



Photometrics: TGL-2X2-MCTP



BUG Rating: B1-U3-G1

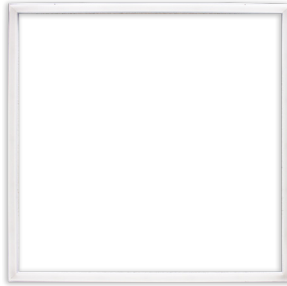


Area 50'x 50' Mounting Height: 9'

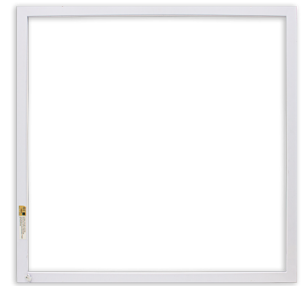
Other Views:



Side View



Front View



Back View



Driver



Side View



Front View



Back View

Performance Table: TGL-2X2-MCTP

MODEL NO.	Wattage	Lumens	LPW	Color Temp.	Voltage	BUG Rating
TGL-2X2-MCTP	27W	4050LM	150	3500K/ 4000K/ 5000K	120-277V	B1-U3-G1
	35W	5250LM				
	40W	6000LM				

Sample Ordering

Model Size CCT & Power

TGL - 2X2 - MCTP

Factory-Installed Option:

Blank = No Option For Accessories

OPT-EM-TGL = Installed on a T-Bar Bracket to Clip on Top the T-Bar Grid

TBAR1EM = Driver

OPT-FWH-63 = 6FT 3-Wire Whip

OPT-FWH-65 = 6FT 5-Wire Whip

OPT-FWH-66 = 6FT 6-Wire Whip

Example:

1. TGL-2X2-MCTP (FOR TGL 40W MCTP FIXTURE 120-277V)

2. TGL-2X2-MCTP (FOR TGL 40W MCTP FIXTURE 120-277V)
OPT-EM-TGL (External Emergency Battery)

FACTORY-INSTALLED OPTION:



OPT-EM-TGL
Installed on a T-Bar Bracket
to Clip on Top the T-Bar Grid



OPT-FWH-63
OPT-FWH-65
OPT-FWH-66
6FT 3/5/6 Wire Whip

