

T8 SERIES

COMMERCIAL INDOOR LIGHTING

WESTGATE
THE FUTURE IS HERE...AND IT'S QUITE BRIGHT!

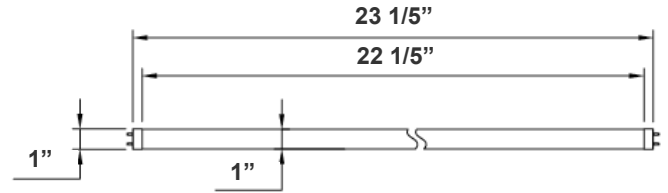
T8-EZ6-GS-2FT-10W-30K-F
T8-EZ6-GS-2FT-10W-35K-F
T8-EZ6-GS-2FT-10W-40K-F
T8-EZ6-GS-2FT-10W-50K-F

Customer Name: _____

Project Name: _____

Note: _____

Type: _____



23 1/5"(L) X 1" (D)

Crystal Glass T8 Tube switches from fluorescent tubes to LED, giving more cost efficiency by providing the same amount of lumen output with less energy consumption. The LED tube offers a soft and bright light distribution.

Features

- Type A + B (Dual UL)
- Type A: With Existing Ballast - UL No. E366061
- Type B: Ballast Override (AC Direct), Connect One End or Both Ends (Dual Function) - UL No. E342884
- 5-Year Warranty
- Glass Lens

Technical Specifications

Electrical:

- Voltage: 120-277V; 50/60Hz AC
- Power Factor: >0.90
- THD: <20%
- Wattage: 10W
- Efficacy: 120 LPW

Lighting:

- Dimming: Non Dimmable
- Total Lumens: 1200LM
- Color Temperatures: 3000K/3500K/4000K/5000K
- Color Rendering Index: CRI ≥ 80
- Beam Angle: 120°
- Rated life: 50,000 hrs

Mechanical:

- Base Type: G13
- Glass Tube: Frosted
- Ambient Operating Temperature: -13°F to 113°F
- Rated life: 50,000 hrs
- IP Rating: IP20 (Indoor)

Applications:

- Direct Fit 4 T8 LED tubes do not burn out easily and provide bright and even lighting to schools, office spaces, retail stores and storage rooms.

Other Models:

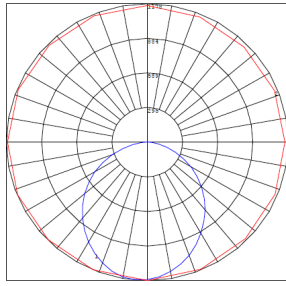
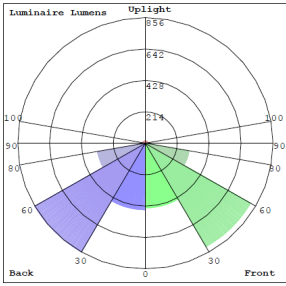
- 10W | 1200LM | T8-EZ6-GS-2FT-10W-30K-C
- 10W | 1200LM | T8-EZ6-GS-2FT-10W-35K-C
- 10W | 1200LM | T8-EZ6-GS-2FT-10W-40K-C
- 10W | 1200LM | T8-EZ6-GS-2FT-10W-50K-C



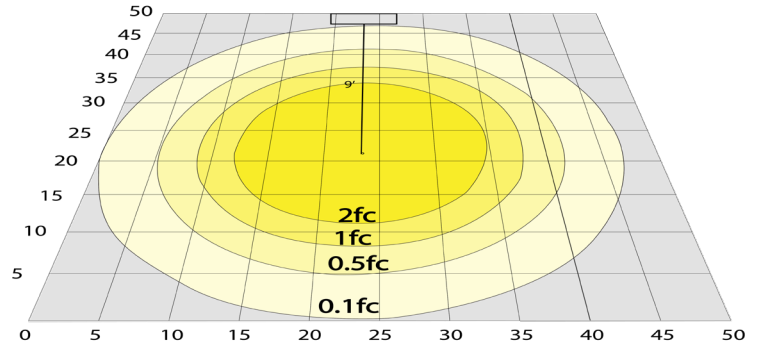
Phone: (877) 805-2252 | Fax: (877) 805-2252
www.westgatemfg.com | www.westgatecontrols.co



Photometrics: T8-EZ6-GS-2FT-10W

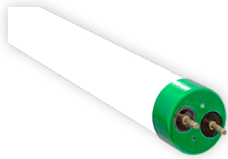


BUG Rating: B1-U2-G1

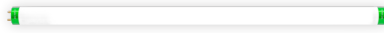


Area 50'x 50' Mounting Height: 9'

Other Views:



Close-up View



Front View



Socket View

Performance Table: T8-EZ6-GS-2FT-10W

MODEL NO.	Wattage	Voltage	Lumens	Color Temp.	BUG Rating	LPW
T8-EZ6-GS-2FT-10W-30K-F	10W	120-277V	1200LM	3000K	B1-U2-G1	120
T8-EZ6-GS-2FT-10W-35K-F	10W	120-277V	1200LM	3500K	B1-U2-G1	120
T8-EZ6-GS-2FT-10W-40K-F	10W	120-277V	1200LM	4000K	B1-U2-G1	120
T8-EZ6-GS-2FT-10W-50K-F	10W	120-277V	1200LM	5000K	B1-U2-G1	120

Sample Ordering

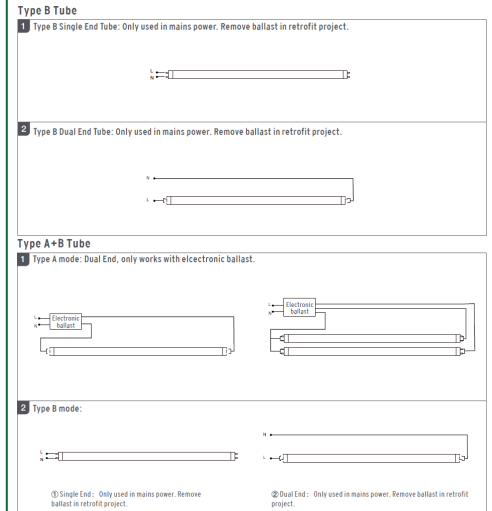
Model	Material	Size	Watt	Color Temp.	Lens Type							
T8	-	EZ6	-	GS	-	2FT	-	10W	-		-	F

30K = 3000K
 35K = 3500K
 40K = 4000K
 50K = 5000K

Example:

1. T8-EZ6-GS-2FT-10W-30K-F (FOR 10W 3000K T8 2FT TUBE LAMP 120-277V)

WIRING DIAGRAM:



Other Models: T8-EZ6-GS-2FT-10W-C (Clear Lens)



Close-up View



Front View



Socket View