

T8 SERIES COMMERCIAL INDOOR LIGHTING

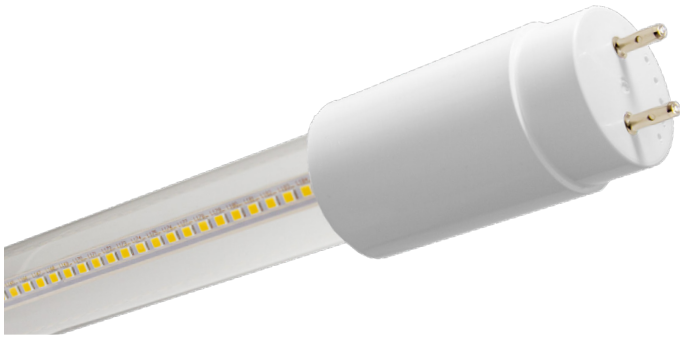
T8-4FT-TYPB-10.5WHL-40K-C

Customer Name: _____

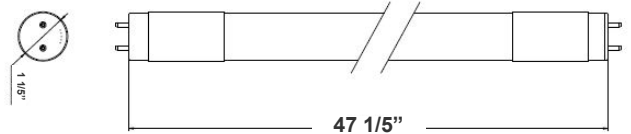
Project Name: _____

Note: _____

Type: _____



Glass tube provides better transparency and thermal conductivity than plastic ideal for offices, showrooms, refrigerators, cove lighting



47 1/5"(L)

Features

- Type B, AC Direct (Ballast Override)
- Connect One End or Both Ends (Dual Function)
- High Lumens
- 5-Year Warranty
- Glass Lens

Technical Specifications

Electrical:

- Wattage: 10.5W
- Voltage: 120-277V; 50/60Hz AC
- Power Factor: >0.90
- THD: <20%
- Efficacy: 162 LPW

Mechanical:

- Base Type: G13
- Glass tube: better transparency and thermal conductivity than plastic
- Frosted (Shatter-Proof Film)
- Ambient Operating Temperature: -13°F to 113°F
- Rated life: 50,000 hrs
- IP Rating: IP20 (Indoor)

Lighting:

- Dimming: Non Dimmable
- Total Lumens: 1700LM
- Color Temperatures: 4000K
- Color Rendering Index: CRI ≥ 80
- Beam Angle: 100°

Applications:

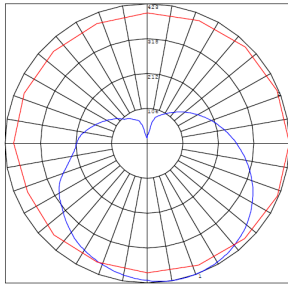
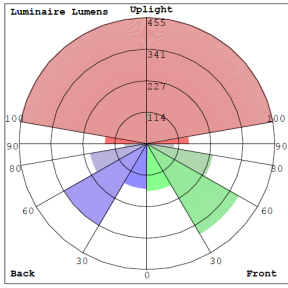
- Glass tube provides better transparency and thermal conductivity than plastic ideal for offices, showrooms, refrigerators, cove lighting

Other Models:

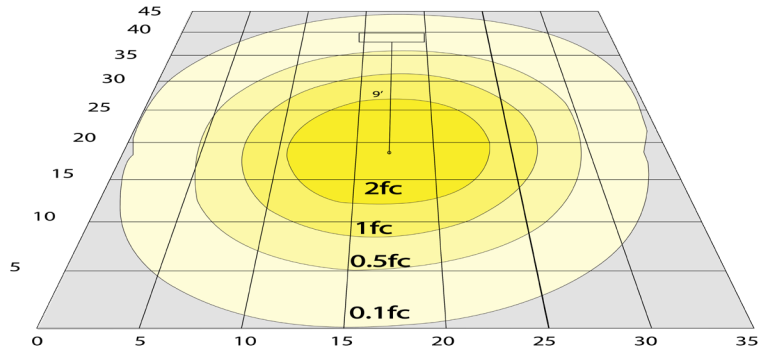
- 10.5W | 1700LM | T8-4FT-TYPB-10.5WHL-40K-F



Photometrics: T8-4FT-TYPB-10.5WHL-40K-C



BUG Rating: B1-U3-G1

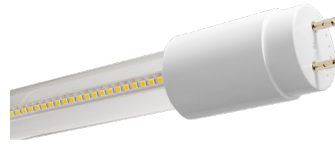


Simulation based on 5000K, Area 45'x 35' Mounting Height: 9'

Other Views:



Close-up View



End View



Socket View

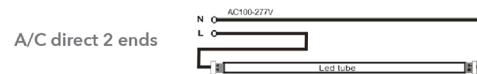
Performance Table: T8-4FT-TYPB-10.5WHL-40K-C

MODEL NO.	Wattage	Voltage	Lumens	Color Temp.	BUG Rating	LPW
T8-4FT-TYPB-10.5WHL-40K-C	10.5W	120-277V	1700LM	4000K	B1-U3-G1	162

Sample Ordering

Model	Size	Type	Watt	Color Temp.	Lens Type
T8	4FT	TYPB	10.5WHL	40K	C

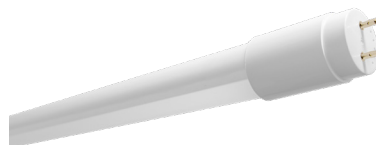
WIRING DIAGRAM:



Other Models: T8-4FT-TYPB-10.5WHL-40K-F (Clear Glass)



Close-up View



End View



Socket View