

STL4 SERIES OUTDOOR LIGHTING

STL4-50-150W-30K
STL4-50-150W-40K
STL4-50-150W-50K

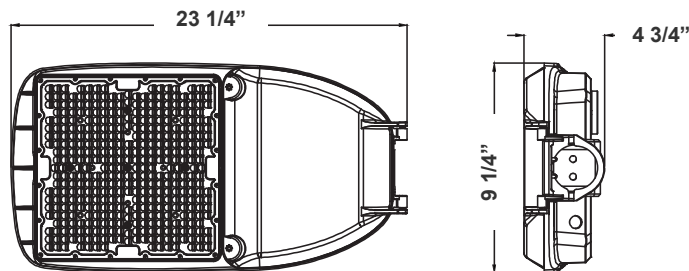
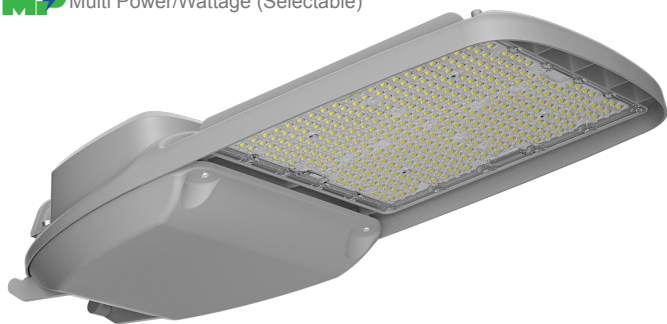
MP Multi Power/Wattage (Selectable)

Customer Name: _____

Project Name: _____

Note: _____

Type: _____



This outdoor lighting is ideal for general site lighting, street, roadway, alleys, loading docks, doorway, pathway, and parking areas

9 1/4"(H) x 23 1/4"(W) x 4 3/4"(D)

Features

- Light Grey Finish
- With NEMA twist-lock Photocell Socket (Shorting Cap included)
- 7-Year Warranty
- Outdoor Light

Technical Specifications

Electrical:

- Voltage: 120-277V; 60Hz AC
- Power Factor: >0.95
- Wattage: 50W/80W/100W/150W
- Efficacy: 140LM/W

Mechanical:

- Die-cast Aluminum with Powder Coat Finish (Light Grey)
- 10KV Lightning Surge Protection
- Cord Type: 40" SJTW 18/3 AWG Cable
- With 2-15/16" Diameter Pole Entry with Adapter Bracket Inside for Smaller Pole Diameters
- Maximum Ambient Temperature: 104°F
- IP Rating: IP65, Suitable For Wet Location
- 7-Year Warranty
- Country of Origin: China

Lighting:

- MP: Multi-Power Switch Is Located On The Back Of The Fixture
- Lens Type: Optical TYPE III Lens, High Light Transmittance PC, Anti-UV and Flame Resistant
- Dimming: 0-10 Dimming
- Driver Located in Isolated Compartment for Improved Thermal Management
- Total Lumens: 21000LM Max.
- Color Temperatures: 3000K/4000K/5000K
- Color Rendering Index: CRI ≥ 70
- Rated Life: 70,000 hrs

Applications:

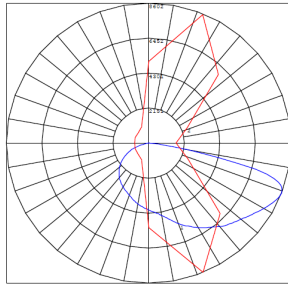
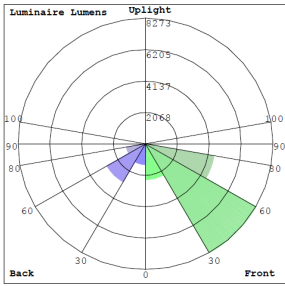
- Ideal for general site lighting, street, roadway, alleys, loading docks, doorway, pathway and parking areas

Other Models:

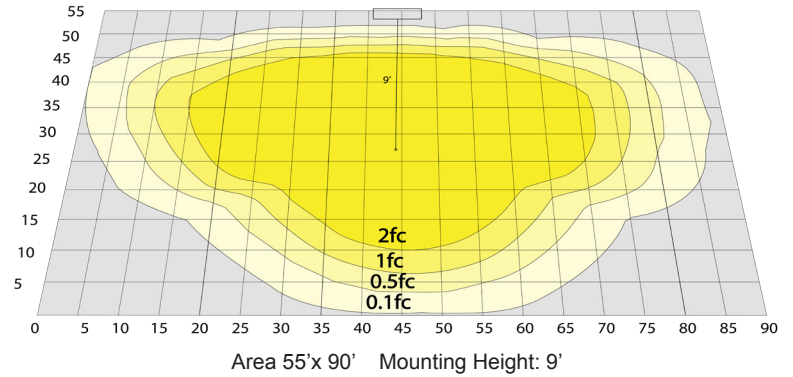
- 50W | 7250LM | STL4-15-50W-30K
- 50W | 7250LM | STL4-15-50W-40K
- 50W | 7250LM | STL4-15-50W-50K
- 100W | 14500LM | STL4-30-100W-30K
- 100W | 14500LM | STL4-30-100W-40K
- 100W | 14500LM | STL4-30-100W-50K



Photometrics: STL4-50-150W



BUG Rating: B3-U0-G3



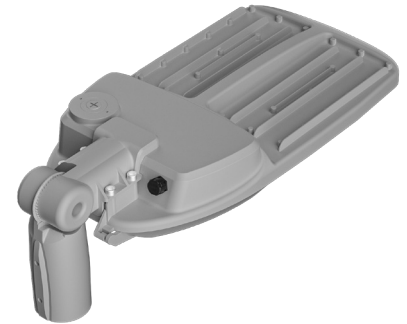
Other Views:



Side View
(Shown With Slip Fitter)



Front View
(Shown With Slip Fitter)



Back View
(Shown With Slip Fitter)

Performance Table: STL4-50-150W

MODEL NO.	Wattage	Voltage	Lumens	Color Temp.	BUG Rating	LPW
STL4-50-150W-30K	50W	120-277V	7000LM	3000K	B3-U0-G3	140
STL4-50-150W-40K	80W		1120LM	4000K		
STL4-50-150W-50K	100W		14000LM	5000K		
	150W		21000LM			

Sample Ordering

Model Min. Watt Max. Watt Color Temp.

STL4 - 50 - 150W -

30K = 3000K
40K = 4000K
50K = 5000K

Accessories:

Blank = No Option For Accessories
PC-TWIST = 1800W TUNGSTEN TWIST LOCK PHOTOCELL
STL4-SF = SLIP FITTER FOR POLES UP TO 2-3/4" O.D

Factory-Installed Options

Blank = No Option
OPT-STL-SH-CW = Half shroud option
OPT-STL-SH-FG = Full glare shroud option

ACCESSORIES:



PC-TWIST
1800W TUNGSTEN TWIST LOCK
PHOTOCELL



STL4-SF
SLIP FITTER FOR POLES UP TO
2-3/4" O.D

FACTORY-INSTALLED OPTION:



OPT-STL-SH-CW
HALF SHROUD OPTION



OPT-STL-SH-FG
FULL-GLARE SHROUD OPTION



COLOR CHART: * Choose from one of our Premium Colors with no set-up fee.

Gloss:



SILVER METALLIC
70 GLOSS
T357-GR105



SILVER METALLIC
30 GLOSS
T353-GR06



DARK RED 90
GLOSS
P009-RD02



INTERNATIONAL
ORANGE 90
GLOSS
T009-OG26



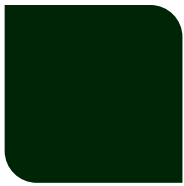
SAFETY ORANGE
90 GLOSS
T009-OG01



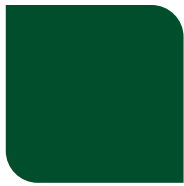
YELLOW 90
GLOSS
T009-YL14



YELLOW 90
GLOSS
T009-YL01



TRAFFIC GREEN
70 GLOSS
T007-GN16



GREEN 70 GLOSS
T007-GN13



GREEN 60 GLOSS
C006-GN03



BLUE 90 GLOSS
T009-BL01



DARK BLUE 80
GLOSS
T008-BL20



RAL 8028 TERRA
BROWN 90 GLOSS
C209-BR358

Hammer:



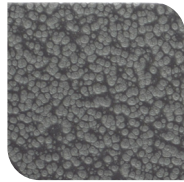
WHITE HAMMER
T013-WH09



BEIGE HAMMER
T013-BG38



GREY HAMMER
C013-GR08



SILVER
HAMMERTONE
T064-GR05



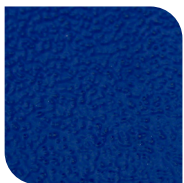
BLACK HAMMER
T013-BK62



RED HAMMER
T013-RD15



GREEN HAMMER
T013-GN220



BLUE HAMMER
T013-BL468



BRONZE HAMMER
T012-BR161

Texture:



WHITE TEXTURE
C031-WH120



FLINT GRAY
TEXTURE
T243-GR522



BLACK TEXTURE
C241-BK109



RED TEXTURE
T241-RD129



BLUE TEXTURE
C241-BL544

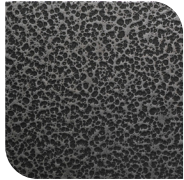


OIL RUBBED
BRONZE TEXTURE
T291-BR251

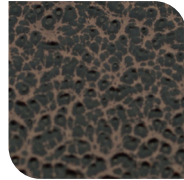
Vein:



BLACK/WHITE
VEIN
T075-WH34



SILVER VEIN
T375-BK26



COPPER VEIN
EXTERIOR
T075-BK211



GOLD VEIN
T375-BK10



COPPER VEIN
T375-BK07

