

# STL4 SERIES OUTDOOR LIGHTING

STL4-30-100W-30K  
STL4-30-100W-40K  
STL4-30-100W-50K

**MP** Multi Power/Wattage (Selectable)

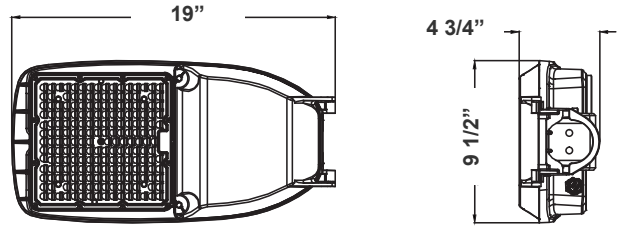


Customer Name: \_\_\_\_\_

Project Name: \_\_\_\_\_

Note: \_\_\_\_\_

Type: \_\_\_\_\_



This outdoor lighting is ideal for general site lighting, street, roadway, alleys, loading docks, doorway, pathway, and parking areas

9 1/2"(H) x 19"(W) x 4 3/4"(D)

## Features

- Light Grey Finish
- With NEMA twist-lock Photocell Socket (Shorting Cap included)
- 7-Year Warranty
- Outdoor Light

## Technical Specifications

### Electrical:

- Voltage: 120-277V; 60Hz AC
- Power Factor: >0.95
- Wattage: 30W/50W/80W/100W
- Efficacy: 145LM/W

### Mechanical:

- Die-cast Aluminum with Powder Coat Finish (Light Grey)
- Cord Type: 40" SJTW 18/3 AWG Cable
- 10KV Lightning Surge Protection
- With 2-15/16" Diameter Pole Entry with Adapter Bracket Inside for Smaller Pole Diameters
- Maximum Ambient Temperature: 104°F
- IP Rating: IP65, Suitable For Wet Location
- 7-Year Warranty
- Country of Origin: China

### Lighting:

- MP: Multi-Power Switch Is Located On The Back Of The Fixture
- Lens Type: Optical TYPE III Lens, High Light Transmittance PC, Anti-UV and Flame Resistant
- Dimming: 0-10 Dimming
- Driver Located in Isolated Compartment for Improved Thermal Management
- Total Lumens: 14500LM Max.
- Color Temperatures: 3000K/4000K/5000K
- Color Rendering Index: CRI ≥ 70
- Rated Life: 70,000 hrs

### Applications:

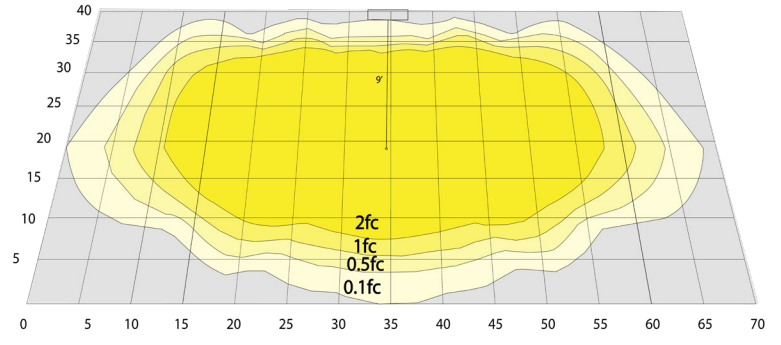
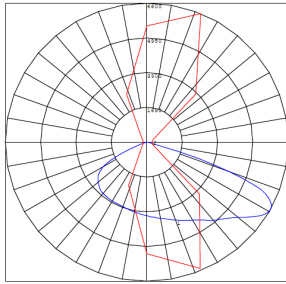
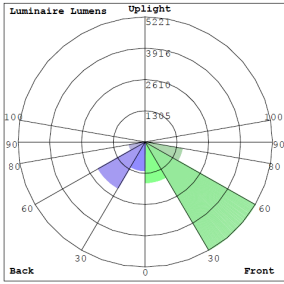
- Ideal for general site lighting, street, roadway, alleys, loading docks, doorway, pathway and parking areas

### Other Models:

- 50W | 7250LM | STL4-15-50W-30K
- 50W | 7250LM | STL4-15-50W-40K
- 50W | 7250LM | STL4-15-50W-50K
- 150W | 21000LM | STL4-50-150W-30K
- 150W | 21000LM | STL4-50-150W-40K
- 150W | 21000LM | STL4-50-150W-50K



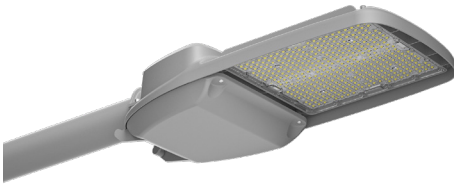
## Photometrics: STL4-30-100W



BUG Rating: B3-U0-G2

Area 40'x 70' Mounting Height: 9'

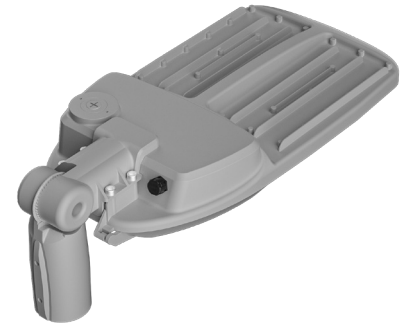
## Other Views:



Side View  
(Shown With Slip Fitter)



Front View  
(Shown With Slip Fitter)



Back View  
(Shown With Slip Fitter)

## Performance Table: STL4-30-100W

MODEL NO.	Wattage	Voltage	Lumens	Color Temp.	BUG Rating	LPW
STL4-30-100W-30K STL4-30-100W-50K	30W 50W 80W 100W	120-277V	4350LM 7250LM 11600LM 14500LM	3000K 4000K 5000K	B3-U0-G2	145

## Sample Ordering

Model Min. Watt Max. Watt Color Temp.

STL4 - 30 - 100W -

30K = 3000K  
40K = 4000K  
50K = 5000K

### Accessories:

Blank = No Option For Accessories  
PC-TWIST = 1800W TUNGSTEN TWIST LOCK PHOTOCELL  
STL4-SF = SLIP FITTER FOR POLES UP TO 2-3/4" O.D

### Factory-Installed Options

Blank = No Option  
OPT-STL-SH-CW = Half shroud option  
OPT-STL-SH-FG = Full glare shroud option

### ACCESSORIES:



PC-TWIST  
1800W TUNGSTEN TWIST LOCK  
PHOTOCELL



STL4-SF  
SLIP FITTER FOR POLES UP TO  
2-3/4" O.D

### FACTORY-INSTALLED OPTION:



OPT-STL-SH-CW  
HALF SHROUD OPTION



OPT-STL-SH-FG  
FULL-GLARE SHROUD OPTION

