

Customer Name:

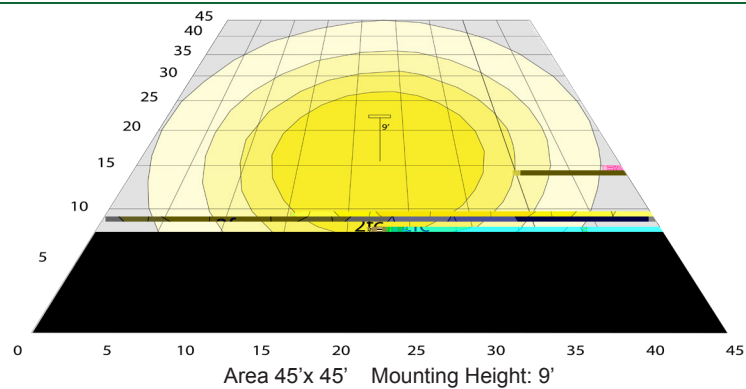
Project Name:

Note:

Type:

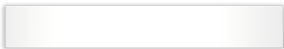
- Voltage: 120-277VAC 50/60Hz
- Wattage: 20W
- Power Factor: >0.95
-

Photometrics: SCX1.5-2FT-UD-MCTP5-D



BUD Rating: B1-U2-G1

Other Views:



Side View



Front View



Back View

Performance Table: SCX1.5-2FT-UD-MCTP5-D

MODEL NO.	Wattage	Voltage	Lumens	Color Temp.	BUG Rating	LPW
SCX1.5-2FT-UD-MCTP5-D	20W	120~277V	2200LM	2700K 3000K 3500K 4000K 5000K	B1-U2-G1	110

Sample Ordering

Model	Size	Up/Down	Color Temp.	Feature
SCX1.5	2FT	UD	MCTP5	D

Accessories:

Blank = No Option For Accessories
SCL-CS1-6FT = ADJ. 6FT 1/16in SINGLE SUSPENSION CANOPY SET WITH KEYHOLE END CON-
NECTOR, NON-POWER SIDE
SCL-CS1P-6FT = ADJ. 6FT 1/16in SINGLE SUSPENSION CANOPY SET WITH KEYHOLE END CON-
NECTOR, POWER SIDE WITH SJTW18/5 WHITE CORD
SCL-CS1P-6FT-NC = ADJ. 6FT 1/16in SINGLE SUSPENSION CANOPY SET WITH KEYHOLE END
CONNECTOR
SCL-CSK-6FT = ADJ. 6FT 1/16in SUSPENSION CANOPY COMPLETE KIT FOR BOTH SIDES WITH
KEYHOLE END CONNECTORS
SCL-GS10 = ADJ. 10FT 1/16in DOUBLE SUSPENSION CABLE WITH SINGLE KEYHOLE CONN.,
LOOP GRIPPER ON TOP
SCL-GS20 = ADJ. 20FT 1/16in DOUBLE SUSPENSION CABLE WITH SINGLE KEYHOLE CONN.,
LOOP GRIPPER ON TOP
SCL-6FT-SJTW18/5 = 6ft White Cord, SJTW 18 AWG 5-Conductor (Black, White, Green + Purple &
Gray for 0-10V Dimming)
SCL-6FT-SJTW18/5-100FT = 100ft Roll of White Cord, SJTW 18 AWG 5-Conductor (Black, White,
Green + Purple & Gray for 0-10V Dimming)
SCL-6FT-SJTW18/5-100FT-BK = 100ft Roll of Black Cord, SJTW 18 AWG 5-Conductor (Black, White,
Green + Purple & Gray for 0-10V Dimming)
SCL-6FT-SJTW18/6-100FT = 100ft Roll of Black Cord, SJTW 18 AWG 6-Conductor (Black, White,
Green + Purple & Gray for 0-10V Dimming + Red for Backup Invertor)
SCL-AH = Heavy-Duty Auxiliary Hook for Up To 1/16" Aircraft Cable
SCL-ASC-500FT = 1/16" 500 ft. Steel Aircraft Cable Suspension

Factory-Installed Options:

Blank = No Option For Accessories
OPT-HBC-125BS-WH = 10FT, 15A, 125V, 18/3 STR, WHT

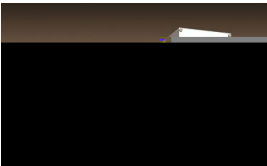
SUSPENDED MOUNTING ACCESSORIES
(NOT INCLUDED)



FACTORY-INSTALLED OPTIONS:

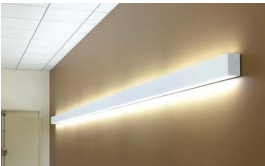


MOUNTING AND MODULES OPTIONS:



Recessed Mounted
(Flanged)

Surface Mounted



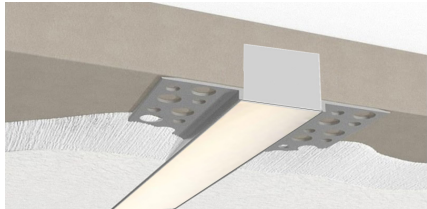
Wall Mounted



Suspended



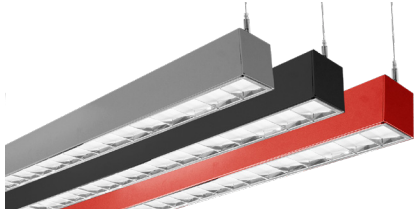
T-Bar Installation



Flangless Recessed Mounted
(Mud-In)



Louver Kit Option



Color of Your Choice



Inside Corner Module

120° Corner Module

SCX1.5-IC-UD-MCT5-BKSCX1.5-C120-UD-MCT5-BK



OC Module

SCX1.5- OC-UD-MCTS-BK



MOUNTING OPTIONS:

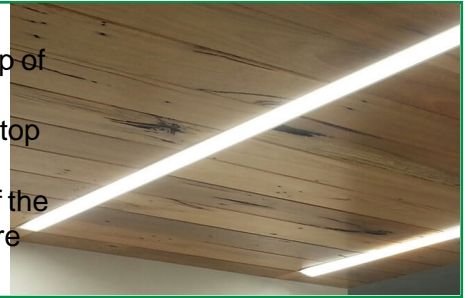
FLANGELESS RECESSED INSTALLATION IN WOOD CEILING

No additional accessories required.

Make recessed preparations by installing a horizontal plank of wood on top of the wood ceiling at a recessed height of 3 3/8".

Screw and anchor kit provided with each fixture can be used to fasten the top of the fixture to the wood plank through the holes on top of the fixture.

You can also install vertical wood boards on top of the ceiling at the edge of the opening and open the fixture and put screws through the side of the fixture housing to fasten it to the wood boards.



SUSPENSION ROD KITS (SET OF 2)

Model	SIZE
SCL-RS-12	12 IN
SCL-RS-18	18 IN
SCL-RS-24	24 IN
SCL-RS-36	36 IN
SCL-RS-48	48 IN

WALL MOUNTING

Model	DESCRIPTION
OPT-SCX1.5-WM-2FT	Install this optional wall mounting brackets on the back of the fixture. Connection cables will enter the fixture through one of these wall-mounting brackets. On your purchase order, please specify the position of where your wire entry from the wall.



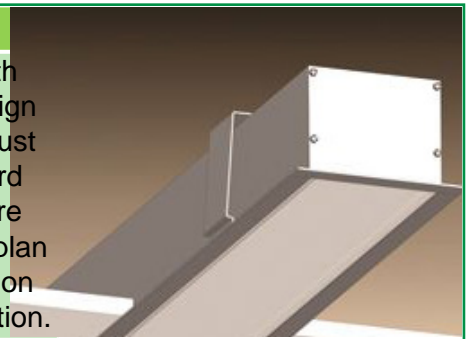
WALL MOUNTING

Model	DESCRIPTION
OPT-SCX1.5-WMA-2FT	Add this option to the fixture, and wall mounting arms with a wall canopy will be installed on the back of the fixture. The length of each arm is 5". Connection cables will enter the fixture through one of the arms. On your purchase order, specify the position of your wire entry from the wall, and the arm will be installed on the back accordingly.

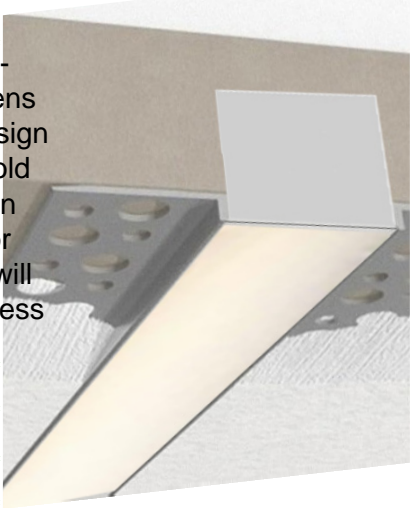


RECESSED MOUNT WITH FLANGE

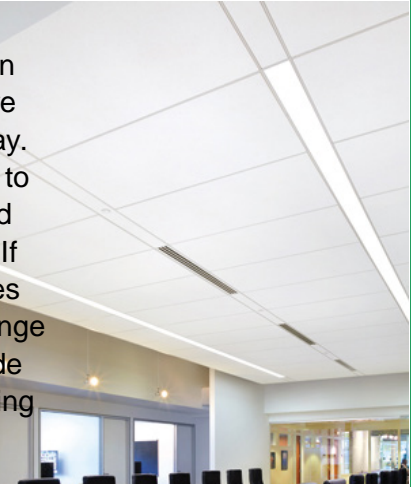
Model	DESCRIPTION
OPT-SCX1.5-FMR-2FT	Order this option and the fixture will be equipped with a 1/2" wide flange on four sides. Advanced design toggle-style brackets will also be provided, to adjust and hold the fixture against drywall or other hard ceilings from the top. When linking to another fixture or corner module, call us or send a copy of your plan along with your PO, and flanges will be removed on those ends that need to make a seamless connection.



FLANGELESS RECESS MOUNT IN DRYWALL (MUD-IN)

Model	DESCRIPTION	
OPT-SCX1.5-MIF-2P	Order this option and the fixture will be equipped with mud-in brackets on all four sides, mounted at 1/16" from the lens surface (specify if other spacing is needed). Advanced design toggle-style brackets will also be provided, to adjust and hold the fixture against the drywall ceiling from the top. When linking to another fixture or corner fixture module call us or send a copy of your plan along with your PO and angles will be removed on those end that needs to make a seamless connection.	
OPT-SCX1.5-MIF-L	This is a L Module option.	
OPT-SCX1.5-MIF-T	This is a T Module option.	
OPT-SCX1.5-MIF-X	This is a X Module option.	
OPT-SCX1.5-MIF-IC	This is a Inside Corner Module option.	

T-BAR INSTALLATION

Model	DESCRIPTION	
OPT-SCX1.5-TBAR-2P	Add this option and 1/2" wide angles will be installed on the two long sides of the fixture. The two ends of the fixture will fall onto the T-bar grids and will be supported this way. The T-bar tiles on the two sides of the fixture must be cut to allow for the width of the fixture. The tile will fall onto and be supported by the angles on both sides of the fixture. If you plan to support the fixture by the grids on three sides and tile on one side, call us or specify on your PO, and angle will be installed only on one side of the fixture. To provide safety and support from the beams above the T-bar ceiling order 10ft or 20ft aircraft suspension kits below.	
SCL-GS10	Adjustable 1/16" 10ft suspension kit with loop gripper & toggle ends hold up to 70 lbs load.	
SCL-GS20	Adjustable 1/16" 20ft suspension kit with loop gripper & toggle ends hold up to 70 lbs load.	
OPT-FWH-63 OPT-FWH-65 OPT-FWH-66	This is a 6FT 3-Wire Whip option. This is a 6FT 5-Wire Whip option. This is a 6FT 6-Wire Whip option.	




SURFACE MOUNTING

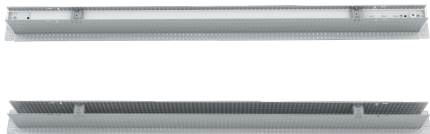
No additional accessories required.
Screw and anchor kit provided with each fixture can be used to fasten the fixture directly to the hard surface through the holes on top of the fixture.



FIELD-INSTALLED FLANGED RECESSED MOUNT DRYWALL KIT

Model	DESCRIPTION	SIZE	
SCX1.5-FMRK-2FT	SCX-2Ft. Field-Installed Flanged Recessed Mount Drywall Kit	2FT	

SCX1.5 FIELD-INSTALLED MUD-IN FLANGE-LESS RECESSED MOUNT KIT

Model	DESCRIPTION	SIZE	
SCX1.5-MIFK-2FT	SCX-2Ft Field-Installed Mud-In Flange-Less Recessed Mount Kit	2FT	

FACTORY-INSTALLED OPTIONS:

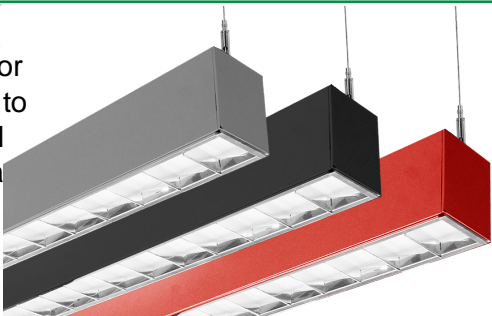
EMERGENCY BATTERY BACKUP

Model	DESCRIPTION
OPT-EM-CM1INT	This is an option for a 90-minute backup battery installation. If you need to order this series for the xture, please have your purchase order ready and call us or specify on the order which xture to install this option and the test button.

BI-LEVEL MOTION SENSOR

Model	DESCRIPTION
OPT-SCX-SEN2US	This option installs an advanced motion sensor that will turn the lights on when the area is occupied. When the area is cleared, after a preset hold time of 5 sec or more the lights are dimmed to a standby level of 30% or more. If still no motion is detected, after the standby period, the light is turned o . All setting is programmable with a remote control.
OPT-WEC-3RC	This is an optional remote control for sensor.
OPT-SEN-SCX-2MRLV-5	This is a programmable microwave Bi-Level sensor.
OPT-SEN-2US-DAYLIGHT	It is an ultrasonic Bi-Level Dimming Daylight sensor option for internal installation inside the xture. (Remote not needed)

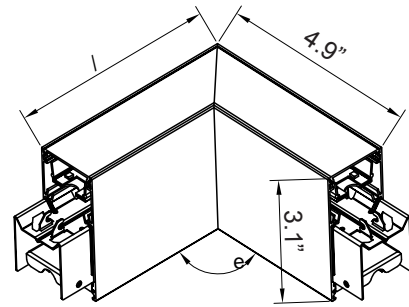
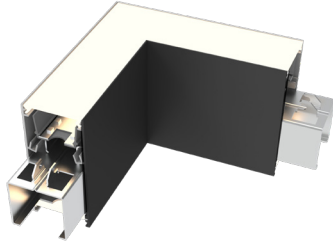
COLOR OF YOUR CHOICE

Model	DESCRIPTION	
OPT-SCX-CLR-2FT	Add this option and specify your desired color on your purchase order or provide a swatch to match. For painted angled xture or optional rod, mounting set please also add the relevant option below for each xture.	
OPT-SCX-CLR-FRM	This is a painted angles option.	
OPT-SCX-CLR-RODS	This is a painted rod set option.	

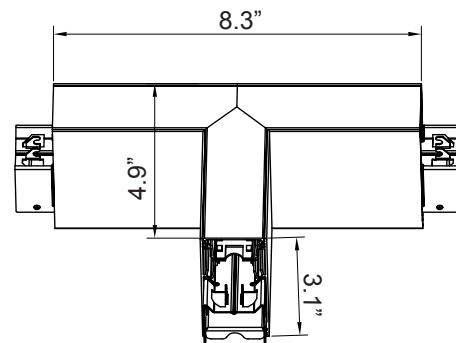
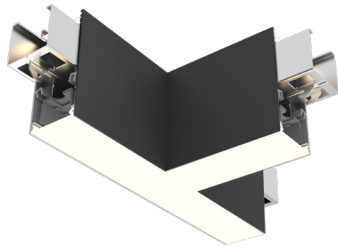


CORNER FIXTURE MODULES:

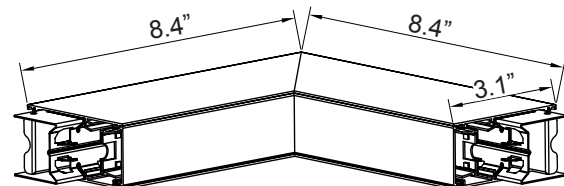
Built-in LED Modules



Model	JOINT TYPE	LUMENS	MCT4	DIMENSION
SCX1.5-L-UD-MCT5	L	508LM 575LM 616LM 660LM	2700K 3000K 3500K 4000K 5000K	4.9" X 4.9" X 3.1"

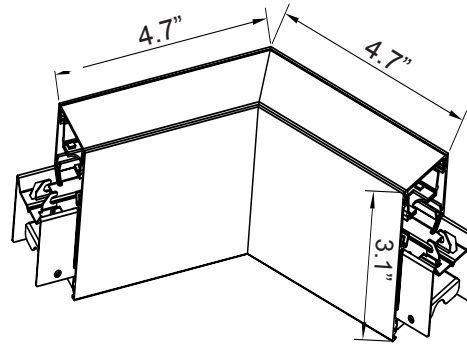
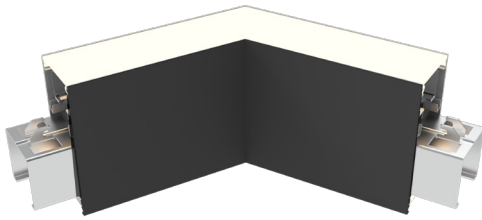


Model	JOINT TYPE	LUMENS	COLOR TEMP	DIMENSION
SCX1.5-T-UD-MCT5	T	629LM 726LM 787LM 854LM	2700kK 3000K 3500K 4000K 5000K	8.3" X 4.9" X 3.1"

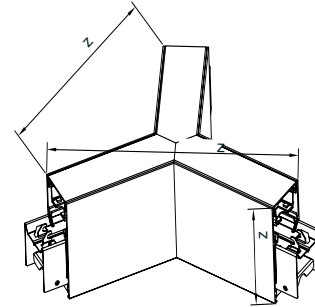
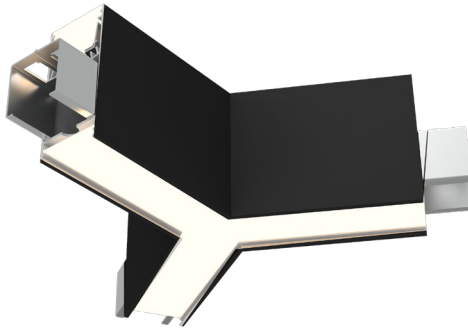


Model	JOINT TYPE	LUMENS	COLOR TEMP	DIMENSION
SCX1.5-IC-UD-MCT5	INSIDE CORNER	629LM 726LM 787LM 854LM	2700K 3000K 3500K 4000K 5000K	8.4" X 8.4" X 3.1"



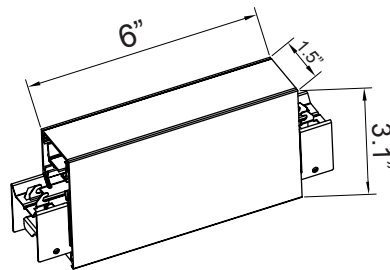
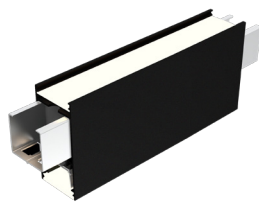


Model	JOINT TYPE	LUMENS	COLOR TEMP	DIMENSION
SCX1.5-C120-UD-MCT5	120° CORNER	508LM 575LM 616LM 660LM	2700K 3000K 3500K 4000K 5000K	4.7" X 4.7" X 3.1"

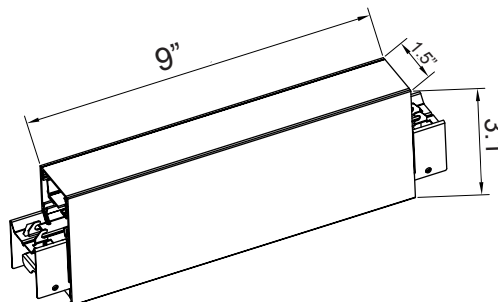
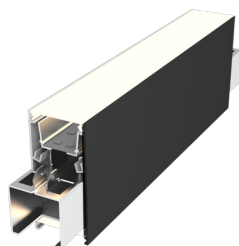


Model	JOINT TYPE	LUMENS	COLOR TEMP	DIMENSION
SCX1.5-Y-UD-MCT5	Y	508LM 575LM 616LM 660LM	2700K 3000K 3500K 4000K 5000K	8.2" X 7.1" X 3.1"





Model	JOINT TYPE	LUMENS	COLOR TEMP	DIMENSION
SCX1.5-6IN-UD-MCTS	6in Module	508LM 575LM 616LM 660LM	2700K 3000K 3500K 4000K 5000K	6" X 3.1" X 1.5"



Model	JOINT TYPE	LUMENS	COLOR TEMP	DIMENSION
SCX1.5-9IN- UD-MCT5	9in Module	508LM 575LM 616LM 660LM	2700K 3000K 3500K 4000K 5000K	9" X 1.5" X 3.1"



COLOR CHART: * Choose from one of our Premium Colors with no set-up fee.

Gloss:



SILVER METALLIC
70 GLOSS
T357-GR105



SILVER METALLIC
30 GLOSS
T353-GR06

DARK RED 90
GLOSS
P009-RD02

INTERNATIONAL
ORANGE 90
GLOSS
T009-OG26

SAFETY ORANGE
90 GLOSS
T009-OG01

YELLOW 90
GLOSS
T009-YL14

YELLOW 90
GLOSS
T009-YL01



RAL 8028 TERRA
BROWN 90 GLOSS
C209-BR358

TRAFFIC GREEN
70 GLOSS
T007-GN16

GREEN 70 GLOSS
T007-GN13

GREEN 60 GLOSS
C006-GN03

BLUE 90 GLOSS
T009-BL01

DARK BLUE 80
GLOSS
T008-BL20

Hammer:



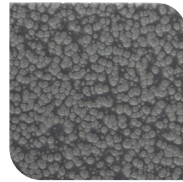
WHITE HAMMER
T013-WH09



BEIGE HAMMER
T013-BG38



GREY HAMMER
C013-GR08



SILVER
HAMMERTONE
T064-GR05

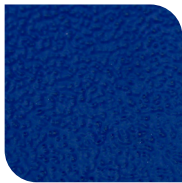
BLACK HAMMER
T013-BK62



RED HAMMER
T013-RD15



GREEN HAMMER
T013-GN220



BLUE HAMMER
T013-BL468



BRONZE HAMMER
T012-BR161

Texture:



WHITE TEXTURE
C031-WH120



FLINT GRAY
TEXTURE
T243-GR522



BLACK TEXTURE
C241-BK109



RED TEXTURE
T241-RD129



BLUE TEXTURE
C241-BL544

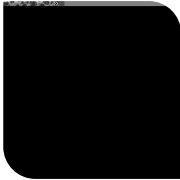


OIL RUBBED
BRONZE TEXTURE
T291-BR251

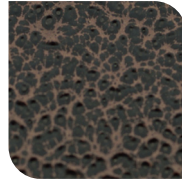
Vein:



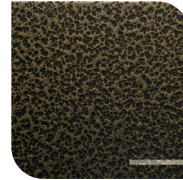
BLUE HAMMER
T013-BL468
T075-WH34



SILVER HAMMER
T375-BK07
T009-BL01



COPPER VEIN
EXTERIOR
T009-BL05
T075-BK211



GOLD VEIN
T375-BK10



DARK BLUE HAMMER
T008-BL20
T375-BK07

BLUE TEXTURE
C241-BL210

BLUE 80 GLOSS
H308-BL03

