

SCSSL SERIES

SCSSL-UD-4FT-MCTP
SCSSL-UD-4FT-MCTP-BK

ARCHITECTURAL 0.4" SLIM UP&DOWN /W SEPARATE CONTROLS LINEAR LIGHT

MCTP Multi Color Temperature & Multi Power/Wattage (Selectable)

WESTGATE

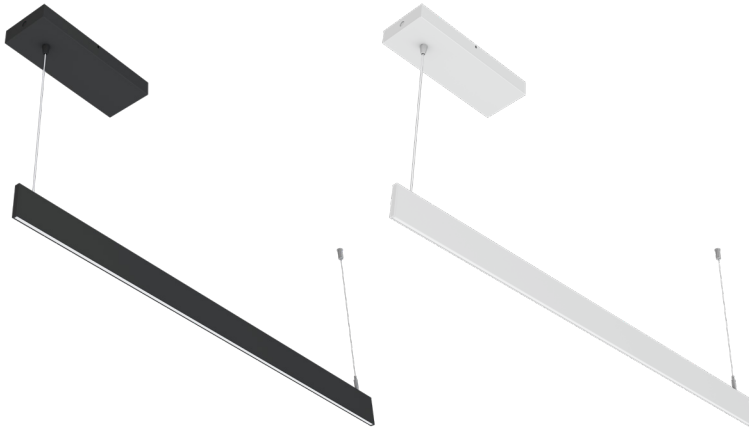
THE FUTURE IS HERE...AND IT'S QUITE BRIGHT!

Customer Name: _____

Project Name: _____

Note: _____

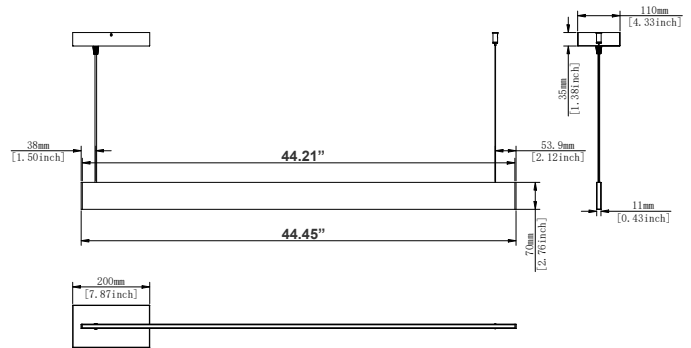
Type: _____



Avail Finish:



A modern decorative Euro-design suspended light suitable for conference tables, creative offices and department stores.



Canopy Dimension: 44.21"(W) x 1.38"(H) x 4.33"(D)

Fixture Dimension: 44.45"(W) x 2.79"(H) x 7.87"(D)

Features

- LED Superior Architectural Lights
- Flat Frosted PC Lens
- Aluminum Housing With Sandy White and Black Finish
- MCTP: Multi Color Temperature and Power (Selectable, the switches are inside the Canopy)
- 5-Year Warranty

Technical Specifications

Electrical:

- Voltage: 120-277V AC 50/60Hz
- Wattage: 10W/15W/20W
- Power Factor: >0.9
- LPW: 70LM/W
- Total Harmonic Distortion: ≤19 %

Mechanical:

- Aluminum Housing With Sandy Black and White Finish
- Two 10FT Adjustable Suspension Cables with Canopies Included
- Lens: Optic Lens
- Operating Temperature: -22°F to +104°F
- IP Rating: IP20, Suitable for damp location
- 5-Year Warranty

Lighting:

- Dimming: (Dual Function) Triac Dimmable at 120V & 0-10V Dimming at 120-277V
- Total Lumens: 1400LM Max.
- Color Temperatures: 2700K/3000K/3500K/4000K/5000K
- MCTP: Multi Color Temperature and Power (Selectable, the switches are inside the Canopy)
- Color Rendering Index: CRI ≥ 80
- 50,000 Hours Rated Life
- Beam Angle: 120°

Applications:

- Ideal for offices, hotels, corridors, saloons, libraries, meeting rooms, conference halls, and the best solution for modern lighting solutions
- It can be used in any indoor applications

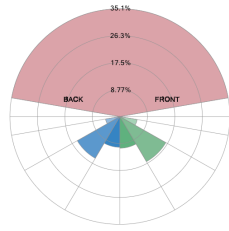


Phone: (877) 805-2252 | Fax: (877) 805-2252
www.westgatemfg.com



Photometrics: SCSSL-UD-4FT-MCTP

BUG rating



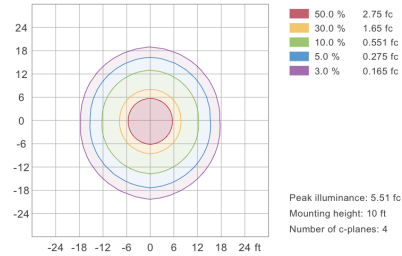
Rating: B1 U4 G1

Direction	Beam Spread	Value	Percentage
Forward Light	Low (0-30°)	207	10.3%
	Medium (30-60°)	340.7	16.9%
	High (60-90°)	112.6	5.6%
	Very High (90-90°)	14.68	0.73%
Back Light	Low (0-30°)	201.1	10.0%
	Medium (30-60°)	315.7	15.7%
	High (60-90°)	93.42	4.65%
	Very High (90-90°)	7.962	0.396%
Uplight	Low (90-100°)	11.94	0.594%
	High (100-180°)	705.1	35.1%
	Total	2010	100%

IESNA TM-15-07 Luminaire Classification System For Outdoor Luminaires

BUD Rating: B1-U4-G1

Iso-illuminance plot



Peak illuminance: 5.51 fc
Mounting height: 10 ft
Number of c-planes: 4

Area 24' x 28' Mounting Height: 9'

Performance Table: SCSSL-UD-4FT-MCTP

MODEL NO.	Wattage	Voltage	Lumens	Color Temp.	BUG Rating	LPW
SCSSL-UD-4FT-MCTP	10W	120~277V	700	2700K	B1-U4-G1	70
SCSSL-UD-4FT-MCTP-BK	15W		1050	3000K		
	20W		1400	3500K		
				4000K		
				5000K		

Sample Ordering

Model Direction Size Color Temp. Finish

SCSSL - UD - 4FT - MCTP -

BK = Black
WH = White

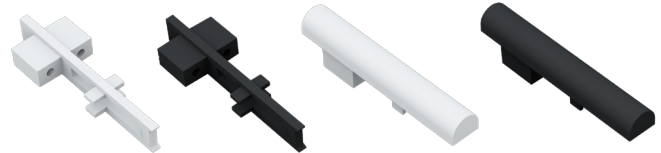
Accessories:

- Blank = No Option For Accessories
- SCSSL-REC = SCSSL Rounded End Cap
- SCSSL-REC-BK = SCSSL Rounded End Cap. Black
- SCSSL-CEC = SCSSL Coupling End Cap
- SCSSL-CEC-BK = SCSSL Coupling End Cap

Factory-Installed Options:

- Blank = No Option For Accessories
- OPT-EM-SCSL-WH = Factory-Installed EM option, Installed in Deeper Canopy, White
- OPT-EM-SCSL-BK = Factory-Installed EM option, Installed in Deeper Canopy, Black

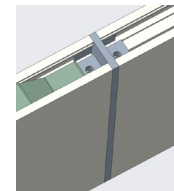
ACCESSORIES:



SCSSL-CEC SCSSL-CEC-BK SCSSL-REC SCSSL-REC-BK



SCSL PC Lens shown with Round Endcap



SCSSL-CEC

FACTORY-INSTALLED OPTIONS:



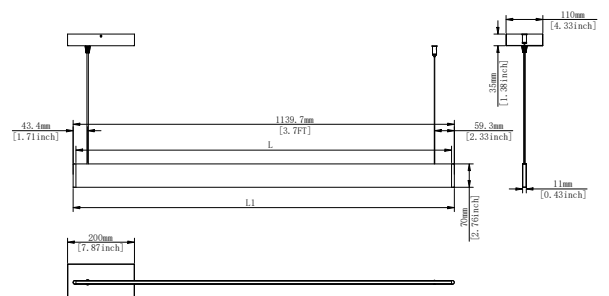
OPT-EM-SCSL-WH
OPT-EM-SCSL-BK



SCSSL-UD-4FT-MCTP
SCSSL-REC



SCSSL-UD-4FT-MCTP-BK
SCSSL-REC-BK



SCSSL-UD-4FT-MCTP
SCSSL-REC
3.7"(W) x 2.76"(H) x 4.33"(D)

