

# SCLT SERIES

COMMERCIAL INDOOR LIGHTING

**WESTGATE**

THE FUTURE IS HERE...AND IT'S QUITE BRIGHT!

SCLT-4FT-50W-MCTP-D

SCLT-4FT-50W-MCTP-D-BK

LED PARABOLIC SUSPENDED DOWN LIGHT

**MCTP** Multi Color Temperature (Selectable)

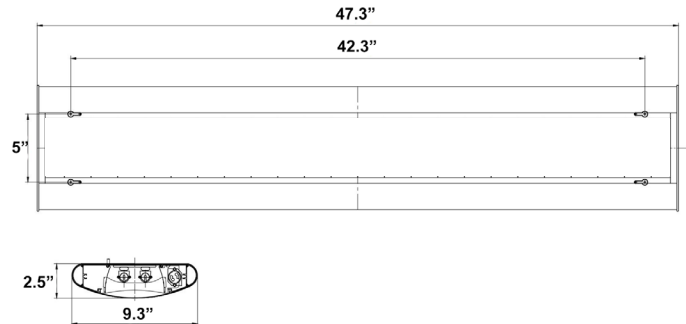


Customer Name: \_\_\_\_\_

Project Name: \_\_\_\_\_

Note: \_\_\_\_\_

Type: \_\_\_\_\_



5" H x 2 1/2" D x 47.3" W

Ideal for Storage rooms, Offices Conference rooms, Retail Reception areas, Hallways Education facilities

## Features

- Lens: Parabolic Reflector Lens
- Housing: Anodized Aluminum
- 5-Year Warranty
- Rated Life: 50,000 Hrs

## Technical Specifications

### Electrical:

- Voltage: 120-277V AC 60Hz
- Wattage: 30W/40W/50W
- Power Factor: >0.95
- Efficacy: 115 LPW
- THD: <20%

### Mechanical:

- Housing: Anodized Aluminum
- Polycarbonate End Caps
- Ambient Temperature: -22°F to +104°F
- 5-year Warranty

### Lighting:

- MCT: Multi Color Temperature (Selectable with Switch Inside Fixture)
- Lens: Parabolic Reflector Lens
- High Quality LED Chips provide High Efficiency, Heat Dissipation, Stability, and Lumen Maintenance
- Dimmable: 0~10V Dimmable
- Lumens Range: 6900LM
- Color Temperatures: 3500K/4000K/5000K
- Color Rendering Index: CRI ≥ 80
- Rated Life: 50,000 Hrs

### Applications:

- Storage rooms
- Offices
- Conference rooms
- Retail
- Reception Areas
- Hallways
- Education Facilities

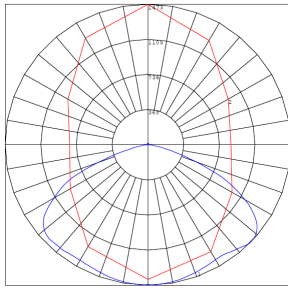
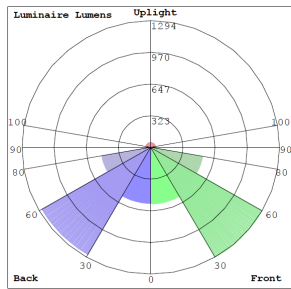


Phone: (877) 805-2252 | Fax: (877) 805-2252  
www.westgatemfg.com

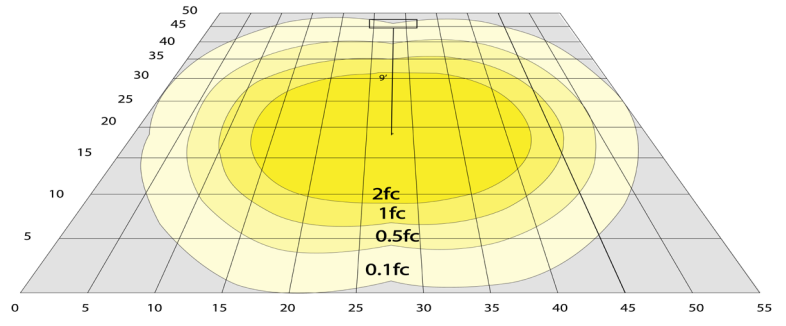


WG-ZA-27-22

## Photometrics: SCLT-4FT-50W-MCTP-D



BUG Rating: B2-U2-G1



Area 50'x 55' Mounting Height: 9'

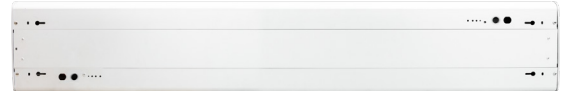
## Other Views:



Side View



Lens View



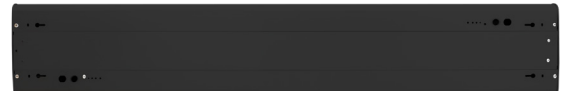
Back View



Side View



Lens View



Back View

## Performance Table: SCLT-4FT-50W-MCTP-D

MODEL NO.	Wattage	Voltage	Lumens	Color Temp.	BUG Rating	LPW
SCLT-4FT-50W-MCTP-D	35W	120~277V	4025LM	3500K	B2-U2-G1	115
SCLT-4FT-50W-MCTP-D-BK	40W		4600LM	4000K		
	50W		6900LM	5000K		

## Sample Ordering

Model	Size	Watt	Color Temp.	Dimming	Finish
SCLT	4FT	40W	MCT	D	<input type="text"/>

Blank = White  
BK = Black

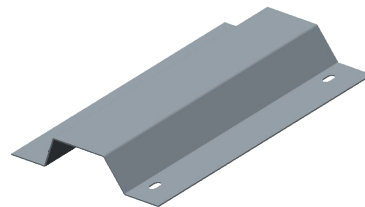
### Accessory:

Blank = No Option For Accessories  
SCLP-CB = COUPLING BRACKET

### Factory-Installed Options:

Blank = No Option For Accessories  
OPT-EM-AC2EXT = EMERGENCY BACKUP INTERNAL BATTERY  
OPT-SLCP-ULK = UP LIGHT 20W, MCT  
OPT-SLCP-SURF = SURFACE-MOUNT

### ACCESSORY:



SCLP-CB

### FACTORY-INSTALLED OPTIONS:



OPT-EM-AC2EXT

