

POB SERIES Commercial Lighting

POB-UD-3FT-45W-40K-D

PATIENT OVERBED HEALTHCARE LIGHT WITH PULL CHAIN AND INDICATOR LIGHT

WESTGATE
THE FUTURE IS HERE...AND IT'S QUITE BRIGHT!

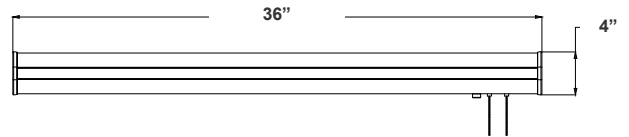


Customer Name: _____

Project Name: _____

Note: _____

Type: _____



36"(W) x 4"(D)

The Patient Overbed Healthcare Light from Westgate Mfg offers soft, glare-free illumination with an easy-to-use pull chain for patient control and an integrated indicator light for operational status. Designed for energy efficiency and durability, it ensures long-lasting performance and reduced costs. Ideal for hospitals, nursing homes, and assisted living facilities, this light enhances patient care and satisfaction.

Features

- LED Strip Lights
- 5-Year Warranty
- 50,000 Hours Rated Life
- Lens: Frosted Diffuse Polycarbonate Lens

Technical Specifications

Electrical:

- Voltage: 120-277VAC 50/60Hz
- Wattage: 15W UP 35W DOWN
- Power Factor: >0.98
- Efficacy: 115 LPW

Mechanical:

- White Finish
- Housing: Heavy Die-Formed Steel, White Powder Coated
- Lens Snaps Into The Tabs Of The Housing Fixture
- Mounting: Surface Mount, Wall Mount
- Operating Temperature: -22°F -104°F
- Suitable For Damp Location

Lighting:

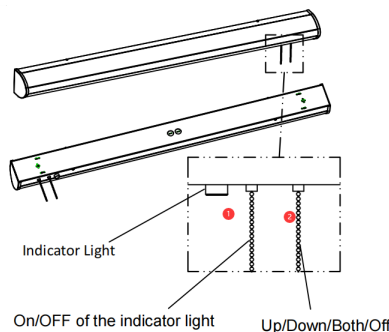
- Dimmable: 0~10V Dimming
- Total Lumens: 5157LM
- Color Temperatures: 4000K
- Color Rendering Index: CRI ≥ 80

Applications:

- Hospitals
- Nursing homes
- Assisted living facilities
- Rehabilitation centers
- Hospice care facilities

Pull Chain Steps

- #1
- On/OFF of The Indicator Light
- #2
- 1- Up light
- 2- Downlight
- 3- Up/down on
- 4- Off

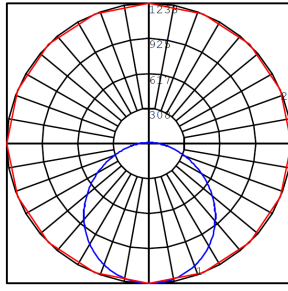
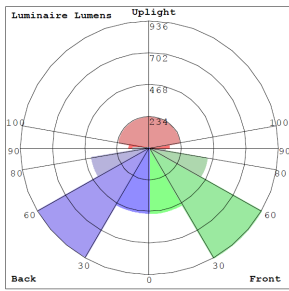


Phone: (877) 805-2252 | Fax: (877) 805-2252
www.westgatemfg.com

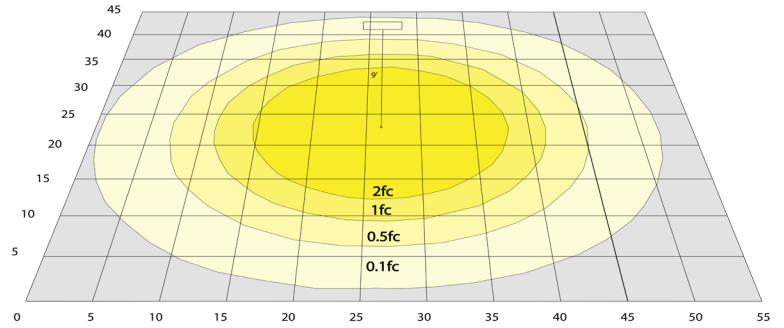


WG-Z5-2C-2Z

Photometrics: POB-UD-3FT-45W-40K-D

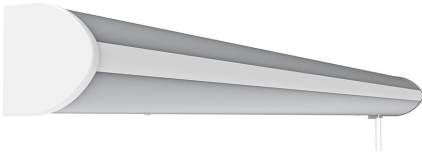


BUD Rating: B1-U3-G2

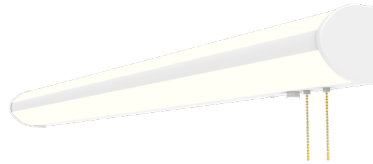


60W 5000K, Area 45'x 55' Mounting Height: 9'

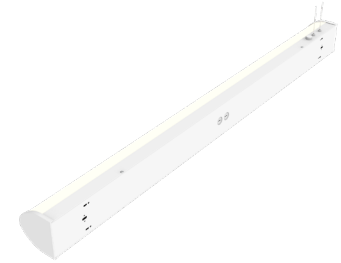
Other Views:



Side View



Front View



Back View

Performance Table: POB-UD-3FT-45W-40K-D

MODEL NO.	Wattage	Voltage	Lumens	Color Temp.	BUG Rating	LPW
POB-UD-3FT-45W-40K-D	45W	120~277V	5157LM	4000K	B1-U3-G2	115

Sample Ordering

Model	Up/Down	Size	Wattage	Color Temp.	Dimming
POB	UD	3FT	45W	40K	D

Factory-Installed Options:

Blank = No Option For Accessories

OPT-HBC-125TL-WH = NEMA TWIST-LOCK PLUG 8FT, 15A, 125V, WHITE

OPT-HBC-277TL-WH = NEMA TWIST-LOCK PLUG 8FT, 15A, 277V, WHITE

OPT-HBC-125SB-WH = STRAIGHT BLADE PLUG 10FT, 15A, 125V, 3-CONDUCTOR 18AWG, WHITE

FACTORY-INSTALLED OPTIONS:



OPT-HBC-125SB-WH



OPT-HBC-125TL-WH



OPT-HBC-277TL-WH

