

LTRM SERIES Commercial Lighting

LTRM-2X2-MCTP
ARCHITECTURAL SLOPED-LENS TROFFER

MCTP Multi Color Temperature & Multi Power/Wattage (Selectable)

WESTGATE
THE FUTURE IS HERE...AND IT'S QUITE BRIGHT!

Customer Name: _____

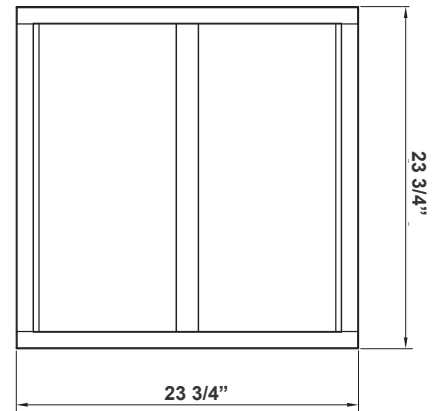
Project Name: _____

Note: _____

Type: _____



This modern, energy-efficient troffer is designed with a sloped lens for enhanced light distribution, offering flexibility with selectable wattage and color temperature (CCT). Ideal for commercial and architectural spaces, it provides seamless integration with varied design aesthetics while delivering superior illumination performance. Featuring adjustable power settings, this troffer maximizes energy savings without compromising lighting quality, ensuring compliance with energy codes and standards. Perfect for office, retail, and educational environments.



23 3/4"(L) x 23 3/4"(W) x 2 2/5"(H)

Features

- High Quality LED Chips Provide High Efficiency, Heat Dissipation, Stability, and Lumen Maintenance
- 7-Year Warranty
- 70,000 Hours Rated Life
- Lens: Polycarbonate
- Multi CCT: Selectable Multi-CCT & Power Switches Inside The Driver Box

Technical Specifications

Electrical:

- Voltage: 120-277VAC 50/60Hz
- Wattage: 25W/30W/36W
- Power Factor: >0.92
- Efficacy: 125 LPW

Mechanical:

- High Quality LED Chips Provide High Efficiency, Heat Dissipation, Stability, and Lumen Maintenance
- Individual, Pure Aluminum Heat Sinks Offers Heat Transmission Faster Than Die Cast Steel
- Driver disconnect provided where required to comply with US and Canadian codes
- Performance Engineered Optical Lens Assembly Delivers Unique Beam Angles and Reduces Glare
- Polycarbonate Lens
- Operating Temp: -22°F to 104°F
- IP Rating: IP20 Indoor use only
- 7-Year Warranty

Lighting:

- Dimmable: 0~10V Dimming
- Multi CCT: Selectable Multi-CCT & Power Switches Inside The Driver Box
- Total Lumens: 3150LM/3750LM/4375LM
- Color Temperatures: 3500K/4000K/5000K
- Color Rendering Index: CRI ≥ 80
- 70,000 Hours Rated Life

Applications:

- Retail/Schools/Offices
- Healthcare/Conference rooms
- Hospitality/Corridors
- Reception areas/Foyer
- Library

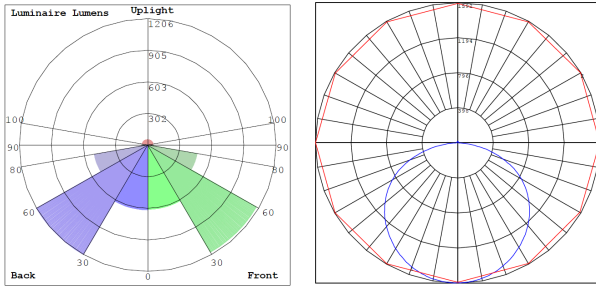


Phone: (877) 805-2252 | Fax: (877) 805-2252
www.westgatemfg.com |

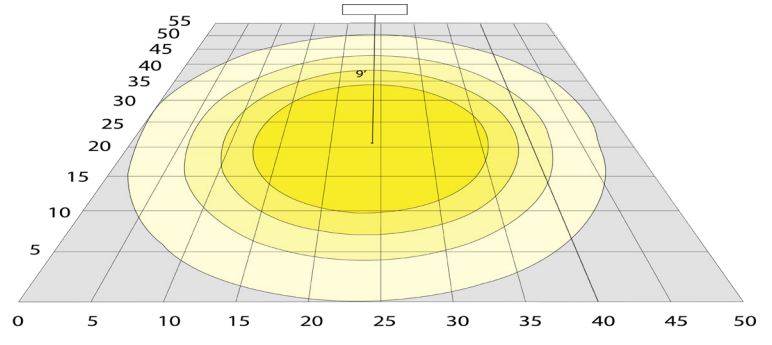


WG-09182024

Photometrics: LTRM-2X2-MCTP



BUG Rating: B2-U3-G1

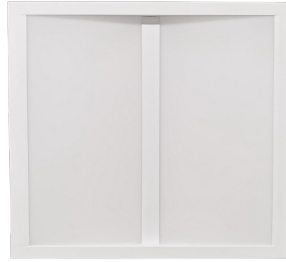


Area 55'x 50' Mounting Height: 9'

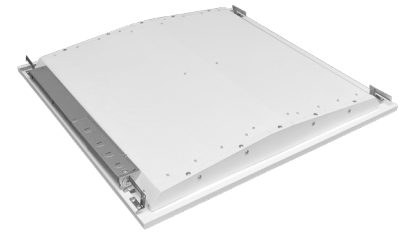
Other Views:



Side View



Front View



Back View

Performance Table: LTRM-2X2-MCTP

MODEL NO.	Wattage	Voltage	Lumens	Color Temp.	BUG Rating	LPW
LTRM-2X2-MCTP	25W 30W 35W	120~277V	3150LM 3750LM 4375LM	3500K 4000K 5000K	B2-U3-G1	125

Sample Ordering

Model Size Color Temp./Watts

LTRM - 2X2 - MCTP

Accessories:

Blank = No Option For Accessories
LPNG-SRFC-2X2 = SURFACE MOUNTING KIT

Factory-Installed Options:

Blank = No Option For Accessories
OPT-EM-LTRM= EXTERNAL EMERGENCY BACKUP BATTERY MOUNTED ON TOP
OPT-SEN-2MRD-36= PROGRAMMABLE MICROWAVE BI-LEVEL SENSOR
WEC-3RC= OPTIONAL REMOTE CONTROL
OPT-FWH-63= 6FT 3-WIRE WHIP
OPT-FWH-65= 6FT 5-WIRE WHIP
OPT-FWH-66= 6FT 6-WIRE WHIP

ACCESSORIES and MOUNTING KIT:



FACTORY-INSTALLED OPTIONS:



OPT-EM-LTRM



OPT-FWH-63

OPT-FWH-65

OPT-FWH-66



WEC-3RC



OPT-SEN-2MDR-36

