

LTRG SERIES Commercial Lighting

LTRG-2X4-MCTP

ARCHITECTURAL GRILLE TROFFER, WATTAGE & CCT SELECTABLE

MCTP Multi Color Temperature & Multi Power/Wattage (Selectable)

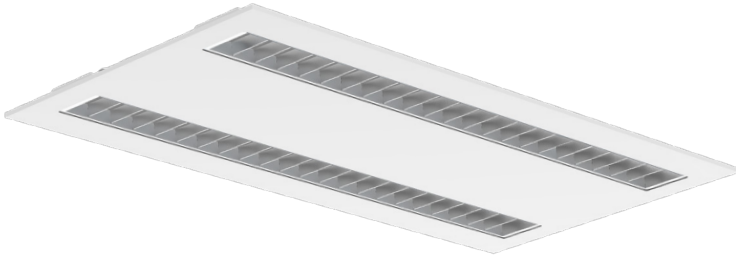
WESTGATE
THE FUTURE IS HERE...AND IT'S QUITE BRIGHT!

Customer Name: _____

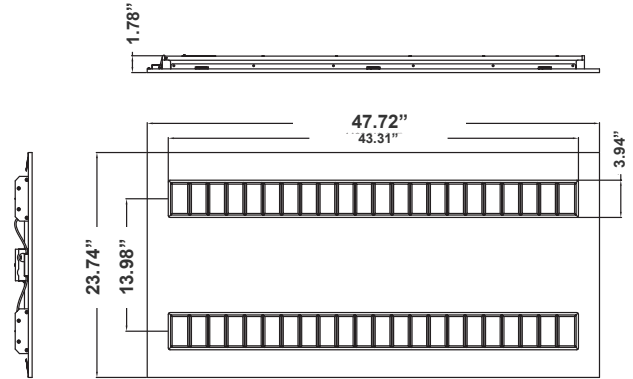
Project Name: _____

Note: _____

Type: _____



The Architectural Grille Troffer with wattage and CCT selectability offers customizable illumination for commercial and architectural spaces. Featuring adjustable light output and color temperatures (3000K-5000K), it provides energy-efficient, versatile, and aesthetically pleasing lighting.



1.78"(D) x 47.72"(W) x 23.74"(H)

Features

- High Quality LED Chips Provide High Efficiency, Heat Dissipation, Stability, and Lumen Maintenance
- 7-Year Warranty
- 70,000 Hours Rated Life
- Lens: Polycarbonate
- Multi CCT: Selectable Multi-CCT & Power Switches Inside The Driver Box

Technical Specifications

Electrical:

- Voltage: 120-277VAC 50/60Hz
- Wattage: 30W/40W/50W
- Power Factor: >0.92
- Efficacy: 120 LPW

Mechanical:

- High Quality LED Chips Provide High Efficiency, Heat Dissipation, Stability, And Lumen Maintenance
- Individual, Pure Aluminum Heat Sinks Offers Heat Transmission Faster Than Die Cast Steel
- Driver Disconnect provided Where Required to Comply With US And Canadian Codes
- Performance Engineered Optical Lens Assembly Delivers Unique Beam Angles and Reduces Glare
- Polycarbonate Lens
- Operating Temp: -22°F to 104°F

Lighting:

- Dimmable: 0~10V Dimming
- Multi CCT: Selectable Multi-CCT & Power Switches Inside The Driver Box
- Total Lumens: 3600LM/4800LM/6000LM
- Color Temperatures: 3500K/4000K/5000K
- Inside The Driver Box
- Color Rendering Index: CRI ≥ 80
- IP Rating: IP20 Indoor use only

Applications:

- Ideal for offices, schools, healthcare, and retail settings, this sleek fixture ensures seamless integration and optimal visual comfort.

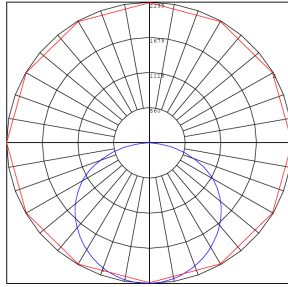
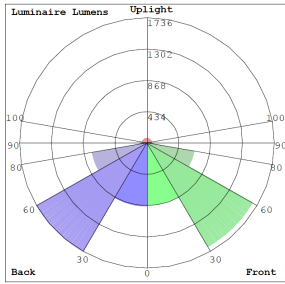


Phone: (877) 805-2252 | Fax: (877) 805-2252
www.westgatemfg.com |

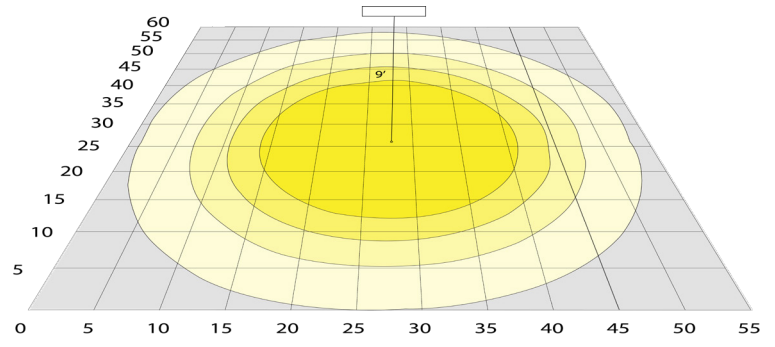


WG-11182024

Photometrics: LTRG-2X4-MCTP



BUG Rating: B2-U3-G2



Area 60'x 55' Mounting Height: 9'

Other Views:



Side View



Back View

Performance Table: LTRG-2X4-MCTP

MODEL NO.	Wattage	Voltage	Lumens	Color Temp.	BUG Rating	LPW
LTRG-2X4-MCTP	30W 45W 50W	120~277V	3600LM 5400LM 6000LM	3500K 4000K 5000K	B2-U3-G2	120

Sample Ordering

Model	Size	Color Temp./Watts
LTRG	2X4	MCTP

Accessories:

Blank = No Option For Accessories

LPNG-SRFC-2X4 = SURFACE MOUNTING KIT

Factory-Installed Options:

Blank = No Option For Accessories

OPT-EM-LTRG = EXTERNAL EMERGENCY BACKUP BATTERY MOUNTED ON TOP

OPT-SEN-2MRD-36 = PROGRAMMABLE MICROWAVE BI-LEVEL SENSOR

WEC-3RC = OPTIONAL REMOTE CONTROL

OPT-FWH-63 = 6FT 3-WIRE WHIP

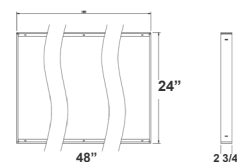
OPT-FWH-65 = 6FT 5-WIRE WHIP

OPT-FWH-66 = 6FT 6-WIRE WHIP

ACCESSORIES and MOUNTING KIT:



LPNG-SRFC-2X4



FACTORY-INSTALLED OPTIONS:



OPT-EM-LTRG



OPT-SEN-2MDR-36



OPT-FWH-63

OPT-FWH-65

OPT-FWH-66



WEC-3RC

