

# LTRG SERIES Commercial Lighting

LTRG-2X2-MCTP  
ARCHITECTURAL GRILLE TROFFER, WATTAGE & CCT SELECTABLE  
**MCTP** Multi Color Temperature & Multi Power/Wattage (Selectable)

**WESTGATE**  
THE FUTURE IS HERE...AND IT'S QUITE BRIGHT!

Customer Name: \_\_\_\_\_

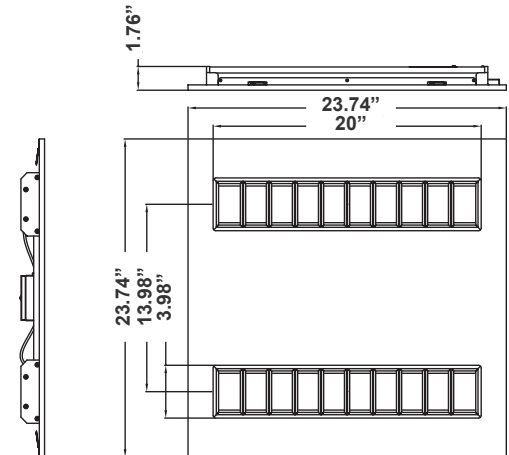
Project Name: \_\_\_\_\_

Note: \_\_\_\_\_

Type: \_\_\_\_\_



The Architectural Grille Troffer with wattage and CCT selectability offers customizable illumination for commercial and architectural spaces. Featuring adjustable light output and color temperatures (3000K-5000K), it provides energy-efficient, versatile, and aesthetically pleasing lighting.



23.74"(L) x 23.74"(W) x 1.76"(H)

## Features

- High Quality LED Chips Provide High Efficiency, Heat Dissipation, Stability, and Lumen Maintenance
- 7-Year Warranty
- 70,000 Hours Rated Life
- Lens: Polycarbonate
- Multi CCT: Selectable Multi-CCT & Power Switches Inside The Driver Box

## Technical Specifications

### Electrical:

- Voltage: 120-277VAC 50/60Hz
- Wattage: 24W/28W/36W
- Power Factor: >0.92
- Efficacy: 120 LPW

### Mechanical:

- High Quality LED Chips Provide High Efficiency, Heat Dissipation, Stability, and Lumen Maintenance
- Individual, Pure Aluminum Heat Sinks Offers Heat Transmission Faster Than Die Cast Steel
- Driver disconnect provided where required to comply with US and Canadian codes
- Performance Engineered Optical Lens Assembly Delivers Unique Beam Angles and Reduces Glare
- Polycarbonate Lens
- Operating Temp: -22°F to 104°F
- IP Rating: IP20 Indoor use only
- 7-Year Warranty

### Lighting:

- Dimmable: 0~10V Dimming
- Multi CCT: Selectable Multi-CCT & Power Switches Inside The Driver Box
- Total Lumens: 2880LM/3360LM/4320LM
- Color Temperatures: 3500K/4000K/5000K
- Color Rendering Index: CRI ≥ 80
- 70,000 Hours Rated Life

### Applications:

- Ideal for offices, schools, healthcare, and retail settings, this sleek fixture ensures seamless integration and optimal visual comfort.

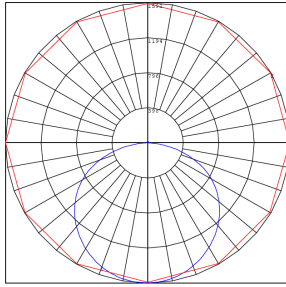
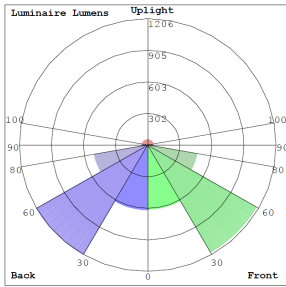


Phone: (877) 805-2252 | Fax: (877) 805-2252  
www.westgatemfg.com |

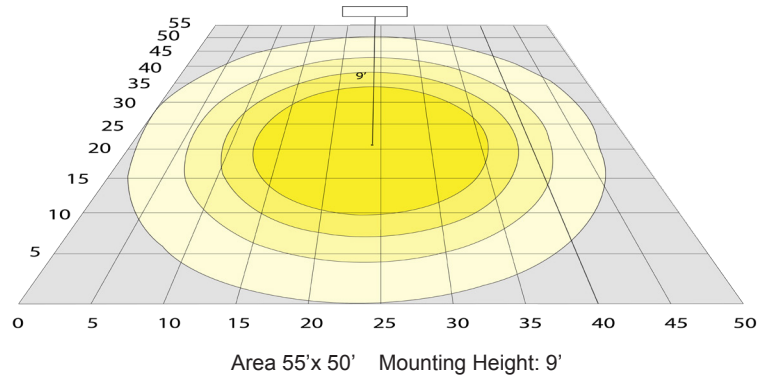


WG-11182024

## Photometrics: LTRG-2X2-MCTP



BUG Rating: B2-U3-G1

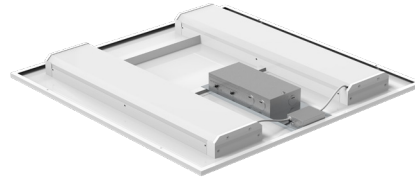


Area 55'x 50' Mounting Height: 9'

## Other Views:



Side View



Back View

## Performance Table: LTRG-2X2-MCTP

MODEL NO.	Wattage	Voltage	Lumens	Color Temp.	BUG Rating	LPW
LTRG-2X2-MCTP	24W 28W 36W	120~277V	2880LM 3360LM 4320LM	3500K 4000K 5000K	B2-U3-G1	120

## Sample Ordering

Model	Size	Color Temp./Watts
LTRG	2X2	MCTP

## Accessories:

Blank = No Option For Accessories  
LPNG-SRFC-2X2 = SURFACE MOUNTING KIT

## Factory-Installed Options:

Blank = No Option For Accessories  
OPT-EM-LTRG = EXTERNAL EMERGENCY BACKUP BATTERY MOUNTED ON TOP  
OPT-SEN-2MRD-36 = PROGRAMMABLE MICROWAVE BI-LEVEL SENSOR  
WEC-3RC = OPTIONAL REMOTE CONTROL  
OPT-FWH-63 = 6FT 3-WIRE WHIP  
OPT-FWH-65 = 6FT 5-WIRE WHIP  
OPT-FWH-66 = 6FT 6-WIRE WHIP

## ACCESSORIES and MOUNTING KIT:



LPNG-SRFC-2X2

## FACTORY-INSTALLED OPTIONS:



OPT-EM-LTRG



OPT-SEN-2MDR-36



OPT-FWH-63  
OPT-FWH-65  
OPT-FWH-66



WEC-3RC

