

LRD SERIES RESIDENTIAL LIGHTING

LRD-10W-MCT5-3WTRPH

3" LED ARCHITECTURAL WINGED PIN HOLE RECESSED LIGHTS

MCT Multi Color Temperature (Selectable)

WESTGATE

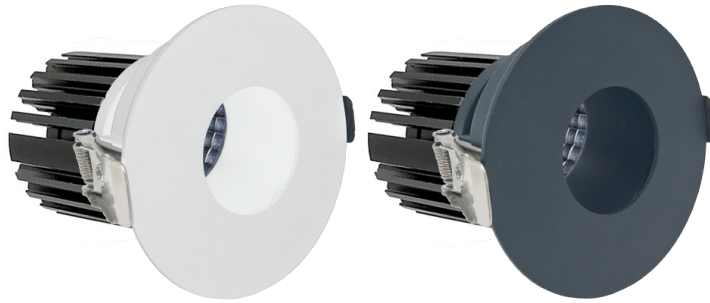
THE FUTURE IS HERE...AND IT'S QUITE BRIGHT!

Customer Name: _____

Project Name: _____

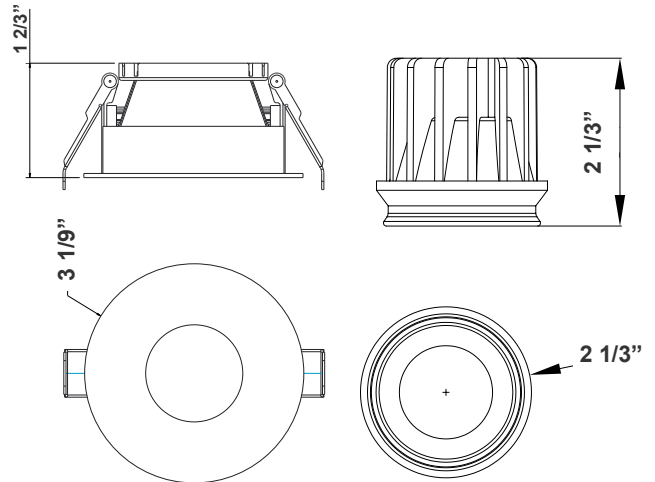
Note: _____

Type: _____



WHITE

BLACK



3 3/4" (H) X 3 1/9" (D)

Box Dimensions:

5-1/4" x 1-5/8" x 1-1/8"

Junction Area Dimensions:

2-1/16" x 1-5/8" x 1-1/8"

Ideal for New as well as old residential and commercial constructions.

Features

- 3" (2-1/8" Actual) LED Pin Hole Recessed Trim
- Die-Cast Aluminum With White Powder Coat Finish
- 5-Year Warranty
- Junction Box Included With Fixture

Technical Specifications

Electrical:

- Voltage: 120VAC
- Wattage: 10W
- Power Factor: >0.90
- Efficacy: Up to 70 LM/W

Mechanical:

- Up to 9 AWG18 Wires
- Die-Cast Aluminum With White Powder Coat Finish
- Clear Glass Lens
- Junction Box Rated Up to 9 AWG18 Wires
- Type IC Rated: Approved For Direct Contact With Insulation
- Operating Temperature: 104°F
- Air-Tight And Type IC Rated: No Housing Required
- Damp Location Approved
- 5-Year Warranty

Lighting:

- Multi CCT (Selectable Switch On The Back Of The Driver)
- Dimming: Dimmable down to 10% Using Standard TRIAC LED dimmer
- Total lumens: 700LM
- Color Temperature: 2700K/3000K/3500K/4000K/5000K
- Color Rendering index: >90
- Beam Angle: 10°
- Lifespan: 50,000 Hrs.

Applications:

- Ideal for New as well as old residential and commercial constructions.

Other Models:

- 7W | 490LM | LRD-10W-MCT5-3WTRPH-WH/BK

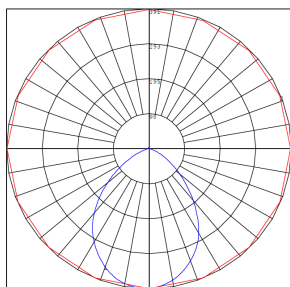
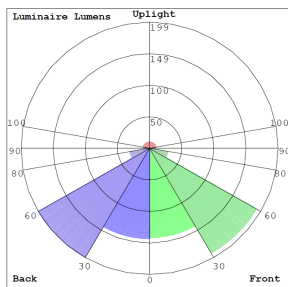


Phone: (877) 805-2252 | Fax: (877) 805-2252
www.westgatemfg.com

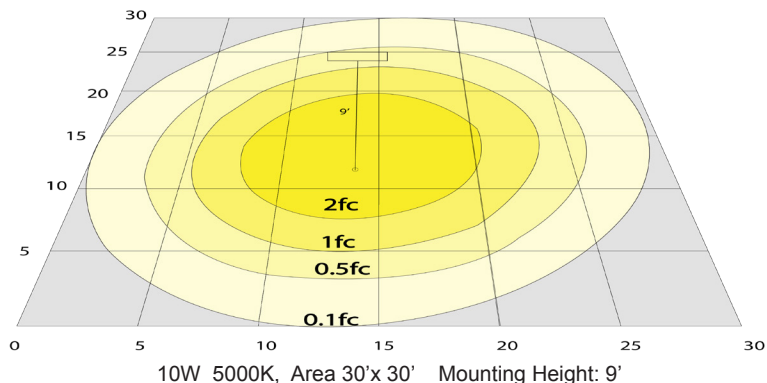


WG-ZY-Z4-2Z

Photometrics: LRD-10W-MCT5-3WTRPH



BUG Rating: B1-U2-G0



Other Views:



LRD-WTR3PH-WH



LRD-EGN-10W-MCT5-D



LRD-10W-MCT5-3WTRPH-WH



LRD-WTR3PH-BK



LRD-EGN-10W-MCT5-D



LRD-10W-MCT5-3WTRPH-BK

Performance Table: LRD-7W-MCT5-3WTR

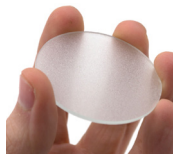
| MODEL NO. | Wattage | Voltage | Lumens | Color Temp. | BUG Rating | LPW |
|---------------------|---------|---------|--------|-------------|------------|-----|
| LRD-10W-MCT5-3WTRPH | 10W | 120V | 700LM | 2700K | B1-U2-G0 | 70 |
| | | | | 3000K | | |
| | | | | 3500K | | |
| | | | | 4000K | | |
| | | | | 5000K | | |

Accessory:



Blank = No Option For Accessories
LRD-FGL = LRD SERIES FROSTED GUASS LENS

Accessory:



LRD-FGL

Sample Ordering

| Model | Wattage | Color Temp. | Size | Housing |
|--------------------------|---------|-------------|--------|---------|
| LRD | 10W | MCT5 | 3WTRPH | |
| WH = WHITE BK = BLACK | | | | |

