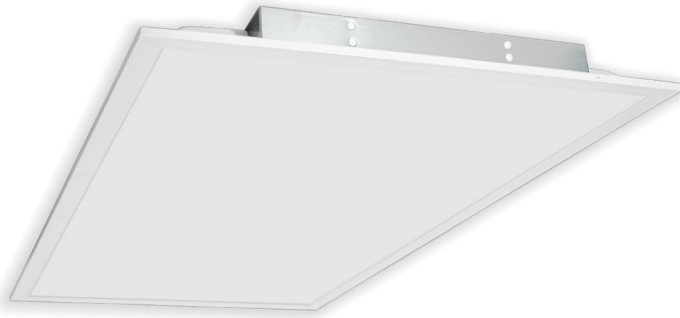


LPNP SERIES Commercial Lighting

LPNP-2X4-MCTP

PREMIUM FLAT PANELS, 125 LM/W, POWER AND WATTAGE SELECTABLE

MCTP Multi Color Temperature & Multi Power/Wattage (Selectable)



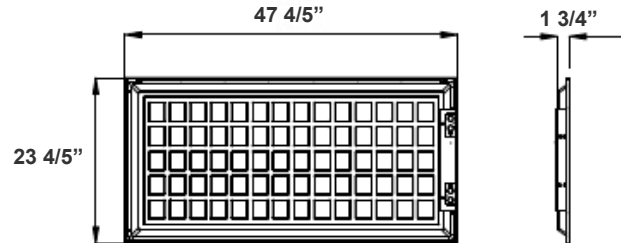
This indoor commercial LED Blacklit panel light is ideal for hotels, offices, retail outlets, restaurants, parking garages, storage rooms, conference rooms, education facilities, and more.

Customer Name: _____

Project Name: _____

Note: _____

Type: _____



47.8"(L) x 23 4/5"(H) x 1 3/4"(D)

Features

- Soft and Wide Light-Emitting
- 50,000 Hours Rated Life
- No infrared rays, No Ultraviolet Radiation, No Thermal Effect
- Earthquake H and Suspension Hooks Pre-Installed
- No Flickering, No Humming, No RF Interference
- Multi Color Temperature & Multi Power (Selectable Switch on Back of Fixture)

Technical Specifications

Electrical:

- Voltage: AC120V-277V 50/60Hz
- Power Factor: >0.90
- Wattage: 24W/32W/40W
- Efficacy: 125 LPW
- Fixture Operating Voltage: 36VDC
- Current (mA): 1050mA 36V DC
- Total Harmonic Distortion: ≤ 20 %

Mechanical:

- White Finish
- Audio-Jack Type Socket Pre-Installed on The Side of The Panel, See Motion Sensor Accessories
- Earthquake Hooks and Suspension Hooks Pre-Installed
- External Driver Mounted on Top
- Operating Temperature: -68°F~104°F
- Surge Protector: 1KV
- 5-Year Warranty

Lighting:

- Dimmable: 0~10V Dimming
- Total Lumens: 5000LM Max.
- Color Temperatures: 3500K/4000K/5000K
- Color Rendering Index: CRI ≥ 80
- Rated life: 50,000 hrs
-

Applications:

- Ideal for hotel, offices, retail outlets, restaurant, parking garages, storage room, conference room, education facilities and more.

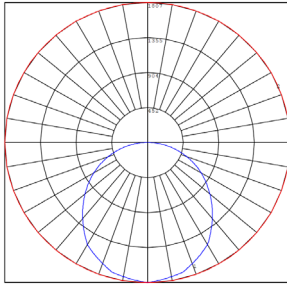
Other Models:

• 32W | 4000LM | LPNP-1X4-MCTP

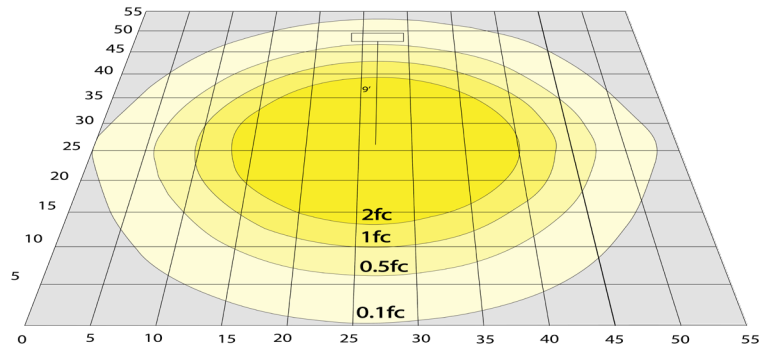
• 32W | 4000LM | LPNP-2X2-MCTP



Photometrics: LPNP-2X4-MCTP



BUG Rating: B2-U3-G2

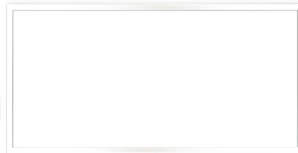


Area 55'x 55' Mounting Height: 9'

Other Views:



Side View



Front View



Back View



Pre-Installed Socket, Sensor is Not Incl. See Accessories

Performance Table: LPNP-2X4-MCTP-SR

MODEL NO.	Wattage	Voltage	Lumens	Color Temp.	BUG Rating	LPW
LPNP-2X4-MCTP	24W 32W 40W	120~277V	3000LM 4000LM 5000LM	3500K 4000K 5000K	B2-U2-G1	125

Sample Ordering

Model Size Watt/Color Temp.

LPNP - 2X4 - MCTP

Accessories:

- Blank = No Option For Accessories
- LPNG-RMK-2X4 = RECESSED MOUNTING FLANGE (FRAME-IN) KIT FOR INSTALLATION IN HARD SURFACES
- LPNG-SRFC-2X4 = SURFACE MOUNTING KIT FOR LPNG-2X4
- WEC-2DLH-22=DAYLIGHT HARVESTING
- WEC-2CPDR-3=MOTION SENSOR
- WEC-3RC=OPTIONAL REMOTE CONTROL
- WEC-2PR-28-AJ-WH = PIR SENSOR 1-PIN AUDIO JACK CONTACT 600W 40FT 120-277V 0-10V BI-LEVEL & RC (OPTIONAL RC WEC-3RC)
- WEC-2BT-28-AJ-WH = PIR SENSOR 1-PIN AUDIO JACK CONTACT 600W 40FT 120-277V 0-10V BI-LEVEL BLUETOOTH APP READY

Factory-Installed Options:

- Blank = No Option For Accessories
- OPT-EM-LP= EXTERNAL EMERGENCY BACKUP BATTERY
- OPT-FWH-63= 6FT 3-WIRE WHIP
- OPT-FWH-65= 6FT 5-WIRE WHIP
- OPT-FWH-66= 6FT 6-WIRE WHIP

Packaging Info:

	QTY	UOM	L (IN)	W (IN)	D (IN)	Weight (LBS)
Master Carton	4	Case	25.39	6.38	49.05	39.38

NO PARTIAL. MUST BUY IN MASTER PKG. QTY.

ACCESSORIES and MOUNTING KIT:



FACTORY-INSTALLED OPTIONS:

