

LPNG SERIES Commercial Lighting

LPNG-2X4-8KLM-MCTP4

MCT Multi Color Temperature (Selectable)

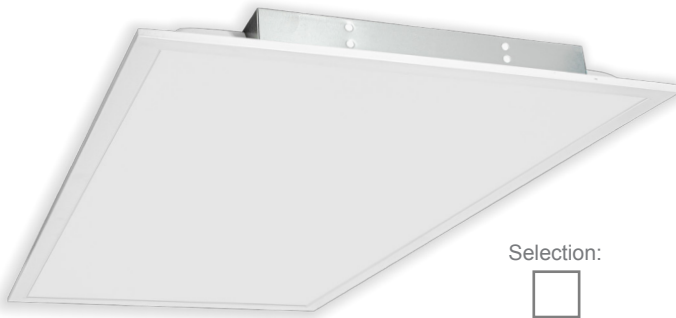
WESTGATE
THE FUTURE IS HERE...AND IT'S QUITE BRIGHT!

Customer Name: _____

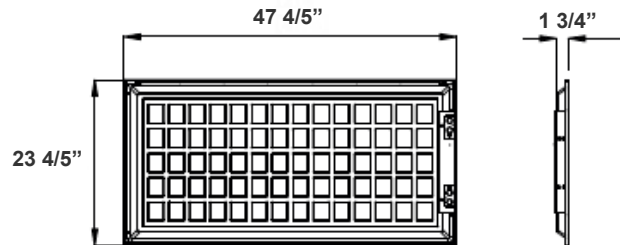
Project Name: _____

Note: _____

Type: _____



Selection:



47.8"(L) x 23 4/5"(H) x 1 3/4"(D)

This indoor commercial LED Blacklit panel light is ideal for hotels, offices, retail outlets, restaurants, parking garages, storage rooms, conference rooms, education facilities, and more.

Features

- Soft and Wide Light-Emitting
- No infrared rays, No Ultraviolet Radiation, No Thermal Effect
- 50,000 Hours Rated Life
- No flickering, No humming, No RF interference
- Earthquake hooks and Suspension Hooks Pre-Installed

Technical Specifications

Electrical:

- Voltage: AC120V-277V 50/60Hz
- Power Factor: >0.90
- Wattage: 58W/68W/80W
- Efficacy: 126 LPW
- Fixture Operating Voltage: 36VDC
- Current (mA): 1050mA 36V DC
- Total Harmonic Distortion: ≤ 20 %

Mechanical:

- White Finish
- Earthquake Hooks and Suspension Hooks pre-installed
- External driver mounted on top
- Operating Temperature: -68°F~104°F
- Surge Protector: 1KV
- Rated life: 50,000 hrs

Lighting:

- Dimmable: 0~10V Dimming
- Total Lumens: 10080LM Max.
- Color Temperatures: 3000K/3500K/4000K/5000K
- Color Rendering Index: CRI ≥ 80
- 5-Year Warranty

Applications:

- Ideal for hotel, offices, retail outlets, restaurant, parking garages, storage room, conference room, education facilities and more.

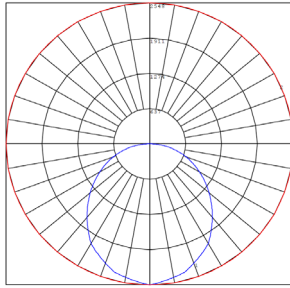


Phone: (877) 805-2252 | Fax: (877) 805-2252
www.westgatemfg.com |

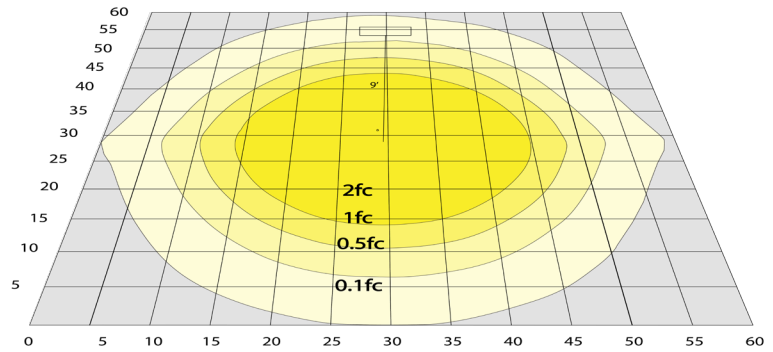


WG04172025

Photometrics: LPNG-2X4-8KLM-MCTP4



BUG Rating: B2-U3-G2

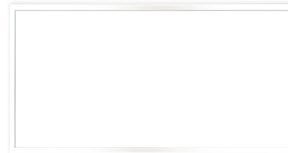


Area 60'x 60' Mounting Height: 9'

Other Views:



Side View



Front View



Back View

Performance Table: LPNG-2X4-8KLM-MCTP4

MODEL NO.	Wattage	Voltage	Lumens	Color Temp.	BUG Rating	LPW
LPNG-2X4-8KLM-MCTP4	58W 68W 80W	120~277V	7308LM 8568LM 10080LM	3000K 3500K 4000K 5000K	B2-U3-G2	126

Sample Ordering

Model	Size	Lumen	Color Temp.
LPNG	2X4	8KLM	MCTP4

Accessories:



Blank = No Option For Accessories
LPNG-RMK-2X4 = RECESSED MOUNTING FLANGE (FRAME-IN) KIT FOR INSTALLATION IN HARD SURFACES

LPNG-SRFC-2X4 = SURFACE MOUNTING KIT FOR LPNG-2X4

WEC-2DLH-22=DAYLIGHT HARVESTING

WEC-2CPDR-3=MOTION SENSOR

WEC-3RC=OPTIONAL REMOTE CONTROL

Factory-Installed Options:



Blank = No Option For Accessories

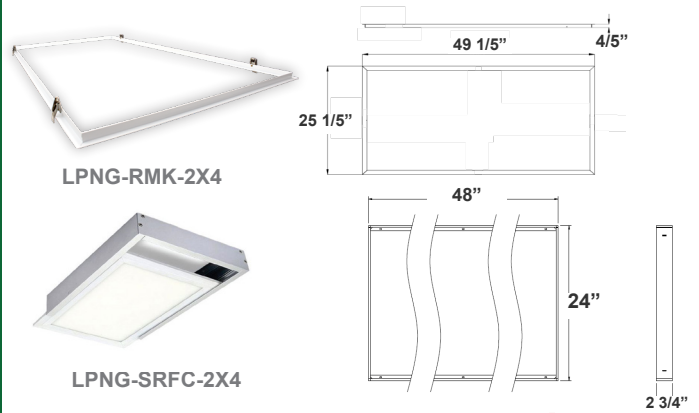
OPT-EM-LP= EXTERNAL EMERGENCY BACKUP BATTERY

OPT-FWH-63= 6FT 3-WIRE WHIP

OPT-FWH-65= 6FT 5-WIRE WHIP

OPT-FWH-66= 6FT 6-WIRE WHIP

ACCESSORIES and MOUNTING KIT:



FACTORY-INSTALLED OPTIONS:

