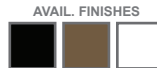
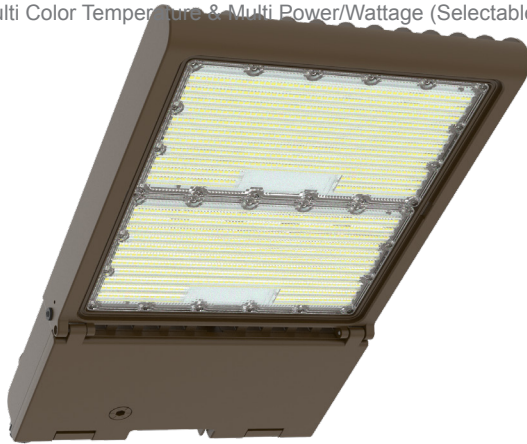


# LFXPRO SERIES Outdoor Lighting

## LFXPRO-XL-150-300W-MCTP

POWER & CCT ADJUSTABLE FLOOD/AREA LIGHT

**MCTP** Multi Color Temperature & Multi Power/Wattage (Selectable)



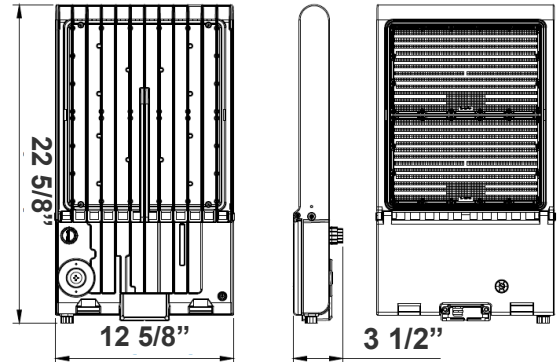
Ideal for general site lighting, alleys, loading docks, doorway, pathway, and parking areas.

Customer Name: \_\_\_\_\_

Project Name: \_\_\_\_\_

Note: \_\_\_\_\_

Type: \_\_\_\_\_



22 5/8"(L) x 12 5/8"(W) x 3 1/2"(H)

## Features

- LED Flood Light
- With snap-on & bolt mounting options for one-person installations.
- Select a mounting option (Sold separately)
- 70,000 Hours Rated Life
- 7-Year Warranty
- Optic Lens Type: III
- Multi-CCT & Multi-Power - The Switches are on the Bottom of the Fixture

## Technical Specifications

### Electrical:

- Voltage: 100-277V AC 50/60Hz
- Wattage: 150W/ 200W/ 240W/ 300W
- Power Factor: >0.9
- Output Current: 0.25A
- Efficacy: 125 LPW
- THD: <20%

### Mechanical:

- Housing: Die-cast Aluminum Housing with Powder Coat Finish (Dark Bronze)
- 10KV Lightning Surge Protection
- Operating Temperature: -40°F to 104°F
- IP Rating: IP65
- Suitable for Wet Locations
- Effective projected areas (EPA's) are:
  - Front = 0.38 square feet
  - Side = 0.30 square feet
  - Face = 1.05 square feet

### Lighting:

- Dimmable: 0~10V
- Solid State Lighting technology for long life, no Maintenance needed and High-Efficiency
- Lens Type: Optical TYPE III Lens, High Light Transmittance PC, Anti-UV and Flame Resistant
- Cord Type: 3.2' SJTW 18/3 AWG cable
- Total lumens: 38000LM Max.
- Color temperature: 3000K/ 4000K/ 5000K/ 5700K
- Color rendering index: CRI ≥ 70
- Beam Angle: 90°x 120°

### Applications:

- Ideal for general site lighting, alleys, loading docks, doorway, pathway and parking areas.
- Replace existing HID flood lights/ wall packs

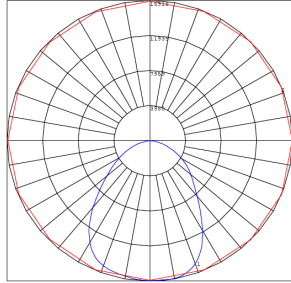
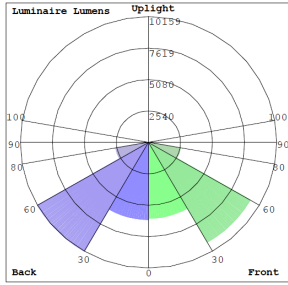
### Other Models:

- 150W | 19200LM | LFXPRO-LG-50-150W-MCTP

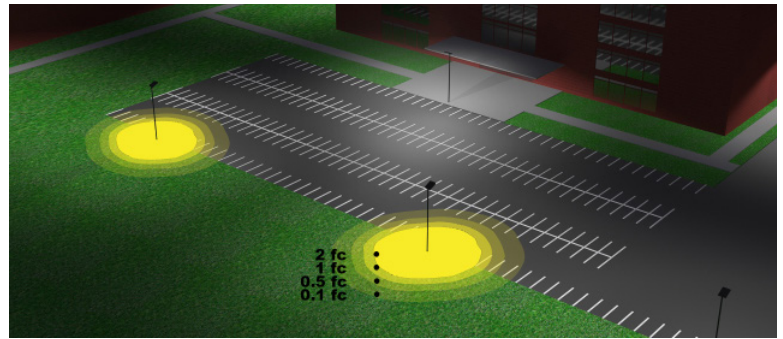


## Photometrics: LFXPRO-XL-150-300W-MCTP

TYPE III



BUG Rating: B4-U0-G1



Area 65'x 75' Mounting Height: 20'

## Other Views:



Side View



Front View



Back View

## Performance Table: LFXPRO-XL-150-300W-MCTP

MODEL NO.	Wattage	Voltage	Lumens	Color Temp.	BUG Rating	LPW
LFXPRO-XL-150-300W-MCTP	150W 200W 240W 300W	120~277V	18750LM 25000LM 30000LM 37500LM	3000K 4000K 5000K 5700K	B4-U0-G1	125

## EPA Rating:

Model	0.8	1.25	1.44	1.89	1.7	2.34
LFX-XL						



# Sample Ordering

**Model    Size    Min. Wattage Max. Wattage Color Temp.**

LFXPRO - XL - 150 - 300W - MCTP

## Accessories Options

Blank = No Option For Accessories

WEC-8RC = Optional Motion Sensor Remote Control

## Factory-Installed Options

Blank = No Option For Accessories

OPT-EM-OD2EXT = Emergency Battery Backup

OPT-3MPC = Microwave Photocell with a 1/2" threaded

OPT-SEN-3MR-3 = Programmable Microwave BI-Level Sensor

## Example:

1.LFXPRO-XL-150-300W-MCTP (For LFXPRO 300W MCTP fixture 120-277V)

2.LFXPRO-XL-150-300W-MCTP (For LFXPRO 300W MCTP fixture 120-277V)  
WEC-8RC (Remote Control)

## ACCESSORIES:



WEC-8RC

## Factory-Installed Options:



OPT-SEN-3MR-3



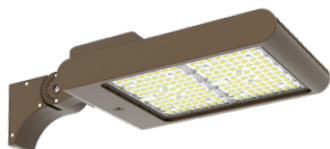
OPT-3MPC



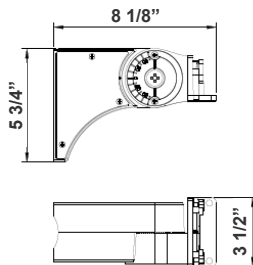
OPT-EM-OD2EXT



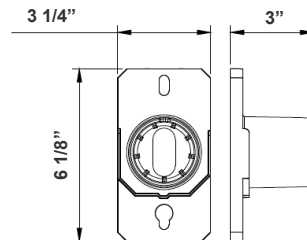
## Mounting Options:



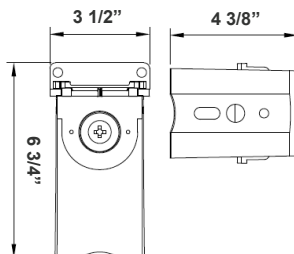
**LFX-ASA**  
Adjustable Straight Arm  
3 1/3" x 7 7/8"



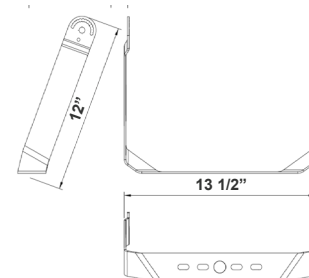
**LFX-SF + LFX-PASF**  
Pole Adapter for Slip Fitter  
6 1/8" x 3 1/4" x 3"



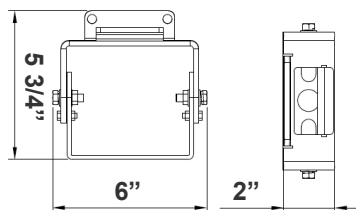
**LFX-EXT**  
Straight Arm  
3 1/3" x 6 3/4" x 4 3/8"



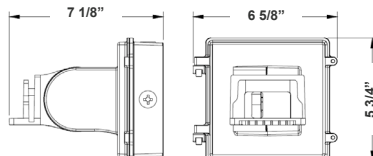
**LFX-TR-B**  
U Bracket  
13 1/2" x 12"



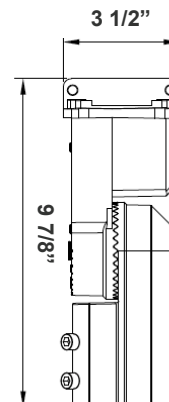
**LFX-YK**  
Yoke  
5 3/4" x 6" x 2"



**LFX-AWB**  
Adjustable Wall Junction Box  
7 1/8" x 6 5/8" x 5 3/4"



**LFX-SF**  
Slip Fitter  
3 1/3" x 7 7/8"



**Color Options:** LFXPRO-XL-150-300W-MCTP  
 Custom Color Available

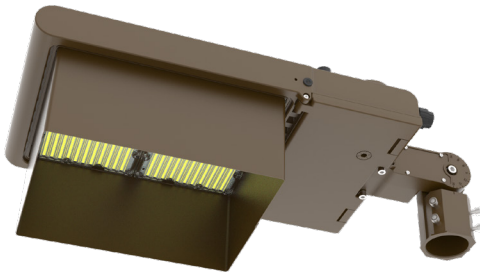
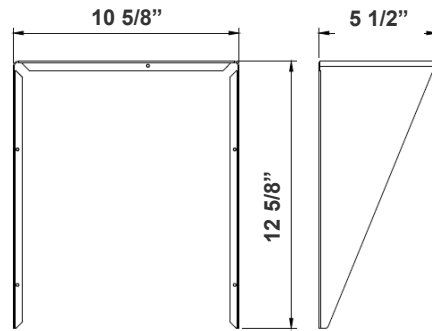
Black Silver White **Dark Bronze** Green Red Yellow  
 Default color



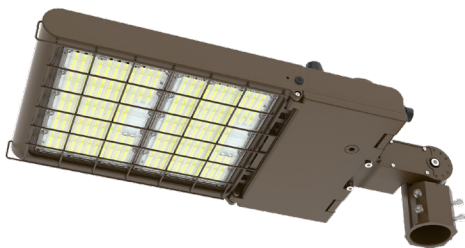
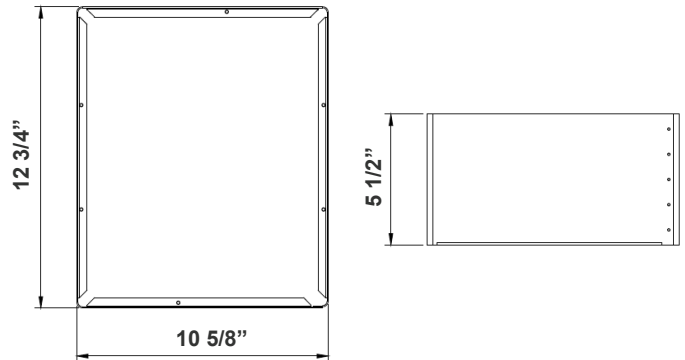
**Shroud & Wire Guard:**



**LF-SHROUD-B**  
 Shroud  
 12 5/8" x 10 5/8" x 5 1/2"  
 Can be painted



**LF-SHROUD-E**  
 Full-Glare Shroud  
 12 3/4" x 10 5/8" x 5 1/2"  
 Can be painted



**LFXPRO-WG-B**  
 Wire Guard  
 Can be painted



**COLOR CHART:** \* Choose from one of our Premium Colors with no set-up fee.

**Gloss:**



SILVER METALLIC  
70 GLOSS  
T357-GR105



SILVER METALLIC  
30 GLOSS  
T353-GR06



DARK RED 90  
GLOSS  
P009-RD02



INTERNATIONAL  
ORANGE 90  
GLOSS  
T009-OG26



SAFETY ORANGE  
90 GLOSS  
T009-OG01



YELLOW 90  
GLOSS  
T009-YL14



YELLOW 90  
GLOSS  
T009-YL01



TRAFFIC GREEN  
70 GLOSS  
T007-GN16



GREEN 70 GLOSS  
T007-GN13



GREEN 60 GLOSS  
C006-GN03



BLUE 90 GLOSS  
T009-BL01



DARK BLUE 80  
GLOSS  
T008-BL20



RAL 8028 TERRA  
BROWN 90 GLOSS  
C209-BR358

**Hammer:**



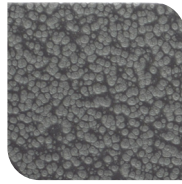
WHITE HAMMER  
T013-WH09



BEIGE HAMMER  
T013-BG38



GREY HAMMER  
C013-GR08



SILVER  
HAMMERTONE  
T064-GR05



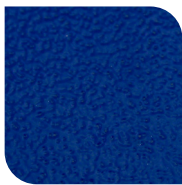
BLACK HAMMER  
T013-BK62



RED HAMMER  
T013-RD15



GREEN HAMMER  
T013-GN220



BLUE HAMMER  
T013-BL468



BRONZE HAMMER  
T012-BR161

**Texture:**



WHITE TEXTURE  
C031-WH120



FLINT GRAY  
TEXTURE  
T243-GR522



BLACK TEXTURE  
C241-BK109



RED TEXTURE  
T241-RD129



BLUE TEXTURE  
C241-BL544

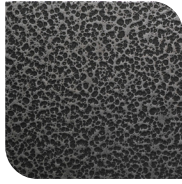


OIL RUBBED  
BRONZE TEXTURE  
T291-BR251

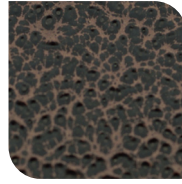
**Vein:**



BLACK/WHITE  
VEIN  
T075-WH34



SILVER VEIN  
T375-BK26



COPPER VEIN  
EXTERIOR  
T075-BK211



GOLD VEIN  
T375-BK10



COPPER VEIN  
T375-BK07

