



LF3-HL-230W-50K
LF3-HL-230W-40K
LF3-HL-230W-30K

LED HIGH LUMEN LF3 FLOOD LIGHTS

Ideal for general site lighting, alleys, loading docks, doorway, pathway, and parking areas.

ELECTRICAL SPECIFICATIONS:

- Voltage: 120~277V
- Wattage: 230W
- Efficacy: 130LM/W ~ 134LM/W
- Power factor: >0.90
- THD: <20%

HOUSING SPECIFICATIONS:

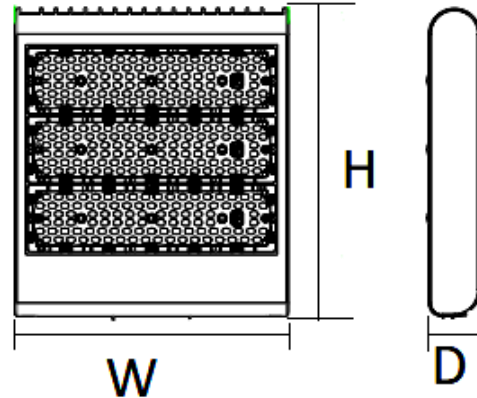
- Die-cast Aluminum housing with powder coat finish (Dark Bronze)
- Operating temperature: -40°F to 104°F
- Lifespan: 70,000 hr.
- IP Rating: IP65
- Effective projected areas (EPA's) are:
 Front = 0.38 square feet
 Side = 0.40 square feet
 Face = 1.45 square feet

CERTIFICATIONS:UL, DLC



DIMENSIONS:

18-1/2"(H) x 12-5/8"(W) x 3-1/2"(D)



MODEL	WATTS	VOLTAGE	LUMENS	COLOR TEMP
LF3-HL-230W-50K	230W	120~277V	31000LM	5000K
LF3-HL-230W-40K	230W	120~277V	31000LM	4000K
LF3-HL-230W-30K	230W	120~277V	30100LM	3000K

LIGHTING SPECIFICATIONS:

- Dimmable: 0~10V Dimming
- Lens: TYPE III TIR optic Lens
- LED: Philips Lumileds Luxeon 3030 High flux LED
- Solid state lighting technology for long life, no maintenance needed and high-efficiency
- Cord type: 6' SJTW 18/3 AWG cable
- Total lumens: 31000LM/30100LM
- Color temperature: 5000K/4000K/3000k
- Color rendering index: 82~84
- Beam Angle: 120°x90°

WARRANTY: 7 years



LF3-HL-230W-50K

LF3-HL-230W-40K

LF3-HL-230W-30K

LED HIGH LUMEN LF3 FLOOD LIGHTS

MOUNTING OPTIONS:

MODEL	WATTS	VOLTAGE	LUMENS	COLOR TEMP
LF3-HL-230W-50K	230W	120~277V	31000LM	5000K
LF3-HL-230W-40K	230W	120~277V	31000LM	4000K
LF3-HL-230W-30K	230W	120~277V	30100LM	3000K



LF3-HL-SF
(Slip fitter)

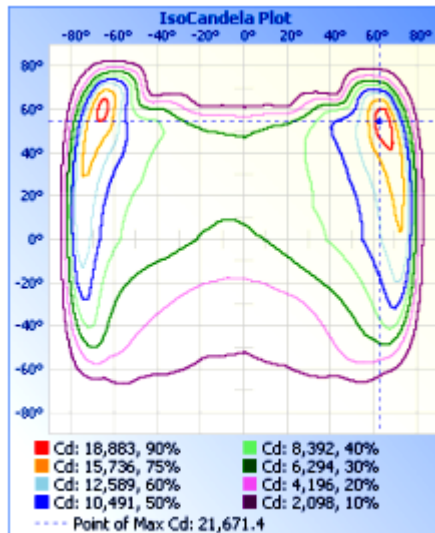
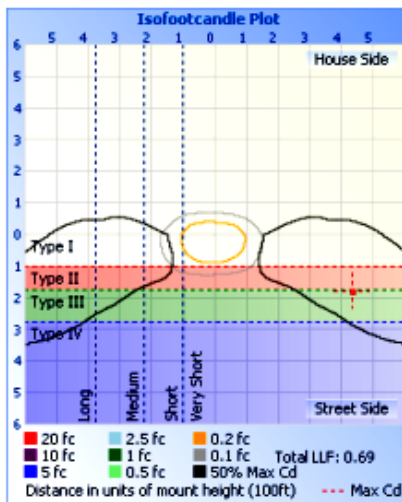
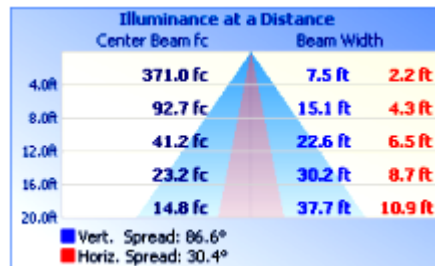
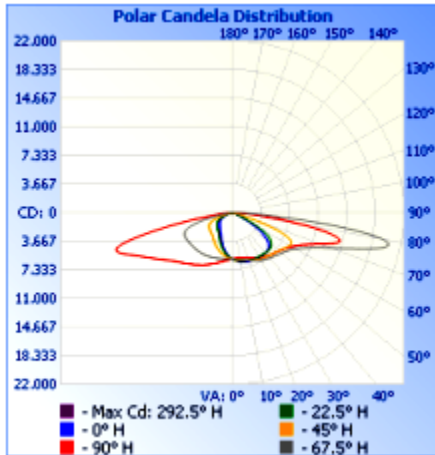


LF3-HL-YK
(Yoke)



LF3-HL-EXTARM
(Straight Arm)

PHOTOMETRIC CHARTS:



LF3-HL-230W-50K

LF3-HL-230W-40K

LF3-HL-230W-30K

LED HIGH LUMEN LF3 FLOOD LIGHTS

LENS TYPE OPTIONS:

MODEL	LENS TYPE	BEAM ANGLE	LENS PANELS PER FIXTURE
LF3-HL-TYPEII-150W/230W/300W	TYPEII	120°X90°	4
LF3-HL-TYPEIII-150W/230W/300W	TYPEIII	140°X80°	4
LF3-HL-TYPEIV-150W/230W/300W	TYPEIV	140°X100°	4

MODEL	WATTS	VOLTAGE	LUMENS	COLOR TEMP
LF3-HL-230W-50K	230W	120~277V	31000LM	5000K
LF3-HL-230W-40K	230W	120~277V	31000LM	4000K
LF3-HL-230W-30K	230W	120~277V	30100LM	3000K

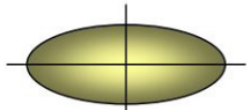
LENS TYPE SPECIFICATIONS:

- Optical PC Precision lenses designed for Westgate LF3 Series Flood Lights
- these lenses are replaceable by the factory or field replaced by installers

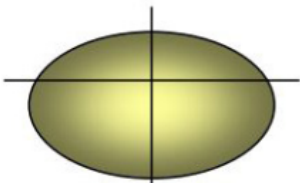
LENS TYPES EXPLAINED

SELECTING THE BEST DISTRIBUTION TYPE FOR YOUR OUTDOOR PROJECT

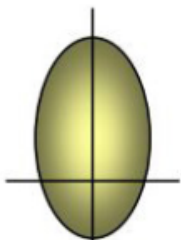
“Distribution Type” defines how far forward of the luminaire (i.e., on the StreetSide) the effective output reaches.



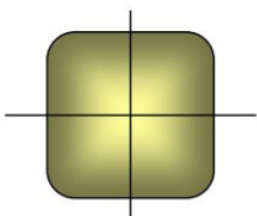
Type 2 is still linear but wider in the front to accommodate 4 lane roadways, or wider drive lanes.



Type 3 (commonly known as a “Bat-Wing”) is suitable for perimeters, often where other interior pole placements fill the site



Type 4 (commonly known as a “Forward Throw” or Asymmetric) is best along perimeters where spill light is a concern or there are no place to add poles within a site.



Type 5 – is available in a round or square pattern. Best suited for interior areas within a site or on the median of 4-6 lane roadways.

