

LCEU SERIES

COMMERCIAL LIGHTING

LCEU-8-30K-WH

LCEU-8-30K-BK

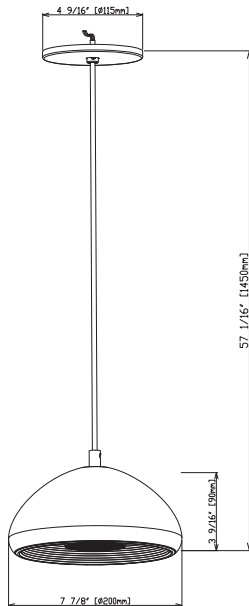
LCEU-8-30K-CU



White

Black

Copper



Technical Drawing: 7 7/8" (D) x 4 9/16" (W) x 57 1/16" (H)

EU-style pendant luminaire featuring an indirect light source that delivers soft, glare-free illumination. Designed to enhance visual comfort, it creates a warm ambient glow ideal for residential, hospitality, and commercial interior applications.

Customer Name: _____

Project Name: _____

Note: _____

Type: _____

FEATURES:

- Clean, round design complements a wide range of interior environments.
- Soft, diffused light creates subtle ripple effects, enhancing ambiance and decorative appeal.
- Customizable housing colors to suit individual design preferences.
- Quick installation with surface-mounted pendant bracket.
- Integrated flicker-free driver for stable illumination.
- Compatible with TRIAC dimming systems.

SPECIFICATIONS:

ELECTRICAL:

- Input voltage: 120V AC, 50/60Hz
- Wattage selectable: 8W
- Dimming: TRIAC dimming at 120V
- Total harmonic distortion (THD): <20%

MECHANICAL:

- Housing material: Metal
- Lens material: PC (polycarbonate)
- Decorative cylindrical architectural design
- Finish options:
 - White exterior with gold interior
 - Black exterior with copper interior
 - Copper exterior with white interior
- 5-year warranty
- IP20, Indoor Only

LIGHTING:

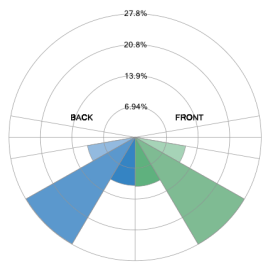
- Total Lumens: 395/220/650LM
- Optical design: Diffused indirect light with reflective interior surface
- Efficacy: 49/27/81 LM/W
- Selectable CCT: 3000K
- CRI: ≥80
- Operating Temperature: -4°F to 104°F
- Beam angle: 115°
- Integrated LED light source
- 50,000-hour rated LED life

APPLICATIONS:

- EU pendant luminaires with indirect light sources are designed to deliver soft, ambient illumination by reflecting light off ceilings and surrounding surfaces. This approach minimizes glare while enhancing visual comfort, making them ideal for residential, hospitality, and commercial environments such as dining areas, lounges, offices, and reception spaces. Their architectural design supports both functional lighting and decorative appeal, creating a warm, inviting atmosphere.

PHOTOMETRICS

BUG rating



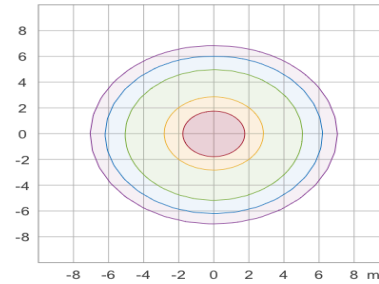
Rating: B0 U0 G0

Forward Light		
Low (0-30°)	26.58	11.1%
Medium (30-60°)	66.76	27.8%
High (60-80°)	27.17	11.3%
Very High (80-90°)	0.9533	0.396%
Back Light		
Low (0-30°)	26.07	10.8%
Medium (30-60°)	66.56	27.7%
High (60-80°)	25.59	10.6%
Very High (80-90°)	0.8165	0.340%
Uplight		
Low (90-100°)	0	0%
High (100-180°)	0	0%
Total		
Sum	240.5	100%

IESNA TM-15-07 Luminaire Classification System For Outdoor Luminaires

BUG Rating: B0-U0-G0

Iso-illuminance plot



50.0 %	4.05 lx
30.0 %	2.43 lx
10.0 %	0.809 lx
5.0 %	0.405 lx
3.0 %	0.243 lx

Peak illuminance: 8.09 lx
Mounting height: 3 m
Number of c-planes: 4

Area 8'x8'

PERFORMANCE TABLE

MODEL NO.	WATTAGE	VOLTAGE	LUMENS	COLOR TEMP.	BUG RATING	LPW
LCEU-8-30K-WH	8W	120V	395LM	3000K	B0-U0-G0	49
LCEU-8-30K-BK			220LM			27
LCEU-8-30K-CU			650LM			81