

# GPX SERIES Outdoor Lighting

GPX-18-60W-MCTP-SF  
POST DISK LIGHT WITH SLIP FITTER

**MCTP** Multi Color Temperature & Multi Power/Wattage (Selectable)

**WESTGATE**  
THE FUTURE IS HERE...AND IT'S QUITE BRIGHT!

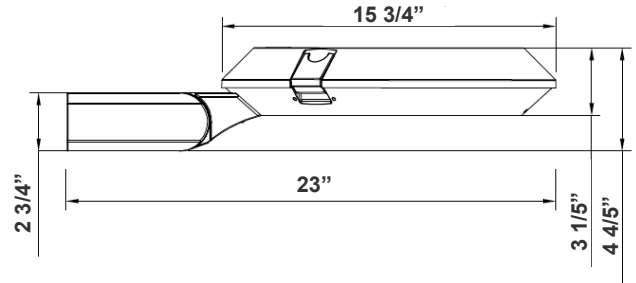
Customer Name: \_\_\_\_\_

Project Name: \_\_\_\_\_

Note: \_\_\_\_\_ Type: \_\_\_\_\_



SLIP FITTER



**23" (W) X 4 4/5" (H)**  
**Inside Diameter: 2 3/4"**

Ideal for airports, auto dealerships, corporate offices, education, government, healthcare, industrial warehouses, municipal parking, gas stations, convenient stores, recreation and public venues, restaurants, hospitality, retail and grocery stores.

## Features

- Aluminum Housing ,Outdoor Powder Coated
- 7-Year Warranty
- Multi CCT and Power: Selectable Switch Inside Of The Fixture

## Technical Specifications

### Electrical:

- Voltage: 100-277V AC 50/60Hz
- Wattage: 18W/30W/45W/60W
- Power Factor: 0.95
- Efficacy: 150LM/W

### Mechanical:

- Aluminum Housing , Outdoor Powder Coated
- Adjustable Slip Fitter Mount Fits on up to 2-3/8" Poles/ Arms
- Programmable Bi-Level Motion Sensor & Emergency Backup Options
- EPA Rating: 2.78 Square Feet
- Operating Temperature: -86°F~122°F
- IP Rating: IP66, Suitable for Wet Locations
- 7-Year Warranty

### Lighting:

- Multi CCT and Power: Selectable Switch Inside Of The Fixture
- Dimmable: 0~10V Dimming
- LED: SMD 3030
- Total Lumens: 9000LM Max.
- Color Temperature: 3000K/4000K/5000K
- Color Rendering index: >70
- Beam Angle: Type V (150° X 150°)
- Lifespan: 70000 Hrs.

### Applications:

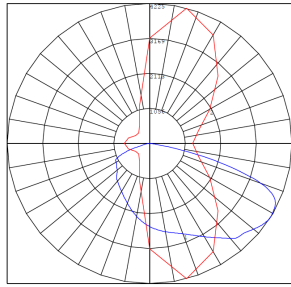
- Ideal For Garden, Amusement Park, Residential Quater , Industrial Park And Pedestrian street.



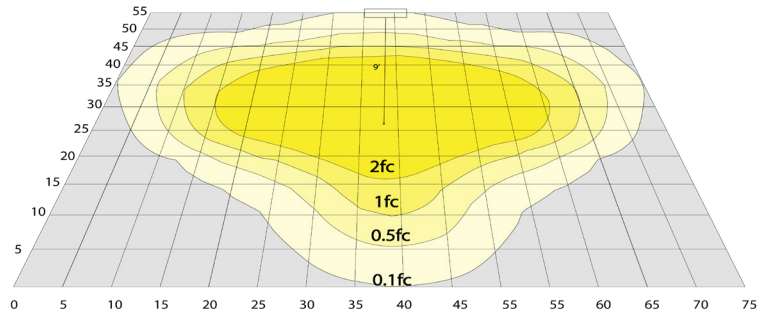
Phone: (877) 805-2252 | Fax: (877) 805-2252  
www.westgatemfg.com



## Photometrics: GPX-18-60W-MCTP-SF



BUD Rating: B1-U1-G0



20W 5000K, Area55'x 75' Mounting Height: 9'

## Other Views:



Slip Fitter



Lens View



Top View

## Performance Table: GPX-18-60W-MCTP-SF

MODEL NO.	Wattage	Voltage	Lumens	Color Temp.	BUG Rating	LPW
GPX-18-60W-MCTP-SF	18W 30W 45W 60W	120-277V	2700LM 4500LM 6750LM 9000LM	3000K 4000K 5000K	B1-U1-G0	150

## Sample Ordering

Model    Min. Watt    Max. Watt    Color Temp.    Mount

GPX - 18 - 60W - MCTP - SF

## Factory Installed Options:

Blank = No Option  
 OPT-EM-OD2INT = INTERNAL EMERGENCY BACK UP BATTERY  
 OPT-3MPC = MICROWAVE PHOTOCELL  
 OPT-CLR-95(BK/GR/SR/WH) = COLOR PAINT  
 OPT-SEN-3MR-3 = BI-LEVEL MICROWAVE SENSOR  
 WEC-8RC = REMOTE CONTROL  
 OPT-WP-480V = 480V OPTION  
 OPT-GPX-LENS-TYPE2S = FACTORY- INSTALLED TYPE 2 LENS  
 OPT-GPX-LENS-TYPE3S = FACTORY- INSTALLED TYPE 3 LENS  
 OPT-GPX-LENS-FL = FACTORY- INSTALLED FROSTED GLASS LENS

## FACTORY INSTALLED OPTIONS:



OPT-EM-OD2INT



OPT-3MPC



OPT-SEN-3MR-3



**COLOR CHART:** \* Choose from one of our Premium Colors with no set-up fee.

**Gloss:**



SILVER METALLIC  
70 GLOSS  
T357-GR105



SILVER METALLIC  
30 GLOSS  
T353-GR06



DARK RED 90  
GLOSS  
P009-RD02



INTERNATIONAL  
ORANGE 90  
GLOSS  
T009-OG26



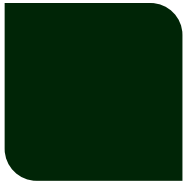
SAFETY ORANGE  
90 GLOSS  
T009-OG01



YELLOW 90  
GLOSS  
T009-YL14



YELLOW 90  
GLOSS  
T009-YL01



TRAFFIC GREEN  
70 GLOSS  
T007-GN16



GREEN 70 GLOSS  
T007-GN13



GREEN 60 GLOSS  
C006-GN03



BLUE 90 GLOSS  
T009-BL01



DARK BLUE 80  
GLOSS  
T008-BL20



RAL 8028 TERRA  
BROWN 90 GLOSS  
C209-BR358

**Hammer:**



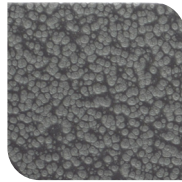
WHITE HAMMER  
T013-WH09



BEIGE HAMMER  
T013-BG38



GREY HAMMER  
C013-GR08



SILVER  
HAMMERTONE  
T064-GR05



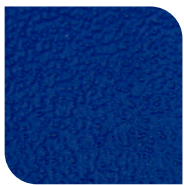
BLACK HAMMER  
T013-BK62



RED HAMMER  
T013-RD15



GREEN HAMMER  
T013-GN20



BLUE HAMMER  
T013-BL468



BRONZE HAMMER  
T012-BR161

**Texture:**



WHITE TEXTURE  
C031-WH120



FLINT GRAY  
TEXTURE  
T243-GR522



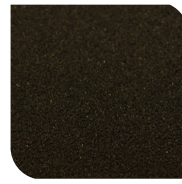
BLACK TEXTURE  
C241-BK109



RED TEXTURE  
T241-RD129



BLUE TEXTURE  
C241-BL544

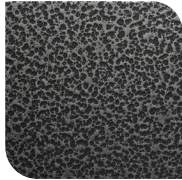


OIL RUBBED  
BRONZE TEXTURE  
T291-BR251

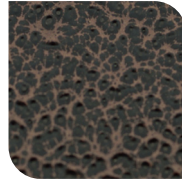
**Vein:**



BLACK/WHITE  
VEIN  
T075-WH34



SILVER VEIN  
T375-BK26



COPPER VEIN  
EXTERIOR  
T075-BK211



GOLD VEIN  
T375-BK10



COPPER VEIN  
T375-BK07

