

GPX SERIES Outdoor Lighting

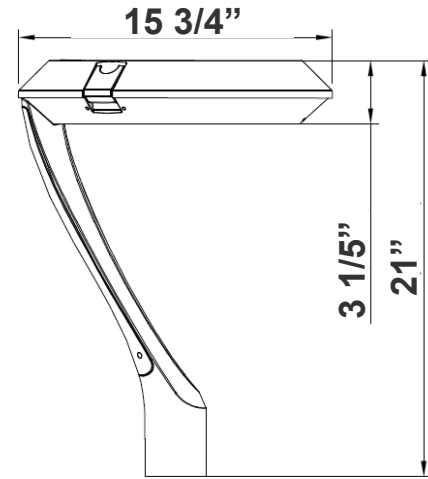
GPX-10W-SOLAR-A1
SPEC SERIES POWER & CCT- ADJUSTABLE SOLAR AREA/FLOOD LIGHT

WESTGATE
THE FUTURE IS HERE...AND IT'S QUITE BRIGHT!



SINGLE ARM
for 2-3/8 Poles

Customer Name: _____
Project Name: _____
Note: _____ | Type: _____



15 3/4" (W) X 21"(H)
Inside Diameter: 2 3/4"

Ideal for airports, auto dealerships, corporate offices, education, government, healthcare, industrial warehouses, municipal parking, gas stations, convenient stores, recreation and public venues, restaurants, hospitality, retail and grocery stores.

Features

- Aluminum Housing ,Outdoor Powder Coated
- 7-Year Warranty

Technical Specifications

Electrical:

- Wattage: 10W
- Power Factor: 0.95
- Efficacy: 170LM/W

Battery:

- Battery Charge Time To Full Level: 6 to 12 Hours Depending On The Sunlight Quality, See The Map On Page 3
- Battery Type: LiFePO4
- Battery Life: More Than 2000 Cycles (2000/365days=5.47 Years) With Overcharge and Over-Discharge Protection
- Operation On Full Charge: 10 hrs. Depending On The Sunlight Quality, See The Map On Page 3

Mechanical:

- Aluminum Housing , Outdoor Powder Coated
- Single Arm for 2-3/8 "Poles
- Programmable Bi-Level Motion Sensor & Emergency Backup Options
- Operating Temperature: -86°F~122°F
- IP Rating: IP66, Suitable for Wet Locations
- 7-Year Warranty

Lighting:

- LED: SMD 3030
- Total Lumens: 1700LM
- Color Temperature: 3000K/4000K/5000K
- Color Rendering index: >70
- Beam Angle: Type V (150° X 150°)
- Lifespan: 70000 Hrs.

Applications:

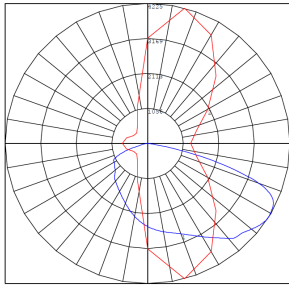
- Ideal For Garden, Amusement Park, Residential Quater , Industrial Park And Pedestrian street.



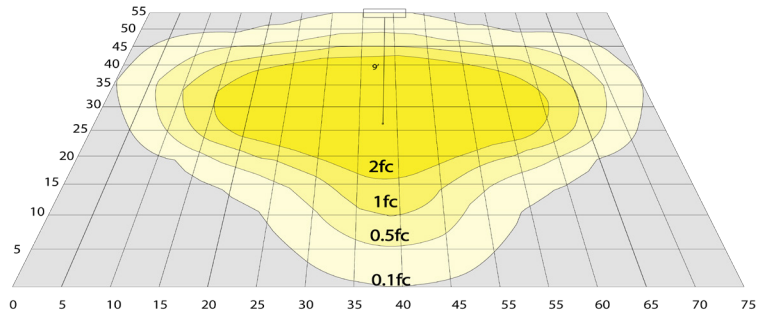
See the remote instruction on page 3



Photometrics: GPX-10W-SOLAR-A1



BUD Rating: B1-U1-G0



20W 5000K, Area55'x 75' Mounting Height: 9'

Other Views:



Single Arm Mount



Lens View



Top View

Performance Table: GPX-10W-SOLAR-A1

MODEL NO.	Wattage	Lumens	Color Temp.	BUG Rating	LPW
GPX-10W-SOLAR-A1	10W	1700LM	3000K 4000K 5000K	B1-U1-G0	170

Sample Ordering

Model	Max. Watt	Battery	Mount
GPX	10W	SOLAR	A1

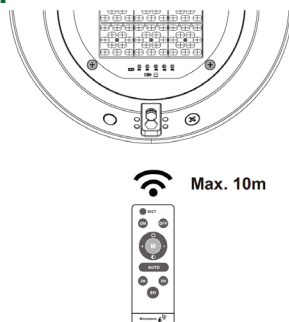
Factory Installed Options:

- Blank = No Option
- OPT-EM-OD2INT = INTERNAL EMERGENCY BACK UP BATTERY
- OPT-3MPC = MICROWAVE PHOTOCELL
- OPT-CLR-95(BK/GR/SR/WH) = COLOR PAINT
- OPT-SEN-3MR-3 = BI-LEVEL MICROWAVE SENSOR
- WEC-8RC = REMOTE CONTROL
- OPT-WP-480V = 480V OPTION
- OPT-GPX-LENS-TYPE2S = FACTORY- INSTALLED TYPE 2 LENS
- OPT-GPX-LENS-TYPE3S = FACTORY- INSTALLED TYPE 3 LENS
- OPT-GPX-LENS-FL = FACTORY- INSTALLED FROSTED GLASS LENS

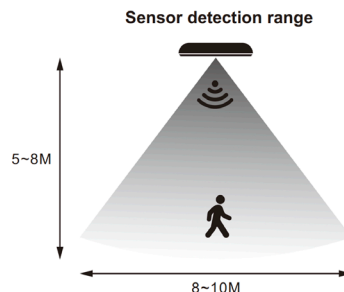
FACTORY INSTALLED OPTIONS:



Remote Control Operation:



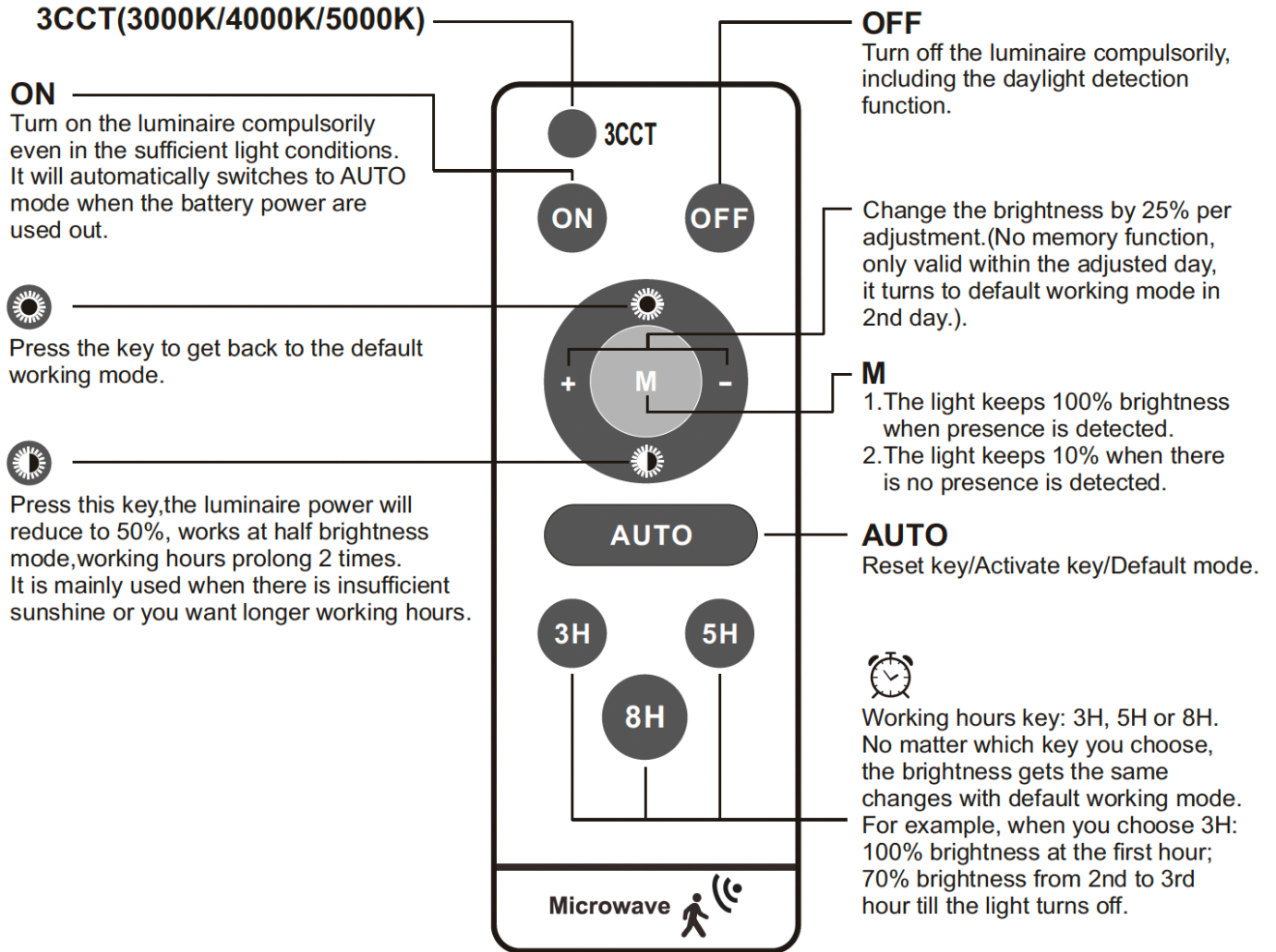
* Point the remote control at the fixture



! The factory default working model is "AUTO" without motion sensor function, need to press "M" on remote control to switch to motion sensor mode.

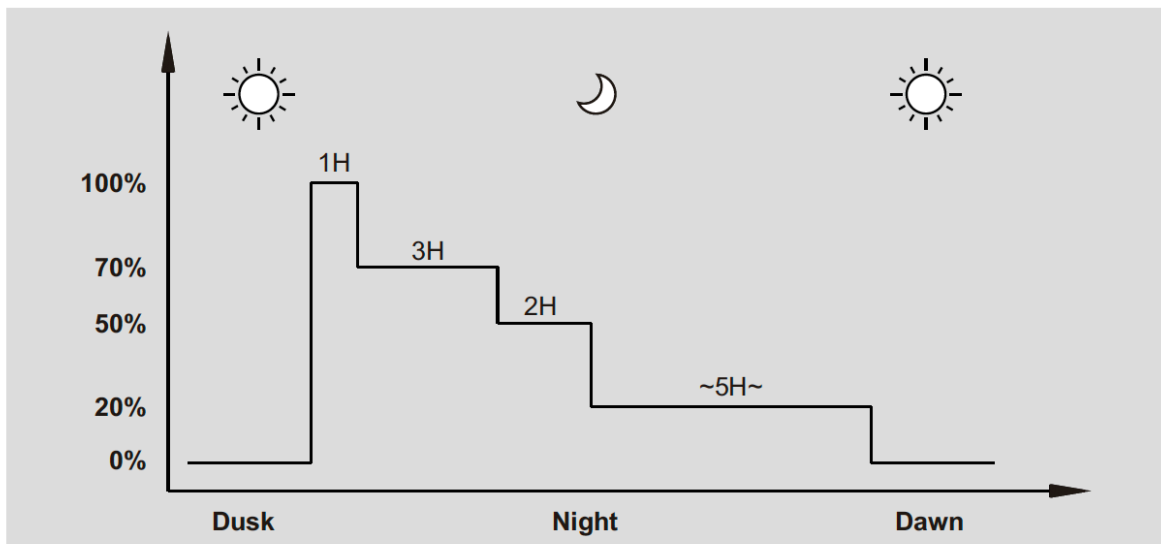


Remote Control Operation:



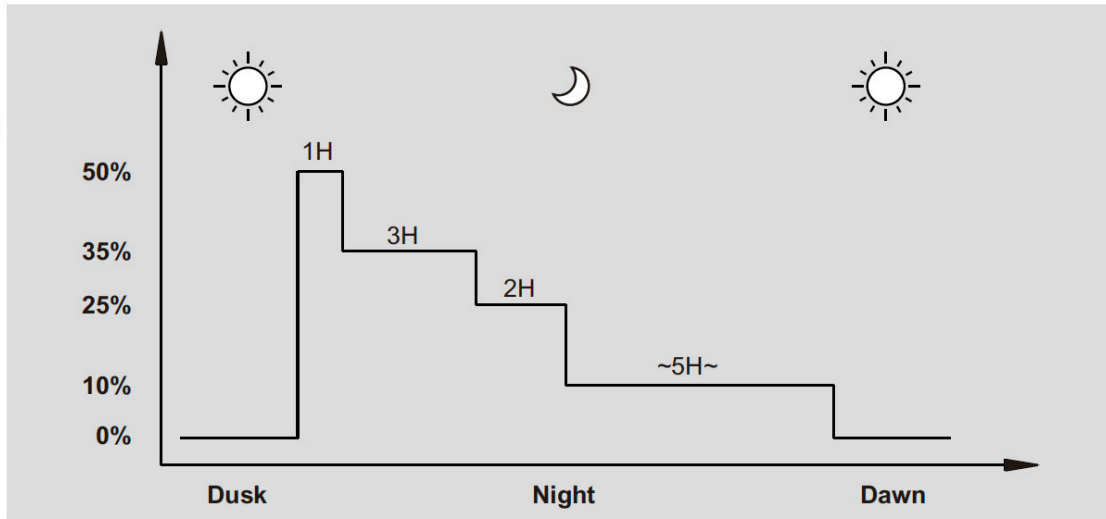
Auto /

Default Working Mode

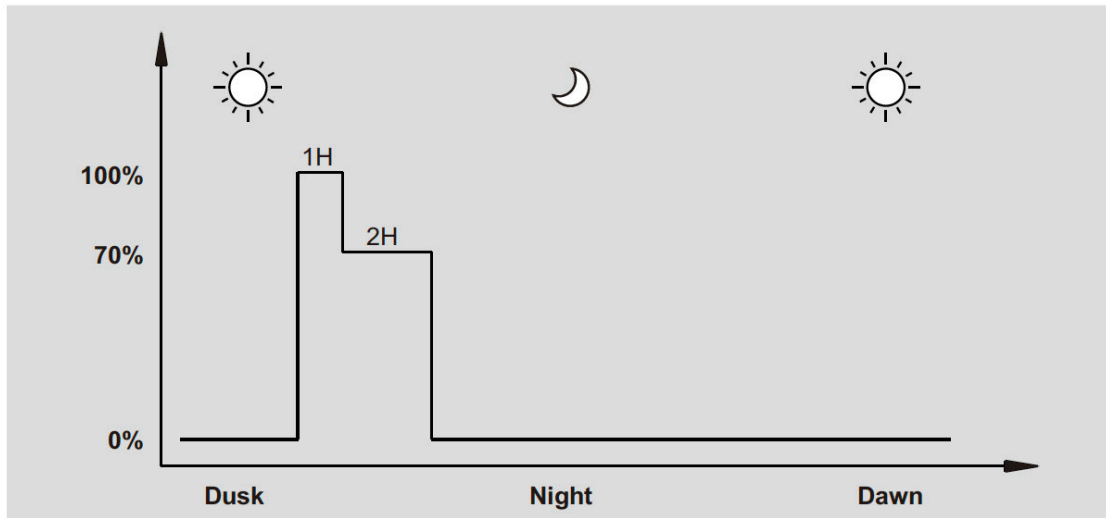
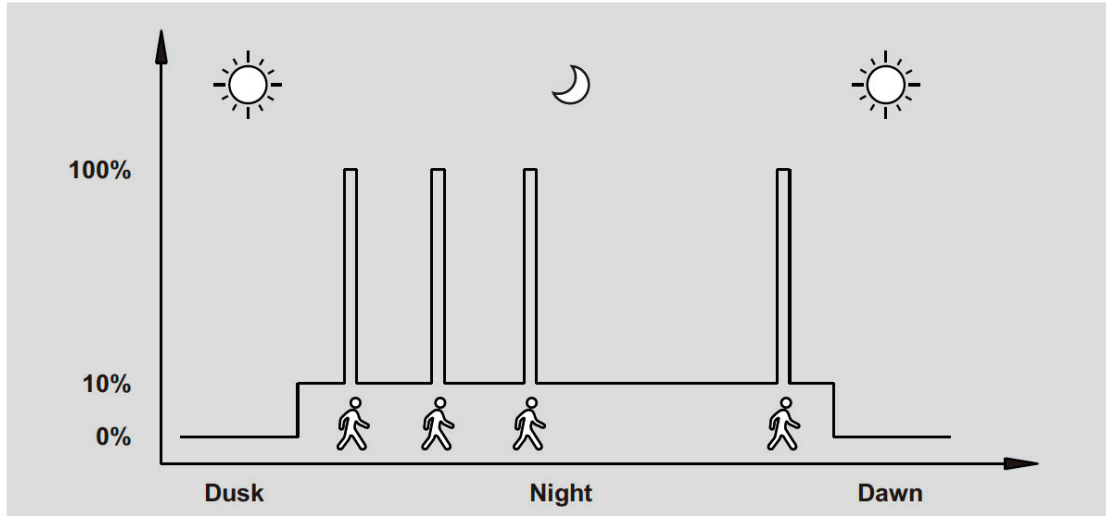




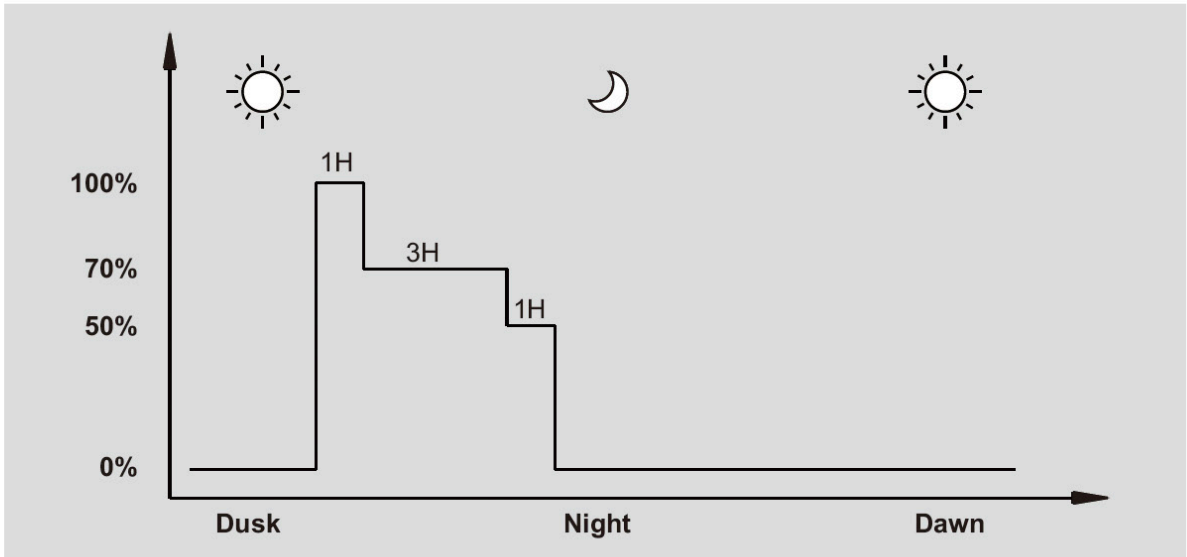
Half brightness mode



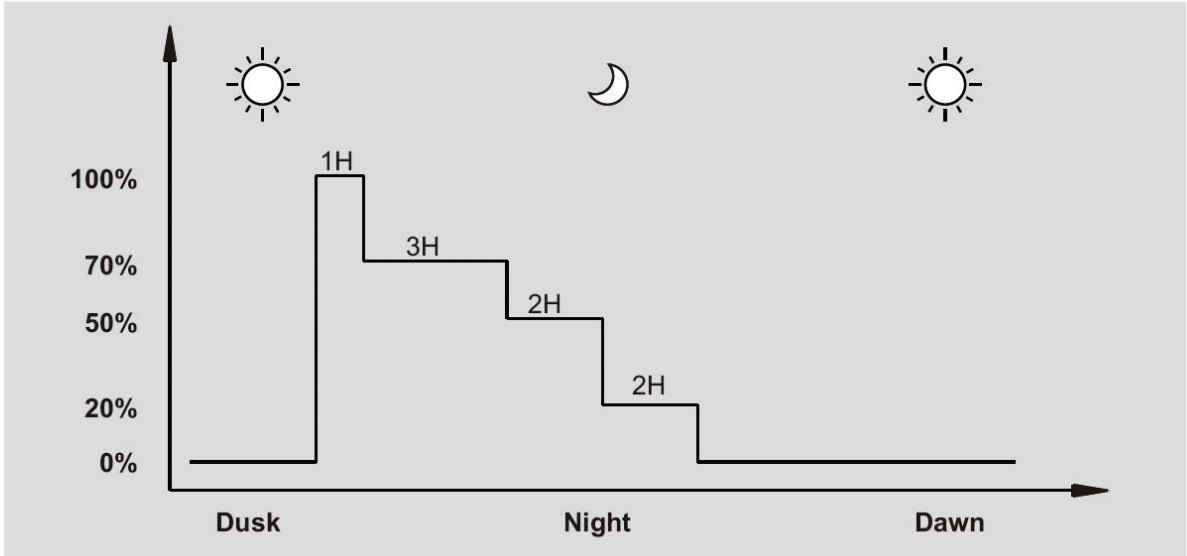
Motion detection



5H



8H



EPA Rating: DAB-SOL-A16-50W-MCT (Solar Panel Included)

Assumptions: Panel 16.5"×12.0" @ 35.0°, Luminaire face ≈ 10.0"×8.0"; Cd=1.2.

Mounting Height	EPA (sq. ft.) – combined panel + fixture
10 ft	2.02
12 ft	2.02
14 ft	2.02
16 ft	2.02
18 ft	2.02
20 ft	2.02

Note: EPA is independent of mounting height; values repeat across heights. Update will be issued if exact bell face W×H differs from placeholders.

EPA Rating: GPX-10W-SOLAR-A1

Fixture Dimensions: 15.75" W × 21" H × 3.2" D

Mounting Height	EPA (sq. ft.)
10 ft	2.76
12 ft	2.76
14 ft	2.76
16 ft	2.76
18 ft	2.76
20 ft	2.76



COLOR CHART: * Choose from one of our Premium Colors with no set-up fee.

Gloss:



SILVER METALLIC
70 GLOSS
T357-GR105



SILVER METALLIC
30 GLOSS
T353-GR06



DARK RED 90
GLOSS
P009-RD02



INTERNATIONAL
ORANGE 90
GLOSS
T009-OG26



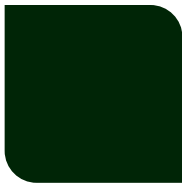
SAFETY ORANGE
90 GLOSS
T009-OG01



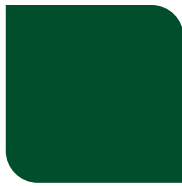
YELLOW 90
GLOSS
T009-YL14



YELLOW 90
GLOSS
T009-YL01



TRAFFIC GREEN
70 GLOSS
T007-GN16



GREEN 70 GLOSS
T007-GN13



GREEN 60 GLOSS
C006-GN03



BLUE 90 GLOSS
T009-BL01



DARK BLUE 80
GLOSS
T008-BL20



RAL 8028 TERRA
BROWN 90 GLOSS
C209-BR358

Hammer:



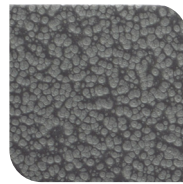
WHITE HAMMER
T013-WH09



BEIGE HAMMER
T013-BG38



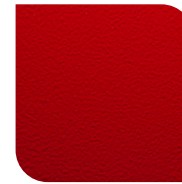
GREY HAMMER
C013-GR08



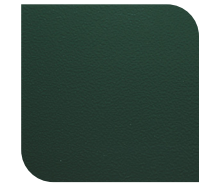
SILVER
HAMMERTONE
T064-GR05



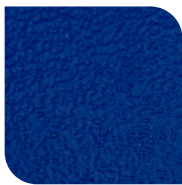
BLACK HAMMER
T013-BK62



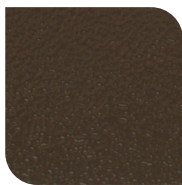
RED HAMMER
T013-RD15



GREEN HAMMER
T013-GN20



BLUE HAMMER
T013-BL468



BRONZE HAMMER
T012-BR161

Texture:



WHITE TEXTURE
C031-WH120



FLINT GRAY
TEXTURE
T243-GR522



BLACK TEXTURE
C241-BK109



RED TEXTURE
T241-RD129

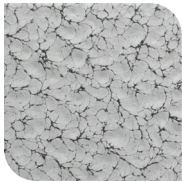


BLUE TEXTURE
C241-BL544

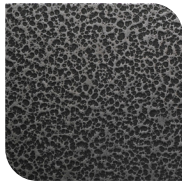


OIL RUBBED
BRONZE TEXTURE
T291-BR251

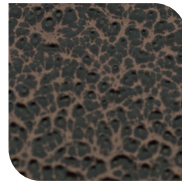
Vein:



BLACK/WHITE
VEIN
T075-WH34



SILVER VEIN
T375-BK26



COPPER VEIN
EXTERIOR
T075-BK211



GOLD VEIN
T375-BK10



COPPER VEIN
T375-BK07

