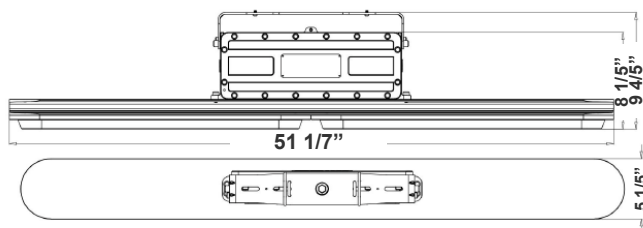


EXPL-80W-50K
HAZARDOUS LOCATION FLOOD/HIGHBAY LIGHTS

Customer Name: _____

Project Name: _____

Note: _____ | Type: _____



9 4/5"(H) x 51 1/7"(W) x 5 1/5"(D)

Ideal for Stadium lighting, Sports fields, parking lots, docks, railway and container yards, Architectural lighting, Industrial and commercial exterior lighting, trade shows, exhibitions

Features

- UL ANSI/UL 844, "Luminaires for Use in Hazardous (Classified) Locations."
- UL E503444 Class I, Division 2, Groups A, B, C and D, Luminaires for HazLoc
- 7-year Warranty
- Lens: Clear Glass
- Aluminum Alloy Housing
- LED: Samsung / SMD 2835(0.5W)

Technical Specifications

Electrical:

- Voltage: 120~277V AC 60Hz
- Wattage: 80W
- Power Factor: >0.90
- THD: ≤20%
- Efficacy: 135LPW

Mechanical:

- Aluminum Alloy Housing
- Gray Finish
- 3/4" Threaded KO On Top
- Operating Temperature: -40°F to 176°F
- IP Rating: IP66, Suitable for Wet Locations
- 7-year Warranty

Lighting:

- Lens: Clear Glass
- LED: Samsung / SMD 2835(0.5W)
- Total lumens: 10800LM
- Color Temperatures: 5000K
- Color Rendering Index: CRI ≥ 84
- Rated Life: 70,000 Hrs
- Beam Angle: 100°

Applications:

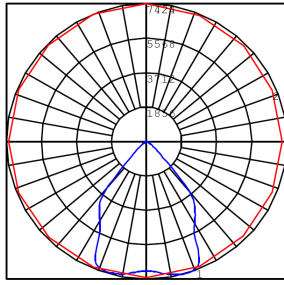
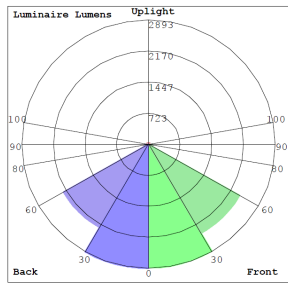
- Warehouse, Factory And Workshops;
- Petroleum and Petrochemical Area, And Gas Station;
- Power, Railway, Ship Port, Public Security, Fire Protection And Other Fields

Other Models:

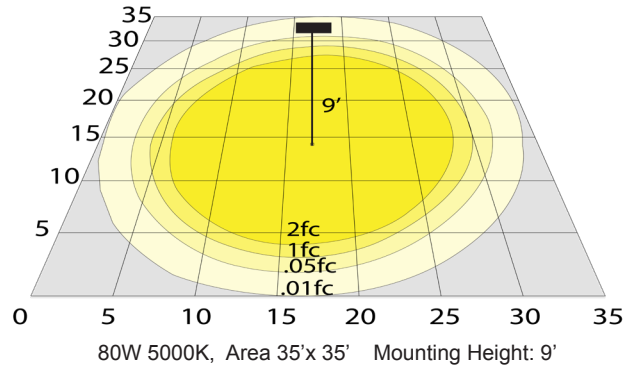
- 40W | 5400LM | EXPL-40W-50K
- 120W | 15600LM | EXPL-120W-50K



Photometrics: EXPL-80W-50K



BUG Rating: B4-U2-G0



80W 5000K, Area 35'x 35' Mounting Height: 9'

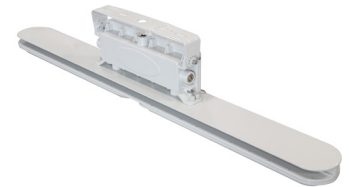
Other Views:



Side View



Lens View



Back View

Performance Table: EXPL-80W-50K

MODEL NO.	Wattage	Voltage	Lumens	Color Temp.	BUG Rating	LPW
EXPL-80W-50K	80W	120~277V	10800LM	5000K	B4-U2-G0	135

Sample Ordering

Model **Watt** **Color Temp.**

EXPL - 80W - 50K

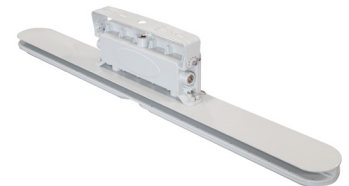
Other Model: EXPL-120W-50K



Side View



Lens View



Back View

