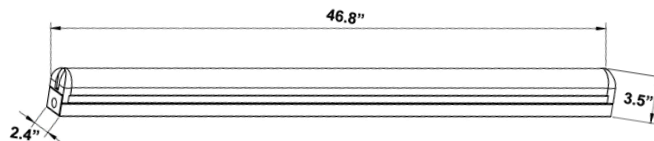




DIMENSIONS:

46.8"(L) x 2.4"(W) x 3.5"(H)



CSL-4FT-25W-50K-D
CSL-4FT-25W-40K-D

**LED ARCHITECTURAL ROUND SUSPENDED
COMMERCIAL LIGHTS (4FT.)**

Ideal for hotel, offices, retail outlets, restaurant, parking garages, storage room, conference room, education facilities and more.

ELECTRICAL SPECIFICATIONS:

- Voltage: 120-277VAC 50/60Hz
- Wattage: 25W
- Power factor: >0.95
- Efficacy: 120LM/W

HOUSING SPECIFICATIONS:

- High Lumen 4-Foot stairwell with Programmable Bi-Level Microwave Motion Sensor
- Metal housing, White powder coated
- Steel Thickness: 24 Gauge
- Operating temperature: -13°F ~ 104°F
- Lifespan: 50,000 Hrs.
- IP rating: IP20

CERTIFICATIONS: UL, DLC



MODEL	WATTS	VOLTAGE	LUMENS	COLOR TEMP
CSL-4FT-25W-50K-D	25W	120~277VAC	3000LM	5000K
CSL-4FT-25W-40K-D	25W	120~277VAC	3000LM	4000K



LLBH-OC-BL
(Included)



LLBH-OC-REMOTE
(Not Included)

MODEL	DESCRIPTION
LLBH-OC-BL	Bi-Level Microwave Dimming Motion Sensor adjustable with remote control, 120/277V 800/1200W max (Included)
LLBH-OC-REMOTE	Remote control for Bi-Level Motion Sensor (Not Included)

LIGHTING SPECIFICATIONS:

- Dimming: 0~10V dimmable
- Lens: Prismatic
- Total lumens: 3000LM
- Color temperature: 5000K/4000K
- Color rendering index: >80

WARRANTY: 5 years



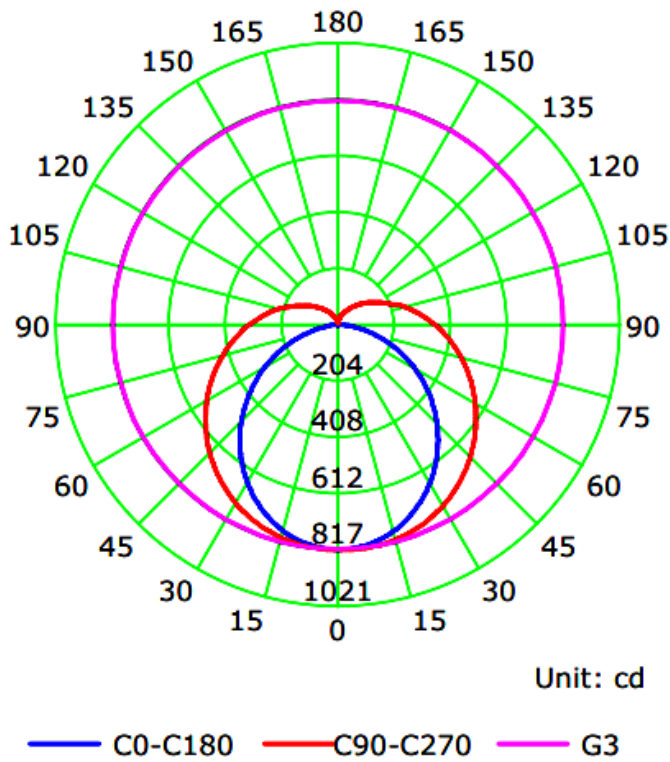
CSL-4FT-25W-50K-D
CSL-4FT-25W-40K-D

LED ARCHITECTURAL ROUND SUSPENDED COMMERCIAL LIGHTS (4FT.)

MODEL	WATTS	VOLTAGE	LUMENS	COLOR TEMP
CSL-4FT-25W-50K-D	25W	120~277VAC	3000LM	5000K
CSL-4FT-25W-40K-D	25W	120~277VAC	3000LM	4000K

PHOTOMETRICS CHARTS:

Luminous Intensity Distribution Curve



Illuminance at a Distance

