

CRLC SERIES

COMMERCIAL INDOOR LIGHTING

WESTGATE

THE FUTURE IS HERE...AND IT'S QUITE BRIGHT!

CRLC8-15W-MCT-D

CRLC8-15W-MCT-D-WH

8" LED COMMERCIAL RECESSED LIGHT

Customer Name: _____

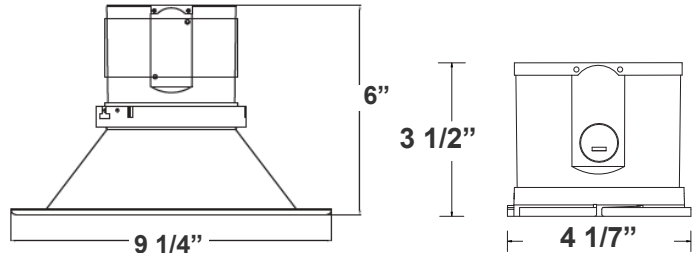
Project Name: _____

Note: _____

Type: _____



Selection:



Ideal for hotel, offices, retail outlets, restaurant, parking garages, conference room, education facilities and more.

9 1/4"(L) X 6" (H)

Features

- 8" Haze & White Finish TRIM
- MCT: The Switch Is On The Light Engine
- Mounting Options: Recessed
- 5-Year Warranty
- Lifespan: 50,000 hrs.

Technical Specifications

Electrical:

- Voltage: 120-277VAC
50/60Hz
- Wattage: 15W
- Power Factor: >0.90
- Efficacy: 85 LPW

Mechanical:

- 8" Haze & White Finish TRIM
- Mounting Options: Recessed
- Temperature Rating: Designed To Operate in Temperatures 113°F
- Housing Not Required. Two Spring Clips To Hold The Fixture In Place
- IC-Rated
- Suitable for Damp Locations
- 5-Year Warranty

Lighting:

- MCT: The Switch Is On The Light Engine
- Dimming: 0~10V Dimmable
- Total Lumens: 1275LM
- Color Temperature: 3000K/4000K/5000K
- Color Rendering index: >80
- Lifespan: 50,000 hrs.

Applications:

- Ideal for hotel, offices, retail outlets, restaurant, parking garages, conference room, education facilities and more.

Other Models:

- 20W | 1720LM | CRLC4-20W-MCT-A-D
- 20W | 1720LM | CRLC4-20W-MCT-A-D-WH

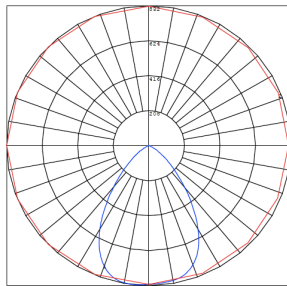
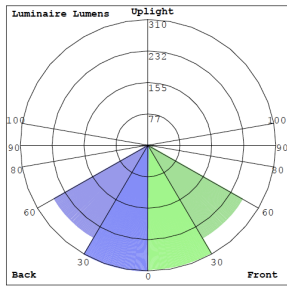


Phone: (877) 805-2252 | Fax: (877) 805-2252
www.westgatemfg.com

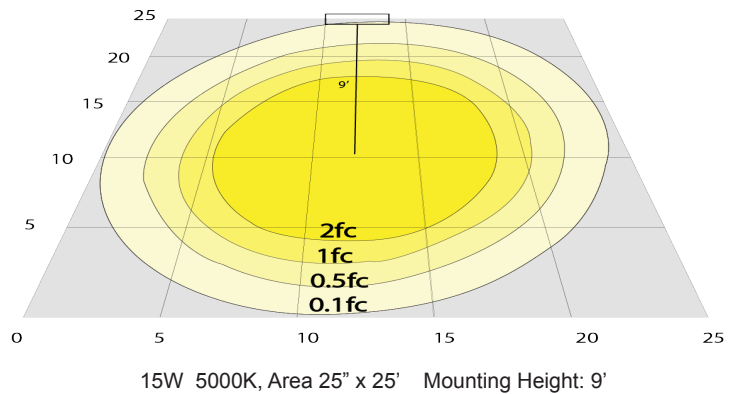


WG-Z7-2D-22

Photometrics: CRLC8-15W-MCT-D



BUG Rating: B1-U1-G0



15W 5000K, Area 25" x 25" Mounting Height: 9'

Other Views:

Hazel



CRLC-EGN-15W-MCT-D



CRLC-TRM-8



CRLC8-20W-MCT-D

White



CRLC-EGN-15W-MCT-D



CRLC-TRM-8-WH



CRLC8-20W-MCT-D-WH

Performance Table: CRLC8-15W-MCT-D

MODEL NO.	Wattage	Voltage	Lumens	Color Temp.	BUG Rating	LPW
CRLC8-15W-MCT-D	15W	120-277V	1275LM	3000K	B1-U1-G0	85
CRLC8-15W-MCT-D-WH				4000K 5000K		

Sample Ordering

Model	Watt	Dimming	Housing
CRLC8	15W	MCT	D
			Blank WH = WHITE

Accessory:

Blank = No Option For Accessories

CRLC-468-RIBH-JB = CRLC Series Mounting Plate With Brackets And J- Box 4/6/8 in

Factory-Installed Option:

Blank = No Option For Accessories

OPT-EM-CRLC = EXTERNAL EMERGENCY BACK UP BATTERY

Accessory:



CRLC-468-RIBH-JB
CRLC Series Mounting Plate With Brackets
And J- Box 4/6/8 in

Factory-Installed Option:



OPT-EM-CRLC
EXTERNAL EMERGENCY
BACK UP BATTERY

