

CMC SERIES

COMMERCIAL INDOOR LIGHTING

WESTGATE

THE FUTURE IS HERE...AND IT'S QUITE BRIGHT!

CMC12L-MCTP-D-BK

CMC12L-MCTP-D-WH

CMC12L-MCTP-D-SIL

12" COMMERCIAL CEILING CYLINDERS

MCTP Multi Color Temperature & Multi Power/Wattage (Selectable)

Customer Name: _____

Project Name: _____

Note: _____

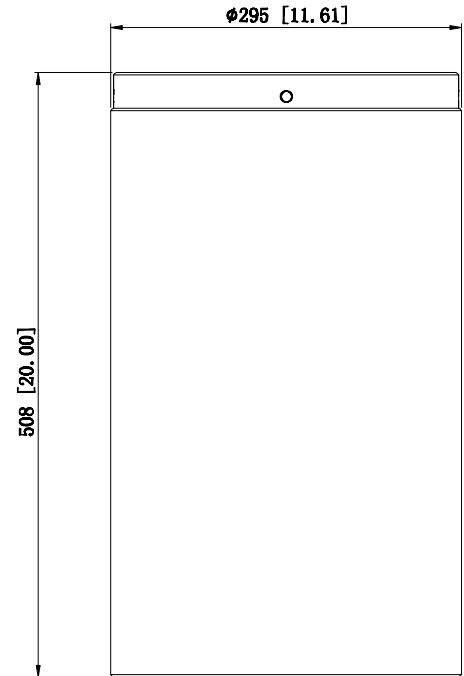
Type: _____



Avail Finishes:



12" Commercial ceiling cylinders with a 14" height, designed for high-performance illumination in commercial and architectural spaces. Ideal for applications requiring powerful downlighting with a clean, cylindrical form factor. Suitable for surface, pendant, or stem mounting options.



20" (H) X 11.61" (W)

Features

- Multi CCT: Selectable Multi-CCT & Power Switches on the back of the fixture
- 5-Year Warranty
- Aluminum Base and Glass Lens

Technical Specifications

Electrical:

- Voltage: 120-277V
- Power Factor: >0.90
- THD: <20%
- Wattage: 60W/80W/100W
- Efficacy: 125 LPW

Mechanical:

- Aluminum Housing & Glass Lens
- Swivel Rod Kit for Suspended Mounting Available
- Ambient Operating Temperature: -13°F to 113°F
- IP Rating: IP40 suitable for damp locations
- 5-Year Warranty

Lighting:

- Multi CCT & Power: Selectable Multi-CCT & Power Switches on
- the back of the fixture
- Dimming: 0-10V Dimming
- Total Lumens: 12500LM Max.
- Color Temperatures: 3000K/4000K/5000K
- Color Rendering Index: CRI ≥ 80
- Beam Angle: 60°
- Rated life: 50,000 hrs

Applications:

- Ideal for commercial, retail, hospitality, and institutional environments, the 12" commercial ceiling cylinders provide powerful and efficient downlighting. Suitable for high-ceiling areas such as lobbies, corridors, conference rooms, and open spaces, with flexible mounting options including surface, pendant, and stem installations.



Phone: (877) 805-2252 | Fax: (877) 805-2252
www.westgatemfg.com



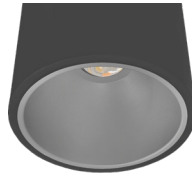
WG-03182025

Other Views:

BLACK:



Side View



Lens View

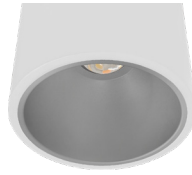


Back View

WHITE:



Side View



Lens View

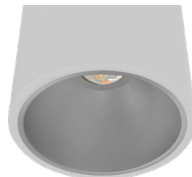


Back View

SILVER



Side View



Lens View



Back View

Performance Table: CMC12L-MCTP-D

MODEL NO.	Wattage	Voltage	Lumens	Color Temp.	LPW
CMC12-MCTP-D-BK	60W	120-277V	7500LM	3000K	125
CMC12-MCTP-D-WH	80W		10000LM	4000K	
CMC12-MCTP-D-SIL	100W		12500LM	5000K	

Sample Ordering

Model Color Temp. Dimming Housing

CMC12L - MCTP - D -

WH = White
BK = Black
SIL = Silver

Accessories:

Blank = No Option For Accessories

CMC12-REFL-GD = Inside-Black Reflector, Matte Gold

CMC12-REFL-WH = Inside-White Reflector, White

CMC12-REFL-SIL = Inside-Silver Reflector, Silver

CMC12-SRK-218-5C-BK = 1/2In Universal Downrod Kit With 5 Wires 2X18 H36In Bk

CMC12-SRK-218-5C-WH = 1/2In Universal Downrod Kit With 5 Wires 2X18 H36In Wh

CMC12-SRK-218-5C-BR = 1/2In Universal Downrod Kit With 5 Wires 2X18 H36In Bronze

CMC12-SRK-218-5C-SIL = 1/2In Universal Downrod Kit With 5 Wires 2X18 H36In Silver

CMC12-SRK-224-5C-BK = 1/2In Universal Downrod Kit With 5 Wires 2X24 H48In Bk

CMC12-SRK-224-5C-WH = 1/2In Universal Downrod Kit With 5 Wires 2X24 H48In Wh

CMC12-SRK-224-5C-BR = 1/2In Universal Downrod Kit With 5 Wires 2X24 H48In Bronze

CMC12-SRK-224-5C-SIL = 1/2In Universal Downrod Kit With 5 Wires 2X24 H48In Silver

CMC12-SRK-340-5C-BK = 1/2In Universal Downrod Kit With 5 Wires 3X40 H120In Bk

CMC12-SRK-340-5C-WH = 1/2In Universal Downrod Kit With 5 Wires 3X40 H120In Wh

CMC12-SRK-340-5C-BR = 1/2In Universal Downrod Kit With 5 Wires 3X40 H120In Bronze

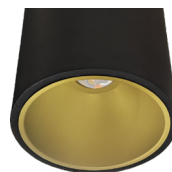
CMC12-SRK-340-5C-SIL = 1/2In Universal Downrod Kit With 5 Wires 3X40 H120In Silver

Factory-Installed Option:

Blank = No Option For Accessories

OPT-EM-CMC46 = Internal Emergency Backup Battery

ACCESSORIES:



CMC12-REFL-GD



CMC12-REFL-WH



CMC12-REFL-SIL

FACTORY-INSTALLED OPTION:

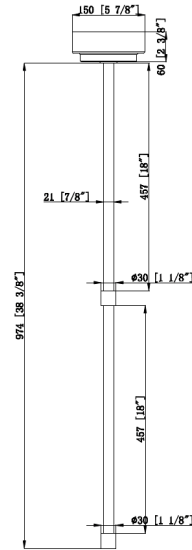


OPT-EM-CMC46





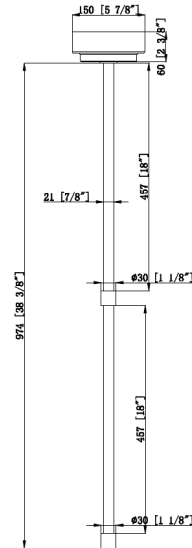
2.1 CMC12L-MCTP-D-BK+CMC12-SRK-218



5 7/8"(W) x 38 3/8"(H)



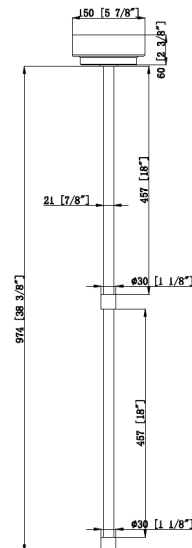
2.1 CMC12L-MCTP-D-WH+CMC12-SRK-218



5 7/8"(W) x 38 3/8"(H)



2.1 CMC12L-MCTP-D-SIL+CMC12-SRK-218

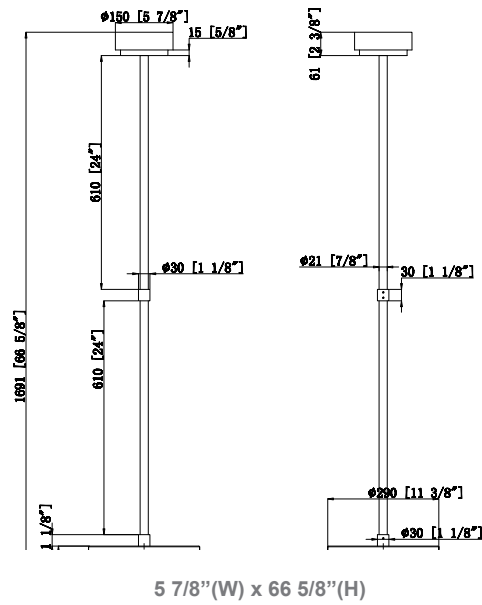


5 7/8"(W) x 38 3/8"(H)

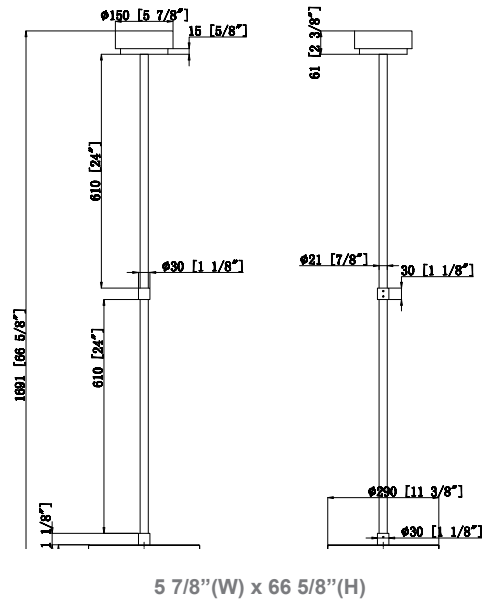




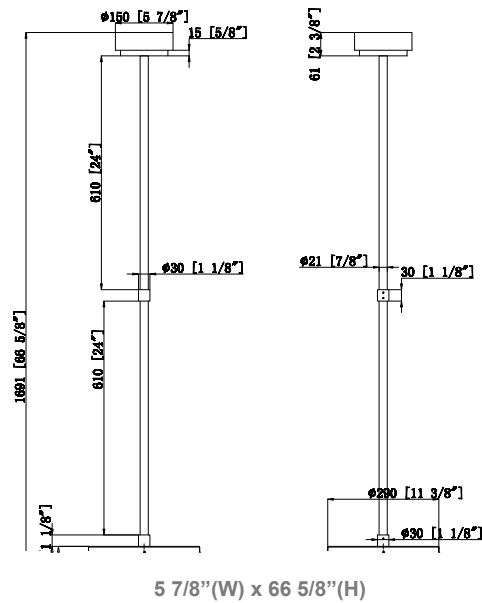
2.1 CMC12L-MCTP-D-BK+CMC12-SRK-224



2.1 CMC12L-MCTP-D-WH+CMC12-SRK-224

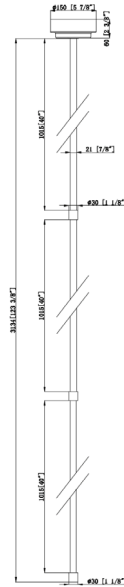


2.1 CMC12L-MCTP-D-SIL+CMC12-SRK-224





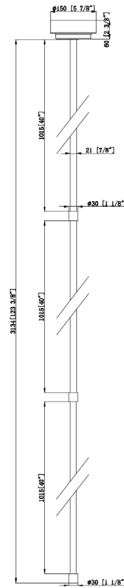
2.1 CMC12L-MCTP-D-BK+CMC12-SRK-340



5 7/8" (W) x 123 3/8" (H)



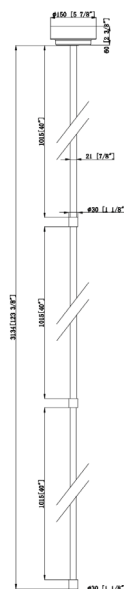
2.1 CMC12L-MCTP-D-WH+CMC12-SRK-340



5 7/8" (W) x 123 3/8" (H)



2.1 CMC12L-MCTP-D-SIL+CMC12-SRK-340



5 7/8" (W) x 123 3/8" (H)

