

**CMC SERIES**

COMMERCIAL LIGHTING

CMC5-MILANI-MCTP-DD-GD

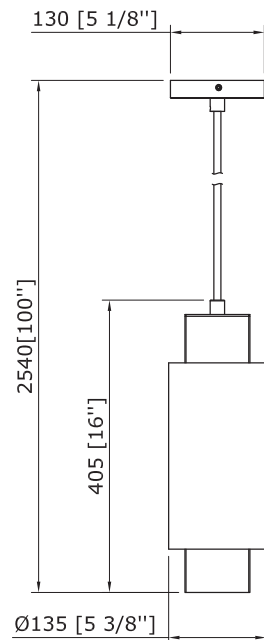
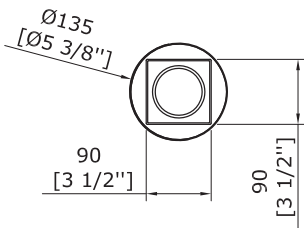
CMC5-MILANI-MCTP-DD-BN

**MCTP**



Gold/Black

Brush Nickel/Black



Technical Drawing: 5 3/8" (D) x 5 1/8" (W) x 100" (H)

The MILAN Series 5" Architectural Cylinder Pendants are decorative luminaires designed for modern commercial and residential interiors such as hospitality, retail, and high-end residential spaces. Featuring selectable wattage (12W/16W/20W) and 3CCT selectable color temperatures (3000K/4000K/5000K), the fixture provides flexible lighting performance. A glass lens delivers smooth 120° light distribution with CRI ≥80, while dual dimming supports TRIAC dimming at 120V and 0-10V dimming at 120-277V. The luminaire includes a 7-ft adjustable suspension power cable with canopy for installation to standard 3" or 4" junction boxes, allowing clean pendant mounting and flexible installation heights.

Customer Name:

Project Name:

Note:

Type:

**FEATURES:**

- 5" architectural cylinder pendant with clean, modern design
- Durable metal housing for long-lasting performance
- Includes 7' adjustable suspension power cable (5-wire SJ cord)
- Includes canopy for standard 3" or 4" junction box installation
- Provides smooth, high-quality illumination
- Available in premium architectural finishes for modern interiors

**SPECIFICATIONS:**

**ELECTRICAL:**

- Input voltage: 120-277VAC, 50/60Hz
- Wattage selectable: 12W / 16W / 20W
- Dual dimming: TRIAC dimming at 120V and 0-10V dimming at 120-277V
- Integrated LED driver
- Total harmonic distortion (THD): <20%

**MECHANICAL:**

- 5" architectural cylinder pendant luminaire
- Aluminum housing with glass lens
- Decorative cylindrical architectural design
- Finish options:
  - Gold / Black
  - Brushed Nickel / Black
- Includes 7' adjustable suspension power cable (5-wire SJ cord)
- Includes canopy compatible with standard 3" or 4" junction boxes
- Field-adjustable suspension length for flexible installation heights
- 5-year warranty

**LIGHTING:**

- Efficacy: 80 LM/W
- Selectable CCT: 3000K / 4000K / 5000K
- CRI: ≥80
- Beam angle: 120°
- Integrated LED light source
- 50,000-hour rated LED life

**APPLICATIONS:**

- Restaurants
- Hospitality spaces
- Retail stores
- Residential interiors
- Lobbies and reception areas
- Corridors and hallways
- Decorative accent lighting

## PERFORMANCE TABLE

MODEL NO.	WATTAGE	VOLTAGE	LUMENS	COLOR TEMP.	LPW
CMC5-MILANI-MCTP-DD-GD CMC5-MILANI-MCTP-DD-BN	12W 16W 20W	120-277V	960LM 1280LM 1600LM	3000K 4000K 5000K	80