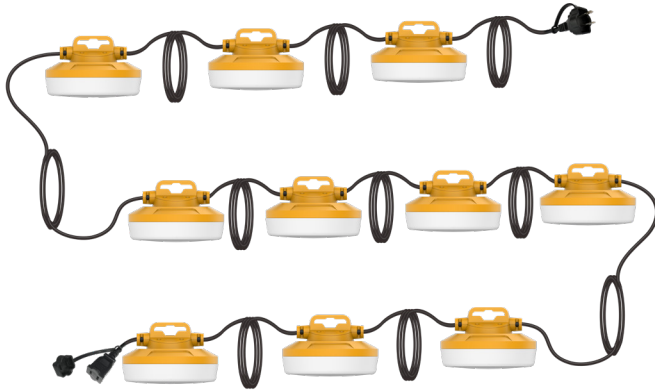


CL-CONST SERIES Industrial Lighting

CL-CONST-100FT-50W-2WIRE 2WIRE ECONOMY CONSTRUCTION STRING LIGHT

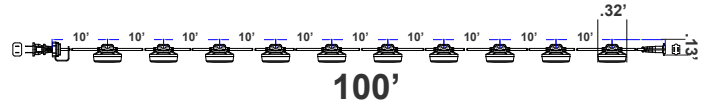


Customer Name: _____

Project Name: _____

Note: _____

Type: _____



Illuminate construction sites efficiently with our 2WIRE Economy Construction String Light. Designed for durability and energy efficiency, this string light provides reliable illumination while minimizing power consumption. Its easy-to-install design ensures quick setup, allowing for seamless integration into any construction project. Trust in Westgate's quality for your lighting needs.

.13'(H) x 100'(W)

Features

- Injection Molding Cord, Strong Tensile Strength Cord: 18/2 SJTW
- 2-Year Warranty
- 20,000 Hours Rated Life
- Anti-Impact

Technical Specifications

Electrical:

- Voltage: 120-277V AC 50/60Hz
- Wattage: 10X10W
- Power Factor: >0.9
- AC Direct / Bypass Existing Ballast
- THD: ≤20%
- Efficacy: 10 X 1200 LPW

Lighting:

- LED SMD type: Edison 2835
- Total Lumens: 12000LM
- Color Temperatures: 5000K
- Color Rendering Index: CRI ≥ 80
- Beam Angle: 360°

Mechanical:

- Injection Molding Cord, Strong Tensile Strength Cord: 18/2 SJTW
- Operating Temperature: 5°F to 113°F
- IP 65, Suitable for Wet Location
- 2-Years Warranty

Applications:

- LED Corn Lamp suitable for supermarkets, warehouses, garages, home, offices, hotels, hospitals, schools, highbay retrofitting

Other Models:

- 5X10W | 6000LM | CL-CONST-50FT-50W-2WIRE



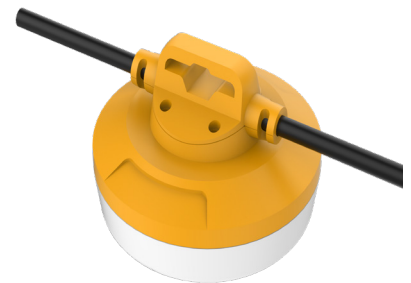
Other Views:



Side View



Front View



Front View

Performance Table: CL-CONST-100FT-50W-2WIRE

MODEL NO.	Wattage	Voltage	Lumens	Color Temp.	LPW
CL-CONST-100FT-50W-2WIRE	10X10W	120~277V	12000LM	5000K	10X1200LM

Sample Ordering

Model	Style	Size	Watt	Style				
CL	-	CONST	-	100FT	-	50W	-	2WIRE

