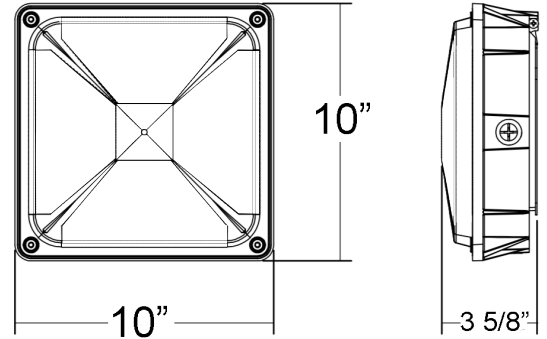


# CDL2 SERIES OUTDOOR LIGHTING

CDL2-45CW  
CDL2-45NW  
CDL2-45WW



Customer Name: \_\_\_\_\_  
Project Name: \_\_\_\_\_  
Note: \_\_\_\_\_ | Type: \_\_\_\_\_



10"(L) X 10" (W) X 3 5/8"(H)

Ideal for indoor parking lots, commercial buildings, schools, warehouses, retail centers, apartment complexes. Designed for 9 to 16-foot mounting.

## Features

- Housing: Die-cast aluminum with prismatic polycarbonate lens redesigned for LED
- Designed for 9 to 16 foot mounting heights
- Factory-Installed Options: Battery Backup, Motion Sensor
- 7-year warranty

## Technical Specifications

### Electrical:

- Input Wattage: 45W
- Input Current: 0.6A MAX
- Input Voltage: 120-277VAC 50/60Hz
- Power factor: >0.90
- Other wattages: 25W/ 60W/ 80W

### Mechanical:

- Die-cast aluminum with bronze
- Four 1/2" threaded hubs located on four sides of the housing
- Prismatic polycarbonate lens
- Lifespan: 70000 Hrs
- Operating temperature: -4°F ~ 104°F
- IP rating: IP65, Wet Locations

### Lighting:

- Dimming: 0~10V dimmable
- LED type/ Brand: SMD 3030/ Philips Lumileds LEDs
- Total lumens: 4200 LM/ 4300 LM/ 4400 LM
- Color temperature: 3000K/ 4000K/ 5000K
- Color rendering index: >80
- Beam angle: 150°

### Applications:

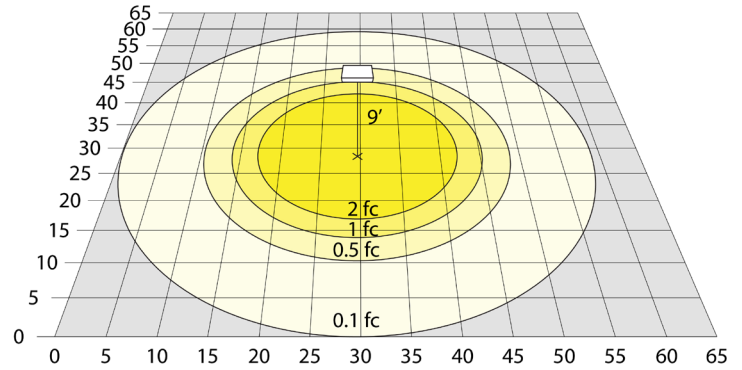
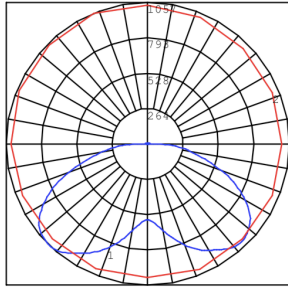
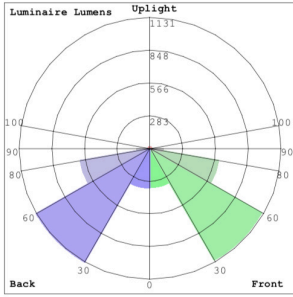
- Indoor Parking
- Commercial Buildings
- School
- Warehouses
- Complexes
- Apartment
- Garage

### Other Models:

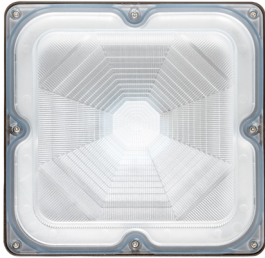
- |                            |                            |                            |
|----------------------------|----------------------------|----------------------------|
| • 25W   2880LM   CDL2-25CW | • 60W   7400LM   CDL2-60CW | • 80W   9500LM   CDL2-80CW |
| • 25W   2800LM   CDL2-25NW | • 60W   7100LM   CDL2-60NW | • 80W   9400LM   CDL2-80NW |
| • 25W   2780LM   CDL2-25WW | • 60W   7100LM   CDL2-60WW | • 80W   9400LM   CDL2-80WW |



## Photometrics: CDL2-45W



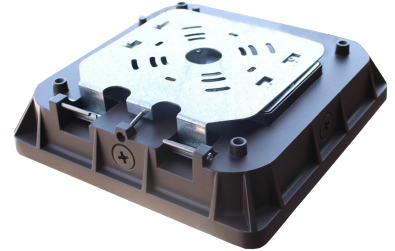
## Other Views:



Front View



Side View



Back View

## Performance Table: CDL2-45W

MODEL NO.	Wattage	Voltage	Lumens	Color Temp.	BUG Rating	LPW
CDL2-45CW	45W	120~277V	4400LM	5000K	B2-U2-R2	97.7
CDL2-45NW	45W	120~277V	4300LM	4000K	B2-U2-R2	95.5
CDL2-45WW	45W	120~277V	4200LM	3000K	B2-U2-R2	93.3

## Sample Ordering

Model      Wattage      Color Temp.

CDL2   -   45W   -  

WW = 5000K  
NW = 4000K  
CW = 5000K

## Accessories Options

Blank = No Option For Accessories

WEC-7RC = REMORTE CONTROL for OPT-SEN-3MR-4

## Factory Installed Options

Blank = No Option For Factory-Instalaaed

OPT-EM-OD1EXT = External Emergency Battery Backup

OPT-SEN-3MR-4 = External Programmable Microwave BI-Level, Remote Capable

OPT-SEN-2MD-35 = Internal Programmable Microwave BI-Level DIP Switch

## Example:

1. CDL2-45CW (For CDL2 45W 5000K fixture 120V-277V)
2. CDL2-45CW WEC-7RC (For CDL2 45W 5000K fixture 120V-277V) (For Remote Control)
3. CDL2-45CW WEC-7RC OPT-SEN-3MR-4 (For CDL2 45W 5000K fixture 120V-277V) (For Remote Control) (For Programmable Microwave Bi-Level)

## SENSOR AND REMOTE CONTROL OPTIONS



OPT-EM-OD1EXT



WEC-7RC  
(For WEC-3MR-4 sensor only)

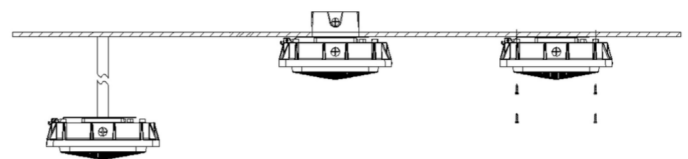


OPT-SEN-3MR-4



OPT-SEN-SMD-35

## MOUNTING OPTIONS



**WESTGATE**

Phone: (877) 805-2252 | Fax: (877) 805-2252  
www.westgatemfg.com | www.westgatecontrols.co

