

# BOL-G4 SERIES Outdoor Lighting

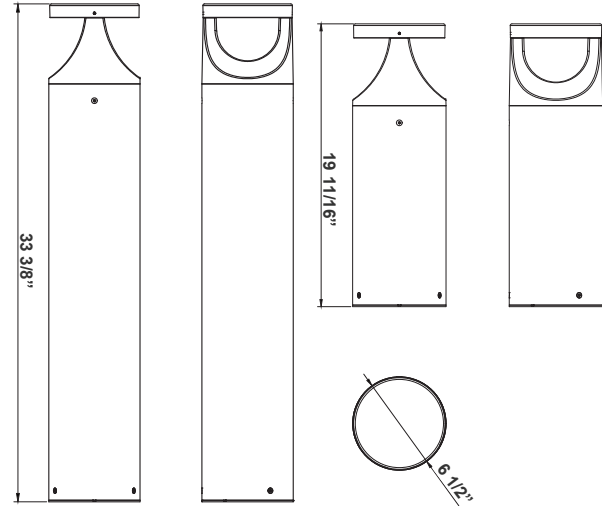
BOL-G4-201-MCTP-BR  
BOL-G4-201-MCTP-BK  
MODULAR BOLLARD SYSTEM G4

**MCTP** Multi Color Temperature & Multi Power/Wattage (Selectable)

Customer Name: \_\_\_\_\_

Project Name: \_\_\_\_\_

Note: \_\_\_\_\_ Type: \_\_\_\_\_



33 3/8 "(H) x 6 1/2"(D)  
19 11/16 "(H) x 6 1/2"(D)

Bollards are designed for walkways, entrance ways, drives and other small-area lighting applications where low mounting heights are desirable

## Features

- Corrosion Resistant Aluminum for Exterior
- Samsung 2835 LED Chips
- MCTP: Wattage & CCT Selectable Switches inside fixture
- 7-Year Warranty

## Technical Specifications

### Electrical:

- Voltage: 120-277VAC
- Wattage: 7W/14W/22W
- Power Factor: >0.9
- Efficacy: 110 LPW

### Mechanical:

- Corrosion Resistant Aluminum for Exterior
- Mounting Accessories & Anchor Bolts Included (7-1/2" long)
- Operating Temperature: -40°F to 113°F
- 7 Years Warranty
- IP Rating: IP65, Wet Locations

### Lighting:

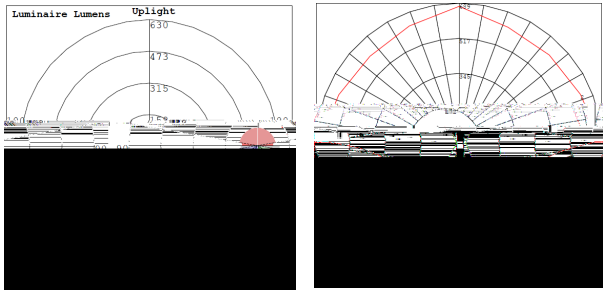
- MCTP: Wattage & CCT Selectable Switches inside fixture
- Lumens: 2420LM Max.
- Color Temperatures: 3000K/4000K/5000K
- Color Rendering Index: CRI ≥ 70
- Beam Angle : 360°
- Lifespan: 70000 Hours

### Applications:

- Bollards are designed for walkways, entrance ways, drives and other small-area lighting applications where low mounting heights are desirable



## Photometrics: BOL-G4-201-MCTP



BUD Rating: B1-U3-G2

Area 75'x 65' Mounting Height: 4'

## Other Views:



Head

**BOL-G4-201-MCTP-BK**  
G4 BOLLARD HEAD MODEL 201

+



Shaft  
Avail.in: 14" / 30"  
(Sold Separately)

**BOL-G4-SHAFT-14-BK**  
**BOL-G4-SHAFT-30-BK**

+



Anchor Bolts  
& Mounting Plate  
(Sold Separately)

**BOL-G4-ABK-R**

=



Head

**BOL-G4-201-MCTP-BR**  
G4 BOLLARD HEAD MODEL 201

+



Shaft  
Avail.in: 14" / 30"  
(Sold Separately)

**BOL-G4-SHAFT-14-BR**  
**BOL-G4-SHAFT-30-BR**

+



Anchor Bolts  
& Mounting Plate  
(Sold Separately)

**BOL-G4-ABK-R**

=



## Performance Table: BOL-G4-201-MCTP

MODEL NO.	Wattage	Voltage	Lumens	Color Temp.	BUG Rating	LPW
BOL-G4-201-MCTP	7W	120~277V	770LM	3000K 4000K 5000K	B1-U3-G2	110
	14W		1750LM			
	22W		2420LM			



## Accessories:

Blank = No Option For Accessories

- BOL-G4-SHAFT-14-BK = G4 Bollard Shaft 14 Inch, Black
- BOL-G4-SHAFT-14-BR = G4 Bollard Shaft 14 Inch, Bronze
- BOL-G4-SHAFT-30-BK = G4 Bollard Shaft 30 Inch, Black
- BOL-G4-SHAFT-30-BR = G4 Bollard Shaft 30 Inch, Bronze
- BOL-G4-ABK-R = G4 Bollard Round Replacement Anchor
- BOL-G4-GSH-01-BK = G4 Bollard 180-Degree Glare Shield - Black
- BOL-G4-GSH-01-BR = G4 Bollard 180-Degree Glare Shield - Bronze
- BOL-G4-SHAFT-30-GFCI-BK = G4 Bollard Shaft 30 Inch With GFCI Outlet Compartment, Black
- BOL-G4-SHAFT-30-GFCI-BR = G4 Bollard Shaft 30 Inch With GFCI Outlet Compartment, Bronze
- BOL-G4-SHAFT-23-GFCI-BK = G4 Bollard Shaft 30 Inch With GFCI Outlet Compartment, Black
- BOL-G4-SHAFT-23-GFCI-BR = G4 Bollard Shaft 30 Inch With GFCI Outlet Compartment, Bronze

## Factory-Installed Options:

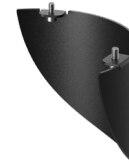
Blank = No Option For Accessories

- OPT-EM-OD1INT = Emergency Backup Internal Battery, Back Box
- OPT-CRL-95(BK/GR/SR/WH) = Paint
- OPT-SEN-WMC = Microwave Bi-Level Sensor

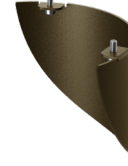
## ACCESSORIES:



BOL-G4-ABK-R



BOL-G4-GSH-01-BK



BOL-G4-GSH-01-BR

## FACTORY-INSTALLED OPTION:



OPT-EM-OD1INT  
INTERNAL BATTERY



OPT-SEN-WMC  
MICROWAVE BI-LEVEL SENSOR



OPT-PC-B  
FOR 120V-277V PHOTOCCELL

## ACCESSORIES



### BOL-G4-SHAFT-30-GFCI-BK

20A 125V Decorative tamper-resistant GFCI receptacle  
Receptacle Rating 20A, 125VAC



### BOL-G4-SHAFT-30-GFCI-BR

20A 125V Decorative tamper-resistant GFCI receptacle  
Receptacle Rating 20A, 125VAC



### BOL-G4-SHAFT-23-GFCI-BK

20A 125V Decorative tamper-resistant GFCI receptacle  
Receptacle Rating 20A, 125VAC



### BOL-G4-SHAFT-23-GFCI-BR

20A 125V Decorative tamper-resistant GFCI receptacle  
Receptacle Rating 20A, 125VAC



**COLOR CHART:** \* Choose from one of our Premium Colors with no set-up fee.

**Gloss:**



SILVER METALLIC  
70 GLOSS  
T357-GR105



SILVER METALLIC  
30 GLOSS  
T353-GR06



DARK RED 90  
GLOSS  
P009-RD02



INTERNATIONAL  
ORANGE 90  
GLOSS  
T009-OG26



SAFETY ORANGE  
90 GLOSS  
T009-OG01



YELLOW 90  
GLOSS  
T009-YL14



YELLOW 90  
GLOSS  
T009-YL01



TRAFFIC GREEN  
70 GLOSS  
T007-GN16



GREEN 70 GLOSS  
T007-GN13



GREEN 60 GLOSS  
C006-GN03



BLUE 90 GLOSS  
T009-BL01



DARK BLUE 80  
GLOSS  
T008-BL20



RAL 8028 TERRA  
BROWN 90 GLOSS  
C209-BR358

**Hammer:**



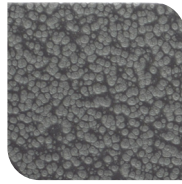
WHITE HAMMER  
T013-WH09



BEIGE HAMMER  
T013-BG38



GREY HAMMER  
C013-GR08



SILVER  
HAMMERTONE  
T064-GR05



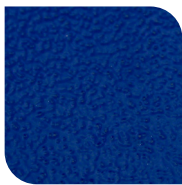
BLACK HAMMER  
T013-BK62



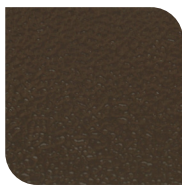
RED HAMMER  
T013-RD15



GREEN HAMMER  
T013-GN220



BLUE HAMMER  
T013-BL468



BRONZE HAMMER  
T012-BR161

**Texture:**



WHITE TEXTURE  
C031-WH120



FLINT GRAY  
TEXTURE  
T243-GR522



BLACK TEXTURE  
C241-BK109



RED TEXTURE  
T241-RD129



BLUE TEXTURE  
C241-BL544

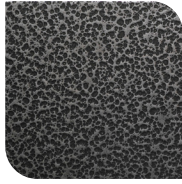


OIL RUBBED  
BRONZE TEXTURE  
T291-BR251

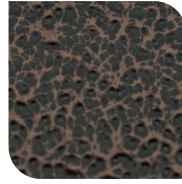
**Vein:**



BLACK/WHITE  
VEIN  
T075-WH34



SILVER VEIN  
T375-BK26



COPPER VEIN  
EXTERIOR  
T075-BK211



GOLD VEIN  
T375-BK10



COPPER VEIN  
T375-BK07