

BOL SERIES Outdoor Lighting

BOL-505-26-MCT-BK
BOL-505-26-MCT-BR
RECTANGULAR PATH-LIGHT BOLLARD, 3 CCT, 4-3/4 X 3-3/8"

MCTP Multi Color Temperature & Multi Power/Wattage (Selectable)

Customer Name: _____

Project Name: _____

Note: _____

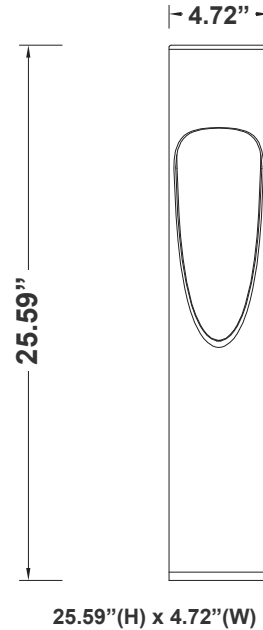
Type: _____



Avail Finishes:



Bollards are designed for walkways, entrance ways, drives and other small-area lighting applications where low mounting heights are desirable



Features

- Corrosion Resistant Aluminum for Exterior
- Wattage & CCT Selectable Switches inside fixture
- 7-Year Warranty

Technical Specifications

Electrical:

- Voltage: 120-277V AC
- Wattage: 15W
- Power Factor: >0.9
- Efficacy: 100LM/W

Mechanical:

- Corrosion Resistant Aluminum for Exterior
- Anchor bolt and accessories are NOT included - see the accessories
- Operating Temperature: -40°F to 122°F
- IP Rating: IP65, Wet Locations
- 7 Years Warranty

Lighting:

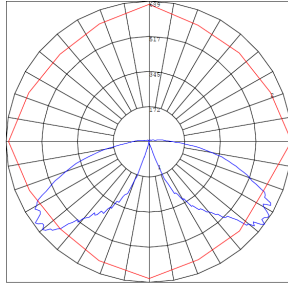
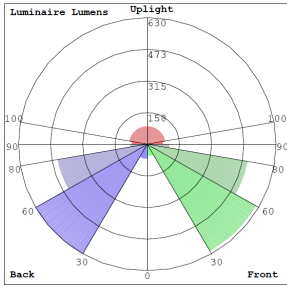
- Multi CCT Selectable Switches inside fixture
- Lumens: 1500LM Max.
- Color Temperatures: 3000K/4000K/5000K
- Color Rendering Index: CRI ≥ 80
- Beam Angle : 360°
- Lifespan: 70000 Hours

Applications:

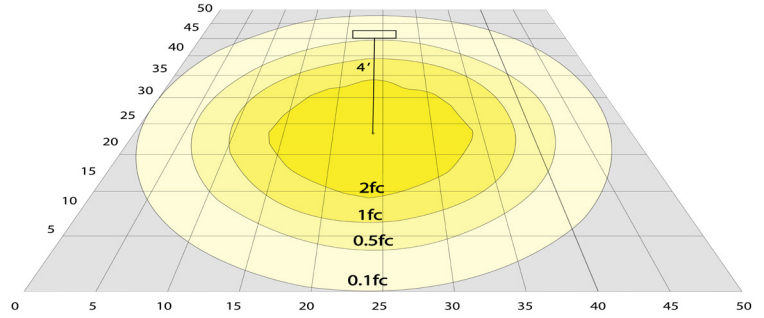
- Bollards are designed for walkways, entrance ways, drives and other small-area lighting applications where low mounting heights are desirable



Photometrics: BOL-505-26-MCT



BUD Rating: B1-U3-G2



Area 75'x 65' Mounting Height: 4'

Performance Table: BOL-502-32-MCT

MODEL NO.	Wattage	Voltage	Lumens	Color Temp.	BUG Rating	LPW
BOL-505-26-MCT-BK BOL-505-26-MCT-BR	15W	120~277V	1500LM	3000K 4000K 5000K	B1-U3-G2	100

Sample Ordering

Model **Style** **Size** **Color Temp.** **Housing**
 - - - -

BK= Black
BR= Bronze

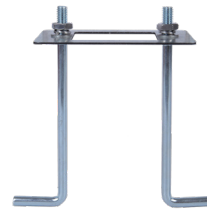
Accessories:

Blank = No Option For Accessories
BOL-505-ABK = BOL-505 Series Anchor Bolt Kit

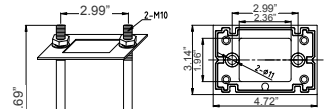
Factory-Installed Options:

Blank = No Option For Accessories
OPT-EM-OD1INT = Emergency Backup Internal Battery, Back Box
OPT-CRL-95(BK/GR/SR/WH) = Paint
OPT-SEN-WMC = Microwave Bi-Level Sensor

ACCESSORIES:



BOL-505-ABK



BOL-505-ABK
6.69"(H) x 2.99"(W)

FACTORY-INSTALLED OPTION:



OPT-EM-OD1INT
INTERNAL BATTERY



OPT-SEN-WMC
MICROWAVE BI-LEVEL SENSOR



OPT-PC-B
FOR 120V-277V PHOTOCELL



COLOR CHART: * Choose from one of our Premium Colors with no set-up fee.

Gloss:



SILVER METALLIC
70 GLOSS
T357-GR105



SILVER METALLIC
30 GLOSS
T353-GR06



DARK RED 90
GLOSS
P009-RD02



INTERNATIONAL
ORANGE 90
GLOSS
T009-OG26



SAFETY ORANGE
90 GLOSS
T009-OG01



YELLOW 90
GLOSS
T009-YL14



YELLOW 90
GLOSS
T009-YL01



TRAFFIC GREEN
70 GLOSS
T007-GN16



GREEN 70 GLOSS
T007-GN13



GREEN 60 GLOSS
C006-GN03



BLUE 90 GLOSS
T009-BL01



DARK BLUE 80
GLOSS
T008-BL20



RAL 8028 TERRA
BROWN 90 GLOSS
C209-BR358

Hammer:



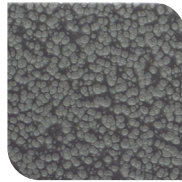
WHITE HAMMER
T013-WH09



BEIGE HAMMER
T013-BG38



GREY HAMMER
C013-GR08



SILVER
HAMMERTONE
T064-GR05



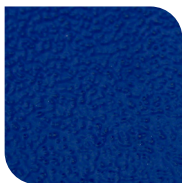
BLACK HAMMER
T013-BK62



RED HAMMER
T013-RD15



GREEN HAMMER
T013-GN220



BLUE HAMMER
T013-BL468



BRONZE HAMMER
T012-BR161

Texture:



WHITE TEXTURE
C031-WH120



FLINT GRAY
TEXTURE
T243-GR522



BLACK TEXTURE
C241-BK109



RED TEXTURE
T241-RD129



BLUE TEXTURE
C241-BL544

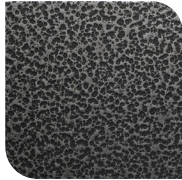


OIL RUBBED
BRONZE TEXTURE
T291-BR251

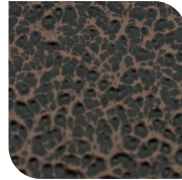
Vein:



BLACK/WHITE
VEIN
T075-WH34



SILVER VEIN
T375-BK26



COPPER VEIN
EXTERIOR
T075-BK211



GOLD VEIN
T375-BK10



COPPER VEIN
T375-BK07

