

# BOL SERIES Outdoor Lighting

BOL-502-9-MCT-BK  
BOL-502-9-MCT-BR  
RECTANGULAR PATH-LIGHT BOLLARD,3CCT. 4-3/4 X3-3/8"

**MCTP** Multi Color Temperature & Multi Power/Wattage (Selectable)

Customer Name: \_\_\_\_\_

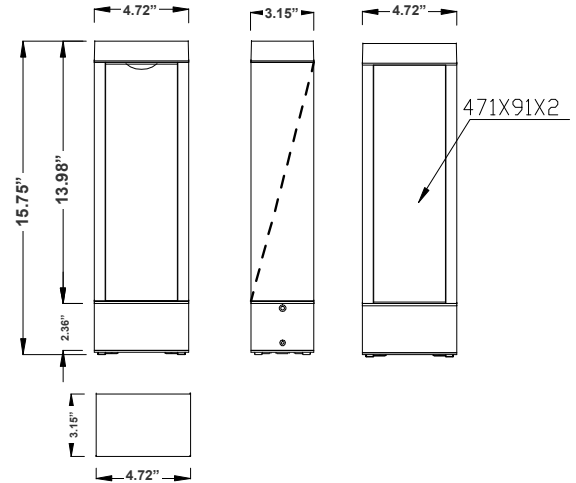
Project Name: \_\_\_\_\_

Note: \_\_\_\_\_

Type: \_\_\_\_\_



Avail Finishes:



**15.75"(H) x 4.72"(W) x 3.15"(D)**

Bollards are designed for walkways, entrance ways, drives and other small-area lighting applications where low mounting heights are desirable

## Features

- Corrosion Resistant Aluminum for Exterior
- Wattage & CCT Selectable Switches inside fixture
- 7-Year Warranty

## Technical Specifications

### Electrical:

- Voltage: 120-277V AC
- Wattage: 10W
- Power Factor: >0.9
- Efficacy: 100LM/W

### Mechanical:

- Corrosion Resistant Aluminum for Exterior
- Anchor bolt and accessories are not included - see the accessories
- Operating Temperature: -40°F to 122°F
- IP Rating: IP65, Wet Locations
- 7 Years Warranty

### Lighting:

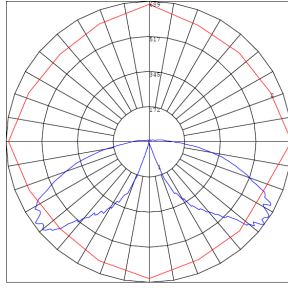
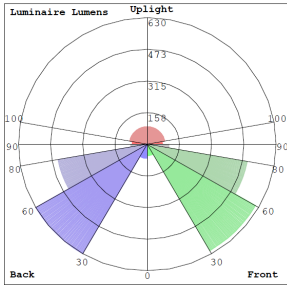
- Multi CCT Selectable Switches inside fixture
- Lumens: 1000LM Max.
- Color Temperatures: 3000K/4000K/5000K
- Color Rendering Index: CRI ≥ 80
- Beam Angle : 360°
- Lifespan: 70000 Hours

### Applications:

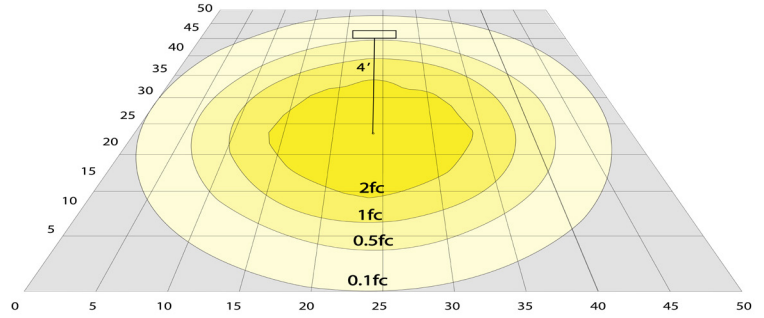
- Bollards are designed for walkways, entrance ways, drives and other small-area lighting applications where low mounting heights are desirable



## Photometrics: BOL-502-9-MCT



BUD Rating: B1-U3-G2



Area 75'x 65' Mounting Height: 4'

## Performance Table: BOL-502-9-MCT

MODEL NO.	Wattage	Voltage	Lumens	Color Temp.	BUG Rating	LPW
BOL-502-9-MCT-BK BOL-502-9-MCT-BR	10W	120~277V	500LM	3000K 4000K 5000K	B1-U3-G2	100

## Sample Ordering

**Model**    **Style**    **Size**    **Color Temp.**    **Housing**  
 -  -  -  -

BK= Black  
BR= Bronze

### Accessories:

Blank = No Option For Accessories  
BOL-502-ABK = BOL-502 Series Anchor Bolt Kit

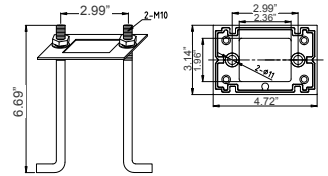
### Factory-Installed Options:

Blank = No Option For Accessories  
OPT-EM-OD1INT = Emergency Backup Internal Battery, Back Box  
OPT-CRL-95(BK/GR/SR/WH) = Paint  
OPT-SEN-WMC = Microwave Bi-Level Sensor

### ACCESSORIES:



BOL-502-ABK



BOL-502-ABK  
6.69"(H) x 2.99"(W)

### FACTORY-INSTALLED OPTION:



OPT-EM-OD1INT  
INTERNAL BATTERY



OPT-SEN-WMC  
MICROWAVE BI-LEVEL SENSOR



OPT-PC-B  
FOR 120V-277V PHOTOCELL



**COLOR CHART:** \* Choose from one of our Premium Colors with no set-up fee.

**Gloss:**



SILVER METALLIC  
70 GLOSS  
T357-GR105



SILVER METALLIC  
30 GLOSS  
T353-GR06



DARK RED 90  
GLOSS  
P009-RD02



INTERNATIONAL  
ORANGE 90  
GLOSS  
T009-OG26



SAFETY ORANGE  
90 GLOSS  
T009-OG01



YELLOW 90  
GLOSS  
T009-YL14



YELLOW 90  
GLOSS  
T009-YL01



TRAFFIC GREEN  
70 GLOSS  
T007-GN16



GREEN 70 GLOSS  
T007-GN13



GREEN 60 GLOSS  
C006-GN03



BLUE 90 GLOSS  
T009-BL01



DARK BLUE 80  
GLOSS  
T008-BL20



RAL 8028 TERRA  
BROWN 90 GLOSS  
C209-BR358

**Hammer:**



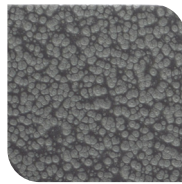
WHITE HAMMER  
T013-WH09



BEIGE HAMMER  
T013-BG38



GREY HAMMER  
C013-GR08



SILVER  
HAMMERTONE  
T064-GR05



BLACK HAMMER  
T013-BK62



RED HAMMER  
T013-RD15



GREEN HAMMER  
T013-GN220



BLUE HAMMER  
T013-BL468



BRONZE HAMMER  
T012-BR161

**Texture:**



WHITE TEXTURE  
C031-WH120



FLINT GRAY  
TEXTURE  
T243-GR522



BLACK TEXTURE  
C241-BK109



RED TEXTURE  
T241-RD129



BLUE TEXTURE  
C241-BL544



OIL RUBBED  
BRONZE TEXTURE  
T291-BR251

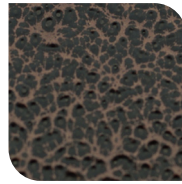
**Vein:**



BLACK/WHITE  
VEIN  
T075-WH34



SILVER VEIN  
T375-BK26



COPPER VEIN  
EXTERIOR  
T075-BK211



GOLD VEIN  
T375-BK10



COPPER VEIN  
T375-BK07

