

INSTALLATION GUIDE

IMPORTANT SAFETY INFORMATION:

Please read all the instructions below before installation.

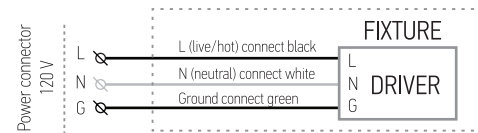
- ▶ Mark sure that the supply voltage corresponds to the rated product voltage.
- ▶ The product must be installed by a qualified electrician in accordance with the National Electrical Code and corresponding local codes.
- ▶ If the product damaged, do not use it.

Caution: Only connect to adjacent units.

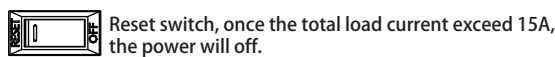
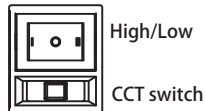
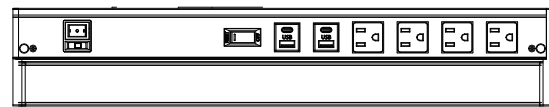
UNDER-CABINET LUMINAIRE INSTRUCTIONS

CAUTION: SUITABLE FOR UNDER-CABINET MOUNT.

ELECTRICAL SCHEMATIC DIAGRAM:



FUNCTION GUIDE:

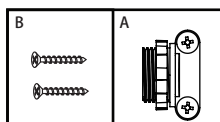


NOTE:

- UCR-12: WITH 1 OUTLET.
- UCR-18: WITH 1 OUTLET, 1 USB+1 USB-C PORTS.
- UCR-24: WITH 3 OUTLETS, 2 USB+2 USB-C PORTS, 1 RESET SWITCH.
- UCR-32: WITH 4 OUTLETS, 2 USB+2 USB-C PORTS, 1 RESET SWITCH.
- UCR-40: WITH 4 OUTLETS, 2 USB+2 USB-C PORTS, 1 RESET SWITCH.

PACKAGE CONTENTS:

Description	Q-ty
LED Under Cabinet Swivel	1
Romex Connection Kit(A)	1
Screws(B)	2
Box	1
Installation sheet	1



⚠ WARNING

RISK OF PERSONAL INJURY-READ and follow all WARNINGS AND INSTALLATION INSTRUCTIONS.

Keep or give to the owner for future reference.

Risk of cuts: Wear gloves to prevent cuts or abrasions when removing from carton, handling, installing, and maintaining this product.

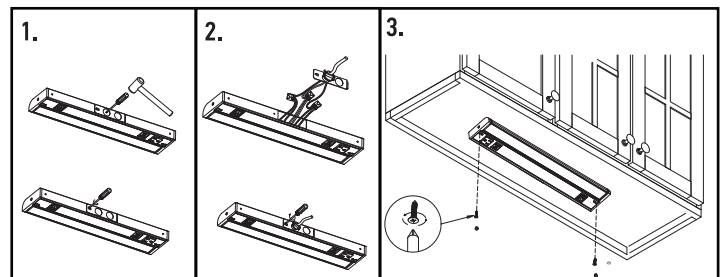
Risk of electric shock: This product must be installed in accordance with the applicable installation code by a person familiar with the construction and operation of the product and the hazards involved.

Risk of Fire: Minimum 194 F supply conductor, Consult a qualified electrician to ensure correct branch circuit conductor.

Westgate assumes no responsibility for claims arising out of improper or careless Installation or handling of this product.

HARDWIRE INSTALLATION:

1. Remove the knock-out. Dismount adapter plate by loosening screw. Insert The romex connector into the open hole and secure it with the wire nut.
2. Connect the wires. Black to Black. White to White. Green to Green using quick connectors. Tuck all the wires into the fixture and reattach the adapter plate by tightening the screw.
3. Attach the fixture to the surface using 2 screws. multiple fixtures can be linked together with the end to end connector or linking cord. Choose needed color temperature and lighting mode using the switch.



CAUTION:

TOTAL LOAD CURRENT DO NOT EXCEED 15A.

ITEM NO.:

UCR-12, UCR-18, UCR-24, UCR-32, UCR-40