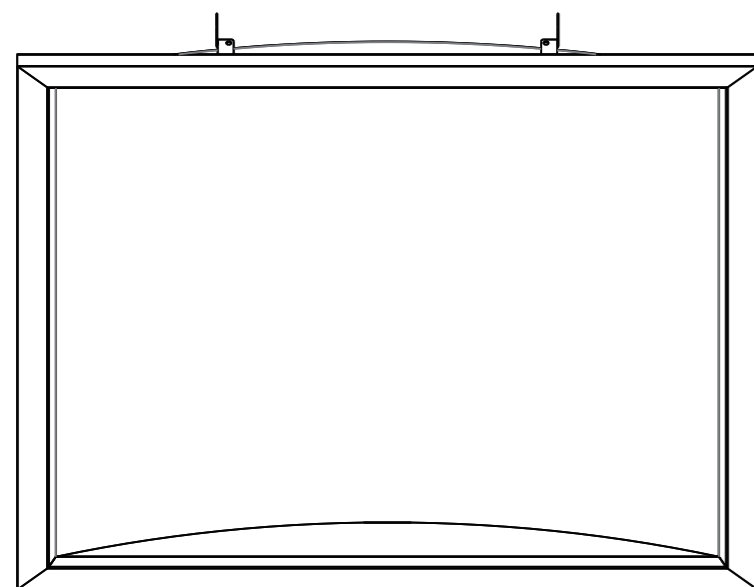


**PREMIUM CURVED INDIRECT TROFFER**

User Manual



All the pictures are just for reference and we have the final explanation rights

**Included Parts**

Instruction manual x1

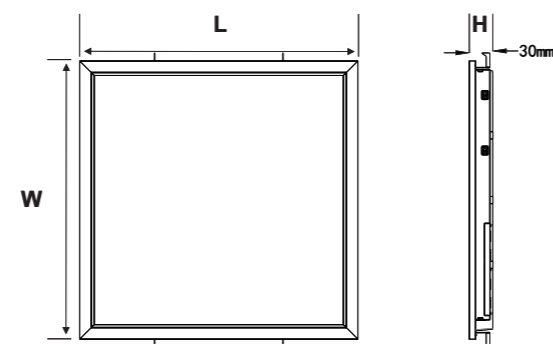
**Safety Information**

**CAUTION! Risk Of Electric Shock**

Turn off all power prior to installation by switching off circuit breaker or removing fuse at fuse box.

- This product should be installed by a fully certified electrician in accordance with relevant federal, state and local building and electrical codes

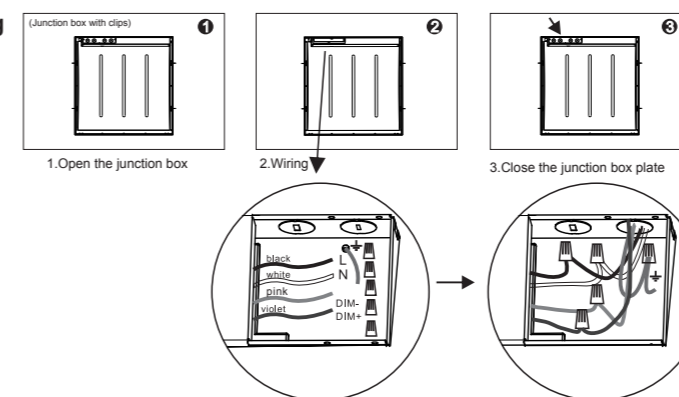
**Size**



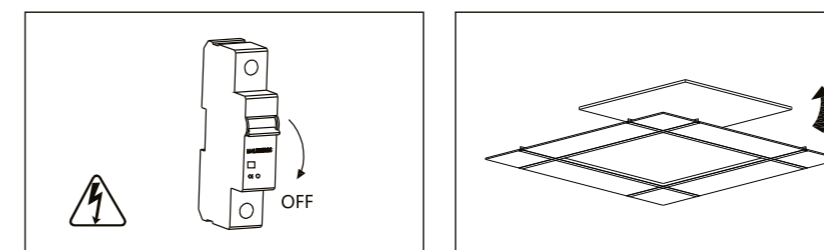
SIZE	L X W X H (mm)	X W X H (Inch)
<b>2FT X 2 FT</b>	<b>602 X 602 X 50 mm</b>	<b>23.7 X 23.7 X 1.97"</b>
<b>2FT X 4 FT</b>	<b>602 X 1209 X 50 mm</b>	<b>23.7 X 47.6 X 1.97"</b>

**Wiring**

• 0-10V dimming

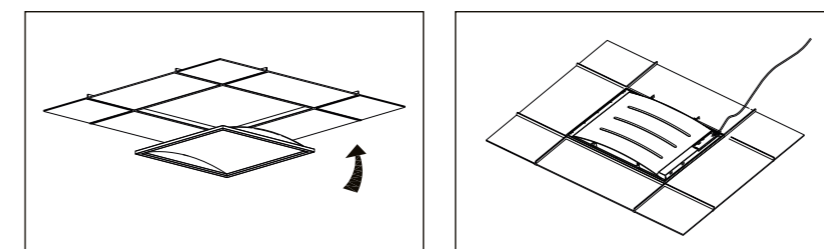


**Recessed**



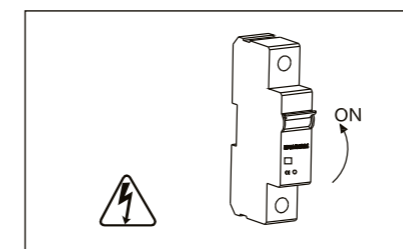
1. Turn electricity off.

2. Removing the plate on T-bar ceiling.



3. Place the panel light on T-bar ceiling and adjust its position

4. Connect lamp and driver by quick connectors



5. Turn electricity on.

**Notes**

- Indoor lighting only.
- Before installation, ensure the LED panel is not damaged.
- Don't stare at the LED luminous surface for long time.
- Keep away from children, and ensure working electrical apparatus inaccessible to them.
- No packages accessible to children, because they might be choked for playing, or eating the small accessories.
- No covering, be away from fire or high-temperature substance.
- Manufacturer reserves the right to offer no replacement or warranty to the led panels dissembled or repaired by users themselves.
- Cut off power before cleaning the panels with dry cloth, use no chemical or corrosive substance.
- Cut off power before installation.
- The light source of this luminaire is not replaceable; when the light source reaches its end of life the whole luminaire shall be replaced.