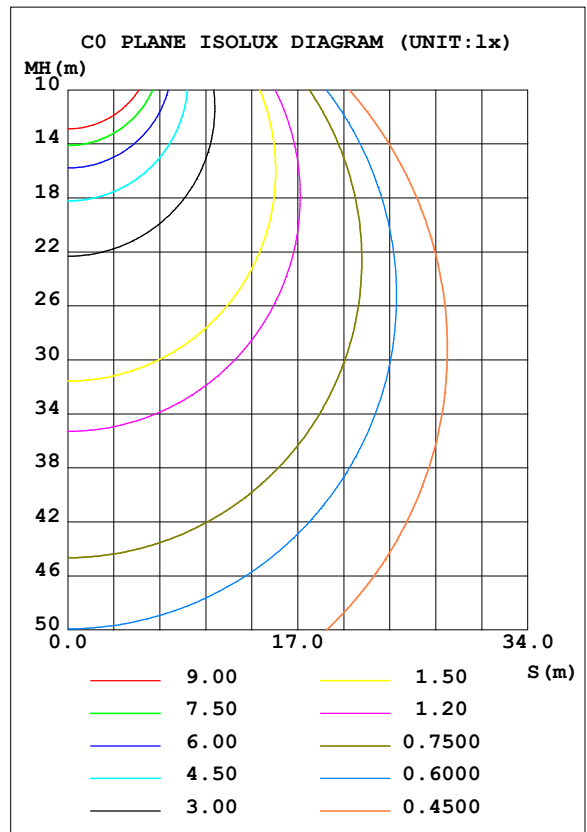
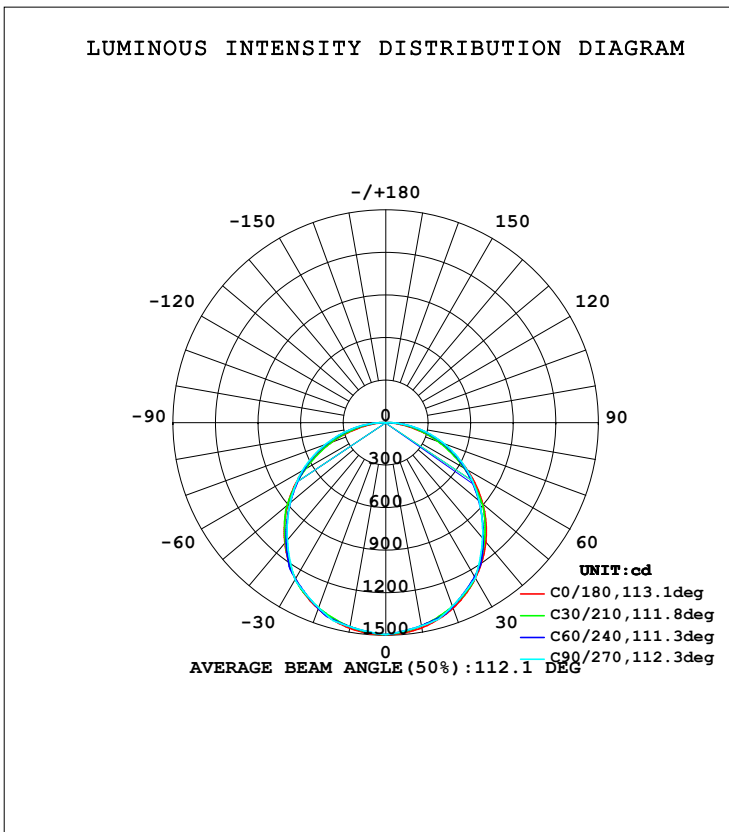


LUMINAIRE PHOTOMETRIC TEST REPORT

| | | |
|---|-------|-------------------|
| Test:U:120.1V I:0.3423A P:40.94W PF:0.9960 Lamp Flux:4308.76x1 lm | | |
| NAME: | TYPE: | WEIGHT: |
| SPEC.: | DIM.: | SERIAL No.: |
| MFR.: | SUR.: | PROTECTION ANGLE: |

| DATA OF LAMP | | PHOTOMETRIC DATA Eff: 105.24 lm/W | | | |
|-------------------|---------|-----------------------------------|--------|---------------------|-----------|
| MODEL | | I _{max} (cd) | 1496 | S/MH (C0/180) | 1.27 |
| NOMINAL POWER (W) | | LOR (%) | 100.0 | S/MH (C90/270) | 1.26 |
| RATED VOLTAGE (V) | | TOTAL FLUX (lm) | 4308.8 | η UP, DN (C0-180) | 0.0, 49.6 |
| NOMINAL FLUX (lm) | 4308.76 | CIE CLASS | DIRECT | η UP, DN (C180-360) | 0.0, 50.4 |
| LAMPS INSIDE | 1 | η up (%) | 0.0 | CIBSE SHR NOM | 1.25 |
| TEST VOLTAGE (V) | | η down (%) | 100.0 | CIBSE SHR MAX | 1.35 |



C Range: 0 - 360DEG
 C Interval: 5.0DEG
 Test Speed: HIGH
 Temperature: 25.3DEG
 Operators: DAMIN
 Test Date: 2019-10-30

γ Range: 0 - 90DEG
 γ Interval: 0.5DEG
 Test System: EVERFINE GO-2000A_V1 SYSTEM V2.0.286
 Humidity: 65.0%
 Test Distance: 9.646m [K=1.0000]
 Remarks:

ZONAL FLUX DIAGRAM

ZONAL FLUX DIAGRAM:

| γ | C0 | C45 | C90 | C135 | C180 | C225 | C270 | C315 | γ | Φ zone | Φ total | %lum,lamp |
|-----|-----------------------|-------|-------|-------|-------|-------|-------|-------|---------|--------|---------|-----------|
| 5 | 1489 | 1477 | 1475 | 1478 | 1491 | 1481 | 1478 | 1479 | 0- 5 | 35.52 | 35.52 | 0.82,0.82 |
| 10 | 1468 | 1453 | 1454 | 1455 | 1472 | 1459 | 1461 | 1457 | 5- 10 | 105.1 | 140.6 | 3.26,3.26 |
| 15 | 1435 | 1422 | 1434 | 1425 | 1440 | 1432 | 1444 | 1429 | 10- 15 | 171.4 | 312.0 | 7.24,7.24 |
| 20 | 1390 | 1386 | 1377 | 1390 | 1396 | 1399 | 1389 | 1396 | 15- 20 | 232.2 | 544.1 | 12.6,12.6 |
| 25 | 1333 | 1322 | 1320 | 1326 | 1341 | 1338 | 1335 | 1333 | 20- 25 | 284.6 | 828.8 | 19.2,19.2 |
| 30 | 1265 | 1250 | 1264 | 1255 | 1274 | 1268 | 1280 | 1263 | 25- 30 | 328.0 | 1157 | 26.8,26.8 |
| 35 | 1187 | 1174 | 1163 | 1180 | 1195 | 1194 | 1180 | 1188 | 30- 35 | 360.4 | 1517 | 35.2,35.2 |
| 40 | 1099 | 1091 | 1062 | 1097 | 1107 | 1113 | 1080 | 1106 | 35- 40 | 378.8 | 1896 | 44,44 |
| 45 | 999.7 | 975.5 | 961.1 | 982.2 | 1010 | 999.1 | 980.5 | 992.2 | 40- 45 | 384.0 | 2280 | 52.9,52.9 |
| 50 | 893.9 | 861.2 | 860.3 | 866.9 | 904.3 | 884.7 | 880.6 | 877.4 | 45- 50 | 377.0 | 2657 | 61.7,61.7 |
| 55 | 780.1 | 746.7 | 759.5 | 751.8 | 790.3 | 770.1 | 780.8 | 763.1 | 50- 55 | 358.3 | 3015 | 70,70 |
| 60 | 660.4 | 633.6 | 658.7 | 638.3 | 669.4 | 657.0 | 680.9 | 650.7 | 55- 60 | 329.4 | 3345 | 77.6,77.6 |
| 65 | 535.9 | 523.1 | 549.3 | 526.3 | 539.4 | 545.8 | 567.7 | 540.4 | 60- 65 | 290.7 | 3635 | 84.4,84.4 |
| 70 | 406.8 | 414.1 | 440.0 | 415.9 | 407.8 | 433.9 | 454.5 | 429.7 | 65- 70 | 243.4 | 3879 | 90,90 |
| 75 | 279.6 | 307.3 | 330.6 | 308.1 | 279.7 | 321.4 | 341.3 | 318.5 | 70- 75 | 190.4 | 4069 | 94.4,94.4 |
| 80 | 162.3 | 203.5 | 221.3 | 203.9 | 161.9 | 212.3 | 228.1 | 210.9 | 75- 80 | 134.5 | 4204 | 97.6,97.6 |
| 85 | 60.09 | 102.5 | 111.9 | 102.4 | 58.90 | 106.2 | 114.9 | 105.8 | 80- 85 | 78.94 | 4283 | 99.4,99.4 |
| 90 | 1.895 | 2.763 | 2.570 | 2.610 | 1.767 | 1.691 | 1.639 | 2.037 | 85- 90 | 26.15 | 4309 | 100,100 |
| 95 | | | | | | | | | 90- 95 | | | |
| 100 | | | | | | | | | 95-100 | | | |
| 105 | | | | | | | | | 100-105 | | | |
| 110 | | | | | | | | | 105-110 | | | |
| 115 | | | | | | | | | 110-115 | | | |
| 120 | | | | | | | | | 115-120 | | | |
| 125 | | | | | | | | | 120-125 | | | |
| 130 | | | | | | | | | 125-130 | | | |
| 135 | | | | | | | | | 130-135 | | | |
| 140 | | | | | | | | | 135-140 | | | |
| 145 | | | | | | | | | 140-145 | | | |
| 150 | | | | | | | | | 145-150 | | | |
| 155 | | | | | | | | | 150-155 | | | |
| 160 | | | | | | | | | 155-160 | | | |
| 165 | | | | | | | | | 160-165 | | | |
| 170 | | | | | | | | | 165-170 | | | |
| 175 | | | | | | | | | 170-175 | | | |
| 180 | | | | | | | | | 175-180 | | | |
| DEG | LUMINOUS INTENSITY:cd | | | | | | | | UNIT:lm | | | |

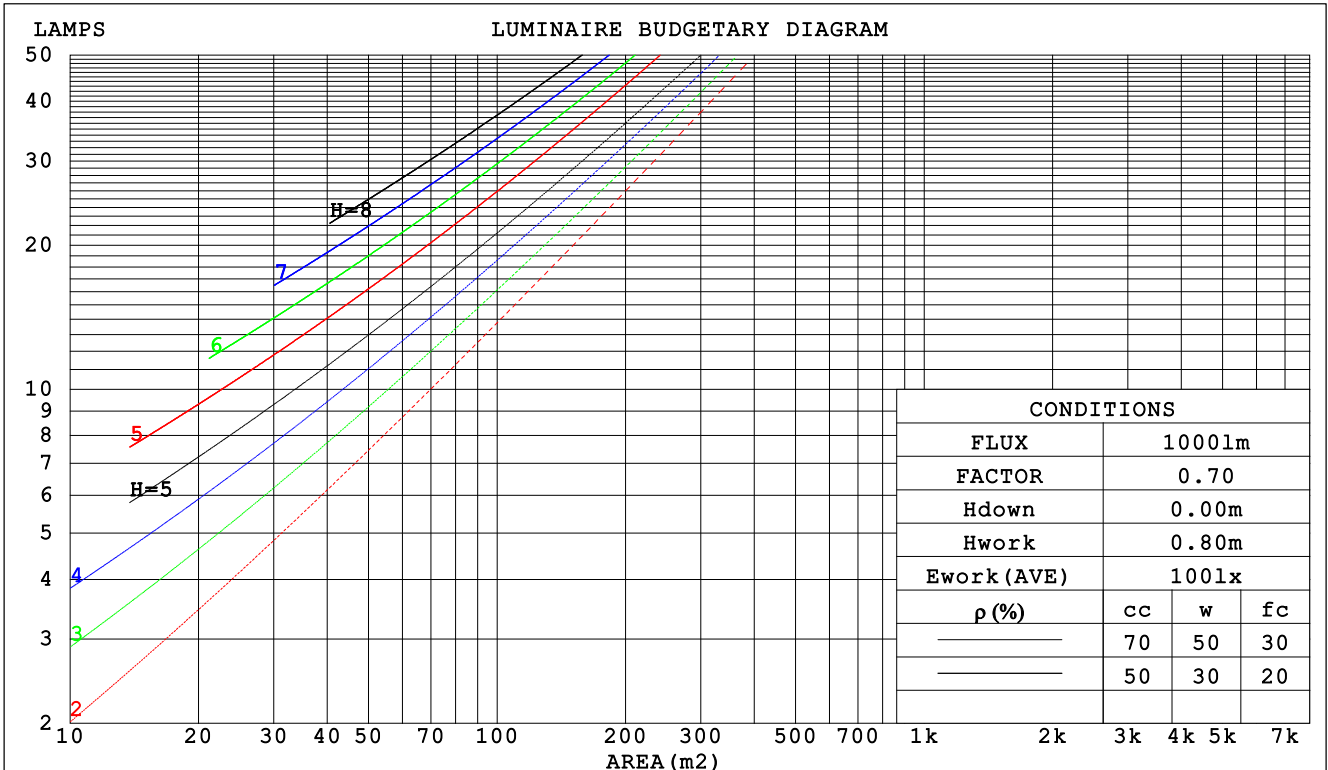
C Range: 0 - 360DEG
 C Interval: 5.0DEG
 Test Speed: HIGH
 Temperature:25.3DEG
 Operators:DAMIN
 Test Date:2019-10-30

γ Range: 0 - 90DEG
 γ Interval: 0.5DEG
 Test System:EVERFINE GO-2000A_V1 SYSTEM V2.0.286
 Humidity:65.0%
 Test Distance:9.646m [K=1.0000]
 Remarks:

CU AND LUMINAIRE BUDGETARY ESTIMATE DIAGRAM

| | | |
|---|-------|-------------------|
| Test:U:120.1V I:0.3423A P:40.94W PF:0.9960 Lamp Flux:4308.76x1 lm | | |
| NAME: | TYPE: | WEIGHT: |
| SPEC.: | DIM.: | SERIAL No.: |
| MFR.: | SUR.: | PROTECTION ANGLE: |

| ρcc | 80% | | | 70% | | | 50% | | | 30% | | | 10% | | | 0 |
|------|---------------------------------|------|------|------|------|------|------|------|------|------|------|------|------|------|------|------|
| ρw | 50% | 30% | 10% | 50% | 30% | 10% | 50% | 30% | 10% | 50% | 30% | 10% | 50% | 30% | 10% | 0 |
| ρfc | 20% | | | 20% | | | 20% | | | 20% | | | 20% | | | 0 |
| RCR | RCR:Room Cavity Ratio | | | | | | | | | | | | | | | |
| | Coefficients of Utilization(CU) | | | | | | | | | | | | | | | |
| 0.0 | 1.19 | 1.19 | 1.19 | 1.16 | 1.16 | 1.16 | 1.11 | 1.11 | 1.11 | 1.06 | 1.06 | 1.06 | 1.02 | 1.02 | 1.02 | 1.00 |
| 1.0 | 1.03 | .99 | .95 | 1.01 | .97 | .93 | .97 | .94 | .90 | .93 | .90 | .88 | .89 | .87 | .85 | .83 |
| 2.0 | .90 | .83 | .77 | .88 | .82 | .76 | .84 | .79 | .74 | .81 | .77 | .73 | .78 | .74 | .71 | .69 |
| 3.0 | .79 | .70 | .64 | .77 | .69 | .63 | .74 | .68 | .62 | .71 | .66 | .61 | .69 | .64 | .60 | .58 |
| 4.0 | .70 | .61 | .54 | .68 | .60 | .54 | .66 | .59 | .53 | .64 | .57 | .52 | .61 | .56 | .51 | .49 |
| 5.0 | .62 | .53 | .46 | .61 | .53 | .46 | .59 | .51 | .46 | .57 | .50 | .45 | .55 | .49 | .45 | .42 |
| 6.0 | .56 | .47 | .40 | .55 | .46 | .40 | .53 | .46 | .40 | .52 | .45 | .40 | .50 | .44 | .39 | .37 |
| 7.0 | .51 | .42 | .36 | .50 | .42 | .36 | .48 | .41 | .35 | .47 | .40 | .35 | .46 | .39 | .35 | .33 |
| 8.0 | .46 | .38 | .32 | .46 | .37 | .32 | .44 | .37 | .32 | .43 | .36 | .31 | .42 | .36 | .31 | .29 |
| 9.0 | .42 | .34 | .29 | .42 | .34 | .29 | .41 | .33 | .28 | .40 | .33 | .28 | .39 | .33 | .28 | .26 |
| 10.0 | .39 | .31 | .26 | .39 | .31 | .26 | .38 | .31 | .26 | .37 | .30 | .26 | .36 | .30 | .25 | .24 |



C Range: 0 - 360DEG
 C Interval: 5.0DEG
 Test Speed: HIGH
 Temperature:25.3DEG
 Operators:DAMIN
 Test Date:2019-10-30

γ Range: 0 - 90DEG
 γ Interval: 0.5DEG
 Test System:EVERFINE GO-2000A_V1 SYSTEM V2.0.286
 Humidity:65.0%
 Test Distance:9.646m [K=1.0000]
 Remarks:

WEC AND CCEC

| | | | | | | | | | | | | |
|---|--|--|--|-------|--|--|--|-------------------|--|--|--|--|
| Test:U:120.1V I:0.3423A P:40.94W PF:0.9960 Lamp Flux:4308.76x1 lm | | | | | | | | | | | | |
| NAME: | | | | TYPE: | | | | WEIGHT: | | | | |
| SPEC.: | | | | DIM.: | | | | SERIAL No.: | | | | |
| MFR.: | | | | SUR.: | | | | PROTECTION ANGLE: | | | | |

| ρcc | 80% | | | 70% | | | 50% | | | 30% | | | 10% | | | 0 |
|------|-----------------------|------|------|------|------|------|----------------------------------|------|------|------|------|------|------|------|------|---|
| ρw | 50% | 30% | 10% | 50% | 30% | 10% | 50% | 30% | 10% | 50% | 30% | 10% | 50% | 30% | 10% | 0 |
| ρfc | 20% | | | 20% | | | 20% | | | 20% | | | 20% | | | 0 |
| RCR | RCR:Room Cavity Ratio | | | | | | Wall Exitance Coefficients (WEC) | | | | | | | | | |
| 0.0 | | | | | | | | | | | | | | | | |
| 1.0 | .318 | .181 | .057 | .311 | .178 | .056 | .298 | .171 | .055 | .286 | .165 | .053 | .274 | .159 | .051 | |
| 2.0 | .297 | .163 | .050 | .291 | .160 | .049 | .279 | .155 | .048 | .268 | .150 | .047 | .258 | .146 | .046 | |
| 3.0 | .274 | .146 | .044 | .268 | .144 | .043 | .258 | .140 | .042 | .248 | .136 | .042 | .239 | .132 | .041 | |
| 4.0 | .252 | .131 | .038 | .247 | .129 | .038 | .238 | .126 | .038 | .229 | .123 | .037 | .221 | .120 | .037 | |
| 5.0 | .232 | .118 | .034 | .228 | .117 | .034 | .220 | .114 | .034 | .212 | .112 | .033 | .205 | .110 | .033 | |
| 6.0 | .215 | .108 | .031 | .211 | .107 | .031 | .204 | .105 | .030 | .197 | .102 | .030 | .191 | .100 | .030 | |
| 7.0 | .200 | .099 | .028 | .197 | .098 | .028 | .190 | .096 | .028 | .184 | .094 | .027 | .178 | .093 | .027 | |
| 8.0 | .187 | .091 | .026 | .184 | .090 | .026 | .178 | .089 | .025 | .172 | .087 | .025 | .167 | .086 | .025 | |
| 9.0 | .175 | .085 | .024 | .172 | .084 | .024 | .167 | .082 | .023 | .162 | .081 | .023 | .157 | .080 | .023 | |
| 10.0 | .164 | .079 | .022 | .162 | .078 | .022 | .157 | .077 | .022 | .153 | .076 | .022 | .148 | .075 | .021 | |

| ρcc | 80% | | | 70% | | | 50% | | | 30% | | | 10% | | | 0 |
|------|-----------------------|------|------|------|------|------|---|------|------|------|------|------|------|------|------|---|
| ρw | 50% | 30% | 10% | 50% | 30% | 10% | 50% | 30% | 10% | 50% | 30% | 10% | 50% | 30% | 10% | 0 |
| ρfc | 20% | | | 20% | | | 20% | | | 20% | | | 20% | | | 0 |
| RCR | RCR:Room Cavity Ratio | | | | | | Ceiling Cavity Exitance Coefficients (CCEC) | | | | | | | | | |
| 0.0 | .190 | .190 | .190 | .163 | .163 | .163 | .111 | .111 | .111 | .064 | .064 | .064 | .020 | .020 | .020 | |
| 1.0 | .181 | .156 | .134 | .155 | .134 | .115 | .106 | .092 | .080 | .061 | .053 | .046 | .020 | .017 | .015 | |
| 2.0 | .173 | .132 | .097 | .148 | .114 | .084 | .102 | .079 | .059 | .059 | .046 | .034 | .019 | .015 | .011 | |
| 3.0 | .165 | .114 | .074 | .142 | .099 | .064 | .097 | .069 | .045 | .056 | .040 | .026 | .018 | .013 | .009 | |
| 4.0 | .157 | .101 | .058 | .135 | .087 | .050 | .093 | .061 | .035 | .054 | .036 | .021 | .017 | .012 | .007 | |
| 5.0 | .150 | .091 | .047 | .129 | .078 | .041 | .089 | .055 | .029 | .051 | .032 | .017 | .017 | .010 | .006 | |
| 6.0 | .143 | .082 | .039 | .123 | .071 | .034 | .085 | .050 | .024 | .049 | .029 | .014 | .016 | .010 | .005 | |
| 7.0 | .136 | .075 | .033 | .117 | .065 | .029 | .081 | .046 | .020 | .047 | .027 | .012 | .015 | .009 | .004 | |
| 8.0 | .129 | .070 | .029 | .111 | .060 | .025 | .077 | .042 | .018 | .045 | .025 | .011 | .014 | .008 | .003 | |
| 9.0 | .123 | .065 | .025 | .106 | .056 | .022 | .074 | .039 | .016 | .043 | .023 | .009 | .014 | .008 | .003 | |
| 10.0 | .117 | .060 | .022 | .101 | .052 | .020 | .070 | .037 | .014 | .041 | .022 | .008 | .013 | .007 | .003 | |

C Range: 0 - 360DEG
 C Interval: 5.0DEG
 Test Speed: HIGH
 Temperature:25.3DEG
 Operators:DAMIN
 Test Date:2019-10-30

γ Range: 0 - 90DEG
 γ Interval: 0.5DEG
 Test System:EVERFINE GO-2000A_V1 SYSTEM V2.0.286
 Humidity:65.0%
 Test Distance:9.646m [K=1.0000]
 Remarks:

UGR(Unified Glare Rating) Table

| | | | | | | | | | | |
|---|------------------|------|------|------|-------|----------------|------|-------------------|------|------|
| Test:U:120.1V I:0.3423A P:40.94W PF:0.9960 Lamp Flux:4308.76x1 lm | | | | | | | | | | |
| NAME: | | | | | TYPE: | | | WEIGHT: | | |
| SPEC.: | | | | | DIM.: | | | SERIAL No.: | | |
| MFR.: | | | | | SUR.: | | | PROTECTION ANGLE: | | |
| ceiling/cavity | 0.7 | 0.7 | 0.5 | 0.5 | 0.3 | 0.7 | 0.7 | 0.5 | 0.5 | 0.3 |
| walls | 0.5 | 0.3 | 0.5 | 0.3 | 0.3 | 0.5 | 0.3 | 0.5 | 0.3 | 0.3 |
| working plane | 0.2 | 0.2 | 0.2 | 0.2 | 0.2 | 0.2 | 0.2 | 0.2 | 0.2 | 0.2 |
| Room dimensions | Viewed crosswise | | | | | Viewed endwise | | | | |
| x = 2H y = 2H | 17.8 | 19.3 | 18.0 | 19.5 | 19.7 | 17.7 | 19.3 | 18.0 | 19.5 | 19.7 |
| 3H | 19.3 | 20.7 | 19.6 | 20.9 | 21.2 | 19.5 | 20.9 | 19.8 | 21.1 | 21.3 |
| 4H | 19.8 | 21.2 | 20.2 | 21.4 | 21.7 | 20.2 | 21.6 | 20.5 | 21.8 | 22.1 |
| 6H | 20.2 | 21.5 | 20.5 | 21.8 | 22.0 | 20.8 | 22.1 | 21.2 | 22.4 | 22.7 |
| 8H | 20.3 | 21.5 | 20.6 | 21.8 | 22.1 | 21.1 | 22.3 | 21.4 | 22.6 | 22.9 |
| 12H | 20.3 | 21.5 | 20.7 | 21.8 | 22.1 | 21.3 | 22.5 | 21.6 | 22.7 | 23.1 |
| 4H 2H | 18.4 | 19.7 | 18.7 | 20.0 | 20.2 | 18.4 | 19.7 | 18.7 | 20.0 | 20.2 |
| 3H | 20.0 | 21.2 | 20.4 | 21.5 | 21.8 | 20.3 | 21.5 | 20.6 | 21.7 | 22.1 |
| 4H | 20.7 | 21.8 | 21.1 | 22.1 | 22.5 | 21.2 | 22.3 | 21.5 | 22.6 | 22.9 |
| 6H | 21.2 | 22.2 | 21.6 | 22.5 | 22.9 | 22.0 | 22.9 | 22.4 | 23.3 | 23.6 |
| 8H | 21.3 | 22.2 | 21.8 | 22.6 | 23.0 | 22.3 | 23.2 | 22.7 | 23.5 | 23.9 |
| 12H | 21.4 | 22.2 | 21.8 | 22.6 | 23.0 | 22.5 | 23.3 | 22.9 | 23.7 | 24.1 |
| 8H 4H | 21.1 | 22.0 | 21.5 | 22.3 | 22.7 | 21.5 | 22.4 | 21.9 | 22.7 | 23.1 |
| 6H | 21.7 | 22.5 | 22.2 | 22.9 | 23.3 | 22.4 | 23.2 | 22.9 | 23.6 | 24.0 |
| 8H | 22.0 | 22.6 | 22.4 | 23.0 | 23.5 | 22.9 | 23.5 | 23.3 | 24.0 | 24.4 |
| 12H | 22.1 | 22.7 | 22.6 | 23.1 | 23.6 | 23.2 | 23.8 | 23.7 | 24.3 | 24.7 |
| 12H 4H | 21.1 | 21.9 | 21.5 | 22.3 | 22.7 | 21.5 | 22.3 | 21.9 | 22.7 | 23.1 |
| 6H | 21.8 | 22.5 | 22.3 | 22.9 | 23.4 | 22.5 | 23.2 | 23.0 | 23.6 | 24.0 |
| 8H | 22.1 | 22.7 | 22.6 | 23.2 | 23.6 | 23.0 | 23.6 | 23.5 | 24.0 | 24.5 |
| Variations with the observer position at spacings: | | | | | | | | | | |
| S = 1.0H | + 0.2 / - 0.2 | | | | | + 0.1 / - 0.2 | | | | |
| 1.5H | + 0.1 / - 0.3 | | | | | + 0.2 / - 0.3 | | | | |
| 2.0H | + 0.2 / - 0.3 | | | | | + 0.1 / - 0.3 | | | | |

CIE Pub.117 Corrected 4309 lm Total Lamp Luminous Flux. (8log(F/F0) = 5.1)

C Range: 0 - 360DEG
 C Interval: 5.0DEG
 Test Speed: HIGH
 Temperature:25.3DEG
 Operators:DAMIN
 Test Date:2019-10-30

γ Range: 0 - 90DEG
 γ Interval: 0.5DEG
 Test System:EVERFINE GO-2000A_V1 SYSTEM V2.0.286
 Humidity:65.0%
 Test Distance:9.646m [K=1.0000]
 Remarks:

UTILIZATION FACTORS TABLE

| | | |
|---|-------|-------------------|
| Test:U:120.1V I:0.3423A P:40.94W PF:0.9960 Lamp Flux:4308.76x1 lm | | |
| NAME: | TYPE: | WEIGHT: |
| SPEC.: | DIM.: | SERIAL No.: |
| MFR.: | SUR.: | PROTECTION ANGLE: |

| REFLECTANCE | | | | | | | | | | |
|----------------------------------|--|-----|-----------|-----|-----|-----|---------------|-----|-----|--------|
| Ceiling | 0.8 | 0.8 | 0.8 | 0.7 | 0.7 | 0.7 | 0.5 | 0.5 | 0.5 | 0 |
| Walls | 0.7 | 0.5 | 0.3 | 0.7 | 0.5 | 0.3 | 0.7 | 0.5 | 0.3 | 0 |
| Working plane | 0.2 | 0.2 | 0.2 | 0.2 | 0.2 | 0.2 | 0.2 | 0.2 | 0.2 | 0 |
| ROOM INDEX | UTILIZATION FACTORS (PERCENT) $k(RI) \times RCR = 5$ | | | | | | | | | |
| k = 0.60 | 57 | 46 | 39 | 56 | 45 | 38 | 55 | 45 | 38 | 32 |
| 0.80 | 67 | 55 | 48 | 66 | 55 | 48 | 64 | 54 | 47 | 41 |
| 1.00 | 76 | 64 | 57 | 74 | 64 | 57 | 72 | 65 | 56 | 49 |
| 1.25 | 83 | 72 | 65 | 81 | 71 | 64 | 78 | 70 | 64 | 56 |
| 1.50 | 88 | 78 | 70 | 86 | 77 | 70 | 83 | 75 | 69 | 61 |
| 2.00 | 94 | 86 | 79 | 93 | 85 | 78 | 89 | 82 | 77 | 69 |
| 2.50 | 98 | 90 | 84 | 96 | 89 | 83 | 92 | 86 | 82 | 73 |
| 3.00 | 102 | 95 | 89 | 100 | 93 | 88 | 96 | 90 | 86 | 77 |
| 4.00 | 106 | 100 | 95 | 103 | 98 | 94 | 99 | 95 | 91 | 82 |
| 5.00 | 108 | 103 | 99 | 106 | 101 | 98 | 101 | 98 | 95 | 85 |
| ROOM INDEX | UF(total) | | | | | | | | | Direct |
| According to DIN EN 13032-2 2004 | | | Suspended | | | | SHRNOM = 1.25 | | | |

C Range: 0 - 360DEG
 C Interval: 5.0DEG
 Test Speed: HIGH
 Temperature:25.3DEG
 Operators:DAMIN
 Test Date:2019-10-30

γ Range: 0 - 90DEG
 γ Interval: 0.5DEG
 Test System:EVERFINE GO-2000A_V1 SYSTEM V2.0.286
 Humidity:65.0%
 Test Distance:9.646m [K=1.0000]
 Remarks:

ISOCANDELA DIAGRAM

| | | |
|---|-------|-------------------|
| Test:U:120.1V I:0.3423A P:40.94W PF:0.9960 Lamp Flux:4308.76x1 lm | | |
| NAME: | TYPE: | WEIGHT: |
| SPEC.: | DIM.: | SERIAL No.: |
| MFR.: | SUR.: | PROTECTION ANGLE: |

Conical surface Flux(90deg):

2280 lm

%lum = 52.9%

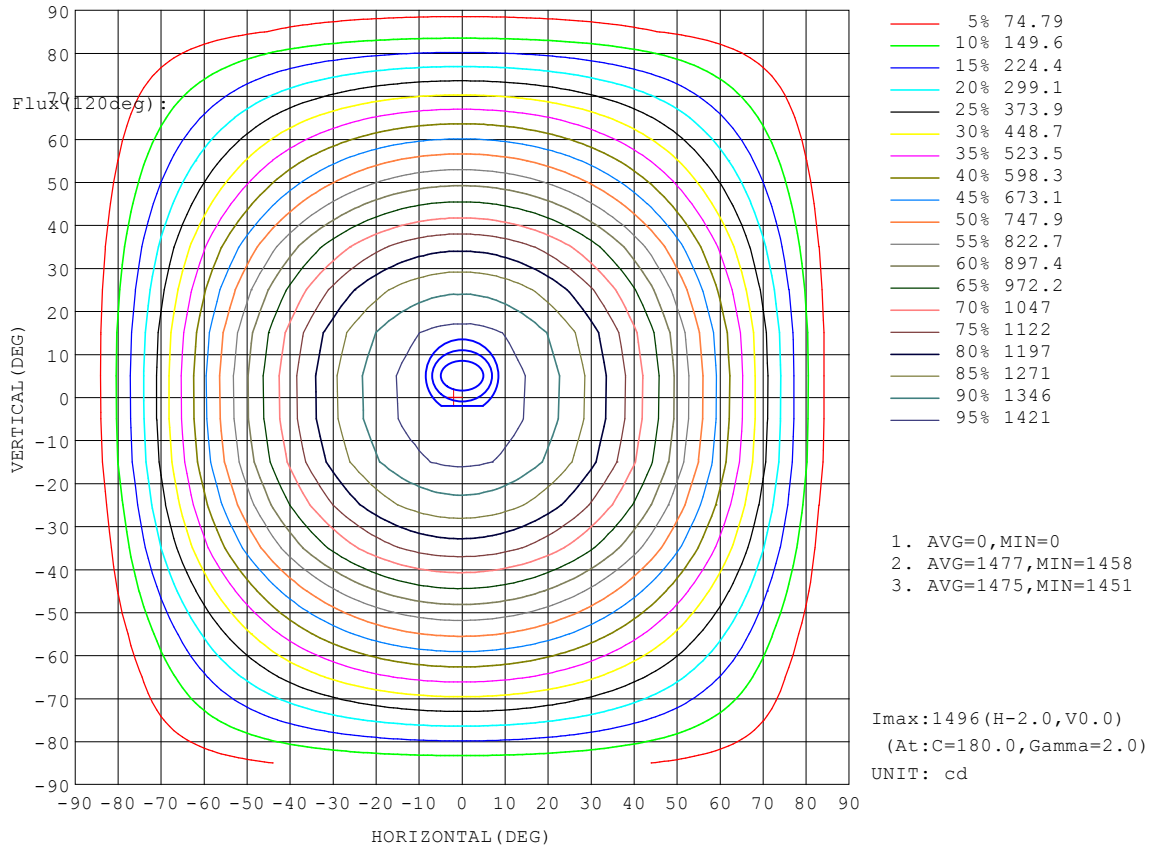
%lamp = 52.9%

Conical surface Flux(20deg):

3344.6 lm

%lum = 77.6%

%lamp = 77.6%

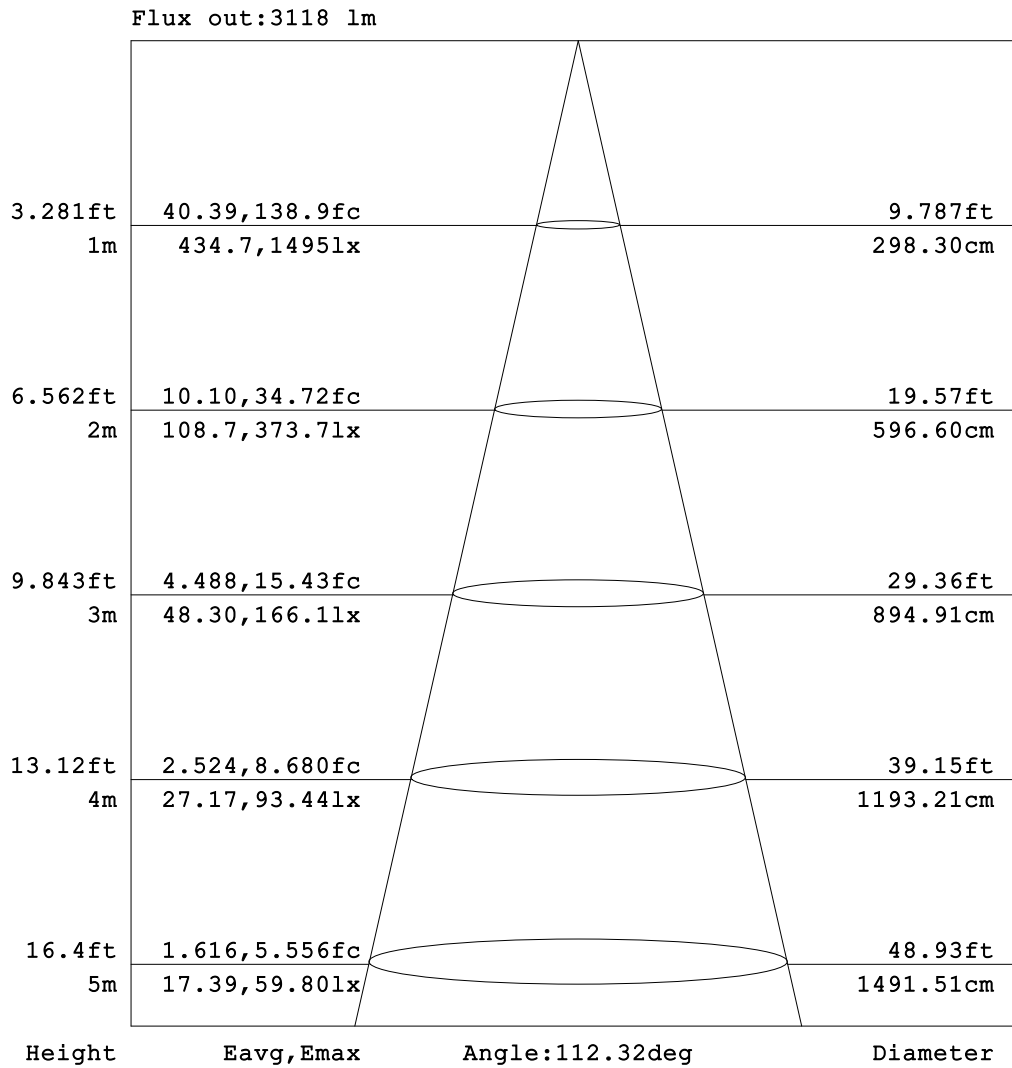


C Range: 0 - 360DEG
 C Interval: 5.0DEG
 Test Speed: HIGH
 Temperature:25.3DEG
 Operators:DAMIN
 Test Date:2019-10-30

γ Range: 0 - 90DEG
 γ Interval: 0.5DEG
 Test System:EVERFINE GO-2000A_V1 SYSTEM V2.0.286
 Humidity:65.0%
 Test Distance:9.646m [K=1.0000]
 Remarks:

AAI Figure

| | | |
|---|-------|-------------------|
| Test:U:120.1V I:0.3423A P:40.94W PF:0.9960 Lamp Flux:4308.76x1 lm | | |
| NAME: | TYPE: | WEIGHT: |
| SPEC.: | DIM.: | SERIAL No.: |
| MFR.: | SUR.: | PROTECTION ANGLE: |



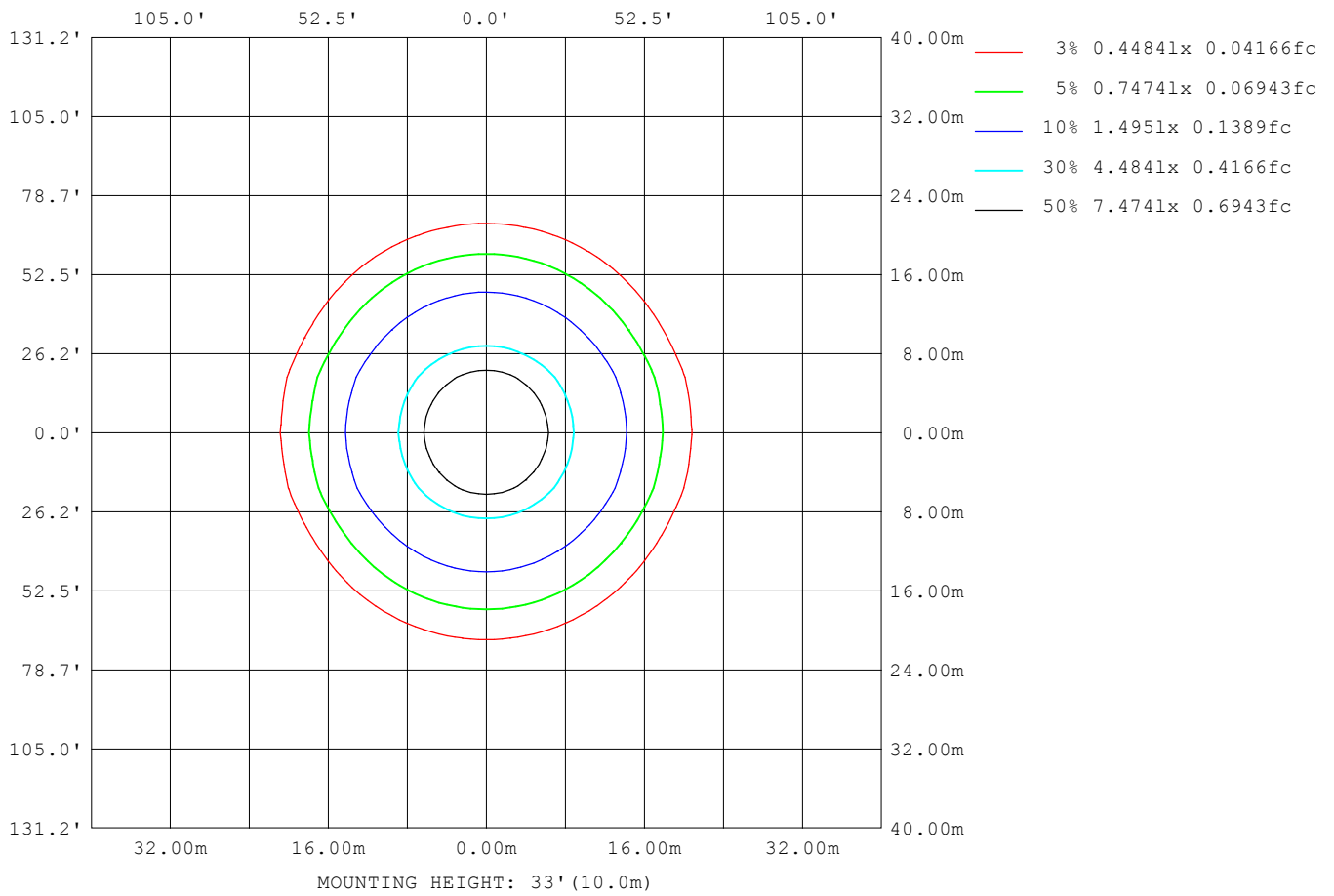
Note:The Curves indicate the illuminated area and the average illumination when the luminaire is at different distance.

C Range: 0 - 360DEG
 C Interval: 5.0DEG
 Test Speed: HIGH
 Temperature:25.3DEG
 Operators:DAMIN
 Test Date:2019-10-30

γ Range: 0 - 90DEG
 γ Interval: 0.5DEG
 Test System:EVERFINE GO-2000A_V1 SYSTEM V2.0.286
 Humidity:65.0%
 Test Distance:9.646m [K=1.0000]
 Remarks:

ISOLUX DIAGRAM

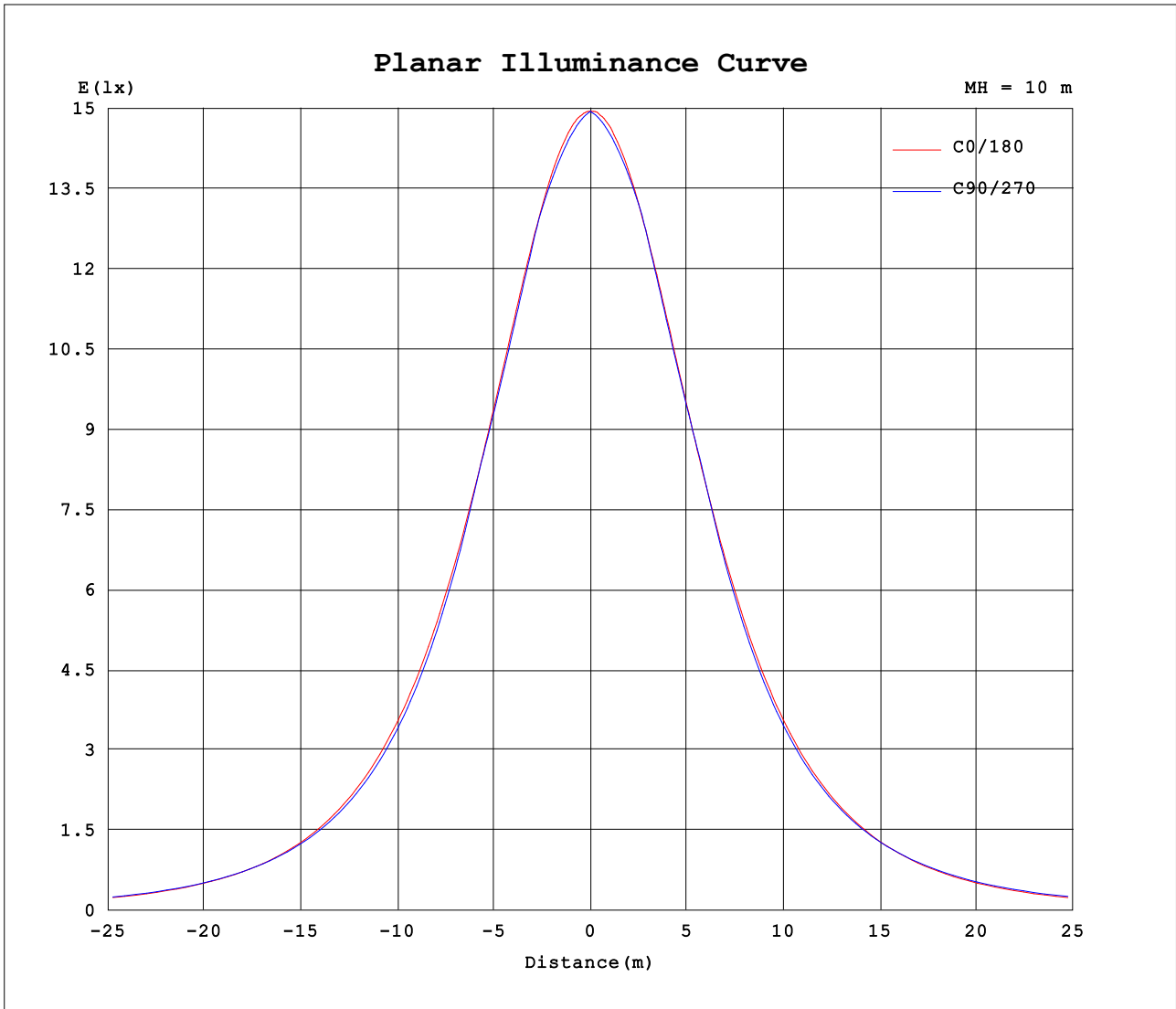
| | | |
|---|-------|-------------------|
| Test:U:120.1V I:0.3423A P:40.94W PF:0.9960 Lamp Flux:4308.76x1 lm | | |
| NAME: | TYPE: | WEIGHT: |
| SPEC.: | DIM.: | SERIAL No.: |
| MFR.: | SUR.: | PROTECTION ANGLE: |



C Range: 0 - 360DEG
 C Interval: 5.0DEG
 Test Speed: HIGH
 Temperature:25.3DEG
 Operators:DAMIN
 Test Date:2019-10-30

γ Range: 0 - 90DEG
 γ Interval: 0.5DEG
 Test System:EVERFINE GO-2000A_V1 SYSTEM V2.0.286
 Humidity:65.0%
 Test Distance:9.646m [K=1.0000]
 Remarks:

Planar Illuminance Curve



C Range: 0 - 360DEG
 C Interval: 5.0DEG
 Test Speed: HIGH
 Temperature: 25.3DEG
 Operators: DAMIN
 Test Date: 2019-10-30

γ Range: 0 - 90DEG
 γ Interval: 0.5DEG
 Test System: EVERFINE GO-2000A_V1 SYSTEM V2.0.286
 Humidity: 65.0%
 Test Distance: 9.646m [K=1.0000]
 Remarks:

