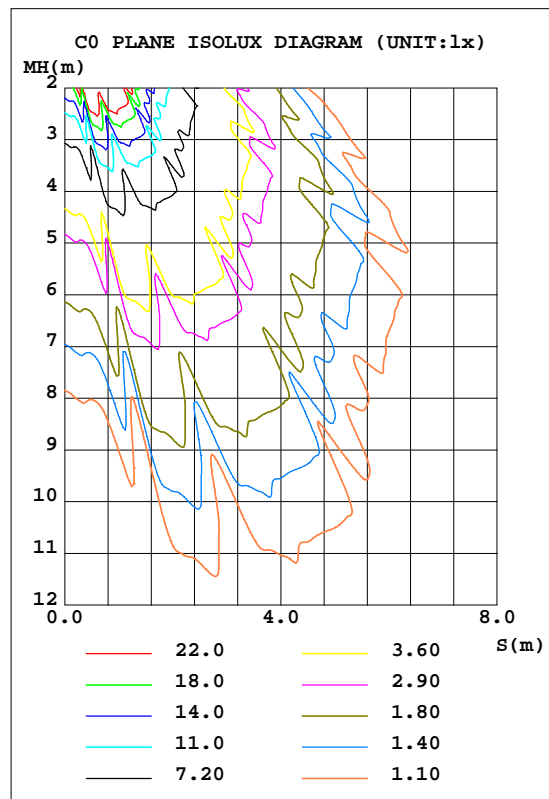
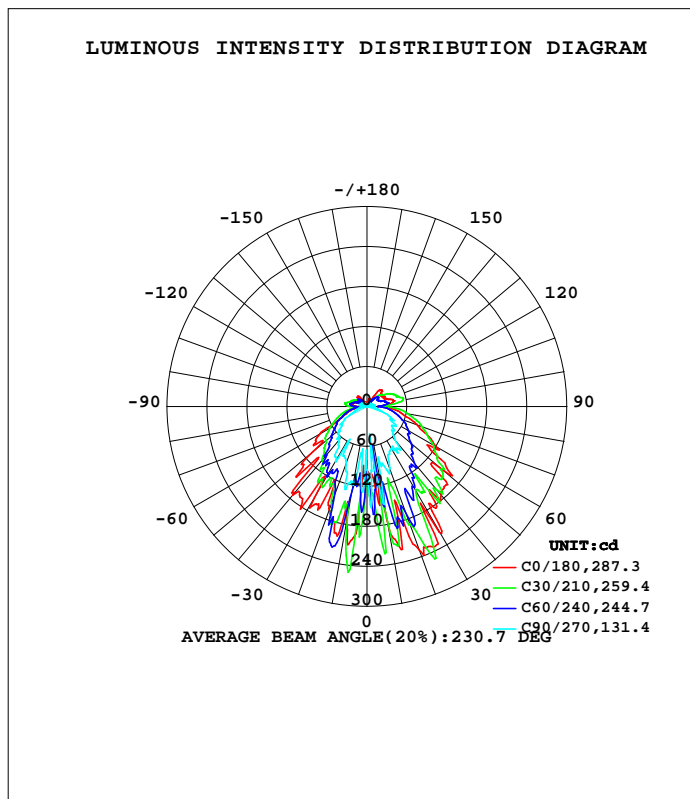


LUMINAIRE PHOTOMETRIC TEST REPORT

Test:U:119.99V I:0.0627A P:6.2666W PF:0.8328 Freq:59.98Hz Lamp Flux:452.313x1 lm		
NAME: LCFH	TYPE:	WEIGHT:
SPEC.:12W	DIM.:	SERIAL No.:
MFR.:	SUR.:	Shielding Angle:

DATA OF LAMP		PHOTOMETRIC DATA				Eff: 72.18 lm/W
MODEL	LCFH	I <sub>max</sub> (cd)	250.5	S/MH(C0/180)	1.72	
NOMINAL POWER(W)	6	LOR(%)	100.0	S/MH(C90/270)	1.02	
RATED VOLTAGE(V)	120	TOTAL FLUX(lm)	452.31	h UP, DN(C0-180)	8.2,43.8	
NOMINAL FLUX(lm)	452.313	CIE CLASS	SEMI-D.	h UP, DN(C180-360)	8.4,39.6	
LAMPS INSIDE	1	h up(%)	16.7	CIBSE SHR NOM	0.00	
TEST VOLTAGE(V)	120	h down(%)	83.3	CIBSE SHR MAX	1.00	



C Range: 0 - 360DEG  
 C Interval: 15.0DEG  
 Test Speed: MEDIUM  
 Temperature:25.3DEG  
 Operators:  
 Test Date:2020-12-30

g Range: 0 - 180DEG  
 g Interval: 0.5DEG  
 Test System:EVERFINE GO-SPEX500\_V1 SYSTEM V2.0.402  
 Humidity:65.0%  
 Test Distance:3.010m [K=1.0000]  
 Remarks:

ZONAL FLUX DIAGRAM

ZONAL FLUX DIAGRAM:

g	C0	C45	C90	C135	C180	C225	C270	C315	g	F zone	F total	%lum,lamp
10	170.5	64.38	149.5	78.64	178.8	209.7	120.3	64.06	0- 10	10.45	10.45	2.31,2.31
20	228.6	145.6	99.87	88.79	165.9	206.1	91.49	79.50	10- 20	35.71	46.16	10.2,10.2
30	217.9	160.4	73.25	65.71	159.2	133.5	94.32	71.49	20- 30	51.93	98.09	21.7,21.7
40	173.6	141.7	65.88	51.62	173.6	100.2	65.55	52.00	30- 40	59.76	157.9	34.9,34.9
50	144.2	133.5	51.36	40.36	107.4	93.20	54.77	51.93	40- 50	63.16	221.0	48.9,48.9
60	119.0	109.3	41.56	32.32	81.23	64.72	38.99	42.69	50- 60	57.44	278.5	61.6,61.6
70	79.80	80.63	27.56	21.83	34.43	47.35	18.85	32.52	60- 70	46.40	324.9	71.8,71.8
80	50.69	58.40	12.03	13.82	19.51	28.75	10.04	22.09	70- 80	33.02	357.9	79.1,79.1
90	19.02	27.46	4.586	9.255	14.40	25.58	7.307	10.15	80- 90	19.07	376.9	83.3,83.3
100	39.96	43.65	11.21	8.250	23.33	25.29	10.88	19.45	90-100	20.31	397.3	87.8,87.8
110	33.43	24.04	8.833	3.664	20.45	12.94	10.03	13.26	100-110	20.11	417.4	92.3,92.3
120	30.05	11.51	6.970	2.503	11.81	12.67	8.935	9.929	110-120	13.43	430.8	95.2,95.2
130	28.56	13.18	4.554	5.269	17.46	13.10	6.569	8.739	120-130	9.742	440.5	97.4,97.4
140	32.82	3.270	5.909	0.9936	20.08	1.177	6.578	2.164	130-140	7.777	448.3	99.1,99.1
150	7.126	1.138	3.171	0.4985	1.417	0.9101	1.366	0.4187	140-150	3.119	451.4	99.8,99.8
160	2.456	1.028	0.5702	0.4977	5.227	2.458	0.5059	0.3052	150-160	0.5140	451.9	99.9,99.9
170	2.027	0.6734	0.4944	0.2808	0.5972	0.5619	0.4018	0.2793	160-170	0.3287	452.3	100,100
180	0.6491	0.6592	0.4299	0.2944	0.6487	0.6592	0.4357	0.2925	170-180	0.0405	452.3	100,100
DEG	LUMINOUS INTENSITY:cd								UNIT:lm			

C Range: 0 - 360DEG  
 C Interval: 15.0DEG  
 Test Speed: MEDIUM  
 Temperature:25.3DEG  
 Operators:  
 Test Date:2020-12-30

g Range: 0 - 180DEG  
 g Interval: 0.5DEG  
 Test System:EVERFINE GO-SPEX500\_V1 SYSTEM V2.0.402  
 Humidity:65.0%  
 Test Distance:3.010m [K=1.0000]  
 Remarks:

UGR(Unified Glare Rating) Table

Test:U:119.99V I:0.0627A P:6.2666W PF:0.8328 Freq:59.98Hz Lamp Flux:452.313x1 lm										
NAME: LCFH					TYPE:			WEIGHT:		
SPEC.:12W					DIM.:			SERIAL No.:		
MFR.:					SUR.:			Shielding Angle:		
ceiling/cavity	0.7	0.7	0.5	0.5	0.3	0.7	0.7	0.5	0.5	0.3
walls	0.5	0.3	0.5	0.3	0.3	0.5	0.3	0.5	0.3	0.3
working plane	0.2	0.2	0.2	0.2	0.2	0.2	0.2	0.2	0.2	0.2
Room dimensions	Viewed crosswise					Viewed endwise				
x = 2H y = 2H	9.3	10.6	9.8	11.1	11.6	6.2	7.6	6.7	8.0	8.6
3H	11.3	12.6	11.9	13.1	13.6	7.8	9.0	8.3	9.5	10.1
4H	12.2	13.3	12.7	13.8	14.4	8.3	9.5	8.9	10.0	10.6
6H	13.0	14.1	13.6	14.6	15.2	8.8	9.9	9.4	10.4	11.0
8H	13.5	14.5	14.0	15.1	15.7	9.0	10.0	9.6	10.6	11.2
12H	13.9	14.9	14.5	15.5	16.1	9.2	10.2	9.8	10.8	11.4
4H 2H	9.7	10.9	10.3	11.4	12.0	7.6	8.8	8.2	9.3	9.9
3H	12.1	13.1	12.7	13.7	14.3	9.4	10.4	10.0	11.0	11.6
4H	13.2	14.1	13.8	14.7	15.3	10.2	11.1	10.8	11.7	12.4
6H	14.2	15.1	14.9	15.7	16.4	10.8	11.7	11.5	12.3	13.0
8H	14.8	15.6	15.5	16.2	16.9	11.1	11.9	11.8	12.5	13.3
12H	15.4	16.1	16.1	16.8	17.5	11.4	12.1	12.1	12.8	13.5
8H 4H	13.5	14.3	14.2	14.9	15.7	11.2	12.0	11.9	12.6	13.3
6H	15.0	15.6	15.6	16.3	17.0	12.3	12.9	12.9	13.6	14.3
8H	15.8	16.3	16.5	17.0	17.8	12.8	13.3	13.5	14.0	14.8
12H	16.6	17.1	17.3	17.8	18.6	13.2	13.7	14.0	14.4	15.2
12H 4H	13.6	14.3	14.2	14.9	15.7	11.4	12.1	12.1	12.8	13.5
6H	15.1	15.7	15.8	16.4	17.2	12.7	13.3	13.4	14.0	14.8
8H	16.0	16.5	16.8	17.2	18.0	13.4	13.9	14.1	14.6	15.4
Variations with the observer position at spacings:										
S = 1.0H	+ 0.2 / - 0.2					+ 0.1 / - 0.1				
1.5H	+ 0.3 / - 0.4					+ 0.2 / - 0.3				
2.0H	+ 0.3 / - 0.4					+ 0.3 / - 0.6				

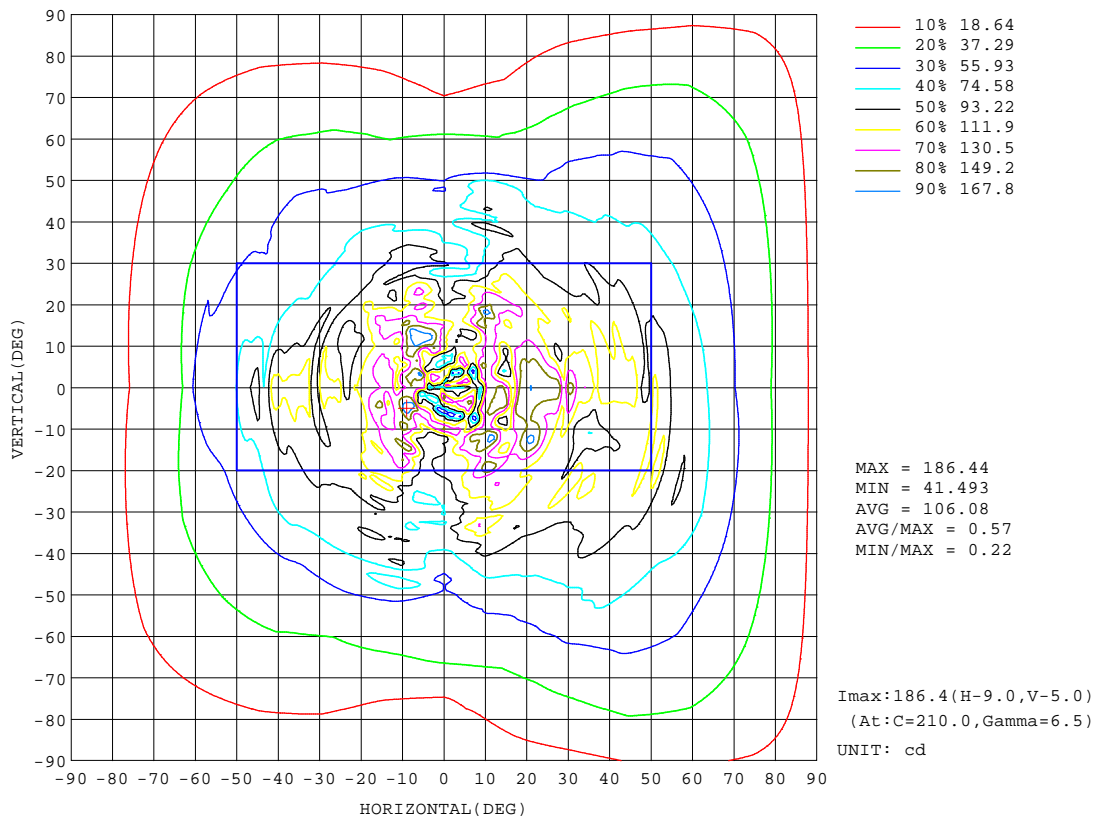
CIE Pub.117, 452.3 lm Total Lamp Luminous Flux Corrected (8log(F/F0) = -2.8)

C Range: 0 - 360DEG  
 C Interval: 15.0DEG  
 Test Speed: MEDIUM  
 Temperature:25.3DEG  
 Operators:  
 Test Date:2020-12-30

g Range: 0 - 180DEG  
 g Interval: 0.5DEG  
 Test System:EVERFINE GO-SPEX500\_V1 SYSTEM V2.0.402  
 Humidity:65.0%  
 Test Distance:3.010m [K=1.0000]  
 Remarks:

ISOCANDELA DIAGRAM

Test:U:119.99V I:0.0627A P:6.2666W PF:0.8328 Freq:59.98Hz Lamp Flux:452.313x1 lm		
NAME: LCFH	TYPE:	WEIGHT:
SPEC.:12W	DIM.:	SERIAL No.:
MFR.:	SUR.:	Shielding Angle:



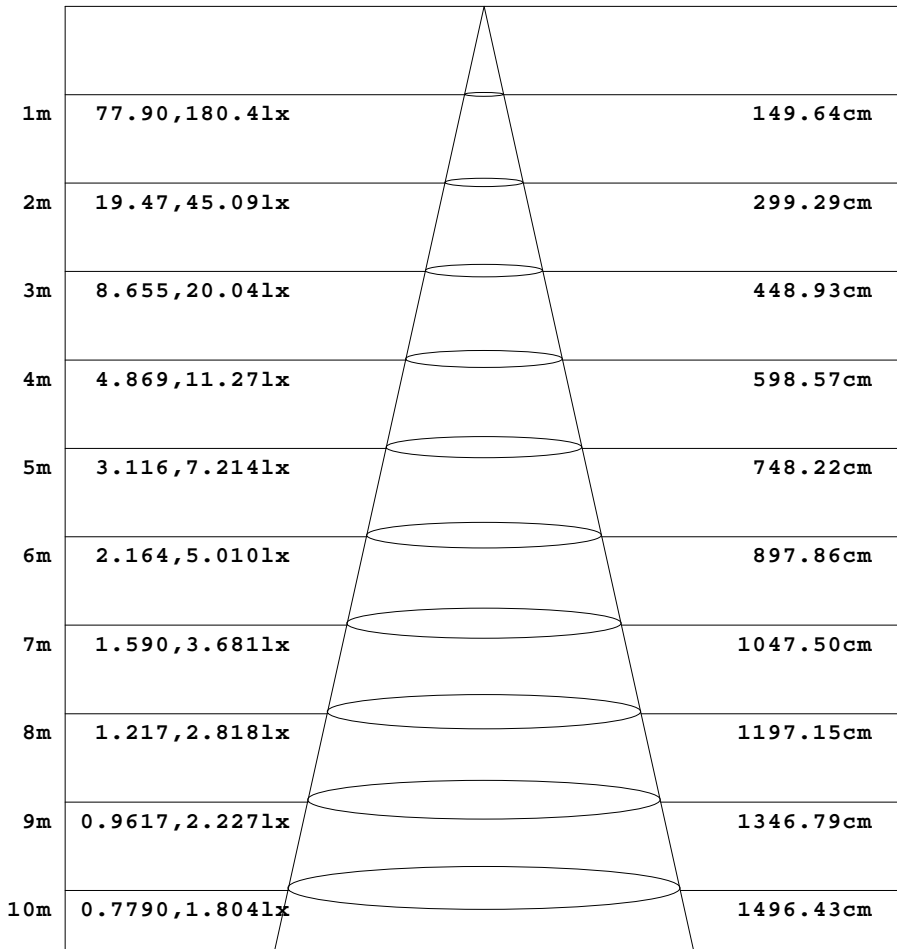
C Range: 0 - 360DEG  
 C Interval: 15.0DEG  
 Test Speed: MEDIUM  
 Temperature:25.3DEG  
 Operators:  
 Test Date:2020-12-30

g Range: 0 - 180DEG  
 g Interval: 0.5DEG  
 Test System:EVERFINE GO-SPEX500\_V1 SYSTEM V2.0.402  
 Humidity:65.0%  
 Test Distance:3.010m [K=1.0000]  
 Remarks:

**AAI Figure**

Test:U:119.99V I:0.0627A P:6.2666W PF:0.8328 Freq:59.98Hz Lamp Flux:452.313x1 lm		
NAME: LCFH	TYPE:	WEIGHT:
SPEC.:12W	DIM.:	SERIAL No.:
MFR.: LiBo	SUR.:	Shielding Angle:

Flux out:139.0 lm



Height                      Eavg, Emax                      Angle:73.61deg                      Diameter

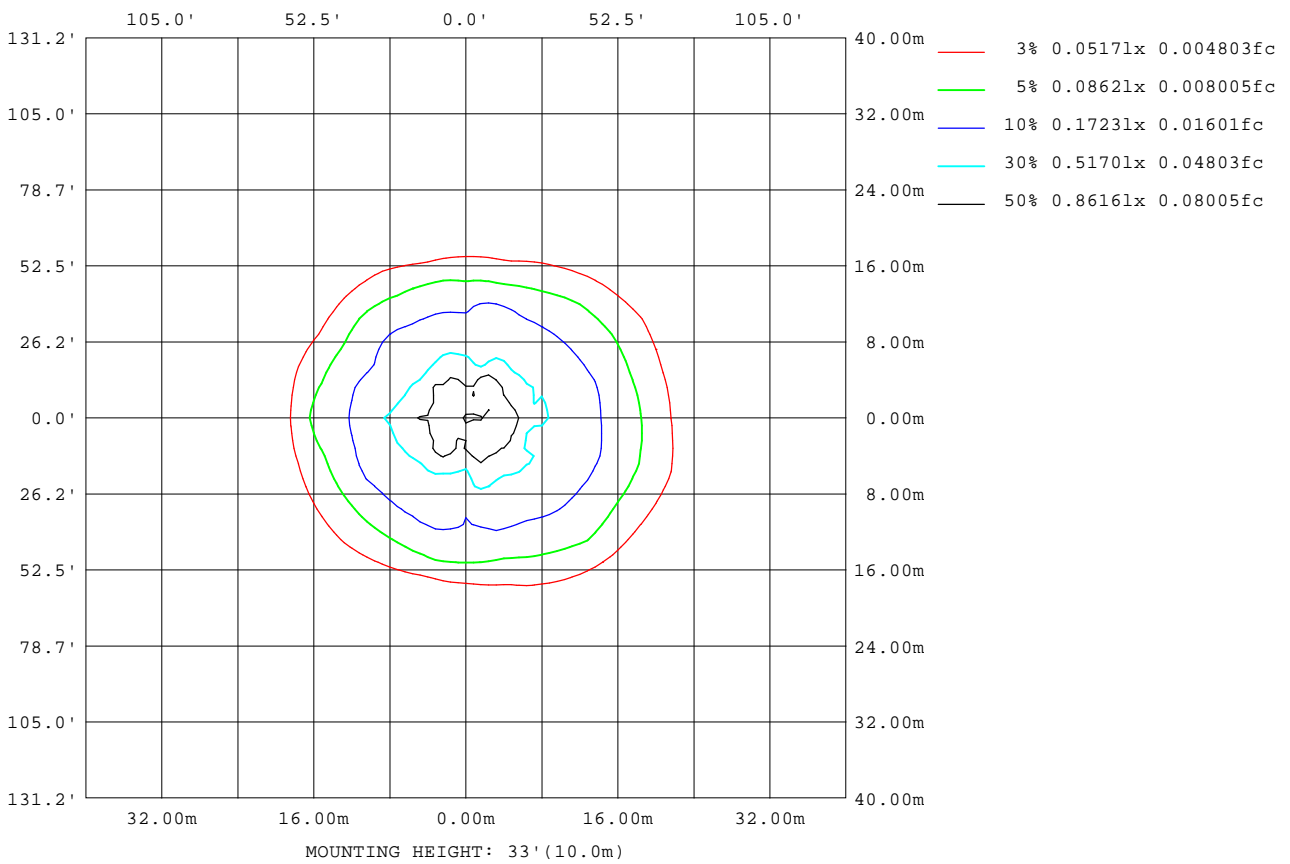
Note:The Curves indicate the illuminated area and the average illumination when the luminaire is at different distance.

C Range: 0 - 360DEG  
 C Interval: 15.0DEG  
 Test Speed: MEDIUM  
 Temperature:25.3DEG  
 Operators:  
 Test Date:2020-12-30

g Range: 0 - 180DEG  
 g Interval: 0.5DEG  
 Test System:EVERFINE GO-SPEX500\_V1 SYSTEM V2.0.402  
 Humidity:65.0%  
 Test Distance:3.010m [K=1.0000]  
 Remarks:

**ISOLUX DIAGRAM**

Test:U:119.99V I:0.0627A P:6.2666W PF:0.8328 Freq:59.98Hz Lamp Flux:452.313x1 lm		
NAME: LCFH	TYPE:	WEIGHT:
SPEC.:12W	DIM.:	SERIAL No.:
MFR.:	SUR.:	Shielding Angle:



**C Range: 0 - 360DEG**  
**C Interval: 15.0DEG**  
**Test Speed: MEDIUM**  
**Temperature:25.3DEG**  
**Operators:**  
**Test Date:2020-12-30**

**g Range: 0 - 180DEG**  
**g Interval: 0.5DEG**  
**Test System:EVERFINE GO-SPEX500\_V1 SYSTEM V2.0.402**  
**Humidity:65.0%**  
**Test Distance:3.010m [K=1.0000]**  
**Remarks:**

LED Avg.L Report

Test:U:119.99V I:0.0627A P:6.2666W PF:0.8328 Freq:59.98Hz Lamp Flux:452.313x1 lm		
NAME: LCFH	TYPE:	WEIGHT:
SPEC.:12W	DIM.:	SERIAL No.:
MFR.:	SUR.:	Shielding Angle:

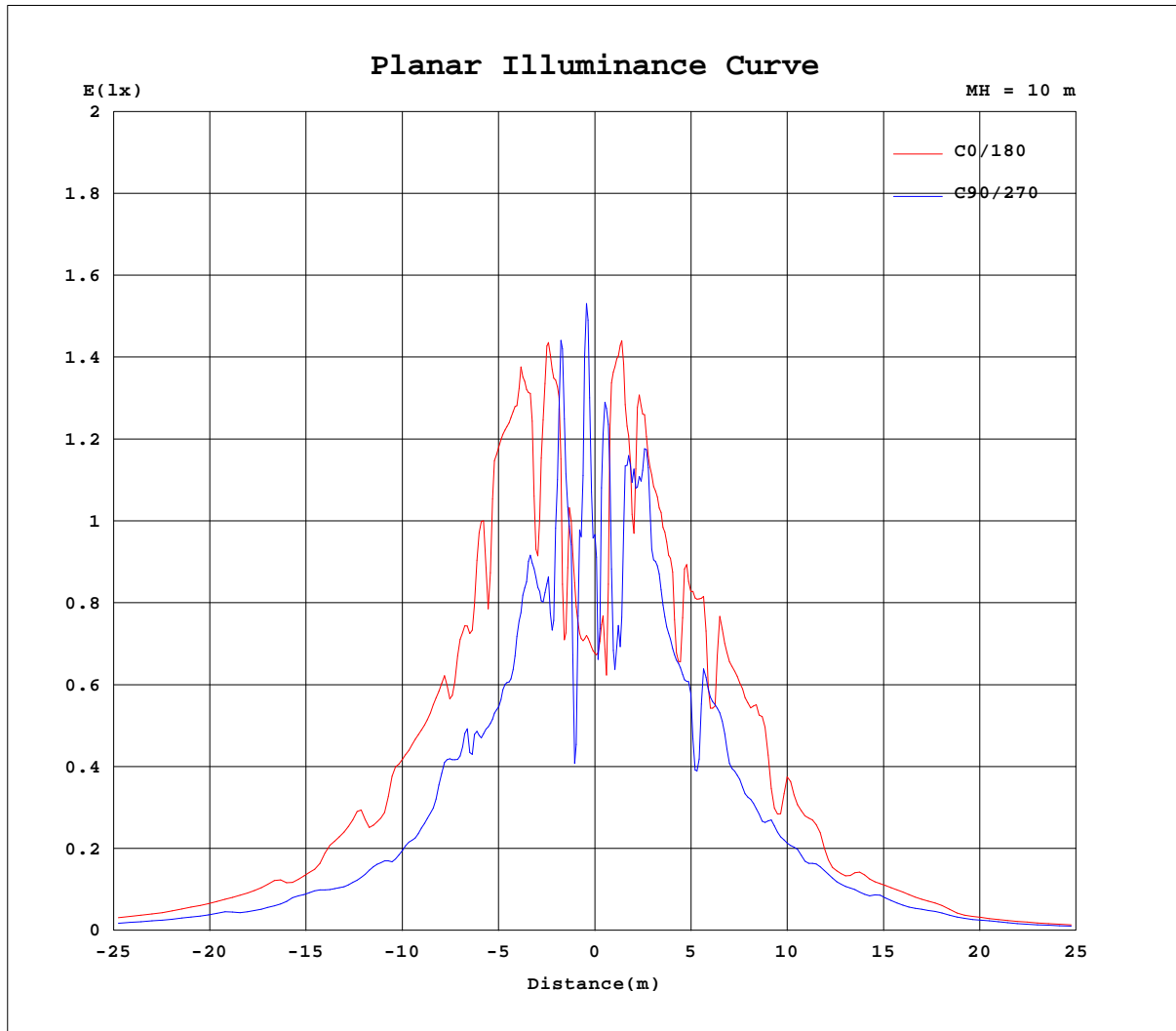
AvgL	cd/m2
L_0~180(65)av	345
L_0~180(75)av	346
L_0~180(85)av	543
L_90~270(65)av	156
L_90~270(75)av	124
L_90~270(85)av	158
L_45(65)av	251
L_45(75)av	296
L_45(85)av	496

Standard: GB/T 29293-2012

C Range: 0 - 360DEG  
 C Interval: 15.0DEG  
 Test Speed: MEDIUM  
 Temperature:25.3DEG  
 Operators:  
 Test Date:2020-12-30

g Range: 0 - 180DEG  
 g Interval: 0.5DEG  
 Test System:EVERFINE GO-SPEX500\_V1 SYSTEM V2.0.402  
 Humidity:65.0%  
 Test Distance:3.010m [K=1.0000]  
 Remarks:

Planar Illuminance Curve



C Range: 0 - 360DEG  
 C Interval: 15.0DEG  
 Test Speed: MEDIUM  
 Temperature: 25.3DEG  
 Operators:  
 Test Date: 2020-12-30

g Range: 0 - 180DEG  
 g Interval: 0.5DEG  
 Test System: EVERFINE GO-SPEX500\_V1 SYSTEM V2.0.402  
 Humidity: 65.0%  
 Test Distance: 3.010m [K=1.0000]  
 Remarks:



LUMINOUS DISTRIBUTION INTENSITY DATA

Test:U:119.99V I:0.0627A P:6.2666W PF:0.8328 Freq:59.98Hz Lamp Flux:452.313x1 lm		
NAME: LCFH	TYPE:	WEIGHT:
SPEC.:12W	DIM.:	SERIAL No.:
MFR.:	SUR.:	Shielding Angle:

Table--1

UNIT: cd

C(DEG) g (DEG)	0	15	30	45	60	75	90	105	120	135	150	165	180	195	210	225	240	255	270
0	95.8	95.8	95.8	95.8	95.8	95.8	95.8	95.8	95.8	95.8	95.8	95.8	95.8	95.8	95.8	95.8	95.8	95.8	95.8
5	107	139	161	197	136	104	77.1	45.2	62.7	61.2	59.3	64.3	191	196	160	157	114	78.2	88.5
10	171	178	161	64.4	153	136	149	128	75.7	78.6	141	148	179	207	170	210	128	165	120
15	196	237	133	218	175	144	88.2	76.6	71.3	91.0	92.0	134	189	203	181	163	212	158	129
20	229	223	187	146	168	117	99.9	84.8	99.2	88.8	87.9	105	166	159	154	206	144	149	91.5
25	232	185	242	169	136	127	79.9	81.5	78.8	82.3	74.7	100	168	113	133	163	106	143	81.5
30	218	163	147	160	139	113	73.3	86.1	64.1	65.7	75.6	86.5	159	165	137	134	121	105	94.3
35	183	107	128	149	112	135	76.8	73.5	58.8	58.2	73.6	98.9	169	131	112	113	109	105	73.6
40	174	122	163	142	111	110	65.9	85.2	58.5	51.6	59.5	92.4	174	116	105	100	95.4	79.6	65.6
45	167	133	154	129	97.5	88.8	54.8	73.0	49.6	51.6	61.0	77.8	150	92.6	90.1	103	80.9	73.2	59.9
50	144	149	146	134	87.2	74.6	51.4	67.1	39.7	40.4	51.9	67.0	107	94.4	80.5	93.2	70.8	65.5	54.8
55	123	149	130	118	75.7	62.1	52.2	50.4	33.4	35.7	41.3	55.8	94.7	86.5	74.9	82.6	59.6	53.8	44.6
60	119	135	115	109	71.3	50.9	41.6	39.9	29.2	32.3	35.9	47.5	81.2	76.2	64.3	64.7	52.4	41.9	39.0
65	99.5	111	99.8	91.4	65.0	44.8	40.1	35.9	23.0	26.2	31.3	40.7	46.5	53.6	54.4	57.7	45.1	33.9	25.7
70	79.8	95.9	87.9	80.6	55.2	38.2	27.6	26.4	19.2	21.8	25.2	32.0	34.4	41.6	45.9	47.3	36.6	27.2	18.8
75	61.9	69.0	75.2	69.5	47.1	30.1	17.7	19.5	15.5	18.0	20.5	26.0	27.7	32.6	37.5	39.2	29.7	22.3	14.3
80	50.7	56.6	62.1	58.4	38.1	24.0	12.0	14.6	12.4	13.8	15.4	19.3	19.5	22.8	26.9	28.8	21.8	16.3	10.0
85	37.1	43.8	48.3	45.5	28.9	18.2	7.95	9.76	8.29	8.71	7.66	11.3	10.26	13.08	15.7	16.8	12.8	9.83	5.78
90	19.0	24.9	28.6	27.5	17.1	11.5	4.59	6.07	8.46	9.26	7.58	13.6	14.4	20.7	25.5	25.6	19.0	14.9	7.31
95	29.7	35.0	38.8	35.1	25.6	18.2	10.5	11.6	11.6	10.5	7.83	17.7	20.9	26.2	31.9	30.7	24.5	18.7	9.36
100	40.0	45.5	54.7	43.6	33.1	22.4	11.2	12.5	11.9	8.25	4.92	14.5	23.3	29.0	33.9	25.3	25.8	19.4	10.9
105	40.7	45.3	53.3	33.8	29.0	19.1	10.2	11.1	10.1	4.57	2.46	11.2	21.4	23.1	26.2	17.8	22.9	18.6	10.2
110	33.4	37.7	48.6	24.0	23.9	17.6	8.83	10.7	8.17	3.66	1.74	7.92	20.5	18.2	22.8	12.94	18.5	16.7	10.0
115	28.9	30.4	44.3	15.5	20.5	13.8	7.88	10.3	7.99	1.94	5.52	1.60	11.77	11.40	21.9	11.56	17.1	11.9	7.93
120	30.1	21.5	38.6	11.51	18.9	12.9	6.97	10.1	8.14	2.50	8.10	1.92	11.81	5.00	18.0	12.67	14.9	10.42	8.93
125	27.0	10.95	31.3	13.89	19.4	10.59	4.72	6.27	8.34	4.13	8.97	3.27	13.73	4.03	16.8	14.8	15.3	9.26	5.41
130	28.6	5.30	28.3	13.18	21.6	11.9	4.55	7.10	9.30	5.27	8.21	5.44	17.5	6.12	15.6	13.10	16.9	11.2	6.57
135	31.1	6.87	21.9	11.47	19.4	13.6	6.26	8.38	8.58	3.92	5.59	7.89	20.5	8.24	9.41	5.14	14.2	11.6	7.76
140	32.8	8.81	12.99	3.27	15.3	11.3	5.91	7.17	7.11	0.99	2.82	9.43	20.1	10.44	4.15	1.18	9.50	9.12	6.58
145	23.7	4.16	5.15	1.44	10.42	8.30	4.31	5.40	4.20	0.59	0.91	5.40	12.08	5.40	1.31	1.08	2.62	6.28	4.65
150	7.13	2.46	1.45	1.14	6.80	5.38	3.17	3.39	2.53	0.50	0.55	1.25	1.42	1.78	0.85	0.91	4.17	3.06	1.37
155	1.68	1.29	0.92	0.94	0.82	2.28	1.40	1.20	0.49	0.41	0.43	0.50	0.70	0.69	0.67	0.71	0.77	0.93	1.05
160	2.46	0.86	0.77	1.03	0.82	0.73	0.57	0.59	0.42	0.50	0.38	1.14	5.23	0.82	0.67	2.46	0.73	0.60	0.51
165	12.23	2.07	0.80	1.47	0.63	0.62	0.59	0.54	0.32	0.60	0.39	3.32	5.53	2.70	0.86	2.02	0.55	0.49	0.47
170	2.03	0.73	0.73	0.67	0.56	0.53	0.49	0.48	0.29	0.28	0.32	0.43	0.60	0.58	0.57	0.56	0.47	0.44	0.40
175	0.63	0.64	0.64	0.60	0.49	0.45	0.40	0.40	0.27	0.29	0.29	0.38	0.54	0.53	0.55	0.58	0.48	0.43	0.39
180	0.65	0.62	0.64	0.66	0.54	0.49	0.43	0.42	0.28	0.29	0.32	0.41	0.65	0.62	0.65	0.66	0.54	0.49	0.44

C Range: 0 - 360DEG  
 C Interval: 15.0DEG  
 Test Speed: MEDIUM  
 Temperature:25.3DEG  
 Operators:  
 Test Date:2020-12-30

g Range: 0 - 180DEG  
 g Interval: 0.5DEG  
 Test System:EVERFINE GO-SPEX500\_V1 SYSTEM V2.0.402  
 Humidity:65.0%  
 Test Distance:3.010m [K=1.0000]  
 Remarks:

LUMINOUS DISTRIBUTION INTENSITY DATA

Test:U:119.99V I:0.0627A P:6.2666W PF:0.8328 Freq:59.98Hz Lamp Flux:452.313x1 lm		
NAME: LCFH	TYPE:	WEIGHT:
SPEC.:12W	DIM.:	SERIAL No.:
MFR.:	SUR.:	Shielding Angle:

Table--2

UNIT: cd

C(DEG) g (DEG)	285	300	315	330	345														
0	95.8	95.8	95.8	95.8	95.8														
5	125	57.9	35.1	80.1	136														
10	91.1	73.3	64.1	104	133														
15	97.9	57.0	92.3	95.1	69.0														
20	100	106	79.5	93.5	153														
25	110	93.1	90.7	84.4	127														
30	70.0	76.9	71.5	83.3	95.9														
35	67.8	68.1	62.6	80.6	105														
40	105	58.1	52.0	69.3	110														
45	89.0	49.6	58.2	70.9	100														
50	86.3	44.8	51.9	67.0	87.3														
55	48.9	36.2	47.6	57.7	87.6														
60	39.0	33.1	42.7	54.4	73.2														
65	29.7	27.9	36.5	50.1	64.7														
70	23.5	23.8	32.5	42.5	56.2														
75	18.3	19.7	26.7	35.5	46.5														
80	13.9	16.1	22.1	29.6	39.1														
85	8.67	11.2	15.5	21.0	28.3														
90	9.78	7.66	10.1	12.6	15.8														
95	13.0	12.9	17.6	22.3	28.8														
100	14.6	14.7	19.5	27.1	35.9														
105	13.6	13.3	15.4	27.7	31.8														
110	12.8	10.2	13.3	23.4	24.9														
115	10.5	9.52	11.9	19.8	18.2														
120	10.7	9.09	9.93	15.7	13.4														
125	7.88	9.08	10.1	11.7	8.13														
130	8.97	9.64	8.74	9.78	10.5														
135	9.34	8.40	6.39	7.81	14.4														
140	7.37	4.34	2.16	5.30	16.9														
145	4.81	0.64	0.48	1.19	11.1														
150	2.75	1.53	0.42	0.64	3.08														
155	0.84	0.36	0.34	0.40	1.04														
160	0.56	0.35	0.31	0.35	0.61														
165	0.46	0.28	0.29	0.35	4.46														
170	0.39	0.26	0.28	0.35	0.45														
175	0.38	0.24	0.26	0.31	0.39														
180	0.43	0.28	0.29	0.33	0.41														

C Range: 0 - 360DEG  
 C Interval: 15.0DEG  
 Test Speed: MEDIUM  
 Temperature:25.3DEG  
 Operators:  
 Test Date:2020-12-30

g Range: 0 - 180DEG  
 g Interval: 0.5DEG  
 Test System:EVERFINE GO-SPEX500\_V1 SYSTEM V2.0.402  
 Humidity:65.0%  
 Test Distance:3.010m [K=1.0000]  
 Remarks: