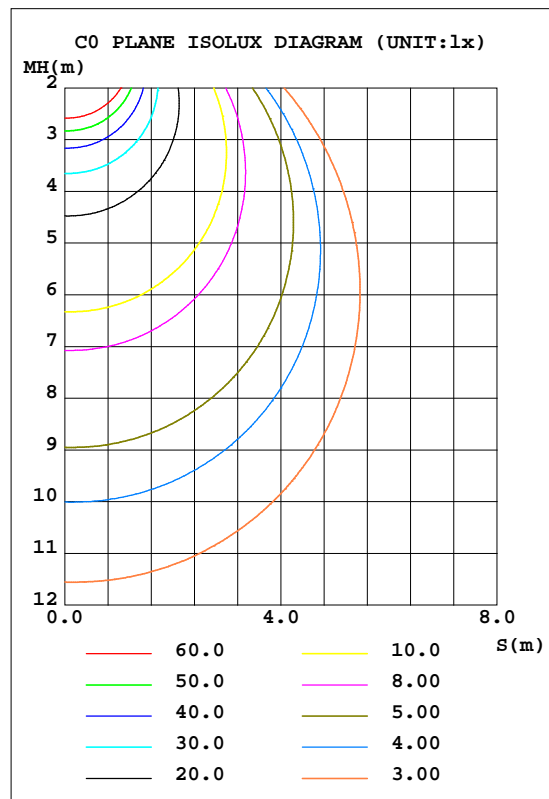
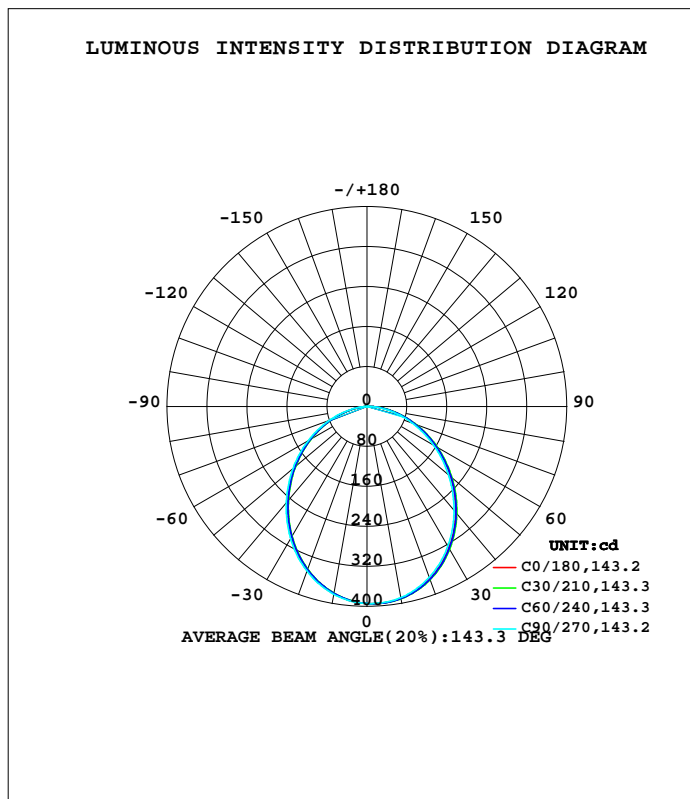


LUMINAIRE PHOTOMETRIC TEST REPORT

Test:U:120.08V I:0.1140A P:13.057W PF:0.9542 Freq:59.98Hz Lamp Flux:1015.35x1 lm		
NAME: LCFB	TYPE:	WEIGHT:
SPEC.:12W	DIM.:	SERIAL No.:
MFR.:	SUR.:	Shielding Angle:

DATA OF LAMP		PHOTOMETRIC DATA Eff: 77.77 lm/W			
MODEL	LCFB	I _{max} (cd)	395.1	S/MH(C0/180)	1.15
NOMINAL POWER(W)	12	LOR(%)	100.0	S/MH(C90/270)	1.16
RATED VOLTAGE(V)	120	TOTAL FLUX(lm)	1015.3	h UP, DN(C0-180)	0.3,51.7
NOMINAL FLUX(lm)	1015.35	CIE CLASS	DIRECT	h UP, DN(C180-360)	0.3,47.7
LAMPS INSIDE	1	h up(%)	0.6	CIBSE SHR NOM	1.25
TEST VOLTAGE(V)	120	h down(%)	99.4	CIBSE SHR MAX	1.35



C Range: 0 - 360DEG
 C Interval: 15.0DEG
 Test Speed: MEDIUM
 Temperature:25.3DEG
 Operators:
 Test Date:2020-12-30

g Range: 0 - 180DEG
 g Interval: 0.5DEG
 Test System:EVERFINE GO-SPEX500_V1 SYSTEM V2.0.402
 Humidity:65.0%
 Test Distance:3.010m [K=1.0000]
 Remarks:

ZONAL FLUX DIAGRAM

ZONAL FLUX DIAGRAM:

g	C0	C45	C90	C135	C180	C225	C270	C315	g	F zone	F total	%lum,lamp
10	389.8	391.1	388.5	384.5	380.7	379.0	381.7	385.6	0- 10	37.20	37.20	3.66,3.66
20	366.7	369.4	364.1	356.6	349.1	346.2	350.7	358.5	10- 20	105.3	142.5	14,14
30	327.6	331.2	323.4	313.4	303.2	299.2	305.6	315.9	20- 30	155.6	298.0	29.4,29.4
40	276.1	280.4	271.2	259.8	248.0	243.7	251.4	262.6	30- 40	180.8	478.8	47.2,47.2
50	218.4	222.9	213.1	202.1	189.7	185.0	193.6	204.4	40- 50	179.7	658.5	64.9,64.9
60	158.8	164.0	153.4	142.8	130.9	126.4	135.1	145.3	50- 60	155.7	814.2	80.2,80.2
70	100.6	105.4	95.66	78.70	74.64	71.82	78.86	88.67	60- 70	114.5	928.7	91.5,91.5
80	47.67	50.82	43.13	0.9316	25.55	23.59	29.09	37.52	70- 80	63.79	992.5	97.7,97.7
90	4.534	5.929	1.256	0.5627	0.3413	0.3608	0.3839	0.5502	80- 90	16.49	1009	99.4,99.4
100	0.5643	0.5613	0.5396	0.5988	0.5818	0.6066	0.6237	0.4247	90-100	0.6236	1010	99.4,99.4
110	0.9044	0.8100	0.7867	0.8778	0.8853	0.8930	0.8719	0.7428	100-110	0.7249	1010	99.5,99.5
120	1.229	1.084	1.075	1.051	1.155	1.132	1.116	1.051	110-120	0.9590	1011	99.6,99.6
130	1.442	1.301	1.286	1.258	1.302	1.311	1.340	1.282	120-130	1.081	1012	99.7,99.7
140	1.539	1.469	1.467	1.398	1.326	1.336	1.494	1.371	130-140	1.054	1013	99.8,99.8
150	1.518	1.467	1.560	1.348	1.246	1.226	1.460	1.290	140-150	0.8848	1014	99.9,99.9
160	1.398	1.303	1.347	1.132	1.066	0.9973	1.237	1.142	150-160	0.6131	1015	100,100
170	1.339	1.269	1.139	1.117	1.099	1.011	1.133	1.154	160-170	0.3333	1015	100,100
180	1.273	1.368	1.286	1.334	1.279	1.364	1.288	1.332	170-180	0.1137	1015	100,100
DEG	LUMINOUS INTENSITY:cd								UNIT:lm			

C Range: 0 - 360DEG
 C Interval: 15.0DEG
 Test Speed: MEDIUM
 Temperature:25.3DEG
 Operators:
 Test Date:2020-12-30

g Range: 0 - 180DEG
 g Interval: 0.5DEG
 Test System:EVERFINE GO-SPEX500_V1 SYSTEM V2.0.402
 Humidity:65.0%
 Test Distance:3.010m [K=1.0000]
 Remarks:

UGR(Unified Glare Rating) Table

Test:U:120.08V I:0.1140A P:13.057W PF:0.9542 Freq:59.98Hz Lamp Flux:1015.35x1 lm										
NAME: LCFB					TYPE:			WEIGHT:		
SPEC.:12W					DIM.:			SERIAL No.:		
MFR.:					SUR.:			Shielding Angle:		
ceiling/cavity	0.7	0.7	0.5	0.5	0.3	0.7	0.7	0.5	0.5	0.3
walls	0.5	0.3	0.5	0.3	0.3	0.5	0.3	0.5	0.3	0.3
working plane	0.2	0.2	0.2	0.2	0.2	0.2	0.2	0.2	0.2	0.2
Room dimensions	Viewed crosswise					Viewed endwise				
x = 2H y = 2H	11.7	13.2	12.0	13.4	13.6	11.5	13.0	11.8	13.2	13.4
3H	13.3	14.6	13.6	14.9	15.1	13.0	14.4	13.3	14.6	14.9
4H	13.9	15.2	14.3	15.5	15.8	13.6	14.9	13.9	15.2	15.5
6H	14.5	15.7	14.8	16.0	16.3	14.1	15.3	14.4	15.6	15.9
8H	14.7	15.8	15.0	16.1	16.4	14.3	15.4	14.6	15.7	16.0
12H	14.8	15.9	15.2	16.2	16.6	14.4	15.5	14.7	15.8	16.1
4H 2H	12.3	13.6	12.7	13.9	14.2	12.2	13.5	12.5	13.7	14.0
3H	14.1	15.2	14.5	15.5	15.8	13.9	15.0	14.2	15.3	15.6
4H	14.9	15.9	15.3	16.3	16.6	14.6	15.7	15.0	16.0	16.3
6H	15.6	16.5	16.0	16.9	17.2	15.2	16.2	15.7	16.5	16.9
8H	15.8	16.7	16.3	17.1	17.5	15.5	16.3	15.9	16.7	17.1
12H	16.1	16.8	16.5	17.2	17.7	15.6	16.4	16.1	16.8	17.2
8H 4H	15.2	16.1	15.6	16.4	16.8	15.0	15.8	15.4	16.2	16.6
6H	16.1	16.8	16.5	17.2	17.6	15.8	16.5	16.2	16.9	17.3
8H	16.4	17.1	16.9	17.5	18.0	16.1	16.7	16.6	17.2	17.6
12H	16.8	17.3	17.3	17.8	18.3	16.4	16.9	16.9	17.4	17.9
12H 4H	15.2	16.0	15.7	16.4	16.8	15.0	15.8	15.4	16.2	16.6
6H	16.2	16.8	16.6	17.2	17.7	15.9	16.5	16.3	16.9	17.4
8H	16.6	17.1	17.1	17.6	18.1	16.3	16.8	16.7	17.3	17.7
Variations with the observer position at spacings:										
S = 1.0H	+ 0.2 / - 0.2					+ 0.2 / - 0.2				
1.5H	+ 0.2 / - 0.3					+ 0.2 / - 0.3				
2.0H	+ 0.1 / - 0.3					+ 0.2 / - 0.3				

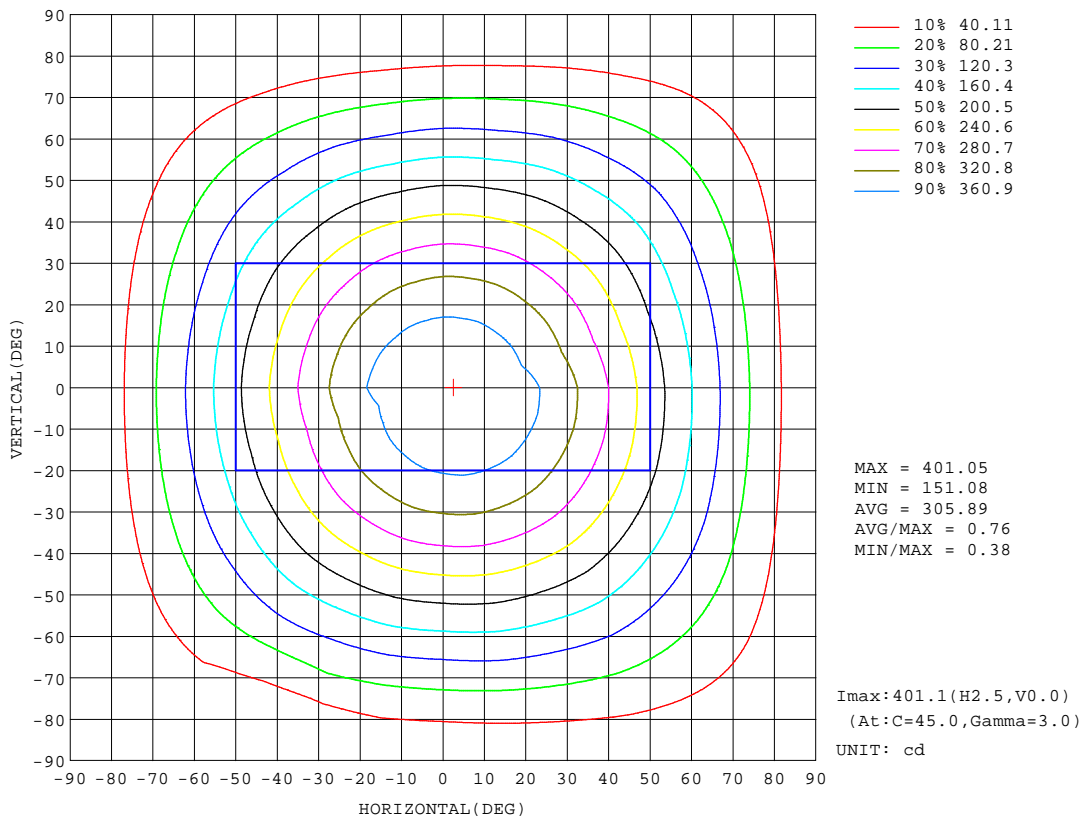
CIE Pub.117, 1015 lm Total Lamp Luminous Flux Corrected (8log(F/F0) = 0.1)

C Range: 0 - 360DEG
 C Interval: 15.0DEG
 Test Speed: MEDIUM
 Temperature:25.3DEG
 Operators:
 Test Date:2020-12-30

g Range: 0 - 180DEG
 g Interval: 0.5DEG
 Test System:EVERFINE GO-SPEX500_V1 SYSTEM V2.0.402
 Humidity:65.0%
 Test Distance:3.010m [K=1.0000]
 Remarks:

ISOCANDELA DIAGRAM

Test:U:120.08V I:0.1140A P:13.057W PF:0.9542 Freq:59.98Hz Lamp Flux:1015.35x1 lm		
NAME: LCFB	TYPE:	WEIGHT:
SPEC.:12W	DIM.:	SERIAL No.:
MFR.:	SUR.:	Shielding Angle:



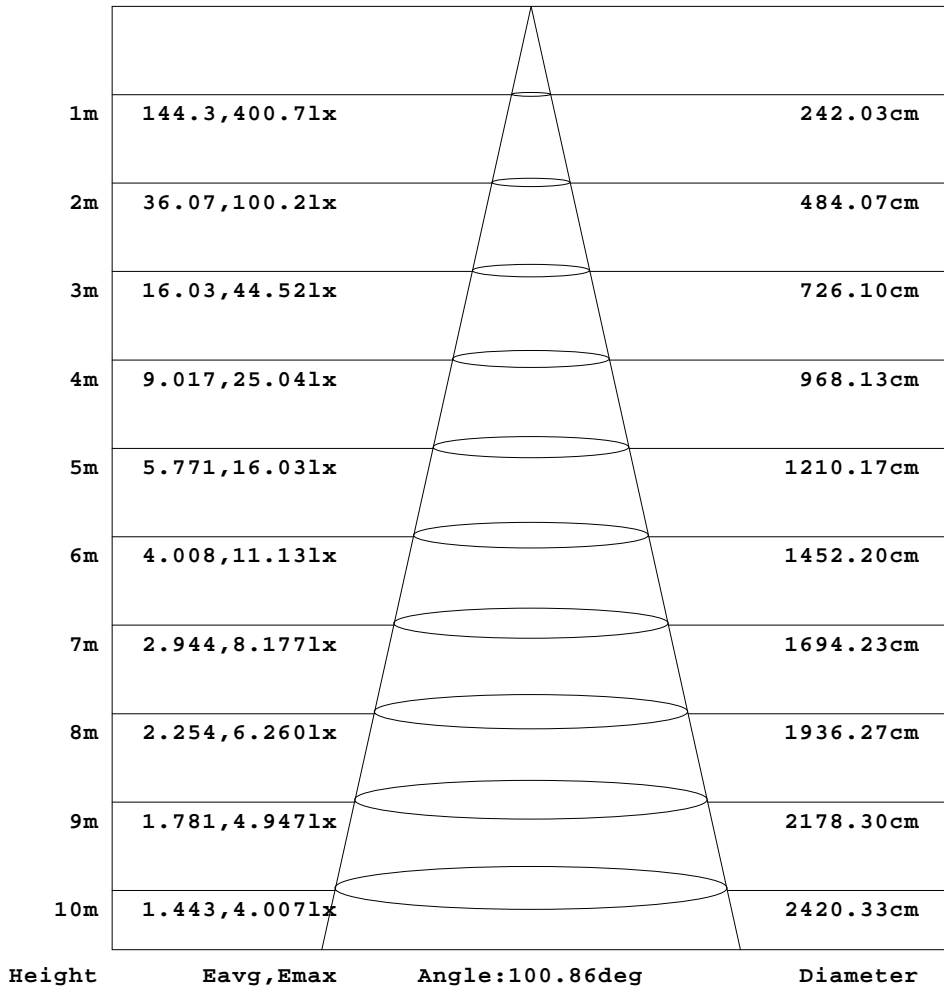
C Range: 0 - 360DEG
 C Interval: 15.0DEG
 Test Speed: MEDIUM
 Temperature:25.3DEG
 Operators:
 Test Date:2020-12-30

g Range: 0 - 180DEG
 g Interval: 0.5DEG
 Test System:EVERFINE GO-SPEX500_V1 SYSTEM V2.0.402
 Humidity:65.0%
 Test Distance:3.010m [K=1.0000]
 Remarks:

AAI Figure

Test:U:120.08V I:0.1140A P:13.057W PF:0.9542 Freq:59.98Hz Lamp Flux:1015.35x1 lm		
NAME: LCFB	TYPE:	WEIGHT:
SPEC.:12W	DIM.:	SERIAL No.:
MFR.:	SUR.:	Shielding Angle:

Flux out:667.0 lm



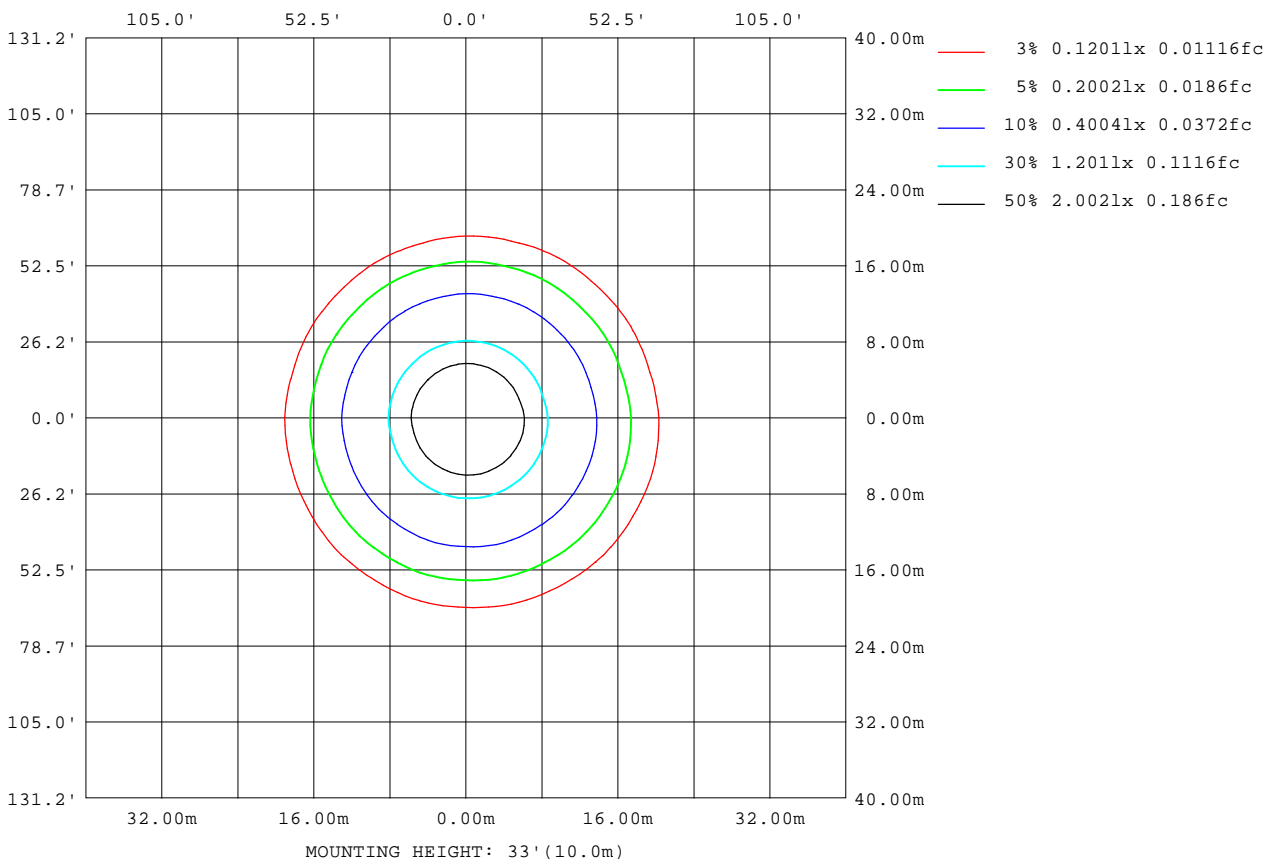
Note:The Curves indicate the illuminated area and the average illumination when the luminaire is at different distance.

C Range: 0 - 360DEG
 C Interval: 15.0DEG
 Test Speed: MEDIUM
 Temperature:25.3DEG
 Operators:
 Test Date:2020-12-30

g Range: 0 - 180DEG
 g Interval: 0.5DEG
 Test System:EVERFINE GO-SPEX500_V1 SYSTEM V2.0.402
 Humidity:65.0%
 Test Distance:3.010m [K=1.0000]
 Remarks:

ISOLUX DIAGRAM

Test:U:120.08V I:0.1140A P:13.057W PF:0.9542 Freq:59.98Hz Lamp Flux:1015.35x1 lm		
NAME: LCFB	TYPE:	WEIGHT:
SPEC.:12W	DIM.:	SERIAL No.:
MFR.:	SUR.:	Shielding Angle:



C Range: 0 - 360DEG
 C Interval: 15.0DEG
 Test Speed: MEDIUM
 Temperature:25.3DEG
 Operators:
 Test Date:2020-12-30

g Range: 0 - 180DEG
 g Interval: 0.5DEG
 Test System:EVERFINE GO-SPEX500_V1 SYSTEM V2.0.402
 Humidity:65.0%
 Test Distance:3.010m [K=1.0000]
 Remarks:

LED Avg.L Report

Test:U:120.08V I:0.1140A P:13.057W PF:0.9542 Freq:59.98Hz Lamp Flux:1015.35x1 lm		
NAME: LCFB	TYPE:	WEIGHT:
SPEC.:12W	DIM.:	SERIAL No.:
MFR.:	SUR.:	Shielding Angle:

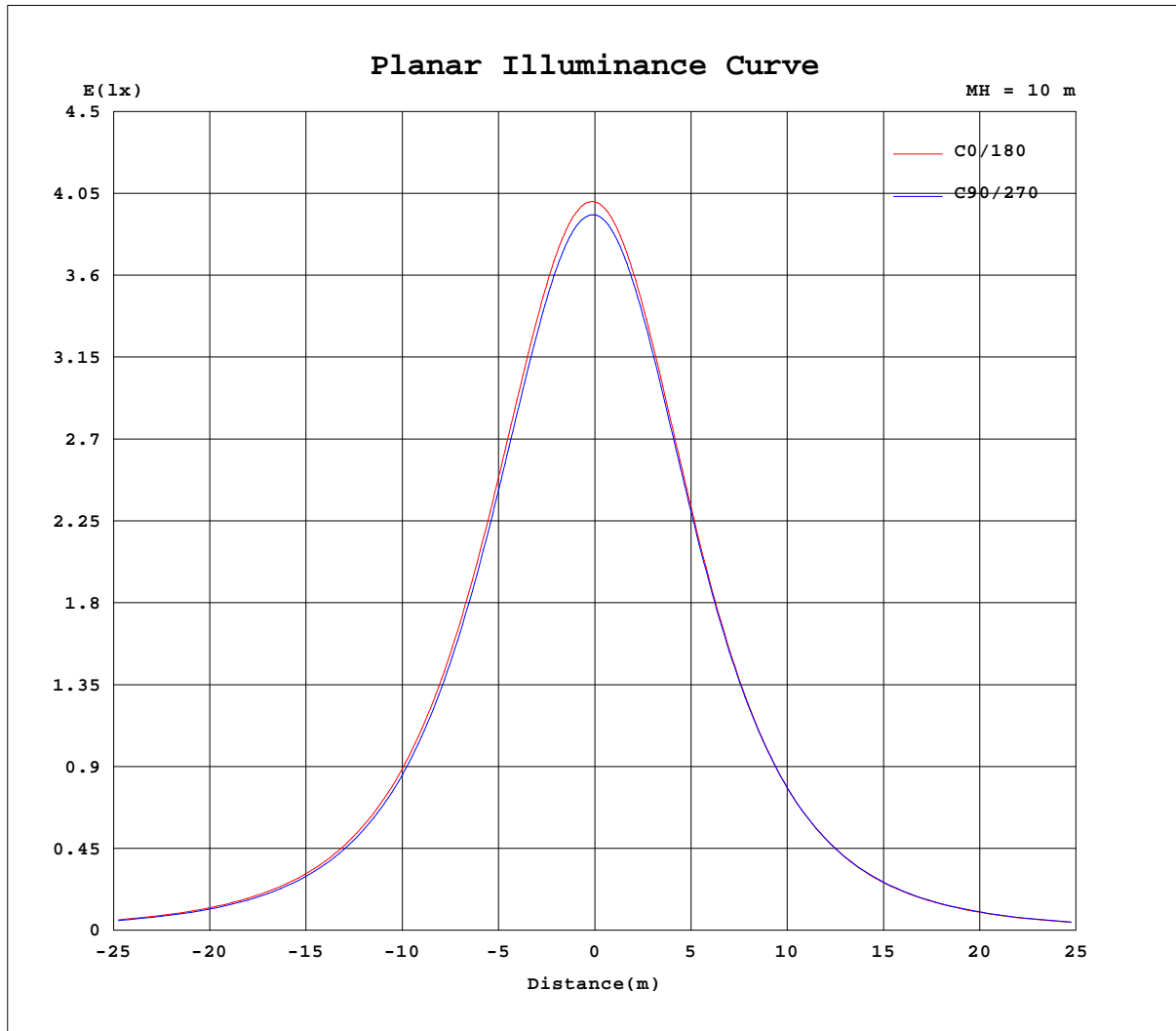
AvgL	cd/m2
L_0~180(65)av	548
L_0~180(75)av	473
L_0~180(85)av	343
L_90~270(65)av	546
L_90~270(75)av	471
L_90~270(85)av	327
L_45(65)av	547
L_45(75)av	461
L_45(85)av	272

Standard: GB/T 29293-2012

C Range: 0 - 360DEG
 C Interval: 15.0DEG
 Test Speed: MEDIUM
 Temperature:25.3DEG
 Operators:
 Test Date:2020-12-30

g Range: 0 - 180DEG
 g Interval: 0.5DEG
 Test System:EVERFINE GO-SPEX500_V1 SYSTEM V2.0.402
 Humidity:65.0%
 Test Distance:3.010m [K=1.0000]
 Remarks:

Planar Illuminance Curve



C Range: 0 - 360DEG
 C Interval: 15.0DEG
 Test Speed: MEDIUM
 Temperature: 25.3DEG
 Operators:
 Test Date: 2020-12-30

g Range: 0 - 180DEG
 g Interval: 0.5DEG
 Test System: EVERFINE GO-SPEX500_V1 SYSTEM V2.0.402
 Humidity: 65.0%
 Test Distance: 3.010m [K=1.0000]
 Remarks:

LUMINOUS DISTRIBUTION INTENSITY DATA

Test:U:120.08V I:0.1140A P:13.057W PF:0.9542 Freq:59.98Hz Lamp Flux:1015.35x1 lm		
NAME: LCFB	TYPE:	WEIGHT:
SPEC.:12W	DIM.:	SERIAL No.:
MFR.: LiBo	SUR.:	Shielding Angle:

Table--1

UNIT: cd

C(DEG) g (DEG)	0	15	30	45	60	75	90	105	120	135	150	165	180	195	210	225	240	255	270
0	394	394	394	394	394	394	394	394	394	394	394	394	394	394	394	394	394	394	394
5	394	395	395	395	395	394	394	393	392	392	391	390	390	389	389	389	389	390	390
10	390	391	391	391	390	390	389	387	386	384	383	382	381	379	379	379	380	380	382
15	381	382	382	382	382	380	379	377	374	373	370	369	367	365	365	365	366	366	368
20	367	369	369	369	368	367	364	362	359	357	353	352	349	347	347	346	347	348	351
25	349	352	352	352	350	349	346	343	339	337	333	331	328	325	325	324	326	327	330
30	328	331	331	331	329	327	323	321	316	313	309	306	303	300	300	299	301	302	306
35	303	306	306	307	304	303	299	296	291	287	283	280	276	273	273	272	274	276	279
40	276	280	280	280	278	276	271	268	263	260	255	252	248	245	244	244	246	247	251
45	248	251	252	252	249	247	243	240	234	231	226	223	219	215	215	215	217	218	222
50	218	222	222	223	220	218	213	210	205	202	196	194	190	186	186	185	188	189	194
55	189	193	192	194	190	189	183	181	175	172	166	164	160	156	157	156	159	159	164
60	159	163	163	164	160	159	153	151	145	143	137	135	131	127	128	126	130	130	135
65	129	134	133	134	131	130	124	122	116	114	108	106	102	98.3	99.3	98.0	101	102	106
70	101	105	104	105	102	101	95.7	93.4	88.1	78.7	80.7	77.9	74.6	72.0	71.9	71.8	73.8	75.4	78.9
75	73.7	76.7	77.0	77.4	74.8	72.8	69.0	66.4	57.9	52.6	54.1	51.6	48.7	46.4	46.5	46.3	48.2	49.6	52.8
80	47.7	50.3	50.5	50.8	48.6	46.7	43.1	40.6	30.6	0.93	22.2	27.9	25.6	23.8	23.8	23.6	25.1	26.3	29.1
85	24.1	26.5	26.5	26.7	24.7	23.2	20.0	17.7	10.3	0.56	0.70	7.56	5.85	4.78	4.56	4.54	5.37	6.58	8.53
90	4.53	5.90	6.11	5.93	4.72	3.37	1.26	0.62	0.44	0.56	0.41	0.42	0.34	0.35	0.36	0.36	0.36	0.39	0.38
95	0.52	0.50	0.49	0.47	0.45	0.43	0.45	0.44	0.50	0.56	0.51	0.51	0.43	0.44	0.46	0.47	0.47	0.48	0.49
100	0.56	0.57	0.58	0.56	0.54	0.53	0.54	0.54	0.57	0.60	0.59	0.59	0.58	0.59	0.60	0.61	0.60	0.58	0.62
105	0.75	0.64	0.69	0.67	0.65	0.64	0.65	0.65	0.67	0.74	0.71	0.74	0.74	0.74	0.75	0.76	0.75	0.73	0.72
110	0.90	0.79	0.83	0.81	0.79	0.79	0.79	0.78	0.81	0.88	0.83	0.89	0.89	0.89	0.88	0.89	0.89	0.88	0.87
115	1.07	0.97	0.96	0.96	0.94	0.93	0.94	0.92	0.92	0.93	0.97	1.02	1.03	1.02	1.02	1.02	1.00	0.99	0.98
120	1.23	1.15	1.10	1.08	1.07	1.07	1.08	1.05	1.04	1.05	1.09	1.16	1.16	1.14	1.15	1.13	1.12	1.12	1.12
125	1.39	1.29	1.23	1.20	1.17	1.19	1.19	1.17	1.15	1.16	1.19	1.26	1.26	1.22	1.22	1.23	1.20	1.20	1.21
130	1.44	1.37	1.34	1.30	1.28	1.29	1.29	1.27	1.24	1.26	1.28	1.32	1.30	1.29	1.28	1.31	1.31	1.33	1.34
135	1.51	1.45	1.42	1.40	1.37	1.40	1.40	1.35	1.32	1.34	1.34	1.36	1.33	1.30	1.30	1.35	1.35	1.37	1.40
140	1.54	1.47	1.47	1.47	1.46	1.47	1.47	1.42	1.41	1.40	1.36	1.36	1.33	1.29	1.29	1.34	1.40	1.47	1.49
145	1.56	1.47	1.46	1.49	1.52	1.56	1.53	1.49	1.46	1.41	1.36	1.34	1.32	1.26	1.24	1.31	1.35	1.41	1.49
150	1.52	1.44	1.44	1.47	1.54	1.59	1.56	1.51	1.47	1.35	1.31	1.30	1.25	1.17	1.19	1.23	1.33	1.40	1.46
155	1.45	1.44	1.43	1.41	1.48	1.55	1.53	1.46	1.39	1.25	1.27	1.26	1.19	1.10	1.12	1.10	1.23	1.37	1.38
160	1.40	1.40	1.32	1.30	1.40	1.42	1.35	1.32	1.26	1.13	1.13	1.19	1.07	1.05	1.02	1.00	1.09	1.20	1.24
165	1.32	1.34	1.29	1.26	1.28	1.30	1.26	1.22	1.15	1.08	1.10	1.11	1.02	1.00	0.95	0.99	1.07	1.16	1.18
170	1.34	1.37	1.35	1.27	1.21	1.18	1.14	1.13	1.12	1.12	1.15	1.15	1.10	1.07	1.02	1.01	1.05	1.10	1.13
175	1.29	1.32	1.36	1.31	1.25	1.22	1.19	1.19	1.22	1.20	1.17	1.15	1.12	1.11	1.10	1.14	1.18	1.15	1.14
180	1.27	1.27	1.31	1.37	1.31	1.29	1.29	1.27	1.28	1.33	1.29	1.26	1.28	1.28	1.32	1.36	1.31	1.28	1.29

C Range: 0 - 360DEG
 C Interval: 15.0DEG
 Test Speed: MEDIUM
 Temperature:25.3DEG
 Operators:
 Test Date:2020-12-30

g Range: 0 - 180DEG
 g Interval: 0.5DEG
 Test System:EVERFINE GO-SPEX500_V1 SYSTEM V2.0.402
 Humidity:65.0%
 Test Distance:3.010m [K=1.0000]
 Remarks:

