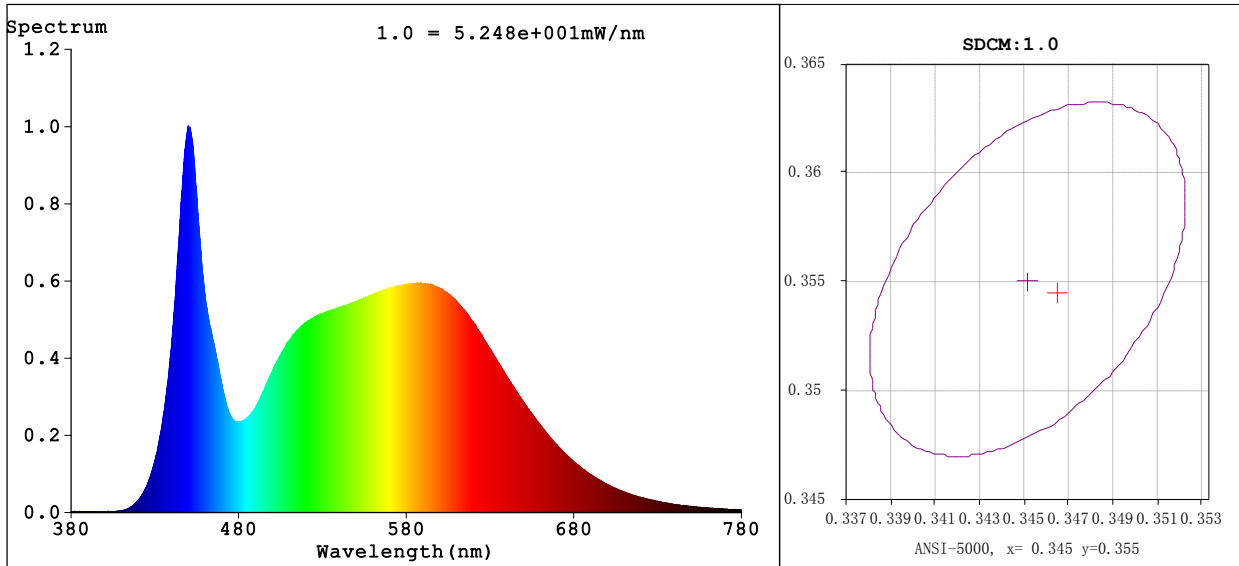


Spectrum Test Report



Colorimetric Parameters

Chromaticity Coordinate: $x=0.3461$ $y=0.3546$ $u'=0.2109$ $v'=0.4863$ $Dx, Dy: 0.0002, 0.0024$
 CCT=4974K (Duv=0.0011) Dominant WL:Ld =572.0nm Purity=10.2%
 Peak WL:Lp=450.0nm FWHM=21.0nm
 Render Index:Ra=84.2 Render Index:AvgR =77.4
 R1 =83 R2 =89 R3 =93 R4 =84 R5 =83 R6 =84 R7 =88
 R8 =70 R9 =14 R10=73 R11=83 R12=59 R13=85 R14=96 R15=78

Photometric & Radiometric Parameters

Flux=1978 lm Eff.:77.91 lm/W Fe=6.186 W

Electrical parameters

V=120.0 V I=0.2602 A P=25.39 W PF=0.8133 F=59.98 Hz
 频率=59.98 Hz

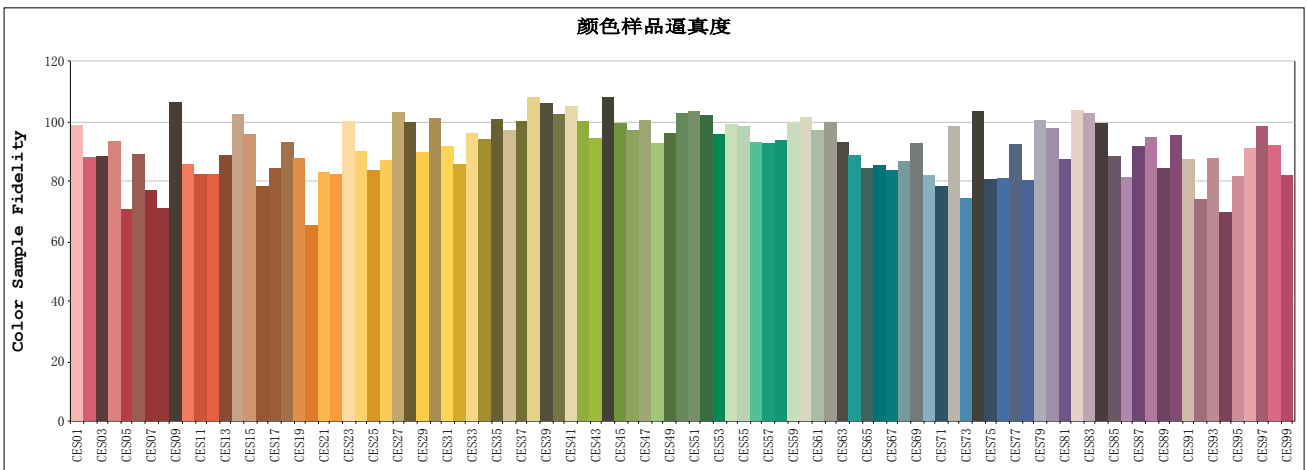
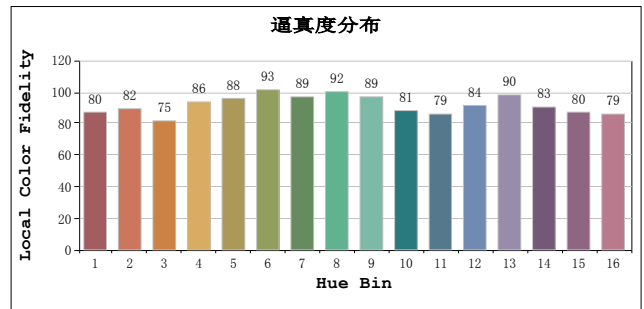
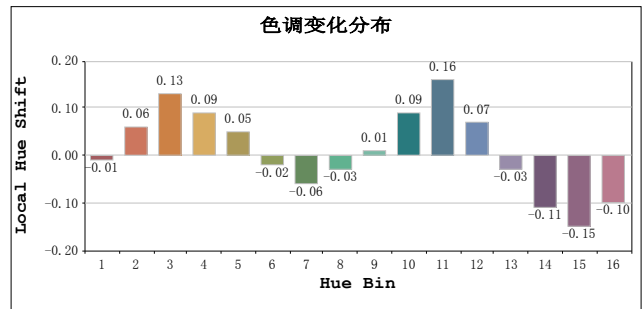
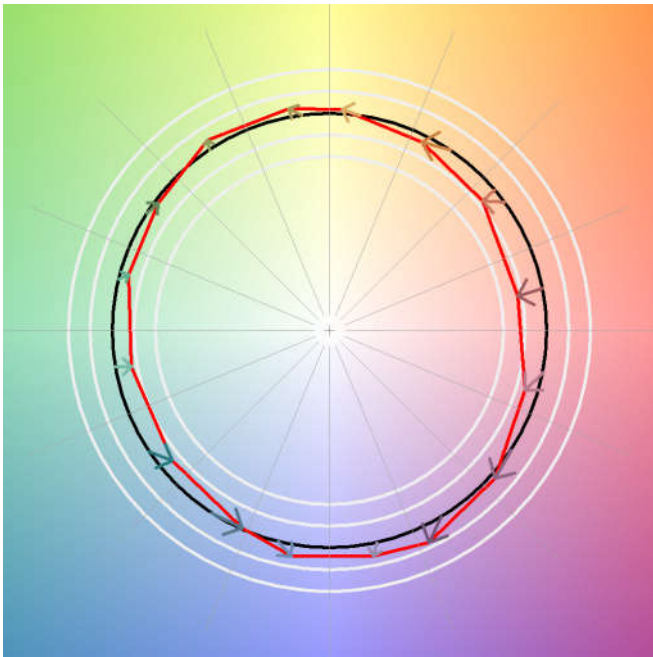
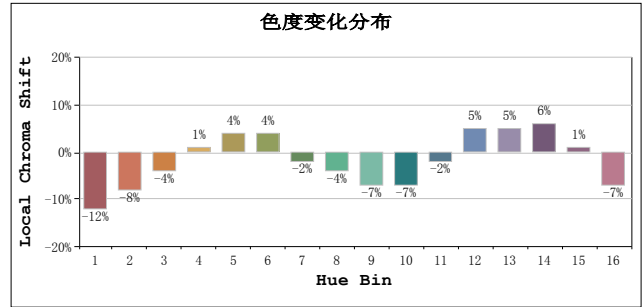
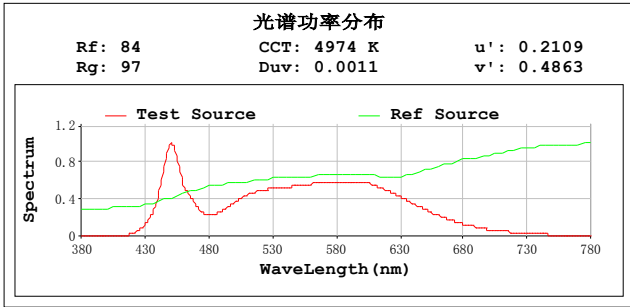
Status: Integral T = 322 ms Ip = 55199 (84%)

Test Mode: Fast Test; Sensitivity = High; Tecool: ON

Model:
 Test By:DAMIN
 Temperature:25.3Deg
 Manufacturer:EVERFINE
 Assessor:damin

Number:2
 Date:2020-07-09 17:03:49
 Humidity:65.0%
 Remarks:

TM30



All Rf:

Rf1 = 90.5	Rf2 = 80.6	Rf3 = 81.2
Rf4 = 85.7	Rf5 = 65.0	Rf6 = 81.6
Rf7 = 70.7	Rf8 = 65.2	Rf9 = 97.6
Rf10 = 78.5	Rf11 = 75.6	Rf12 = 75.5
Rf13 = 81.4	Rf14 = 93.8	Rf15 = 87.9
Rf16 = 71.8	Rf17 = 77.5	Rf18 = 85.4
Rf19 = 80.4	Rf20 = 60.1	Rf21 = 76.2
Rf22 = 75.6	Rf23 = 91.7	Rf24 = 82.6
Rf25 = 76.9	Rf26 = 80.0	Rf27 = 94.5
Rf28 = 91.3	Rf29 = 82.4	Rf30 = 92.8
Rf31 = 84.3	Rf32 = 78.5	Rf33 = 88.1
Rf34 = 86.2	Rf35 = 92.5	Rf36 = 89.0
Rf37 = 91.8	Rf38 = 99.1	Rf39 = 97.3
Rf40 = 93.9	Rf41 = 96.4	Rf42 = 91.7
Rf43 = 86.5	Rf44 = 99.2	Rf45 = 91.3
Rf46 = 88.9	Rf47 = 92.1	Rf48 = 85.1
Rf49 = 88.0	Rf50 = 94.0	Rf51 = 94.8
Rf52 = 93.5	Rf53 = 87.8	Rf54 = 90.9
Rf55 = 90.3	Rf56 = 85.4	Rf57 = 85.2
Rf58 = 86.0	Rf59 = 91.5	Rf60 = 92.9
Rf61 = 89.0	Rf62 = 91.4	Rf63 = 85.5
Rf64 = 81.4	Rf65 = 77.5	Rf66 = 78.4
Rf67 = 76.6	Rf68 = 79.7	Rf69 = 85.1
Rf70 = 75.1	Rf71 = 72.0	Rf72 = 90.4
Rf73 = 68.2	Rf74 = 94.9	Rf75 = 73.9
Rf76 = 74.3	Rf77 = 84.8	Rf78 = 73.6
Rf79 = 92.2	Rf80 = 89.6	Rf81 = 80.2
Rf82 = 95.3	Rf83 = 94.4	Rf84 = 91.3
Rf85 = 81.1	Rf86 = 74.8	Rf87 = 84.1
Rf88 = 87.0	Rf89 = 77.6	Rf90 = 87.6
Rf91 = 80.1	Rf92 = 67.8	Rf93 = 80.4
Rf94 = 63.9	Rf95 = 75.0	Rf96 = 83.5
Rf97 = 90.2	Rf98 = 84.5	Rf99 = 75.2